

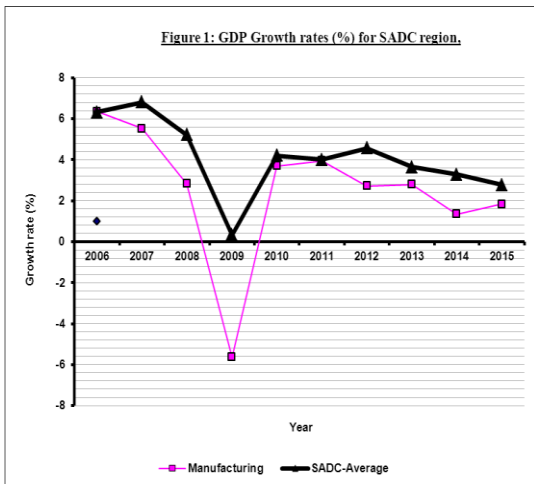
SADC SELECTED ECONOMIC AND SOCIAL INDICATORS, 2015

1. Introduction

This report presents a snapshot of the socio-economic characteristics of SADC region for the Year 2015 based on Selected Economic and Social Indicators for the period 2006 to 2015. Data is primarily obtained from National Statistical Offices (NSOs) of SADC Member States and endorsed during the annual statutory meeting of SADC Statistics Committee (SSC), June 2016, Botswana. The core list of indicators depicting the region is presented in tables 1 to 20 and corresponds to data submission as at June 2016. The following sections present an analysis of trend of Gross Domestic Product (GDP), Trade and demographic statistics.

2. GDP

SADC region registered growth rate of 2.8% in 2015 compared to 3.3% in 2014 as illustrated in Figure 1. The Manufacturing sector, as identified as the key engine of growth in SADC for the coming decades, grew by 1.8% in 2015 compared to 1.3% in 2014. Post 2010, both overall GDP growth and manufacturing sector growth have been increasing on a decreasing trend up to 2015.



At country-specific level (Table 3), SADC economies that have registered growth rates above 7.0% are: DRC (7.7%) and Tanzania (7.0%) whilst Botswana registered negative growth of 0.3%. On the other hand, Zimbabwe, Seychelles, DRC and Mozambique registered significant growth in the manufacturing industry whereas Namibian and Angolan manufacturing sector declined by 7.1% and 2.2% respectively.

The share of manufacturing sector to overall GDP in 2015 worked out to 10.6%. However, since 2006, the SADC region has experienced constant decline of manufacturing share to GDP on an annual basis as illustrated in Figure 2 below. Manufacturing Sector represented 14.1% of SADC GDP in 2005, has gradually and constantly declined to reach 10.6% in 2015.

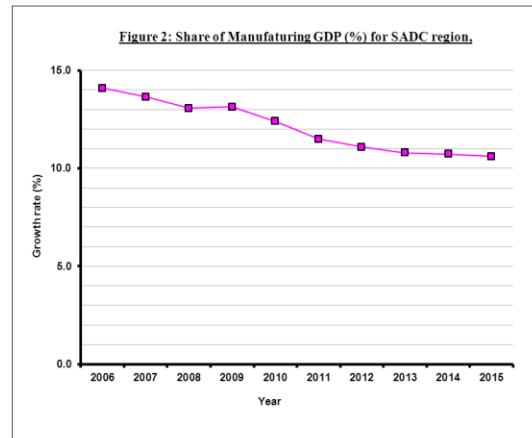
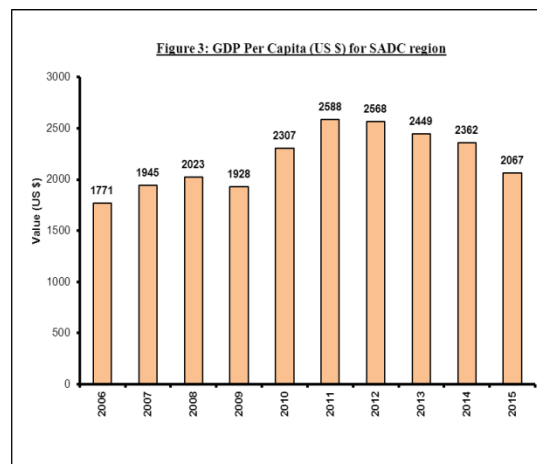
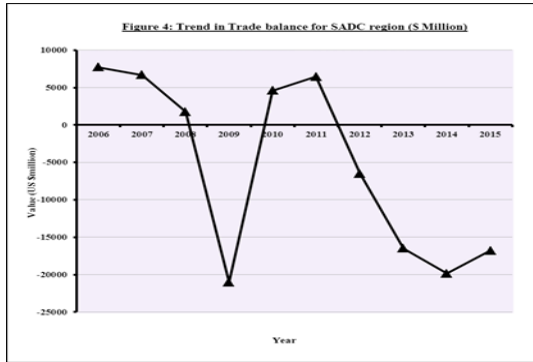


Figure 3 shows trend of nominal GDP per capita of SADC region for the period 2006-2015. GDP per capita stood at \$2067 in 2015 representing a significant decrease of 12.5% compared to \$2362 in 2014. Since 2006, this variable, as an important indicator of poverty, increased from \$1771 to \$2588, its highest level, in 2011. Post 2011, it has gradually decreased due to sharp depreciation of currencies of most SADC Member States. Table 4 shows the specific country GDP per capita where Seychelles has the highest whilst Malawi has the lowest per capita.

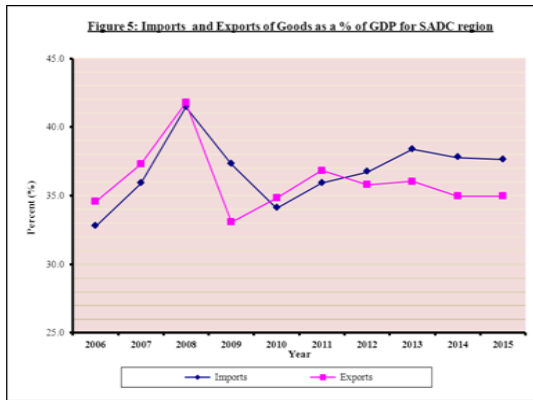


3. TRADE

Trade liberalization is one of the key determinants of economic integration within the SADC region. As of 2015, SADC Exports of Goods and Services stood at \$ 220 billion whilst Imports stood at \$ 237 billion thereby leading to a trade deficit of \$ 17 billion. Figure 4 illustrates trend in SADC Trade Balance for the period 2005-2014.



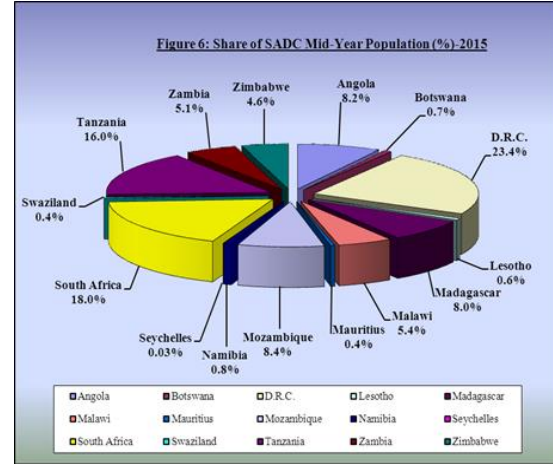
After 2 consecutive years of positive trade balance in 2010 and 2011, SADC region external position deteriorated post 2011 to reach a negative balance of \$ 17 billion in 2015 mainly due to reduced trade surplus Angola and negative trade balances for the majority of SADC Member States (Table 8). The largest exporter and importer of the region remains South Africa followed by Angola and DRC (Table 6-7). Trade also represents a significant share as a % of total economy as illustrated in Figure 5 below.



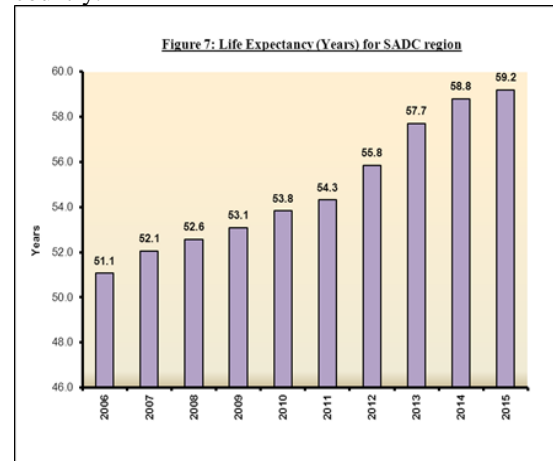
Since 2006, the share of Imports of goods and services as a percentage of GDP has been gradually increasing whilst that of Exports has been slightly decreasing since 2011.

4. DEMOGRAPHY

SADC Population for 2015 increased to 304.8 million compared to 298.6 million in 2014. The largest population for 2015 is in DRC (23.4%) followed by South Africa (18.0%) and Tanzania (16.0%). Figure 6 shows the share of population across SADC Member States for 2015.



Life Expectancy at birth, as a measurement for quantity of life, is a very useful indicator regarding health of a population that is a predicament of growth and productivity in a country.



SADC region has been registering steady increase in life expectancy (Figure 7) over the past decade that could be attributed to improved nutrition, sanitation and improved medical interventions. The region life expectancy has increased from 51.1 years in 2006 to reach 59.2 years in 2015.

Table 1: Mid-Year Population in SADC (000s), 2006 – 2015

SADC Member States	2006	2007	2008	2009	2010	2011	2012	2013	2014	2015
Angola	15 410	15 889	16 368	16 889	17 429	17 992	18 576	19 183	25 789	25 022
Botswana	1 845	1 880	1 915	1 951	1 988	2 025	2 063	2 101	2 156	2 195
DRC	55 590	57 190	58 820	60 490	62 190	63 960	65 710	67 510	69 375	71 386
Lesotho	1 875	1 880	1 884	1 887	1 892	1 893	1 901	1 908	1 916	1 924
Madagascar	18 048	18 556	19 072	19 601	20 142	20 696	21 263	23 827	23 572	24 235
Malawi	12 758	13 187	13 077	13 520	13 948	14 589	14 845	15 517	15 805	16 312
Mauritius	1 234	1 240	1 244	1 247	1 250	1 252	1 256	1 259	1 261	1 263
Mozambique	20 102	20 632	21 208	21 803	22 417	23 050	23 701	24 366	25 042	25 728
Namibia	1 991	2 028	2 065	2 103	2 143	2 184	2 226	2 268	2 311	2 355
Seychelles	84.0	85.0	86.0	87.3	89.0	87.4	88.3	89.9	92.1	93.4
South Africa	47 991	48 656	49 344	50 055	50 791	51 553	52 341	53 157	54 002	54 957
Swaziland	1 015	1 018	1 032	1 044	1 055	1 067	1 080	1 093	1 106	1 119
Tanzania	38 251	39 446	40 668	41 916	43 188	44 485	44 929	46 170	47 452	48 776
Zambia	11 642	11 970	12 292	12 626	13 093	13 719	14 145	14 580	15 023	15 474
Zimbabwe	12 010	12 040	12 122	12 231	12 336	12 754	13 062	13 370	13 659	13 956
SADC Total	239 846	245 697	251 197	257 450	263 950	271 306	277 186	286 399	298 561	304 795

Table 2: GDP in SADC at Current Market Price (Million Us \$), 2006 – 2015

SADC Member States	2006	2007	2008	2009	2010	2011	2012	2013	2014	2015
Angola	52 381	65 266	88 539	70 415	83 799	111 943	128 138	136 725	145 668	119 892
Botswana	10 138	10 938	10 945	10 267	12 787	15 771	14 686	14 801	15 872	14 287
DRC	14 303	16 366	19 144	16 004	21 564	25 842	29 310	32 687	35 910	37 587
Lesotho	1 423	1 596	1 867	1 904	2 413	2 799	2 681	2 511	2 546	1 998
Madagascar	5 508	7 343	9 413	8 544	8 730	9 893	9 920	10 605	10 674	9 734
Malawi	3 998	4 432	5 321	6 191	6 960	8 003	5 721	5 150	5 949	6 304
Mauritius	6 731	7 788	9 635	8 840	9 716	11 261	11 446	11 913	12 614	11 510
Mozambique	8 452	9 469	11 557	11 242	10 456	13 135	15 343	16 123	17 327	15 466
Namibia	7 689	8 553	8 346	8 954	10 911	12 429	13 016	12 727	12 853	12 006
Seychelles	1 017	1 033	969	849	970	1 019	1 060	1 316	1 349	1 364
South Africa	271 811	299 034	287 100	297 217	375 298	417 056	397 871	366 252	350 283	313 016
Swaziland	3 167	3 360	3 225	3 607	4 524	4 960	4 874	4 637	4 498	4 101
Tanzania	18 610	21 715	27 389	28 574	31 105	33 678	39 080	44 401	48 224	45 766
Zambia	12 618	14 120	18 338	15 611	20 291	23 460	26 250	28 076	27 147	21 321
Zimbabwe	7 012	6 962	6 451	8 157	9 457	10 956	12 472	13 490	14 197	15 606
SADC Total	424 857	477 975	508 240	496 377	608 981	702 205	711 868	701 414	705 111	629 959

Table 3: Annual Real GDP (at Market Price) Growth Rate in SADC (%), 2006 – 2015

SADC Member States	2006	2007	2008	2009	2010	2011	2012	2013	2014	2015
Angola	11.5	14.0	11.2	0.5	4.7	3.5	8.5	5.0	4.1	3.0
Botswana	8.4	8.3	6.2	-7.7	8.6	6.0	4.5	9.9	3.2	-0.3
DRC	5.3	6.3	6.2	2.9	7.1	6.9	13.4	2.4	7.2	7.7
Lesotho	4.3	4.7	6.7	2.7	6.2	6.9	5.2	2.3	4.7	2.5
Madagascar	5.0	6.2	7.1	-4.0	0.2	1.4	3.0	2.4	2.0	3.0
Malawi	2.1	7.6	7.1	2.4	6.2	4.3	1.9	5.4	6.0	2.9
Mauritius	4.2	5.9	5.5	3.0	4.1	3.8	3.2	3.2	3.6	3.5
Mozambique	9.9	7.4	6.9	6.4	6.7	7.1	7.2	7.1	7.4	6.6
Namibia	7.4	4.9	2.6	0.3	6.0	5.1	5.1	5.7	6.3	5.7
Seychelles	9.4	10.1	-1.9	-0.2	5.9	5.4	3.7	5.0	6.2	6.8
South Africa	5.6	5.4	3.2	-1.5	3.0	3.2	2.2	2.2	1.5	1.3
Swaziland	5.1	4.1	4.4	2.6	1.8	1.9	3.4	4.6	2.7	2.7
Tanzania	4.7	8.5	5.6	5.4	6.4	7.9	5.1	7.3	7.0	7.0
Zambia	7.9	8.4	7.8	9.2	10.3	5.6	7.6	5.1	5.0	3.2
Zimbabwe	-3.6	-3.3	-2.8	27.7	11.4	11.9	10.6	4.5	3.8	1.6
SADC Average	6.3	6.8	5.2	0.3	4.2	4.0	4.6	3.6	3.3	2.8

Table 4: Per Capita GDP in SADC (US \$ per head), 2005 – 2015

SADC Member States	2006	2007	2008	2009	2010	2011	2012	2013	2014	2015
Angola	3 399	4 108	5 409	4 169	4 808	6 222	6 898	7 127	5 648	4 791
Botswana	5 495	5 819	5 716	5 263	6 433	7 788	7 119	7 045	7 362	6 509
DRC	257	286	325	265	347	404	446	484	518	527
Lesotho	759	849	991	1 009	1 276	1 479	1 410	1 316	1 329	1 039
Madagascar	305	396	494	436	433	478	467	445	453	402
Malawi	313	336	407	458	499	549	385	332	376	386
Mauritius	5 455	6 281	7 745	7 089	7 773	8 995	9 113	9 462	10 003	9 113
Mozambique	420	459	545	516	466	570	647	662	692	601
Namibia	3 862	4 218	4 042	4 258	5 092	5 691	5 847	5 612	5 562	5 098
Seychelles	12 102	12 147	11 272	9 728	10 896	11 648	12 002	14 627	14 642	14 600
South Africa	5 664	6 146	5 818	5 938	7 389	8 090	7 602	6 890	6 486	5 696
Swaziland	3 120	3 301	3 125	3 455	4 288	4 649	4 513	4 243	4 067	3 665
Tanzania	487	551	673	682	720	757	870	962	1 016	938
Zambia	1 084	1 180	1 492	1 236	1 550	1 710	1 856	1 926	1 807	1 378
Zimbabwe	584	578	532	667	767	859	955	1 009	1 039	1 118
SADC Average	1 771	1 945	2 023	1 928	2 307	2 588	2 568	2 449	2 362	2 067

Table 5: Share of Manufacturing GDP to Total GDP in SADC (%), 2006 – 2015

SADC Member States	2006	2007	2008	2009	2010	2011	2012	2013	2014	2015
Angola	3.6	3.4	3.5	5.0	4.6	4.2	4.4	4.7	5.1	4.0
Botswana	5.8	7.0	6.4	7.2	7.1	6.3	6.5	6.5	6.0	6.3
DRC	19.8	20.7	23.4	26.8	17.1	16.3	16.5	16.7	16.8	17.9
Lesotho	21.0	19.0	21.4	17.5	13.2	13.1	12.1	11.9	11.1	9.4
Madagascar	14.6	15.0	14.7	14.6	14.5	14.6	14.6	14.6	14.4	14.2
Malawi	13.8	15.5	12.6	11.2	10.7	10.9	7.8	9.1	9.1	8.6
Mauritius	18.6	18.3	18.4	17.8	17.0	16.9	16.7	17.0	16.5	16.1
Mozambique	15.9	15.4	13.4	11.9	11.3	11.2	10.0	9.5	9.9	10.0
Namibia	13.9	14.7	12.3	14.1	13.5	14.8	13.1	12.0	10.7	9.2
Seychelles	10.5	11.0	10.8	9.2	9.7	9.4	10.3	8.7	7.8	6.6
South Africa	16.4	16.1	16.0	15.0	14.4	13.3	13.1	13.2	13.3	13.0
Swaziland	34.2	34.5	34.1	35.3	35.2	36.7	36.4	35.6	35.5	35.0
Tanzania	8.0	7.5	7.5	7.4	7.4	8.1	8.0	6.9	6.1	5.7
Zambia	10.3	9.5	9.2	9.3	8.4	8.2	7.7	6.6	6.4	8.5
Zimbabwe	16.9	15.9	15.9	15.2	13.7	13.8	13.3	12.6	11.7	12.9
SADC Average	14.1	13.7	13.1	13.1	12.4	11.5	11.1	10.8	10.7	10.6

Table 6: Manufacturing GDP Real Growth rate in SADC (%), 2006 – 2015

SADC Member States	2006	2007	2008	2009	2010	2011	2012	2013	2014	2015
Angola	6.5	2.0	5.9	6.8	9.6	9.1	9.6	7.7	2.3	-2.2
Botswana	20.0	25.7	-2.6	5.0	3.9	11.4	3.7	6.5	0.4	1.7
DRC	8.2	4.9	2.5	1.8	-35.5	1.8	5.3	10.1	9.9	9.3
Lesotho	8.3	1.8	-2.6	-3.0	1.0	-0.5	-3.3	-2.6	-6.9	2.7
Madagascar	3.0	10.8	3.1	-9.3	-2.4	3.9	2.7	2.1	-6.9	3.1
Malawi	7.8	17.1	11.0	29.1	11.4	1.4	-0.9	5.6	5.0	6.1
Mauritius	4.8	2.6	3.3	2.4	1.9	0.7	2.2	4.4	2.2	0.2
Mozambique	3.0	3.1	-2.8	0.0	3.1	2.1	0.1	4.1	2.6	8.5
Namibia	2.6	8.5	4.9	2.1	7.3	5.6	-6.8	4.6	-2.1	-7.1
Seychelles	3.2	3.4	-12.8	-11.2	8.4	13.0	17.7	-13.1	-6.3	9.7
South Africa	6.4	5.4	2.3	-10.6	5.9	2.9	1.9	0.7	0.0	0.1
Swaziland	9.7	7.5	9.6	2.6	-0.8	6.3	2.4	2.9	3.9	3.9
Tanzania	8.2	11.4	11.4	4.5	8.9	6.7	4.2	6.6	6.8	6.5
Zambia	7.1	4.5	3.4	4.0	6.2	10.6	4.8	6.2	4.0	4.4
Zimbabwe	-4.6	-8.8	-2.6	23.2	1.9	13.7	5.3	-0.6	-5.0	11.3
SADC Average	6.4	5.5	2.8	-5.6	3.7	3.9	2.7	2.8	1.3	1.8

Table 7: Annual Inflation Rates (period average), %, in SADC, 2006 – 2015

SADC Member States	2006	2007	2008	2009	2010	2011	2012	2013	2014	2015
Angola	13.3	12.3	12.5	13.7	14.5	13.5	10.3	8.8	7.3	10.0
Botswana	11.6	7.1	12.6	8.2	6.9	8.5	7.5	5.9	4.4	3.1
DRC	13.1	16.7	18.0	46.1	17.2	12.6	2.7	1.1	1.3	1.3
Lesotho	6.1	8.0	10.7	7.3	3.6	5.0	6.0	5.0	5.4	3.2
Madagascar	10.8	10.3	9.2	9.0	9.2	9.5	5.7	5.8	6.1	7.4
Malawi	13.9	8.0	8.7	8.4	7.4	7.6	21.3	27.3	23.8	21.9
Mauritius	8.9	8.8	9.7	2.5	2.9	6.5	3.9	3.5	3.2	1.3
Mozambique	13.6	9.2	14.5	3.8	12.4	11.2	2.6	4.3	2.6	3.6
Namibia	5.0	6.6	9.1	9.5	4.9	5.0	6.7	5.6	5.4	3.4
Seychelles	-0.4	5.3	37.0	31.8	-2.4	2.6	7.1	4.3	1.4	4.0
South Africa	4.7	7.1	11.5	7.2	4.3	5.0	5.6	5.7	6.1	4.6
Swaziland	5.3	8.2	13.1	7.6	4.5	6.1	8.9	5.6	5.7	5.0
Tanzania	7.3	7.0	10.3	12.1	5.5	12.7	16.0	7.9	6.1	5.6
Zambia	9.1	10.7	12.4	13.5	8.2	6.4	6.6	7.0	7.8	10.0
Zimbabwe	1016.7	6723.7	231000000.0	-7.7	3.1	3.5	2.9	1.6	-0.2	-2.4

Table 8: Imports of Goods and Services in SADC (Million US \$), 2006 – 2015

SADC Member States	2006	2007	2008	2009	2010	2011	2012	2013	2014	2015
Angola	16 320	26 207	43 286	44 797	35 682	44 008	45 950	49 310	50 456	52 000
Botswana	3 455	4 440	5 587	5 327	6 555	8 274	8 855	9 155	8 766	7 077
DRC	3 622	7 642	8 826	6 766	11 818	12 839	11 970	13 507	14 421	11 222
Lesotho	1 695	1 884	1 869	1 946	2 442	2 608	2 690	2 250	2 183	2 300
Madagascar	2 525	3 823	5 357	4 411	3 758	4 188	4 361	4 562	4 536	4 334
Malawi	1 320	1 537	2 007	2 237	2 115	2 861	2 579	2 955	3 074	3 100
Mauritius	4 776	5 231	6 369	5 155	6 196	7 465	7 634	7 420	7 954	6 858
Mozambique	3 464	3 779	4 527	4 640	4 833	7 212	12 037	13 544	14 687	10 518
Namibia	3 254	4 774	5 580	6 548	6 618	7 143	7 830	7 441	8 067	8 116
Seychelles	989	962	1 042	980	1 049	1 190	1 414	1 545	1 585	1 421
South Africa	84 271	97 214	106 925	81 754	102 733	123 352	123 392	121 771	115 986	99 885
Swaziland	2 279	2 351	2 241	2 405	2 643	1 990	1 897	1 912	1 686	1 185
Tanzania	4 654	6 880	8 433	7 509	9 061	12 137	12 940	13 795	14 365	12 057
Zambia	3 589	4 676	5 684	4 495	6 212	8 385	10 388	12 385	11 200	10 037
Zimbabwe	2 987	201	2 917	6 207	5 865	8 596	7 484	7 704	7 453	7 013
SADC Total	139 199	171 602	210 649	185 177	207 580	252 248	261 420	269 256	266 421	237 124

Table 9: Exports of Goods and Services in SADC (Million US \$), 2006 – 2015

SADC Member States	2006	2007	2008	2009	2010	2011	2012	2013	2014	2015
Angola	33 245	44 320	64 168	41 328	51 572	67 916	71 681	70 146	63 790	61 000
Botswana	5 297	5 963	4 999	3 573	5 580	7 711	7 102	9 166	9 885	7 100
DRC	2 766	6 540	7 698	5 021	9 788	11 106	9 820	12 156	13 249	10 459
Lesotho	762	832	934	803	958	1 255	1 116	919	576	1 000
Madagascar	1 640	2 227	2 498	1 911	2 180	2 646	2 878	3 191	3 373	3 352
Malawi	786	877	1 025	1 347	1 270	1 626	1 383	1 533	1 530	1 550
Mauritius	4 068	4 506	5 100	4 328	5 100	6 011	6 246	5 832	6 497	5 732
Mozambique	2 554	2 920	3 390	3 369	3 295	4 390	4 967	4 896	5 780	4 900
Namibia	3 560	4 318	4 537	4 687	5 211	5 658	5 651	5 414	5 382	5 271
Seychelles	855	943	966	907	910	1 020	1 234	1 456	1 374	1 297
South Africa	79 570	93 220	102 272	82 959	107 392	126 970	118 270	113 448	109 469	96 713
Swaziland	1 938	1 985	1 785	1 876	2 062	2 343	1 741	1 905	1 905	1 473
Tanzania	3 183	4 108	5 108	4 964	5 831	6 990	8 318	7 837	9 362	9 895
Zambia	4 190	5 456	5 953	4 841	7 772	9 495	10 630	11 366	10 544	7 902
Zimbabwe	2 515	81	1 968	2 250	3 245	3 557	3 884	3 507	3 842	2 704
SADC Total	146 928	178 296	212 401	164 165	212 167	258 695	254 920	252 773	246 557	220 348

Table 10: Trade balance (Million US \$) in SADC, 2006 – 2015

SADC Member States	2006	2007	2008	2009	2010	2011	2012	2013	2014	2015
Angola	16 925	18 112	20 882	- 3 469	15 890	23 908	25 730	20 837	13 334	9 000
Botswana	1 842	1 523	- 588	- 1 754	- 975	- 563	- 1 753	11	1 119	23
DRC	- 856	- 1 102	- 1 128	- 1 745	- 2 030	- 1 733	- 2 151	- 1 351	- 1 173	- 763
Lesotho	- 933	- 1 052	- 935	- 1 144	- 1 484	- 1 353	- 1 573	- 1 331	- 1 607	- 1 300
Madagascar	- 885	- 1 597	- 2 858	- 2 500	- 1 578	- 1 542	- 1 484	- 1 371	- 1 163	- 983
Malawi	- 534	- 661	- 982	- 890	- 845	- 1 235	- 1 196	- 1 422	- 1 544	- 1 550
Mauritius	- 708	- 725	- 1 269	- 827	- 1 096	- 1 455	- 1 388	- 1 588	- 1 457	- 1 126
Mozambique	- 910	- 859	- 1 137	- 1 271	- 1 538	- 2 821	- 7 069	- 8 648	- 8 907	- 5 618
Namibia	306	- 456	- 1 043	- 1 861	- 1 407	- 1 485	- 2 179	- 2 027	- 2 685	- 2 845
Seychelles	- 134	- 20	- 77	- 73	- 140	- 170	- 180	- 89	- 211	- 124
South Africa	- 4 701	- 3 993	- 4 652	1 205	4 659	3 618	- 5 122	- 8 323	- 6 518	- 3 172
Swaziland	- 341	- 365	- 456	- 528	- 581	353	- 156	- 6	218	288
Tanzania	- 1 471	- 2 772	- 3 325	- 2 544	- 3 230	- 5 147	- 4 622	- 5 958	- 5 003	- 2 161
Zambia	600	780	270	346	1 560	1 110	242	- 1 019	- 656	- 2 135
Zimbabwe	- 472	- 121	- 949	- 3 958	- 2 619	- 5 039	- 3 600	- 4 197	- 3 611	- 4 309
SADC Total	7 729	6 694	1 753	- 21 013	4 586	6 447	- 6 501	- 16 483	- 19 864	- 16 775

Table 11: Imports of Goods and Services as a % of GDP in SADC, 2006 – 2015

SADC Member States	2006	2007	2008	2009	2010	2011	2012	2013	2014	2015
Angola	31.2	40.2	48.9	63.6	42.6	39.3	35.9	36.1	34.6	43.4
Botswana	34.1	40.6	51.0	51.9	51.3	52.5	60.3	61.9	55.2	49.5
DRC	25.3	46.7	46.1	42.3	54.8	49.7	40.8	41.3	40.2	29.9
Lesotho	119.1	118.0	100.1	102.2	101.2	93.2	100.3	89.6	85.7	115.1
Madagascar	45.8	52.1	56.9	51.6	43.0	42.3	44.0	43.0	42.5	44.5
Malawi	33.0	34.7	37.7	36.1	30.4	35.7	45.1	57.4	51.7	49.2
Mauritius	70.9	67.2	66.1	58.3	63.8	66.3	66.7	62.3	63.1	59.6
Mozambique	41.0	39.9	39.2	41.3	46.2	54.9	78.5	84.0	84.8	68.0
Namibia	42.3	55.8	66.9	73.1	60.7	57.5	60.2	58.5	62.8	67.6
Seychelles	97.3	93.2	107.5	115.4	108.2	116.8	133.4	117.4	117.5	104.2
South Africa	31.0	32.5	37.2	27.5	27.4	29.6	31.0	33.2	33.1	31.9
Swaziland	72.0	70.0	69.5	66.7	58.4	40.1	38.9	41.2	37.5	28.9
Tanzania	25.0	31.7	30.8	26.3	29.1	36.0	33.1	31.1	29.8	26.3
Zambia	28.4	33.1	31.0	28.8	30.6	35.7	39.6	44.1	41.3	47.1
Zimbabwe	42.6	2.9	45.2	76.1	62.0	78.5	60.0	57.1	52.5	44.9
SADC Average	32.8	35.9	41.4	37.3	34.1	35.9	36.7	38.4	37.8	37.6

Table 12: Exports of Goods and Services as a % of GDP in SADC, 2006 – 2015

SADC Member States	2006	2007	2008	2009	2010	2011	2012	2013	2014	2015
Angola	63.5	67.9	72.5	58.7	61.5	60.7	55.9	51.3	43.8	50.9
Botswana	52.3	54.5	45.7	34.8	43.6	48.9	48.4	61.9	62.3	49.7
DRC	19.3	40.0	40.2	31.4	45.4	43.0	33.5	37.2	36.9	27.8
Lesotho	53.5	52.1	50.0	42.1	39.7	44.8	41.6	36.6	22.6	50.0
Madagascar	29.8	30.3	26.5	22.4	25.0	26.7	29.0	30.1	31.6	34.4
Malawi	19.6	19.8	19.3	21.8	18.2	20.3	24.2	29.8	25.7	24.6
Mauritius	60.4	57.9	52.9	49.0	52.5	53.4	54.6	49.0	51.5	49.8
Mozambique	30.2	30.8	29.3	30.0	31.5	33.4	32.4	30.4	33.4	31.7
Namibia	46.3	50.5	54.4	52.3	47.8	45.5	43.4	42.5	41.9	43.9
Seychelles	84.1	91.3	99.6	106.8	93.8	100.2	116.4	110.6	101.8	95.1
South Africa	29.3	31.2	35.6	27.9	28.6	30.4	29.7	31.0	31.3	30.9
Swaziland	61.2	59.1	55.3	52.0	45.6	47.2	35.7	41.1	42.3	35.9
Tanzania	17.1	18.9	18.6	17.4	18.7	20.8	21.3	17.7	19.4	21.6
Zambia	33.2	38.6	32.5	31.0	38.3	40.5	40.5	40.5	38.8	37.1
Zimbabwe	35.9	1.2	30.5	27.6	34.3	32.5	31.1	26.0	27.1	17.3
SADC Average	34.6	37.3	41.8	33.1	34.8	36.8	35.8	36.0	35.0	35.0

Table 13: Total External Debt stock at end of year (Million US \$) in SADC, 2006 – 2015

SADC Member States	2006	2007	2008	2009	2010	2011	2012	2013	2014	2015
Angola	7 595	9 806	14 801	15 125	17 829	20 992	22 583	28 178	35 933	39 025
Botswana	356	326	349	290	1 367	1 926	1 939	1 881	1 888	1 805
DRC	10 522	10 973	10 879	13 610	6 166	6 059	6 278	6 606	8 202	8 500
Lesotho	634	673	682	702	724	788	867	841	837	958
Madagascar	1 964	2 627	3 660	4 749	5 135	3 894	4 384	4 651	4 728	4 886
Malawi	982	900	709	800	877	1 081	1 363	1 496	1 543	2 019
Mauritius	698	953	771	1 473	1 704	2 575	2 658	2 893	3 197	3 121
Mozambique	3 282	3 498	3 818	4 129	3 921	3 921	4 829	5 798	7 229	7 842
Namibia	368	421	417	376	421	899	1 141	1 121	1 150	1 175
Seychelles	540	693	1 322	571	376	503	446	478	511	437
South Africa	59 396	75 316	72 869	78 561	104 456	118 180	141 791	136 516	145 082	124 070
Swaziland	442	498	445	672	772	598	549	612	678	678
Tanzania	4 813	5 895	6 409	7 642	8 363	8 960	10 527	12 790	14 400	18 329
Zambia	3 200	2 600	1 200	3 795	3 487	2 900	3 100	3 513	4 789	6 403
Zimbabwe	4 246	4 607	4 690	6 289	6 695	7 385	7 497	8 934	10 838	10 924
SADC Total	99 038	119 787	123 020	138 785	162 293	180 661	209 952	216 309	241 005	230 172

Table 14: Debt/GDP ratio in SADC (%), 2006 – 2015

SADC Member States	2006	2007	2008	2009	2010	2011	2012	2013	2014	2015
Angola	14.5	15.0	16.7	21.5	21.3	18.8	17.6	20.6	24.7	32.6
Botswana	3.5	3.0	3.2	2.8	10.7	12.2	13.2	12.7	11.9	12.6
DRC	73.6	67.0	56.8	85.0	28.6	23.4	21.4	20.2	22.8	22.6
Lesotho	44.6	42.2	36.5	36.9	30.0	28.1	32.3	33.5	32.9	47.9
Madagascar	35.7	35.8	38.9	55.6	58.8	39.4	44.2	43.9	44.3	50.2
Malawi	24.6	20.3	13.3	12.9	12.6	13.5	23.8	29.1	25.9	32.0
Mauritius	10.4	12.2	8.0	16.7	17.5	22.9	23.2	24.3	25.3	27.1
Mozambique	38.8	36.9	33.0	36.7	37.5	29.9	31.5	36.0	41.7	50.7
Namibia	4.8	4.9	5.0	4.2	3.9	7.2	8.8	8.8	8.9	9.8
Seychelles	53.1	67.0	136.4	67.3	38.8	49.3	42.1	36.3	37.9	32.0
South Africa	21.9	25.2	25.4	26.4	27.8	28.3	35.6	37.3	41.4	39.6
Swaziland	14.0	14.8	13.8	18.6	17.1	12.1	11.3	13.2	15.1	16.5
Tanzania	25.9	27.1	23.4	26.7	26.9	26.6	26.9	28.8	29.9	40.0
Zambia	25.4	18.4	6.5	24.3	17.2	12.4	11.8	12.5	17.6	30.0
Zimbabwe	60.6	66.2	72.7	77.1	70.8	67.4	60.1	66.2	76.3	70.0
SADC Average	23.3	25.1	24.2	28.0	26.6	25.7	29.5	30.8	34.2	36.5

Table 16: International Reserves stock at end of year in SADC (Million US \$), 2006 – 2015

SADC Member States	2006	2007	2008	2009	2010	2011	2012	2013	2014	2015
Angola	8 172	11 191	17 499	12 621	17 327	27 514	32 155	32 213	27 795	23 901
Botswana	7 993	9 790	9 118	8 704	7 886	8 082	7 628	7 839	8 383	7 546
DRC	547	114	50	129	1 300	1 273	1 690	1 745	1 644	1 216
Lesotho	697	1 178	1 358	1 264	1 362	1 344	1 043	1 136	1 118	1 074
Madagascar	574	847	982	1 135	1 172	1 279	1 191	911	774	832
Malawi	144	138	158	102	279	190	239	404	588	641
Mauritius	1 301	1 821	1 780	2 302	2 601	2 778	3 046	3 491	3 919	4 260
Mozambique	1 181	1 445	1 578	1 929	2 002	2 304	2 605	2 996	2 882	2 196
Namibia	1 353	952	1 278	1 846	1 495	1 762	1 705	1 619	1 350	1 924
Seychelles	75	26	73	195	255	279	307	425	464	536
South Africa	25 613	32 979	34 099	39 706	43 834	48 860	50 735	49 587	49 102	45 787
Swaziland	369	571	757	874	674	513	657	756	738	738
Tanzania	2 137	2 724	2 873	3 553	3 948	3 745	4 068	4 676	4 577	4 094
Zambia	720	690	1 085	1 924	2 119	2 438	3 069	2 677	3 134	3 023
Zimbabwe	155	146	76	822	732	659	574	331	349	369
SADC Total	51 031	64 612	72 764	77 107	86 984	103 019	110 713	110 806	106 817	98 136

Table 17: Life Expectancy at birth (Total) in SADC, number of years, 2006 – 2015

SADC Member States	2006	2007	2008	2009	2010	2011	2012	2013	2014	2015
Angola	49.0	49,5	49.9	48.0	50.7	51.1	48.7	48.9	60.2	52.7
Botswana	51.4	52.2	52.8	53.2	53.3	68.0	68.0	68.0	68.0	66.1
DRC	47.2	47.4	47.6	47.8	48.1	48.4	48.7	56.0	56.0	59.1
Lesotho	44.8	45.4	46.1	46.9	47.6	42.5	43.1	43.6	44.0	45.0
Madagascar	64.8	65.4	65.9	66.2	66.5	66.7	66.9	64.7	65.2	65.5
Malawi	46.4	47.0	47.6	51.7	52.5	53.4	54.3	55.1	56.0	56.2
Mauritius	72.7	72.9	73.2	73.3	73.6	73.9	74.1	74.2	74.4	74.5
Mozambique	47.4	50.9	51.3	51.7	52.1	52.4	52.8	53.1	53.5	53.8
Namibia	59.5	60.3	61.1	61.7	62.2	62.5	62.6	62.8	62.9	63.0
Seychelles	72.2	73.1	72.9	72.9	73.2	72.6	74.2	73.1	73.2	74.2
South Africa	53.0	54.7	56.0	57.3	58.2	58.7	59.3	60.2	61.2	62.5
Swaziland	46.3	45.2	45.2	45.1	45.1	45.2	45.3	45.5	45.6	45.7
Tanzania	53.0	54.0	54.0	54.0	55.0	55.0	61.0	61.0	61.0	61.0
Zambia	51.9	51.4	51.3	51.2	51.2	52.7	52.8	53.0	53.2	53.3
Zimbabwe	44.8	45.9	47.2	48.6	50.0	51.4	60.7	60.7	60.7	60.7

Table 18: Total Fertility Rate in SADC, per woman, 2006 – 2015

SADC Member States	2006	2007	2008	2009	2010	2011	2012	2013	2014	2015
Angola	6.1	5.9	5.7	6.3	6.1	5.9	5.8	5.6	5.7	5.3
Botswana	3.0	2.9	2.9	2.8	2.8	2.7	2.7	2.6	2.6	2.3
DRC	6.3	6.2	6.0	5.9	5.8	5.7	6.0	6.6	6.6	5.9
Lesotho	3.5	3.4	3.3	3.3	3.2	3.3	3.3	3.3	3.2	3.2
Madagascar	5.0	4.9	4.8	4.8	4.7	4.6	4.6	5.0	4.4	5.0
Malawi	6.3	6.3	6.2	6.2	6.1	6.1	6.1	6.0	6.0	6.0
Mauritius	1.8	1.7	1.7	1.6	1.6	1.6	1.5	1.4	1.4	1.4
Mozambique	5.3	5.7	5.7	5.6	5.6	5.6	5.5	5.4	5.3	5.2
Namibia	3.6	3.4	3.4	3.3	3.2	3.6	3.6	3.6	3.6	3.6
Seychelles	2.1	2.2	2.3	2.4	2.2	2.4	2.4	2.4	2.3	2.4
South Africa	2.7	2.7	2.7	2.7	2.6	2.6	2.6	2.6	2.4	2.6
Swaziland	3.7	3.9	3.9	3.8	3.8	3.7	3.6	3.6	3.6	3.5
Tanzania	5.6	5.4	5.3	5.2	5.1	5.0	5.2	5.2	5.2	5.2
Zambia	5.7	5.6	5.6	5.6	5.9	5.9	5.8	5.7	5.6	5.6
Zimbabwe	3.6	3.5	3.4	3.4	3.3	3.2	3.8	n.a.	4.3	na

Table 19: Net Enrollment ratio in secondary schools (Total) in SADC, 2006 – 2015

SADC Member States	2006	2007	2008	2009	2010	2011	2012	2013	2014	2015
Angola	n.a	n.a	11.0	11.5	13.5	n.a	n.a	n.a	n.a	n.a
Botswana	62.2	63.2	65.6	n.a	n.a	65.8	64.1	n.a	n.a	n.a
DRC	n.a	n.a	n.a	n.a	n.a	n.a	n.a	n.a	n.a	n.a
Lesotho	23.9	27.0	29.0	31.5	34.2	35.8	36.5	37.3	37.7	n.a
Madagascar	17.4	21.2	n.a	n.a	n.a	n.a	n.a	n.a	n.a	n.a
Malawi	24.5	24.5	26.5	26.9	28.3	29.3	29.5	n.a.	n.a	n.a
Mauritius	69.5	69.7	66.8	68.6	68.6	69.1	70.3	70.4	70.6	72.2
Mozambique	8.9	10.9	12.6	15.0	16.5	16.5	21.2	20.9	21.4	21.9
Namibia	51.1	52.6	54.5	54.8	55.7	57.1	n.a	n.a	n.a	n.a
Seychelles	99.0	94.3	99.7	98.5	99.0	98.4	98.3	99.4	97.0	99.0
South Africa	88.0	89.7	89.2	89.0	88.7	90.1	90.5	90.3	n.a	n.a
Swaziland	27.8	29.2	n.a.	29.5	47.2	40.5	40.5	41.0	50.4	50.4
Tanzania	13.1	20.6	23.5	27.8	29.9	32.1	34.3	28.8	29.6	29.6
Zambia	22.2	24.6	25.2	21.1	29.5	24.8	28.7	28.0	27.9	28.1
Zimbabwe	37.1	n.a	n.a	44.5	n.a	n.a	50.0	n.a	n.a	n.a

Table 20: Total Labor Force (000s) in SADC, 2006 – 2015

SADC Member States	2006	2007	2008	2009	2010	2011	2012	2013	2014	2015
Angola	7 546	7 769	8 006	8 278	7 112	7 365	n.a	n.a.	7 183	n.a
Botswana	640	947	695	705	705	802	802	900	900	n.a
DRC	21 570	22 249	22 919	23 642	24 386	25 148	25 930	n.a.	n.a	n.a
Lesotho	895	906	1 462	1 462	1 462	1 483	1 483	1 483	1 483	1 483
Madagascar	8 776	9 060	9 354	9 681	n.a	n.a	n.a	n.a	n.a	n.a
Malawi	5 782	5 943	6 109	6 309	6 761	6 982	7 203	8 209	n.a	n.a
Mauritius	532	528	532	540	552	549	556	571	576	585
Mozambique	10 265	10 589	10 896	11 219	11 555	11 902	12 258	12 624	13 001	13 392
Namibia	711	735	760	783	869	895	868	n.a	991	n.a
Seychelles	34	33	33	35	38	40	41	42	44	48
South Africa	17 340	17 338	17 971	17 670	17 393	17 662	18 064	19 752	20 228	21 211
Swaziland	370	380	390	402	327	424	435	375	377	377
Tanzania	18 822	18 713	19 354	21 533	20 655	22 802	23 076	23 733	22 322	22 640
Zambia	4 924	n.a.	5 004	n.a.	5 232	n.a.	5 966	n.a.	6 329	n.a.
Zimbabwe	5 012	4 984	4 938	5 028	6 617	6 816	5 121	n.a	7 045	7 045