

Table 1: Population in SADC-Midyear ("000), 2001- 2011

	% share in 2011	2001	2002	2003	2004	2005	2006	2007	2008	2009	2010	2011
Angola	6.4	13,816	14,262	14,662	15,116	15,412	15,864	16,329	16,368	16,889	17,430	17,992
Botswana	0.7	1,622	1,667	1,691	1,711	1,708	1,739	1,757	1,776	1,798	1,822	1,849
D.R.C.	26.8	53,870	55,702	57,596	59,554	61,579	63,676	65,837	68,076	70,391	72,784	75,259
Lesotho	0.7	1,868	1,870	1,871	1,873	1,875	1,877	1,880	1,884	1,887	1,892	1,897
Madagascar	7.4	15,658	16,119	16,585	17,062	17,550	18,048	18,556	19,072	19,601	20,142	20,696
Malawi	5.1	10,816	11,175	11,549	11,938	12,341	12,758	12,900	13,077	13,520	13,948	14,389
Mauritius	0.5	1,200	1,210	1,223	1,233	1,243	1,253	1,260	1,269	1,275	1,281	1,286
Mozambique	8.2	17,656	18,083	18,514	18,962	19,420	19,889	20,632	21,208	21,803	22,417	23,049
Namibia	0.7	1,830	1,860	1,891	1,923	1,957	1,991	2,028	2,065	2,103	2,143	2,105
Seychelles	0.0	81	82	83	82	83	85	85	87	87	87	87
South Africa	18.0	44,600	45,400	46,430	46,587	46,888	47,391	47,850	48,687	49,320	49,991	50,587
Swaziland	0.4	1,030	1,056	1,081	1,105	1,011	1,015	1,018	1,032	1,044	1,055	1,067
Tanzania	15.8	32,884	33,585	34,250	35,268	37,083	38,251	39,446	40,668	41,916	43,188	44,485
Zambia	4.8	10,089	10,409	10,744	11,090	11,314	11,642	11,970	12,292	12,626	13,093	13,459
Zimbabwe	4.5	11,666	11,635	11,763	11,982	11,830	12,010	12,040	12,122	12,231	12,336	12,754
SADC region	100.0	218,686	224,115	229,933	235,486	241,294	247,488	253,588	259,683	266,491	273,609	280,961

Source: Figures submitted and validated by NSOs of SADC Member States

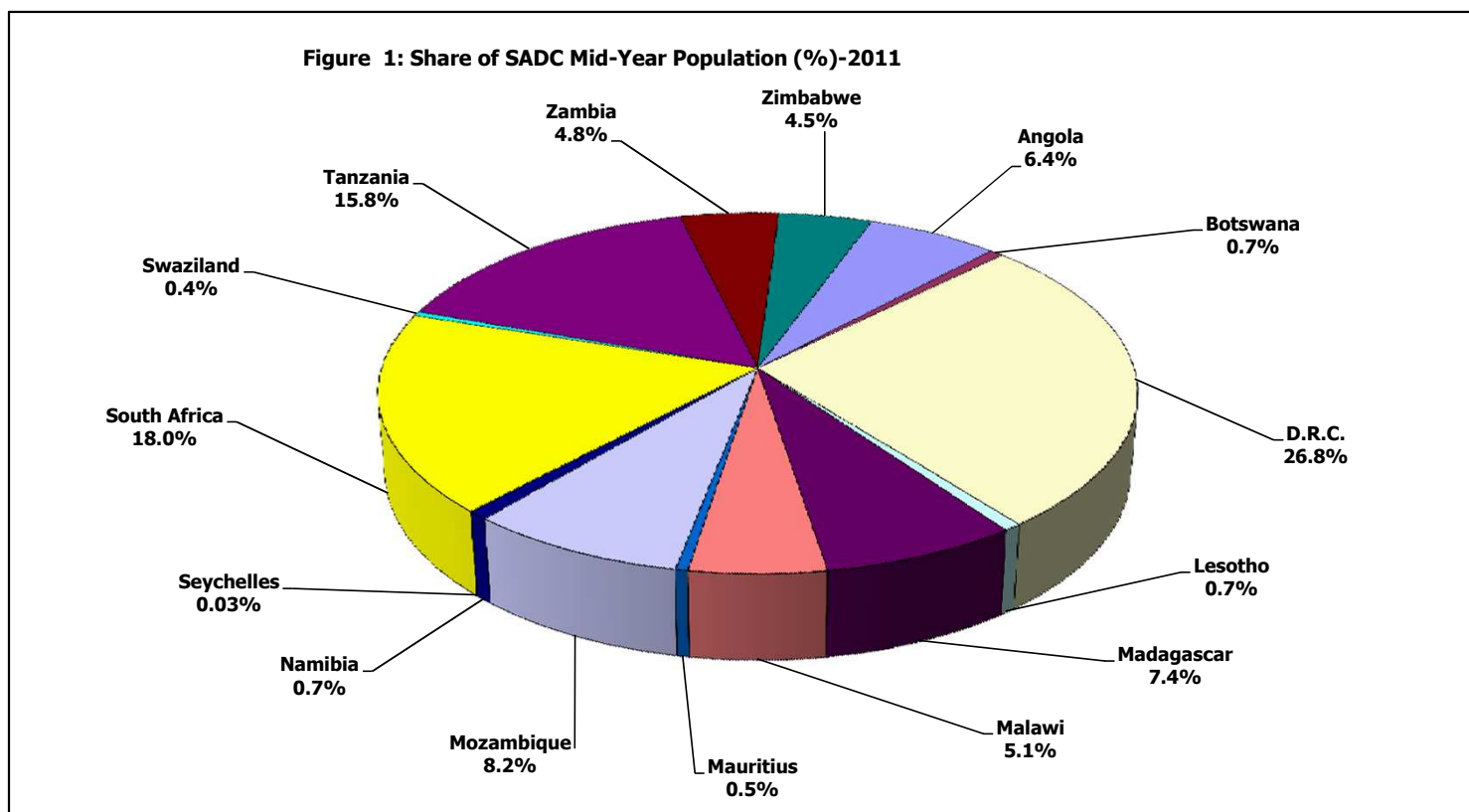


Table 2: Gross Domestic Product in SADC at Current Prices, (US \$ million), 2001-2011

	% share in 2011	2001	2002	2003	2004	2005	2006	2007	2008	2009	2010	2011
Angola	15.0	8,914	11,373	12,865	17,788	28,156	41,773	60,446	84,216	75,519	82,315	97,694
Botswana	2.7	6,077	6,118	8,169	10,033	10,256	10,986	12,623	12,237	11,721	14,913	17,425
D.R.C	2.5	11,335	6,812	5,676	6,530	7,193	8,828	10,030	11,895	11,200	13,191	16,113
Lesotho	0.4	707.1477	659.2986	965	1,246	1,360	1,423	1,596	1,618	1,726	2,180	2,366
Madagascar	1.5	4,528	4,396	5,471	4,364	5,039	5,517	7,342	9,413	8,545	8,739	10,025
Malawi	0.9	1,838	2,341	2,175	2,613	2,755	3,117	3,648	4,280	5,026	5,408	5,811
Mauritius	1.7	4,614	4,842	5,817	6,578	6,488	6,731	7,793	9,642	8,835	9,707	10,790
Mozambique	1.9	4,116	4,288	4,763	5,822	6,625	7,215	8,124	9,944	9,967	9,580	12,259
Namibia	2.0	3,551	3,374	4,908	6,668	6,997	7,830	8,622	8,684	8,937	10,718	12,705
Seychelles	0.2	616	694	700	857	937	1,038	1038	965	843	963	1014
South Africa	62.8	118,563	111,357	168,220	219,426	246,956	261,175	285,805	274,186	284,236	363,475	408,689
Swaziland	0.6	1,356	1,229	1,845	2,443	2,568	2,936	3,052	3,006	3,189	3,890	4,090
Tanzania	3.7	10,384	10,804	11,659	12,825	14,222	14,331	16,993	20,715	21,368	22,915	23,850
Zambia	3.0	3,654	3,790	4,341	5,444	7,179	10,703	11,541	14,639	12,806	16,191	19,238
Zimbabwe	1.4	7,776	7,378	6,956	6,660	6,456	6,330	6,249	5,701	6,133	7,433	8,865
SADC region	100.0	188,026	179,455	244,530	309,299	353,185	389,932	444,903	471,140	470,051	571,617	650,935

Source: Figures submitted and validated by NSOs of SADC Member States

Figure 2: Share of GDP (%) for SADC Member States-2011

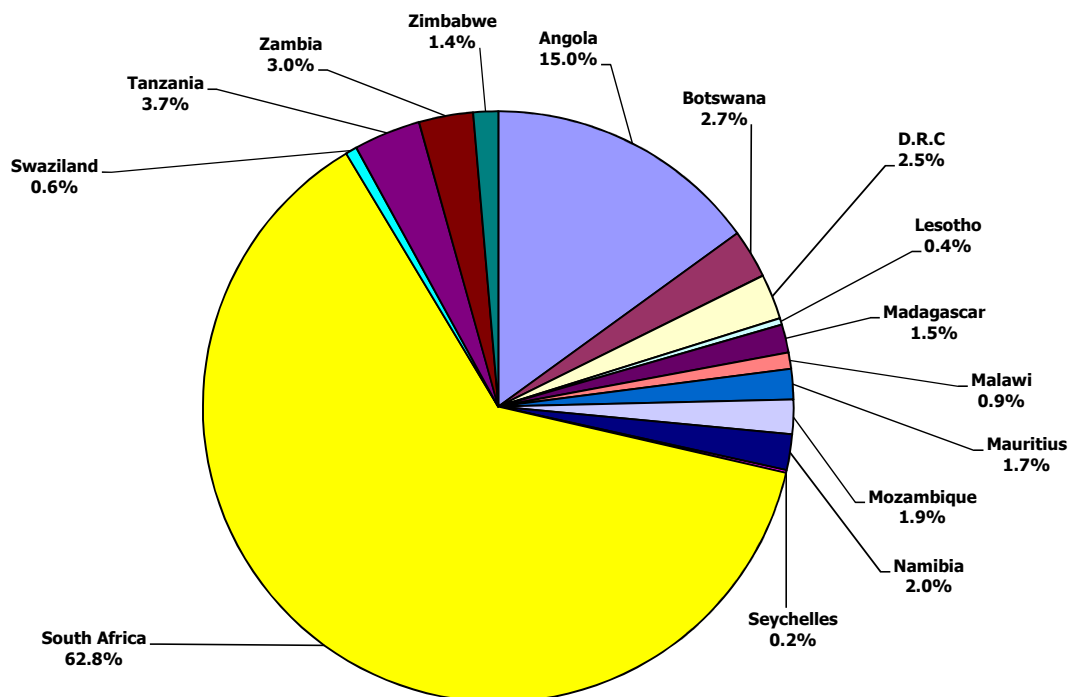


Table 3: Gross Domestic Product Annual Growth Rates (%) in SADC, 2001-2011

	2001	2002	2003	2004	2005	2006	2007	2008	2009	2010	2011
Angola	3.1	14.4	3.4	12.0	20.6	18.6	23.2	13.8	2.4	3.5	3.9
Botswana	3.5	9.0	6.3	6.0	1.6	5.1	4.8	2.9	-4.8	7.0	5.7
D.R.C	-2.1	2.9	5.6	6.7	6.2	5.3	6.3	6.2	2.9	7.2	6.9
Lesotho	4.2	0.5	4.7	2.3	2.7	4.3	4.7	5.4	2.9	5.6	4.3
Madagascar	6.0	-12.7	9.8	5.3	4.6	4.9	6.2	7.1	-4.1	-0.5	0.5
Malawi	-4.1	2.1	5.7	5.4	3.3	4.7	9.6	8.3	8.9	6.7	4.3
Mauritius	3.2	1.6	6.0	4.3	1.5	4.5	5.9	5.5	3.0	4.2	4.1
Mozambique	12.3	9.2	6.5	7.9	8.4	8.7	7.3	6.8	6.3	6.6	7.3
Namibia	1.2	4.8	4.2	12.3	2.5	7.1	5.4	3.4	-1.1	6.6	4.8
Seychelles	-2.3	1.3	-6.3	-2.8	8.0	8.9	9.9	-1.0	0.5	6.7	5.0
South Africa	2.7	3.7	2.9	4.6	5.3	5.6	5.5	3.6	-1.5	2.9	3.1
Swaziland	1.2	1.8	2.2	2.9	2.5	3.3	3.5	2.4	1.2	1.9	1.3
Tanzania	6.0	7.2	6.9	7.8	7.4	6.7	7.1	7.4	6.0	7.0	6.4
Zambia	4.9	3.3	5.1	5.4	5.3	6.2	6.2	5.7	6.4	7.6	6.8
Zimbabwe	-0.2	-5.9	-7.5	-3.6	-4.1	-3.6	-3.3	-4.7	12.7	9.6	10.3
SADC-Average(weig hted on GDP share)	2.7	4.0	3.3	5.3	6.3	6.9	8.0	5.8	0.2	3.7	3.8

Source: Figures submitted and validated by NSOs of SADC Member States

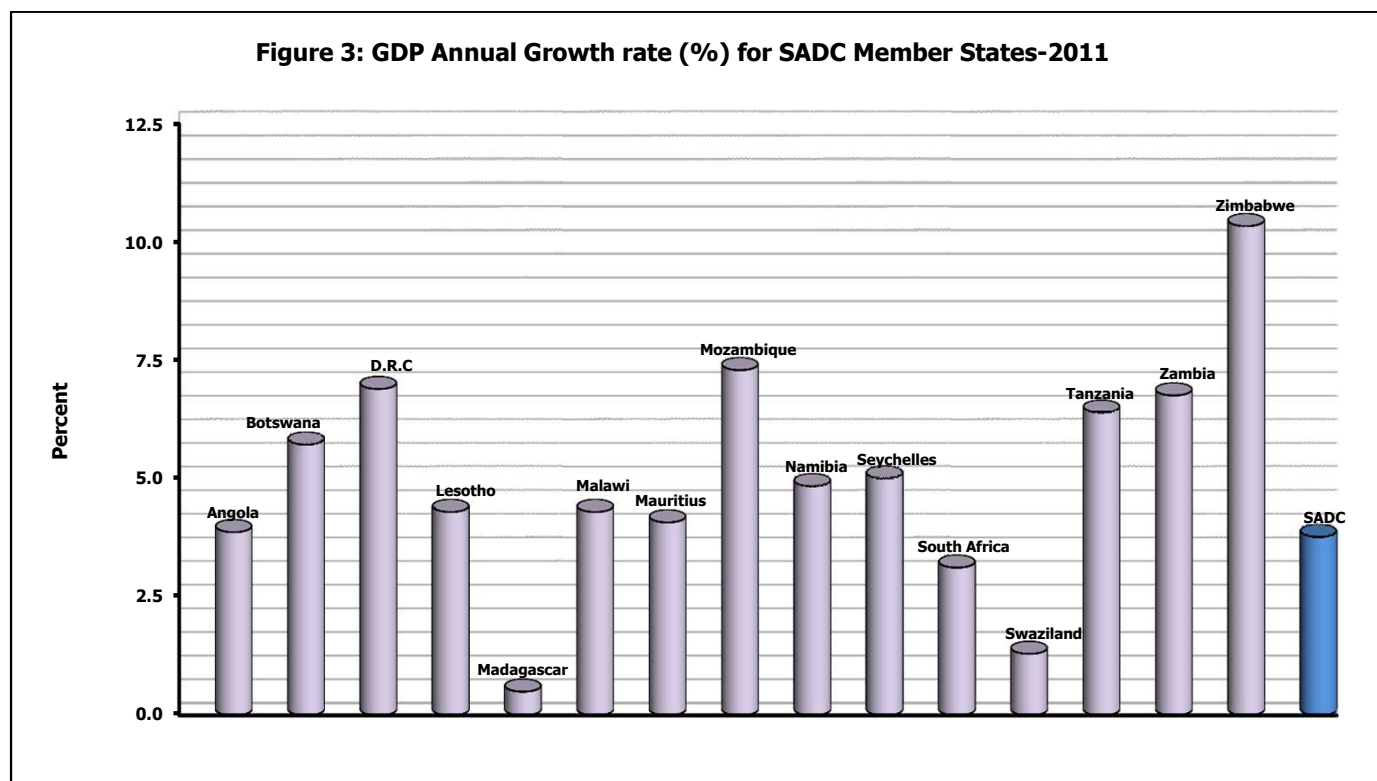


Table 4: Per Capita Gross Domestic Product at Current Prices, (US \$ per head), 2001-2011

	2001	2002	2003	2004	2005	2006	2007	2008	2009	2010	2011
Angola	645	797	877	1177	1827	2633	3702	5145	4471	4723	5430
Botswana	3746	3670	4831	5864	6005	6317	7185	6890	6519	8171	8605
D.R.C	210	122	99	110	117	139	152	175	159	181	214
Lesotho	379	353	516	665	725	758	849	859	915	1152	1259
Madagascar	289	273	330	256	287	306	396	494	436	434	484
Malawi	170	209	188	219	223	244	283	327	372	388	404
Mauritius	3845	4001	4756	5335	5220	5372	6185	7598	6929	7578	8390
Mozambique	233	237	257	307	341	363	394	469	457	427	532
Namibia	1940	1814	2596	3468	3575	3933	4252	4205	4250	5001	6036
Seychelles	7580	8489	8455	10393	11304	12265	12210	11092	9658	11066	11596
South Africa	2658	2453	3623	4710	5267	5511	5973	5632	5763	7271	8079
Swaziland	1317	1164	1707	2211	2540	2892	2998	2912	3055	3687	3830
Tanzania	316	322	340	364	393	382	444	525	525	546	536
Zambia	362	364	404	491	627	907	949	1169	993	1241	1429
Zimbabwe	667	634	591	556	546	527	519	470	501	603	695
SADC	860	801	1063	1313	1,468	1,579	1,761	1,821	1,770	2,099	2,316

Source: Figures submitted and validated by NSOs of SADC Member States

Figure 4: GDP Per Capita (US \$) for Member States and SADC region-2011

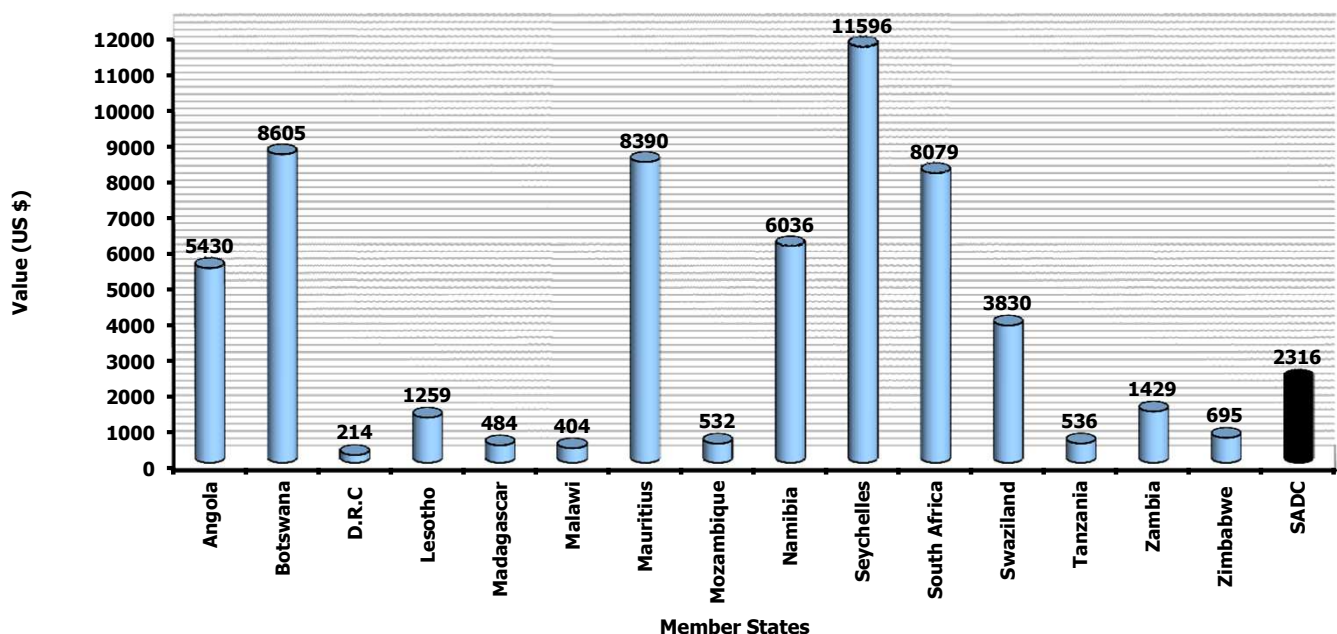


Table 5: Annual Inflation Rates (%) for the SADC Member States, 2001-2011

	2001	2002	2003	2004	2005	2006	2007	2008	2009	2010	2011
Angola	116.1	105.6	76.6	31.0	18.5	13.4	11.8	13.2	14.0	15.3	11.4
Botswana	6.6	8.0	9.2	7.0	8.6	11.6	7.1	12.6	8.2	6.9	8.5
DRC	135.1	16.9	13.8	11.0	15.9	21.4	22.3	44.7	29.0	17.2	12.6
Lesotho	5.4	5.2	5.1	5.0	4.3	6.1	6.6	10.7	7.3	3.6	5.0
Madagascar	7.3	15.9	-1.2	13.4	18.3	11.5	10.4	9.2	9.0	9.2	9.5
Malawi	22.7	14.8	9.6	11.5	16.4	13.9	8.0	8.7	8.4	7.4	7.6
Mauritius	5.4	6.4	3.9	4.7	4.9	8.9	8.8	9.7	2.5	2.9	6.5
Mozambique	22.3	9.0	11.4	9.3	13.1	8.1	12.1	11.8	2.0	17.4	6.1
Namibia	9.3	11.4	7.2	4.2	2.2	5.1	6.7	10.3	8.8	4.5	5.1
Seychelles	6.0	0.2	3.6	4.1	0.9	-0.4	5.3	37.0	31.8	-2.4	2.6
South Africa	0.7	9.2	5.8	1.4	3.4	4.7	7.1	11.5	7.1	4.3	5.0
Swaziland	7.5	11.7	7.4	3.4	5.5	5.3	8.2	13.1	7.6	4.5	6.1
Tanzania	5.1	4.3	5.3	4.7	5.0	7.3	7.0	10.3	12.1	5.5	12.7
Zambia	18.7	26.7	17.2	17.5	15.9	8.2	10.7	12.4	13.4	8.5	8.7
Zimbabwe	602.6	583.7	505.1	350.0	237.8	1016.7	6723.7	231000000.0	-7.7	3.1	3.5

Source: Figures submitted and validated by NSOs of SADC Member States

Figure 5: Annual Inflation rate for SADC region excluding Zimbabwe (%), 2001-2011

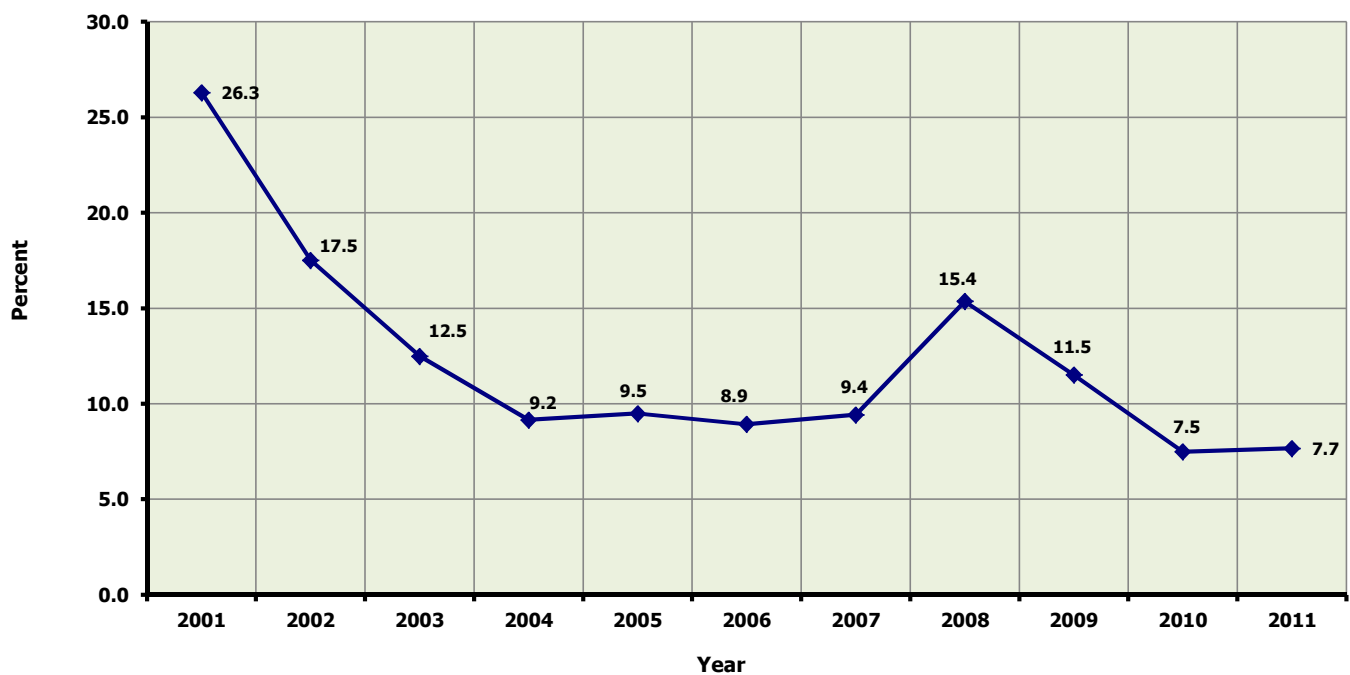


Table 6: Imports of Goods and Services, (US \$ million), 2001-2011

	% share in 2011	2001	2002	2003	2004	2005	2006	2007	2008	2009	2010	2011
Angola	18.9	6,697	7,094	8,802	10,366	15,103	16,281	26,303	43,140	41,844	35,534	45,185
Botswana	3.2	2,149	2,168	2,808	3,701	3,534	3,369	4,526	4,696	5,013	5,959	7,725
DRC	1.8	820	1,425	1,923	2,479	2,433	3,588	5,137	6,100	4,362	4,162	4,378
Lesotho	0.8	966	948	1,344	1,617	1,643	1,695	1,884	1,958	1,995	2,482	1,986
Madagascar	1.7	1,634	1,097	1,942	2,310	2,296	2,524	3,823	5,356	4,411	3,584	4,110
Malawi	1.0	542	800	883	1,129	1,438	1,468	1,520	1,784	2,095	2,254	2,432
Mauritius	3.0	2,851	2,819	3,148	3,628	4,167	4,776	5,235	6,373	5,152	6,197	7,168
Mozambique	2.4	1,356	2,361	2,393	2,755	2,941	2,837	3,107	4,004	3,599	3,498	5,659
Namibia	2.8	1,693	1,622	2,576	2,806	2,820	3,254	4,488	4,744	5,014	5,868	6,659
Seychelles	0.4	644	597	596	665	904	1,009	1,060	954	839	963	876
South Africa	50.3	30,919	32,391	42,967	58,633	68,779	84,760	97,781	106,492	80,395	100,106	120,274
Swaziland	1.2	1,330	1,242	1,881	2,137	2,341	2,319	2,349	2,064	2,158	2,632	2,965
Tanzania	5.9	2,210	2,144	2,660	3,343	4,228	5,116	6,984	8,035	7,511	8,838	14,004
Zambia	3.0	1,620	1,579	1,796	2,176	2,632	3,223	4,523	5,456	4,119	5,650	7,112
Zimbabwe	3.6	1,996	20	560	4,867	4,899	2,697	181	2,630	3,477	5,206	8,546
SADC region	100.0	57,425	58,304	76,278	102,613	120,158	138,916	168,900	203,786	171,984	192,932	239,078

Source: Figures submitted and validated by NSOs of SADC Member States

Figure 6: Share of Imports of Goods and Services (%) for SADC Member States-2011

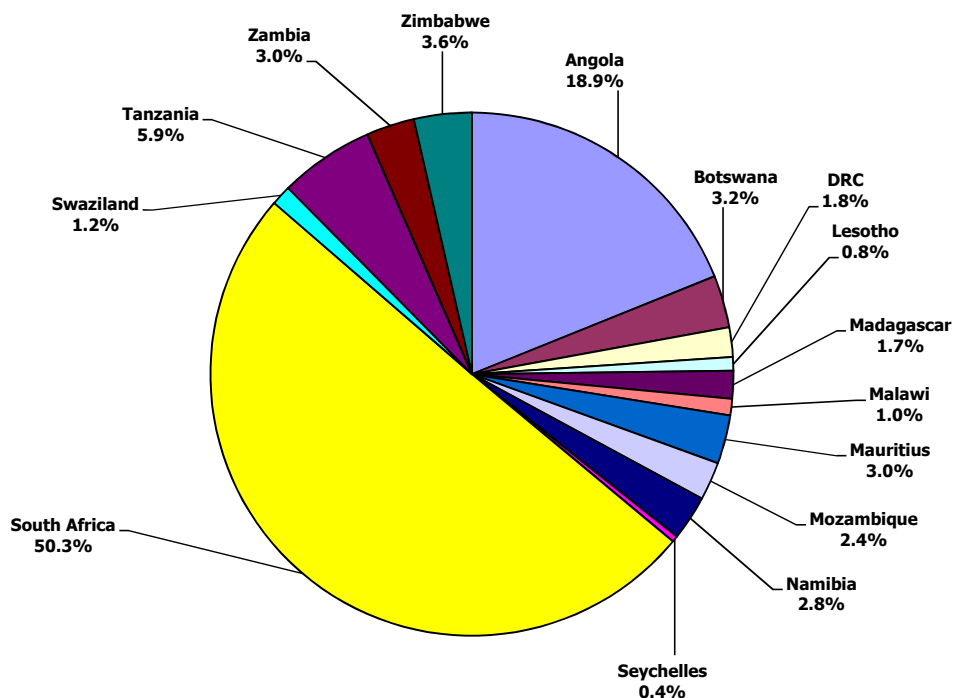


Table 7: Exports of Goods and Services in SADC, (US \$ million), 2001-2011

	% share in 2011	2001	2002	2003	2004	2005	2006	2007	2008	2009	2010	2011
Angola	28.6	6,742	8,535	9,710	13,450	24,219	33,329	44,705	64,272	41,466	51,260	68,908
Botswana	2.8	2,690	2,849	3,705	4,437	5,256	5,165	6,082	5,154	3,805	4,919	6,820
DRC	1.9	754	1,263	1,522	2,295	2,478	3,145	4,569	5,403	3,990	4,069	4,531
Lesotho	0.5	381	436	579	702	665	762	832	911	791	955	1,157
Madagascar	1.1	1,309	702	1,175	1,528	1,422	1,640	2,226	2,498	2,138	2,314	2,657
Malawi	0.6	439	487	581	652	663	705	919	1,078	1,266	1,362	1,421
Mauritius	2.4	3,137	2,983	3,258	3,508	3,829	4,068	4,509	5,104	4,326	5,099	5,841
Mozambique	1.4	871	1,070	1,251	1,735	2,018	2,196	2,510	3,005	2,763	2,716	3,453
Namibia	2.4	1,462	1,552	2,130	2,655	2,830	3,560	4,374	4,616	4,228	5,084	5,685
Seychelles	0.2	510	550	617	630	735	873	883	799	707	807	478
South Africa	48.8	35,720	36,662	46,900	57,978	67,617	78,368	89,962	98,118	77,892	99,386	117,790
Swaziland	1.1	1,154	1,176	1,863	2,075	2,236	2,249	2,309	1,784	1,771	2,062	2,643
Tanzania	3.1	1,766	1,899	2,164	2,520	2,961	3,233	4,119	5,208	4,963	6,378	7,460
Zambia	3.7	1,028	1,080	1,230	2,057	2,482	4,120	4,722	5,178	4,484	7,573	8,842
Zimbabwe	1.5	1,412	1	468	3,399	3,369	2,270	73	1,660	2,303	2,689	3,556
SADC region	100.0	59,375	61,247	77,153	99,620	122,781	145,684	172,795	204,790	156,893	196,672	241,242

Source: Figures submitted and validated by NSOs of SADC Member States

Figure7: Share of Exports of Goods and Services (%) for SADC Member States-2011

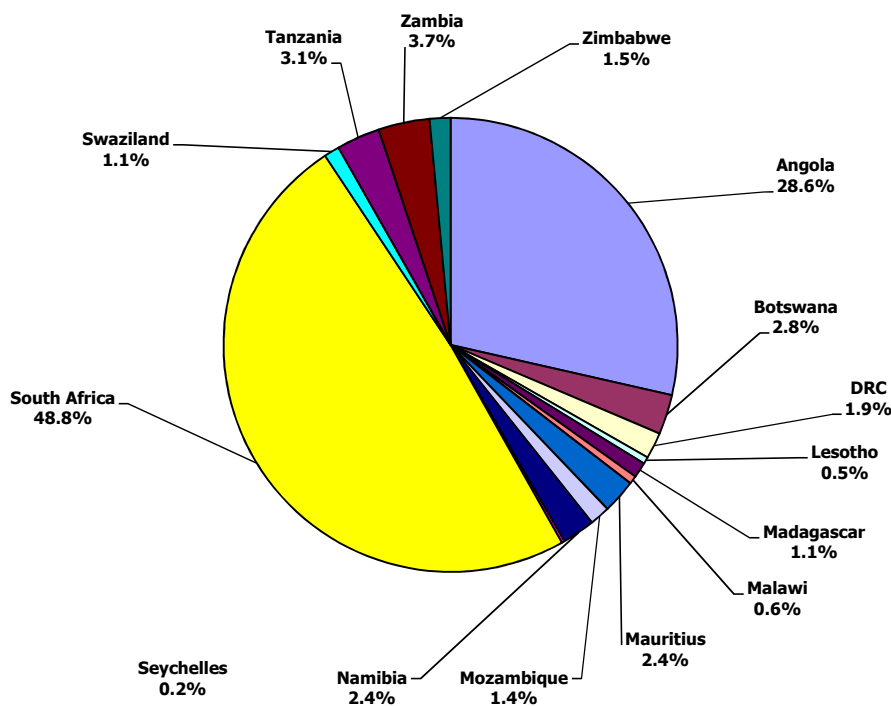


Table 8: Trade Balance in SADC (US \$ million), 2001-2011

	2001	2002	2003	2004	2005	2006	2007	2008	2009	2010	2011
Angola	45	1,442	908	3,084	9,117	17,049	18,402	21,131	-378	15,726	23,723
Botswana	541	682	897	736	1,722	1,796	1,556	458	-1,208	-1,040	-904
DRC	-66	-162	-401	-185	45	-443	-567	-697	-371	-93	153
Lesotho	-585	-511	-765	-915	-979	-933	-1,052	-1,048	-1,204	-1,527	-829
Madagascar	-325	-396	-767	-782	-874	-885	-1,597	-2,858	-2,273	-1,270	-1,453
Malawi	-103	-313	-302	-476	-775	-763	-602	-706	-829	-892	-1,011
Mauritius	286	164	110	-120	-337	-708	-725	-1,269	-826	-1,098	-1,327
Mozambique	-485	-1,291	-1,142	-1,020	-923	-641	-598	-999	-836	-782	-2,206
Namibia	-230	-70	-446	-151	10	306	-113	-128	-786	-784	-974
Seychelles	-133	-47	21	-35	-169	-137	-177	-155	-132	-155	-399
South Africa	4,801	4,272	3,933	-656	-1,162	-6,392	-7,819	-8,373	-2,503	-720	-2,484
Swaziland	-176	-65	-18	-62	-106	-70	-39	-280	-387	-570	-322
Tanzania	-444	-244	-495	-823	-1,267	-1,882	-2,865	-2,827	-2,548	-2,460	-6,544
Zambia	-592	-498	-566	-120	-150	897	198	-277	365	1,924	1,731
Zimbabwe	-584	-18	-92	-1,468	-1,530	-427	-108	-969	-1,175	-2,517	-4,990
SADC region	1,950	2,943	875	-2,993	2,623	6,768	3,895	1,004	-15,091	3,741	2,164

Source: Figures submitted and validated by NSOs of SADC Member States

Figure 8: Trend in Trade balance for SADC region, Angola and South Africa (\$ Million), 2001-2011

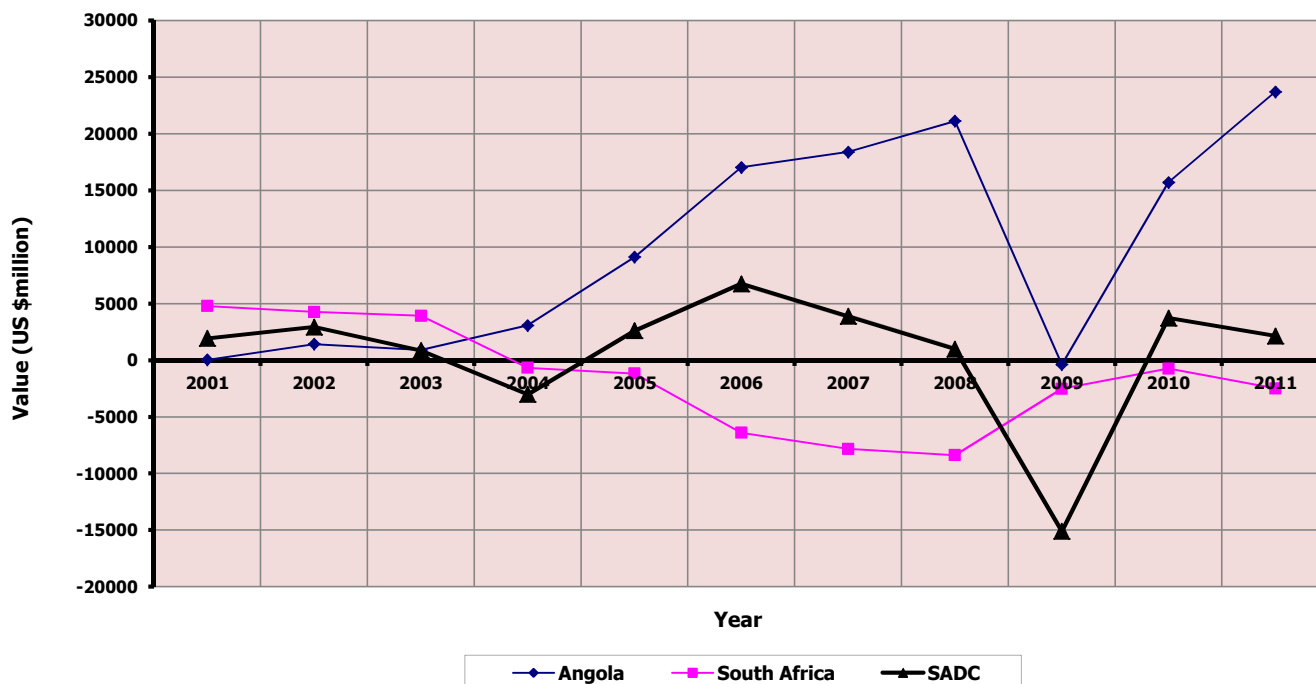


Table 9: Imports of goods and Services as Percent of Gross Domestic Product, 2001-2011

	2001	2002	2003	2004	2005	2006	2007	2008	2009	2010	2011
Angola	75.1	62.4	68.4	58.3	53.6	39.0	43.5	51.2	55.4	43.2	46.3
Botswana	35.4	35.4	34.4	36.9	34.5	30.7	35.9	38.4	42.8	40.0	44.3
DRC	7.2	20.9	33.9	38.0	33.8	40.6	51.2	51.3	38.9	31.6	27.2
Lesotho	136.5	143.7	139.4	129.8	120.9	119.1	118.0	121.0	115.6	113.9	83.9
Madagascar	36.1	25.0	35.5	52.9	45.6	45.8	52.1	56.9	51.6	41.0	41.0
Malawi	29.5	34.2	40.6	43.2	52.2	47.1	41.7	41.7	41.7	41.7	41.9
Mauritius	61.8	58.2	54.1	55.1	64.2	70.9	67.2	66.1	58.3	63.8	66.4
Mozambique	32.9	55.1	50.2	47.3	44.4	39.3	38.2	40.3	36.1	36.5	46.2
Namibia	47.7	48.1	52.5	42.1	40.3	41.6	52.0	54.6	56.1	54.7	52.4
Seychelles	104.6	86.0	85.1	77.6	96.5	97.3	102.1	98.9	99.5	100.0	86.4
South Africa	26.1	29.1	25.5	26.7	27.9	32.5	34.2	38.8	28.3	27.5	29.4
Swaziland	98.1	101.0	101.9	87.5	91.2	79.0	77.0	68.7	67.7	67.7	72.5
Tanzania	21.3	19.8	22.8	26.1	29.7	35.7	41.1	38.8	35.2	38.6	58.7
Zambia	44.3	41.7	41.4	40.0	36.7	30.1	39.2	37.3	32.2	34.9	37.0
Zimbabwe	25.7	0.3	8.1	73.1	75.9	42.6	2.9	46.1	56.7	70.0	96.4
SADC region	30.5	32.5	31.2	33.2	34.0	35.6	38.0	43.3	36.6	33.8	36.7

Source: Figures submitted and validated by NSOs of SADC Member States

Figure 9: Imports of Goods and Services as a % of GDP for SADC region, Angola, Botswana and South Africa, 2001-2011

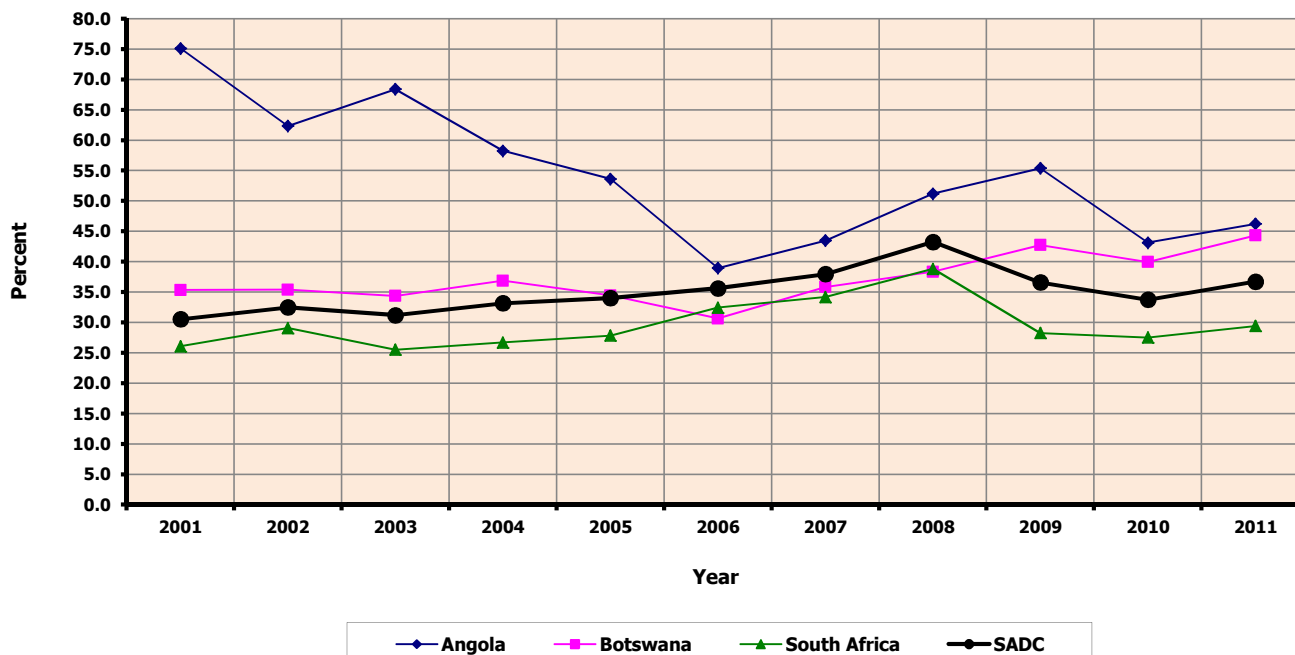


Table 10: Exports of Goods and Services as Percent (%) of Gross Domestic Product, 2001-2011

	2001	2002	2003	2004	2005	2006	2007	2008	2009	2010	2011
Angola	75.6	75.1	75.5	75.6	86.0	79.8	74.0	76.3	54.9	62.3	70.5
Botswana	44.3	46.6	45.4	44.2	51.2	47.0	48.2	42.1	32.5	33.0	39.1
DRC	6.7	18.5	26.8	35.1	34.5	35.6	45.6	45.4	35.6	30.8	28.1
Lesotho	53.9	66.2	60.1	56.4	48.9	53.5	52.1	56.3	45.8	43.8	48.9
Madagascar	28.9	16.0	21.5	35.0	28.2	29.7	30.3	26.5	25.0	26.5	26.5
Malawi	23.9	20.8	26.7	25.0	24.0	22.6	25.2	25.2	25.2	25.2	24.5
Mauritius	68.0	61.6	56.0	53.3	59.0	60.4	57.9	52.9	49.0	52.5	54.1
Mozambique	21.2	24.9	26.3	29.8	30.5	30.4	30.9	30.2	27.7	28.3	28.2
Namibia	41.2	46.0	43.4	39.8	40.4	45.5	50.7	53.2	47.3	47.4	44.7
Seychelles	82.9	79.3	88.1	73.5	78.5	84.1	85.1	82.9	83.9	83.9	47.1
South Africa	30.1	32.9	27.9	26.4	27.4	30.0	31.5	35.8	27.4	27.3	28.8
Swaziland	85.1	95.7	100.9	84.9	87.1	76.6	75.7	59.4	55.5	53.0	64.6
Tanzania	17.0	17.6	18.6	19.7	20.8	22.6	24.2	25.1	23.2	27.8	31.3
Zambia	28.1	28.5	28.3	37.8	34.6	38.5	40.9	35.4	35.0	46.8	46.0
Zimbabwe	18.2	0.0	6.7	51.0	52.2	35.9	1.2	29.1	37.5	36.2	40.1
SADC region	31.6	34.1	31.6	32.2	34.8	37.4	38.8	43.5	33.4	34.4	37.1

Source: Figures submitted and validated by NSOs of SADC Member States

Figure 10: Exports of Goods and Services as a % of GDP for SADC region, Angola, South Africa and Zambia, 2001-2011

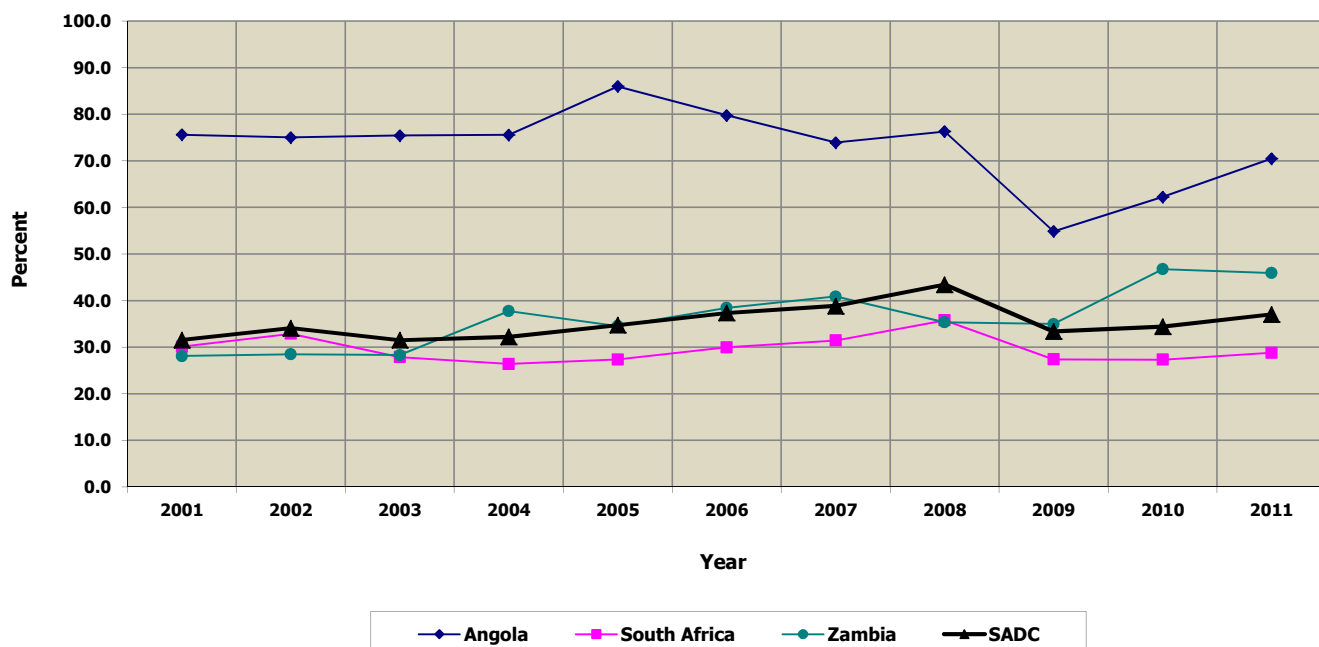


Table 11: Total External Debt, end of year (million US \$), 2001-2011

	% share in 2011	2001	2002	2003	2004	2005	2006	2007	2008	2009	2010	2011
Angola	9.0	9,234	9,189	9,316	9,521	9,800	11,240	6,900	16,603	18,547	17,980	16,204
Botswana	2.2	417	463	439	423	519	518	408	1,248	2,430	2,708	4,007
DRC	2.5	13,573	10,312	10,723	11,186	10,000	10,522	10,973	10,879	12,468	3,230	4,518
Lesotho	0.4	709	546	582	731	802	735	700	684	695	724	786
Madagascar	1.5	3,109	3,193	3,286	2,508	2,663	1,700	1,905	1,772	2,052	2,214	2,637
Malawi	0.6	2,420	2,470	2,480	2,600	3,000	982	900	709	800	877	1,081
Mauritius	0.8	987	955	942	960	944	698	849	693	955	1,097	1,367
Mozambique	3.5	5,123	3,606	3,939	4,406	4,649	3,334	3,287	6,102	3,402	6,478	6,337
Namibia	2.4	583	370	890	989	687	887	1,636	1,999	2,164	2,396	4,385
Seychelles	0.3	513	557	484	442	486	514	580	760	690	456	461
South Africa	61.7	31,061	34,002	39,309	45,014	48,593	59,396	75,316	72,869	78,561	104,381	111,462
Swaziland	0.2	407	289	361	424	432	456	524	480	471	497	382
Tanzania	5.0	6,586	7,040	7,767	8,455	8,219	4,813	5,895	6,409	7,867	9,746	8,960
Zambia	2.0	4,830	5,260	5,570	5,860	4,600	3,200	2,600	1,200	3,795	3,487	3,648
Zimbabwe	7.9	3,590	3,886	4,483	4,798	5,200	5,260	4,607	4,690	5,687	7,050	14,317
SADC region	100.0	83,142	82,138	90,571	98,317	100,594	104,255	117,080	127,097	140,583	163,321	180,550

Source: Figures submitted and validated by NSOs of SADC Member States

Figure 11: Share of External debt across SADC Member States(%)-2011

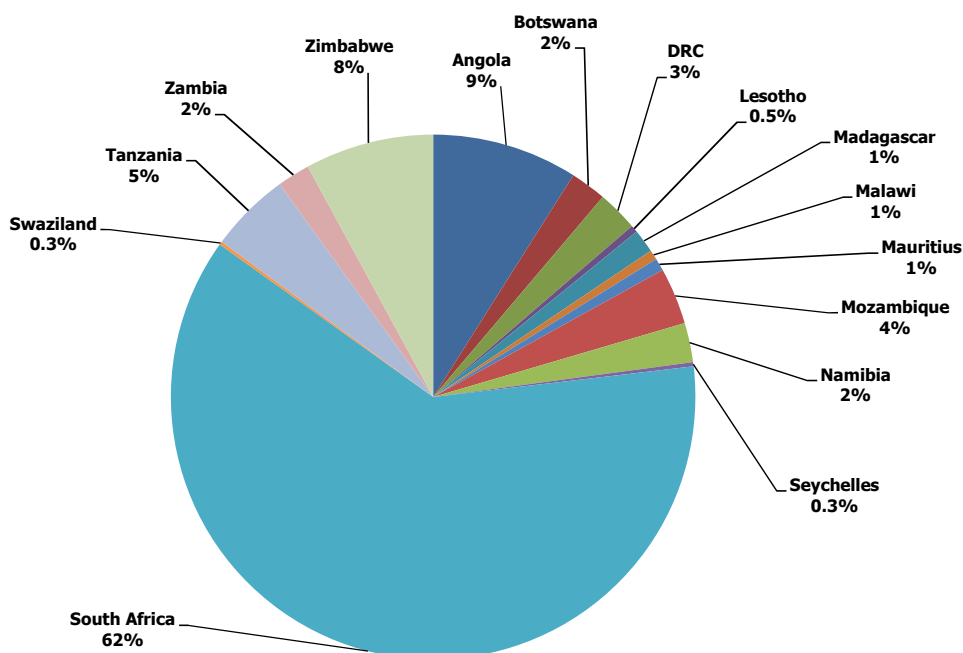


Table 12: Debt/ GDP Ratio (%), 2001-2011

	2001	2002	2003	2004	2005	2006	2007	2008	2009	2010	2011
Angola	103.3	83.8	67.4	48.8	34.4	24.9	11.4	19.7	27.7	21.8	15.6
Botswana	6.9	7.6	5.4	4.2	5.1	4.7	3.2	10.2	20.7	18.2	22.6
DRC	119.7	118.5	119.1	108.6	83.3	72.6	66.9	57.0	68.1	16.1	19.1
Lesotho	93.0	77.1	54.6	52.4	61.0	52.1	41.6	42.8	40.1	34.4	33.2
Madagascar	68.6	72.7	60.1	57.5	52.8	30.8	25.9	18.7	24.0	26.5	26.3
Malawi	131.7	145.6	156.7	138.4	108.9	31.3	24.7	16.5	15.9	15.2	18.6
Mauritius	21.3	19.7	16.5	14.7	14.4	10.2	10.9	7.2	10.8	11.3	12.2
Mozambique	124.2	84.0	82.8	77.1	71.5	46.2	40.5	61.4	34.1	68.1	49.4
Namibia	18.1	11.8	19.8	17.6	9.5	11.3	18.9	23.0	24.6	22.4	34.5
Seychelles	78.5	75.6	65.4	51.1	52.4	50.7	55.8	79.0	82.0	47.4	45.4
South Africa	26.2	30.5	23.4	20.5	19.7	22.7	26.4	26.6	27.6	28.7	27.3
Swaziland	32.3	24.2	19.1	16.7	16.7	15.5	17.2	16.0	15.3	13.3	9.9
Tanzania	63.4	65.2	66.6	65.9	57.8	33.6	34.7	30.9	36.8	42.5	37.6
Zambia	132.8	139.3	128.7	107.7	64.1	29.4	22.5	8.2	29.6	21.5	19.0
Zimbabwe	35.7	20.7	69.9	157.3	96.4	99.8	73.7	82.3	92.7	94.8	142.2
SADC region	40.1	38.3	32.4	27.0	22.9	18.5	25.9	26.2	29.8	28.5	27.2

Source: Figures submitted and validated by NSOs of SADC Member States

Figure 12: Trend in Debt/GDP ratio (%) for SADC region, Angola, DRC and South Africa, 2001-2011

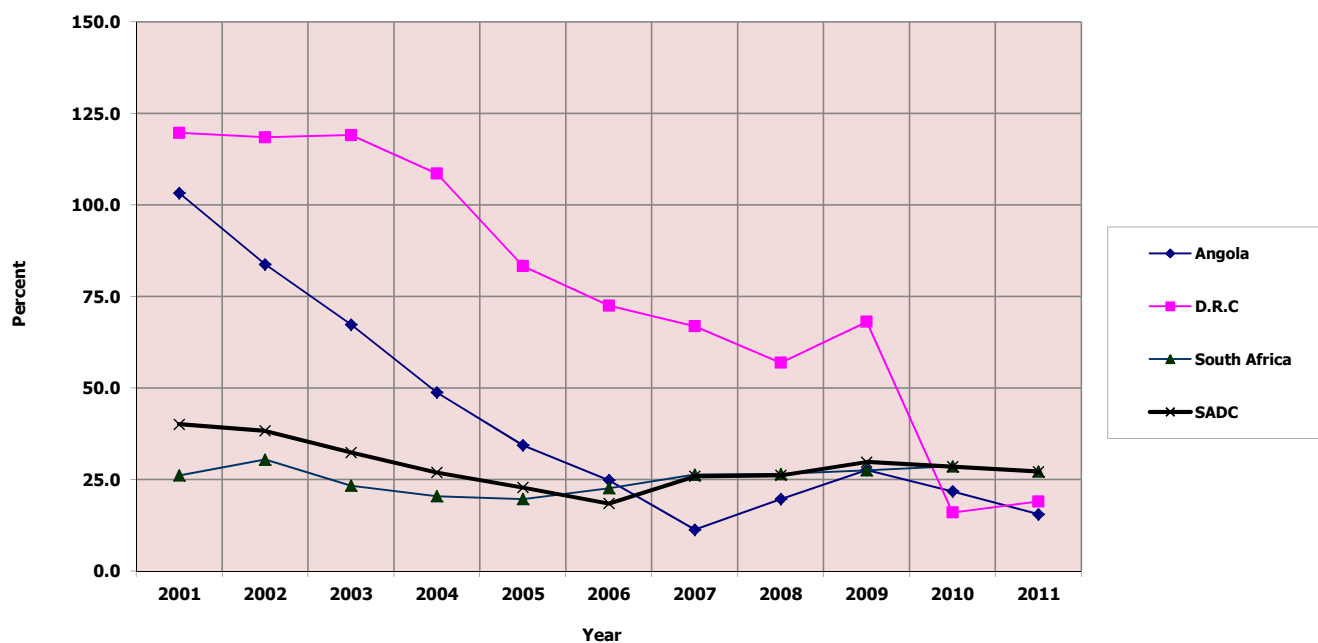


Table 13: Average Official Exchange Rates for SADC Member States, 2001-2011 (National currency per 1 US \$)

Country	Currency	2001	2002	2003	2004	2005	2006	2007	2008	2009	2010	2011
Angola	New Kwanza	22.1	43.7	74.6	85.6	87.4	80.4	76.7	75.0	79.3	92.1	95.3
Botswana	Pula	5.8	6.3	4.9	4.7	5.1	5.8	6.1	6.8	7.2	6.8	6.8
DRC	Franc	206.6	346.5	405.0	398.3	473.8	468.1	516.7	561.1	806.5	905.9	919.4
Lesotho	Maloti	8.6	10.5	7.6	6.4	6.4	6.8	7.1	8.3	8.4	7.3	7.3
Madagascar	Ariary	1318.0	1367.0	1239.0	1869.0	2003.0	2142.3	1873.9	1708.4	1957.7	2090.0	2025.1
Malawi	Mkwacha	67.3	87.3	108.6	109.4	118.4	136.0	140.0	140.5	141.3	150.5	156.5
Mauritius	Rupee	29.1	30.0	28.4	27.8	29.2	31.2	31.4	28.4	31.9	30.9	28.8
Mozambique	Meticias	20.5	23.2	23.3	22.1	22.9	25.0	25.6	24.2	26.7	33.0	29.1
Namibia	Dollar	8.6	10.5	7.6	6.4	6.6	6.9	7.2	8.4	8.4	7.6	7.2
Seychelles	Rupee	5.9	5.5	5.4	5.5	5.5	5.5	6.7	9.4	13.6	12.1	12.4
South Africa	SA Rand	8.6	10.5	7.6	6.4	6.4	6.8	7.1	8.3	8.4	7.3	7.3
Swaziland	Emalangen	8.6	10.5	7.6	6.4	6.4	6.8	7.1	8.3	8.4	7.3	7.3
Tanzania	Shillings	876.4	966.7	1038.4	1089.4	1122.7	1251.9	1232.8	1196.3	1320.3	1409.3	1573.7
Zambia	Kwacha	3610.9	4306.9	4734.4	4774.9	4463.2	3602.9	4002.5	3746.2	5045.8	4797.0	4860.5
Zimbabwe	Dollar	55.1	55.0	697.9	5068.7	11081.9	162532.5	30100000.0	230168571.5	1.0	1.0	1.0

Source: Figures submitted and validated by NSOs of SADC Member States
The Zimbabwean economy was dollarized to the US Dollar from 2009

Table 14: International Reserves (excl. Gold), 2001-2011, end of year (Million US \$)

	2001	2002	2003	2004	2005	2006	2007	2008	2009	2010	2011
Angola	732	376	634	1,374	3,197	8,599	11,191	17,499	12,621	17,327	27,684
Botswana	7,100	4,750	4,840	5,149	6,300	7,993	6,195	5,920	5,817	8,126	8,824
DRC	22	75	97	244	153	547	114	50	129	1,300	1,273
Lesotho	386	406	460	503	582	697	1,178	1,358	1,264	1,362	1,344
Madagascar	318	265	281	330	337	574	847	982	1,135	1,172	1,263
Malawi	189	184	137	129	128	144	138	158	102	279	190
Mauritius	836	1,227	1,577	1,606	1,340	1,270	1,780	1,743	2,178	2,444	2,577
Mozambique	713	802	937	1,131	1,054	1,181	1,445	1,578	1,929	2,002	2,304
Namibia	2,844	3,215	3,426	3,616	3,633	1,353	952	1,278	1,846	1,495	1,775
Seychelles	30	51	45	22	39	75	26	73	195	255	279
South Africa	7,471	7,636	7,968	14,733	20,650	25,613	32,979	34,099	39,706	43,834	48,860
Swaziland	377	236	231	227	321	387	490	488	633	614	576
Tanzania	1,173	1,562	2,018	2,307	2,049	2,137	2,724	2,873	3,553	3,948	3,761
Zambia	142	490	286	337	560	720	690	1,085	1,924	2,094	2,167
Zimbabwe	92	106	92	254	155	140	n.a	n.a	n.a	n.a	n.a

Source: Figures submitted and validated by NSOs of SADC Member States