



SADC Merchandise Trade Statistics Bulletin

April 2026

SADC Merchandise Trade statistics Bulletin

Southern African Development Community (SADC) Secretariat

Plot 54385 CBD Square

Private/Bag 0095

Gaborone, Botswana

Tel: +267 395 1863

Email: registry@sadc.int

Website: www.sadc.int

©SADC 2026

Information in this report may be reproduced, used, and shared, but with full acknowledgement.

About SADC: The Southern African Development Community is an organisation founded and maintained by countries in Southern Africa that aims to further socio-economic, political, and security cooperation among its Member States and foster regional integration, in order to achieve peace, stability, and wealth. The Member States are: Angola, Botswana, Union of the Comoros, Democratic Republic of the Congo, Eswatini, Lesotho, Madagascar, Malawi, Mauritius, Mozambique, Namibia, Seychelles, South Africa, United Republic of Tanzania, Zambia, and Zimbabwe.

Table of Contents

1.INTRODUCTION.....	6
2.HIGHLIGHTS OF TRADE STATISTICS IN SADC.....	7
2.1 Overall performance	7
2.2 Exports trends	7
2.3 Imports trends.....	7
2.4 Trade intensity	8
2.5 Trade balance.....	8
2.6 Intra-SADC Trade.....	8
2.7 Extra-SADC Trade	10
3.OVERALL MERCHANDISE TRADE.....	11
3.1 Total Exports in SADC.....	11
3.2 Total Imports in SADC	13
3.3 Total Merchandise Trade in SADC.....	15
3.4 Merchandise Trade balance	17
4.INTRA-SADC TRADE.....	18
4.1 Intra-SADC Export of Merchandise	18
4.2 Intra-SADC Import of Merchandise	20
4.3 Intra-SADC Merchandise Trade	22
4.4 Intra-SADC Merchandise Trade Balance	24
5.EXTRA-SADC TRADE	25
5.1 Extra-SADC Export of Merchandise.....	25
5.2 Extra-SADC Import of Merchandise	26
5.3 Extra-SADC Merchandise Trade	27
5.4 Extra-SADC Merchandise Trade balance.....	28
6.MERCHANDISE TRADE BY TRADING PARTNERS WITHIN SADC.....	29

List of tables

TABLE 1: TOTAL EXPORTS (FOB) OF SADC MEMBER STATES (US \$ MILLION), 2015-2024.....	11
TABLE 2: TOTAL EXPORTS (FOB) OF SADC MEMBER STATES AS A PERCENTAGE OF GDP (%), 2015-2024	12
TABLE 3: TOTAL IMPORTS (CIF) OF SADC MEMBER STATES (US \$ MILLION), 2015-2024.....	13
TABLE 4: TOTAL IMPORTS (CIF) OF SADC MEMBER STATES AS A PERCENTAGE OF GDP (%), 2015-2024.....	14
TABLE 5: TOTAL MERCHANDISE TRADE IN SADC MEMBER STATES (US \$ MILLION), 2015-2024	15
TABLE 6: TOTAL MERCHANDISE TRADE IN SADC MEMBER STATES AS A PERCENTAGE OF GDP (%), 2015-2024	16
TABLE 7: MERCHANDISE TRADE BALANCE IN SADC MEMBER STATES (US \$ MILLION), 2015-2024.....	17
TABLE 8: INTRA-SADC EXPORT (US \$ MILLION) OF MERCHANDISE, 2015-2024.....	18
TABLE 9: SHARE OF INTRA-SADC EXPORTS OF GOODS TO THE SADC TOTAL EXPORTS (%), 2015-2024	19
TABLE 10: INTRA-SADC IMPORT (US \$ MILLION) OF MERCHANDISE, 2015-2024.....	20
TABLE 11: SHARE OF INTRA-SADC IMPORTS OF GOODS TO THE SADC TOTAL IMPORTS (%), 2015-2024.....	21
TABLE 12: INTRA-SADC MERCHANDISE TRADE (US \$ MILLION), 2015-2024.....	22
TABLE 13: SHARE OF INTRA-SADC TRADE TO THE SADC TOTAL TRADE (%), 2015-2024.....	23
TABLE 14: INTRA-SADC MERCHANDISE TRADE BALANCE (US \$ MILLION), 2015-2024.....	24
TABLE 15: EXTRA-SADC EXPORT (US \$ MILLION) OF MERCHANDISE, 2015-2024	25
TABLE 16: EXTRA-SADC IMPORT (US \$ MILLION) OF MERCHANDISE, 2015-2024	26
TABLE 17: EXTRA-SADC MERCHANDISE TRADE (US \$ MILLION), 2015-2024	27
TABLE 18: EXTRA-SADC MERCHANDISE TRADE BALANCE (US \$ MILLION), 2015-2024	28
TABLE 19: ANGOLA MERCHANDISE EXPORTS (FOB) BY TRADING PARTNERS WITHIN SADC (MILLION US \$), 2015-2024.....	29
TABLE 20: ANGOLA MERCHANDISE IMPORTS (CIF) BY TRADING PARTNERS WITHIN SADC (MILLION US \$), 2015-2024	29
TABLE 21: BOTSWANA MERCHANDISE EXPORTS (FOB) BY TRADING PARTNERS WITHIN SADC (MILLION US \$), 2015-2024	30
TABLE 22: BOTSWANA MERCHANDISE IMPORTS (CIF) BY TRADING PARTNERS WITHIN SADC (MILLION US \$), 2015-2024	31
TABLE 23: COMOROS MERCHANDISE EXPORTS (FOB) BY TRADING PARTNERS WITHIN SADC (MILLION US \$), 2015-2022	32
TABLE 24: COMOROS MERCHANDISE IMPORTS (CIF) BY TRADING PARTNERS WITHIN SADC (MILLION US \$), 2015-2022	33
TABLE 25: DEMOCRATIC REPUBLIC OF CONGO MERCHANDISE EXPORTS (FOB) BY TRADING PARTNERS WITHIN SADC (MILLION US \$), 2015-2024	35
TABLE 26: DEMOCRATIC REPUBLIC OF CONGO MERCHANDISE IMPORTS (CIF) BY TRADING PARTNERS WITHIN SADC (MILLION US \$), 2015-2024	36
TABLE 27: ESWATINI MERCHANDISE EXPORTS (FOB) BY TRADING PARTNERS WITHIN SADC (MILLION US \$), 2017-2024	37
TABLE 28: ESWATINI MERCHANDISE IMPORTS (CIF) BY TRADING PARTNERS WITHIN SADC (MILLION US \$), 2017-2024	38
TABLE 29: LESOTHO MERCHANDISE EXPORTS (FOB) BY TRADING PARTNERS WITHIN SADC (MILLION US \$), 2015-2024.....	39
TABLE 30: LESOTHO MERCHANDISE IMPORTS (CIF) BY TRADING PARTNERS WITHIN SADC (MILLION US \$), 2015-2024	40
TABLE 31: MADAGASCAR MERCHANDISE EXPORTS (FOB) BY TRADING PARTNERS WITHIN SADC (MILLION US \$), 2015-2024.....	41
TABLE 32: MADAGASCAR MERCHANDISE IMPORTS (CIF) BY TRADING PARTNERS WITHIN SADC (MILLION US \$), 2015-2024	42
TABLE 33: MALAWI MERCHANDISE EXPORTS (FOB) BY TRADING PARTNERS WITHIN SADC (MILLION US \$), 2015-2024	43
TABLE 34: MALAWI MERCHANDISE IMPORTS (CIF) BY TRADING PARTNERS WITHIN SADC (MILLION US \$), 2015-2024.....	44
TABLE 35: MAURITIUS MERCHANDISE EXPORTS (FOB) BY TRADING PARTNERS WITHIN SADC (MILLION US \$), 2015-2024.....	45
TABLE 36: MAURITIUS MERCHANDISE IMPORTS (CIF) BY TRADING PARTNERS WITHIN SADC (MILLION US \$), 2015-2024	46
TABLE 37: MOZAMBIQUE MERCHANDISE EXPORTS (FOB) BY TRADING PARTNERS WITHIN SADC (MILLION US \$), 2015-2024	47
TABLE 38: MOZAMBIQUE MERCHANDISE IMPORTS (CIF) BY TRADING PARTNERS WITHIN SADC (MILLION US \$), 2015-2024	48
TABLE 39: NAMIBIA MERCHANDISE EXPORTS (FOB) BY TRADING PARTNERS WITHIN SADC (MILLION US \$), 2015-2024.....	49
TABLE 40: NAMIBIA MERCHANDISE IMPORTS (CIF) BY TRADING PARTNERS WITHIN SADC (MILLION US \$), 2015-2024	50
TABLE 41: SEYCHELLES MERCHANDISE EXPORTS (FOB) BY TRADING PARTNERS WITHIN SADC (MILLION US \$), 2015-2024	51
TABLE 42: SEYCHELLES MERCHANDISE IMPORTS (CIF) BY TRADING PARTNERS WITHIN SADC (MILLION US \$), 2015-2024	52
TABLE 43: SOUTH AFRICA MERCHANDISE EXPORTS (FOB) BY TRADING PARTNERS WITHIN SADC (MILLION US \$), 2015-2024	53
TABLE 44: SOUTH AFRICA MERCHANDISE IMPORTS (CIF) BY TRADING PARTNERS WITHIN SADC (MILLION US \$), 2015-2024.....	54
TABLE 45: TANZANIA MERCHANDISE EXPORTS (FOB) BY TRADING PARTNERS WITHIN SADC (MILLION US \$), 2015-2024	55
TABLE 46: TANZANIA MERCHANDISE IMPORTS (CIF) BY TRADING PARTNERS WITHIN SADC (MILLION US \$), 2015-2024.....	56
TABLE 47: ZAMBIA MERCHANDISE EXPORTS (FOB) BY TRADING PARTNERS WITHIN SADC (MILLION US \$), 2015-2024	57

TABLE 48: ZAMBIA MERCHANDISE IMPORTS (CIF) BY TRADING PARTNERS WITHIN SADC (MILLION US \$), 2015-2024	58
TABLE 49: ZIMBABWE MERCHANDISE EXPORTS (FOB) BY TRADING PARTNERS WITHIN SADC (MILLION US \$), 2015-2023	59
TABLE 50: ZIMBABWE MERCHANDISE IMPORTS (CIF) BY TRADING PARTNERS WITHIN SADC (MILLION US \$), 2015-2023	60

List of figures

FIGURE 1: TOTAL IMPORTS, TOTAL EXPORTS AND TOTAL TRADE (MILLION US \$), 2015-2024	7
FIGURE 2: SHARE OF INTRA-SADC IMPORTS AND EXPORTS OF GOODS AS A % OF TOTAL IMPORTS AND EXPORTS (2015-2024), %	9
FIGURE 3: SHARE OF INTRA-SADC TRADE, 2024 (%)	9

1. INTRODUCTION

This report gives an overview of merchandise trade flows of SADC Member States within the region and with the rest of the world for the period 2015 to 2024. The primary data source for this publication is the National Statistical Offices of Member States (except for Eswatini and South Africa where the data source is the Eswatini Revenue Service/ERS and the South Africa Revenue Service/SARS respectively).

Trend in trade data flows is very important to monitor regional integration in the region, in particular, the Pillar One of the SADC Vision 2050, Industrial Development and Market Integration. As embedded in the RISDP 2020-30, the region objective is to increase intra-SADC trade in goods and services to achieve the strategic objective of deepening regional market integration. Official Statistics plays a pivotal role in measuring performance in policy implementation and provide evidence-based information to policy makers. For the SADC trade liberalization policy, the merchandise trade flows within the region indicates how far the policy implementation is effective over time.

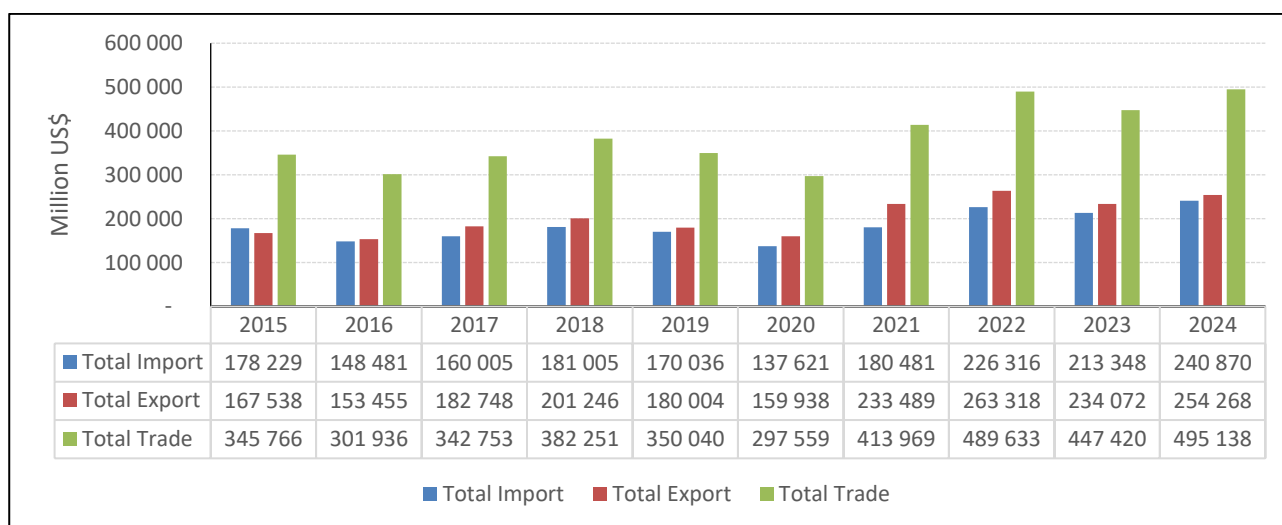
This report provides an analysis of merchandise trade trends within the Southern African Development Community (SADC) over the period 2015–2024. It focuses on key indicators including exports, imports, total trade, trade balance, and intra- versus extra-regional trade dynamics. The analysis highlights structural patterns, growth trends, and disparities among Member States, offering insights into regional integration and economic performance. Due to availability of processed data, this publication provides only the main indicators for trade. An updated version shall be available in next publication with analysis of trade flow by partner country and by products, among others.

2. HIGHLIGHTS OF TRADE STATISTICS IN SADC

2.1 Overall performance

SADC's total merchandise trade increased significantly from **US\$ 345.8 billion in 2015** to **US\$ 495.1 billion in 2024**, reflecting a long-term upward trajectory despite fluctuations. A notable **decline occurred in 2020** (US\$ 297.6 billion), likely linked to global economic disruptions. Strong recovery followed in **2021 and 2022**, with trade peaking at **US\$ 489.6 billion in 2022**. Growth continued into 2024, reaching the highest level in the period. This indicates increasing integration into global markets and resilience of the regional trade system. (Figure 1)

Figure 1: Total Imports, Total Exports and Total Trade (Million US \$), 2015-2024



2.2 Exports trends

In 2024, Total Merchandise Export of SADC stood at US\$ 254.27 Billion (against US\$ 234.07 Billion in 2023). Total exports rose **from US\$ 167.5 billion (2015) to US\$ 254.3 billion (2024)**. Exports declined sharply in 2020 (US\$ 159.9 billion), then rebounded strongly. Peak export level is recorded in 2022 (US\$ 263.3 billion). Slight dip is noticed in 2023, followed by recovery in 2024. South Africa (US\$ 120.42 Billion) has the highest Export value, followed by Angola (US\$ 39.37 Billion) and Democratic Republic of Congo (US\$ 37.81billion) (Table 1).

2.3 Imports trends

Total Merchandise Import of the region stood at US\$ 240.87 Billion (against US\$ 213.35 Billion in 2023). Imports increased from **US\$ 178.2 billion (2015) to US\$ 240.9 billion (2024)**. Similar to exports, imports dropped in 2020 (US\$ 137.6 billion). Strong rebound is observed from 2021 onwards. A significant increase is noticed in 2024, driven largely by South Africa (US\$ 129.0 billion), Tanzania (US\$ 15.7 billion), DRC (US\$ 14.4 billion), (Table 3)

2.4 Trade intensity

Total trade as % of GDP increased from **50.2% (2015)** to **58.5% (2024)**, which indicates growing openness of SADC economies. Lesotho (126.8% in 2024), Namibia (112.6%), Eswatini (96.2%) are high trade-dependent economies. Tanzania and Malawi have lower trade intensity (**Table 6**).

2.5 Trade balance

SADC recorded mixed trade balances over the period. A deficit is observed in 2015 (US\$ -10.7 billion) while surpluses are recorded between 2016–2023, with a peak in 2021 (US\$ 53.0 billion). Two Member States have persistent positive trade balance, namely Angola and the Democratic Republic of Congo. Malawi, Mauritius, Mozambique, Tanzania and Zimbabwe have persistent deficits. This highlights structural differences in production capacity and export diversification (**Table 7**).

2.6 Intra-SADC Trade

SADC Intra-Trade increased from **US\$ 75.9 billion (2015)** to **US\$ 94.6 billion (2024)**, which represents a **moderate increase**, but slower compared to total trade growth (**Table 12**).

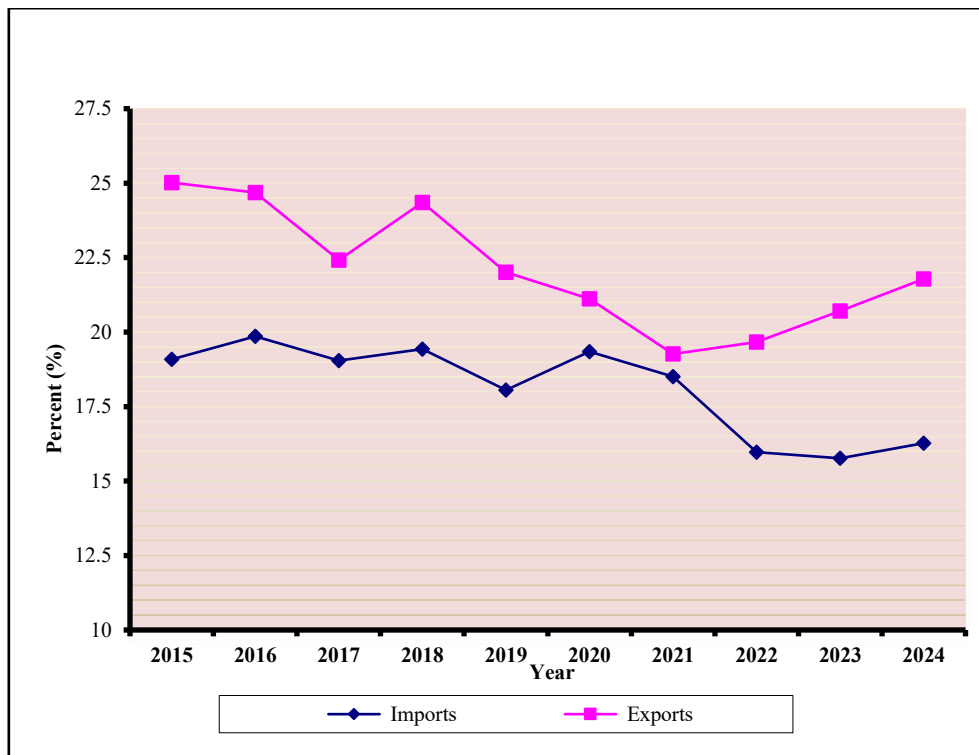
Share of Intra-SADC exports accounted for 21.8% in 2024 (against 25.0% in 2015) (**Table 9**) while the share of Intra-SADC Imports stood at 16.3% in 2024 (against 19.1% in 2015) (**Table 11**). This indicates a **declining share of intra-regional trade**, despite absolute growth.

Overall, the Intra-SADC Merchandise Export is lower than the Extra-SADC Merchandise Export, except for Eswatini. South Africa dominates intra-regional exports (US\$ 30.4 billion in 2024). Four countries are important contributors to the SADC Export, namely the Democratic Republic of Congo, Namibia, Zambia and Zimbabwe (**Table 8**).

Eswatini, Lesotho and Zimbabwe are highlight dependent on Intra-SADC trade, namely on Exports (the share of intra-SADC export stood respectively at 78.5%, 59.1% and 34% in 2024) (**Table 9**). While most of SADC Member States import mainly from countries outside SADC Region, Botswana, Eswatini, Lesotho, Namibia and at a lower extent Zambia and Zimbabwe import mainly from SADC Region. Botswana, Eswatini and Lesotho are highlight dependent on Intra-SADC Imports (the share of intra-SADC import stood respectively at 78.5%, 68.1% and 80.8% in 2024) (**Table 11**). These countries rely heavily on regional markets, reflecting **strong regional integration at smaller economy level**.

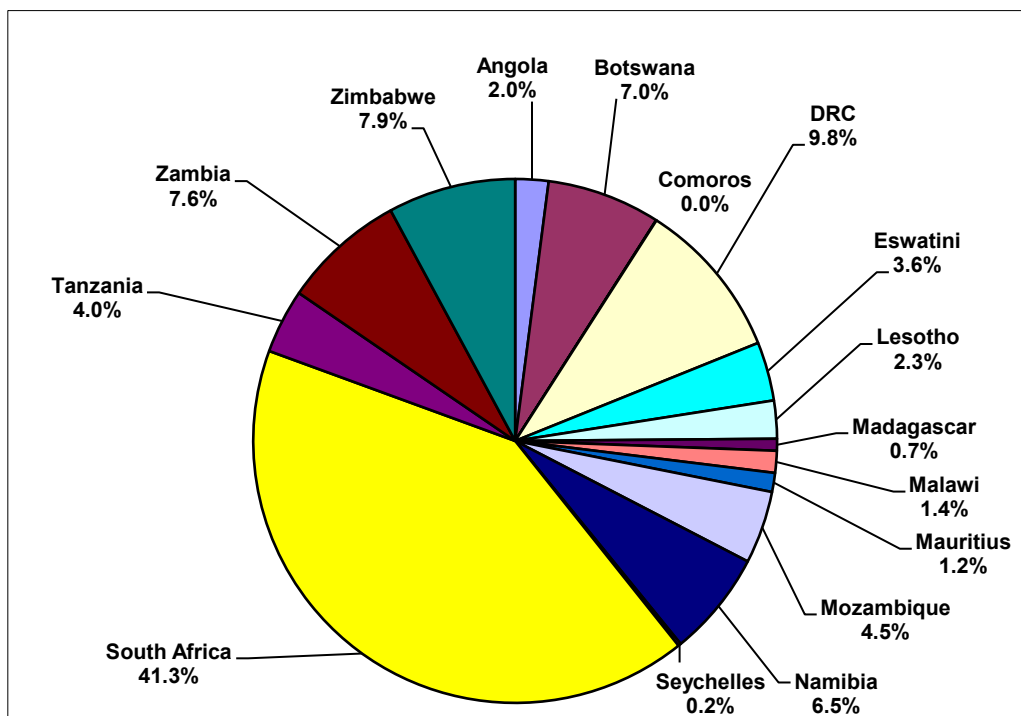
We note that the share of Intra-SADC Imports to the Total Imports and the share of Intra-SADC Exports to the Total Exports register is a slight decrease since 2020 (**Figure 2**).

Figure 2: Share of Intra-SADC Imports and Exports of Goods as a % of Total Imports and Exports (2015-2024), %



Overall, South Africa has the highest share with 41.3% share of Trade within SADC Member States. South Africa consolidated its position over the past 10 years. DRC stands at the second position while Zimbabwe, Zambia, Botswana and Namibia have close share. (Figure 3)

Figure 3: Share of Intra-SADC Trade, 2024 (%)



2.7 Extra-SADC Trade

Extra-SADC trade remains dominant. It stood at **US\$ 400.6 billion in 2024** and accounted for over **80% of total trade** . Most Member States trade primarily with global partners except Botswana, Eswatini, Lesotho, Namibia which import mainly from within SADC (**Table 17**)

3. OVERALL MERCHANDISE TRADE

3.1 Total Exports in SADC

Table 1: Total Exports (FOB) of SADC Member States (US \$ million), 2015-2024

	2015	2016	2017	2018	2019	2020	2021	2022	2023	2024
Angola	41 111	33 085	41 683	41 652	35 198	22 004	34 984	51 270	38 732	39 372
Botswana	6 269	7 390	5 987	6 562	5 253	4 286	7 458	8 282	5 851	4 671
Comoros	16	30	39	46	48	20	34	37	37	35
DRC	8 612	7 170	12 092	19 944	13 455	14 062	24 035	30 473	28 249	37 813
Eswatini	1 823	1 699	1 943	1 997	2 095	1 807	2 082	1 991	2 096	2 402
Lesotho	547	663	719	787	922	843	871	869	815	1053
Madagascar	2 137	2 258	2 922	3 131	2 698	2 029	2 730	3 657	3 344	2 673
Malawi	1 045	1 024	841	841	897	754	998	893	966	960
Mauritius	2 656	2 356	2 320	2 353	2 215	1 795	1 981	2 409	2 310	2 382
Mozambique	3 413	3 328	4 755	6 037	4 787	3 720	5 704	8 299	8 276	8 211
Namibia	4 609	4 071	4 495	6 018	5 991	5 307	6 307	5 838	5 570	6 381
Seychelles	353	414	489	674	463	400	422	496	501	557
South Africa	80 572	75 793	88 905	94 262	89 617	84 631	122 313	123 747	112 379	120 423
Tanzania	4 360	4 462	4 075	3 869	5 048	6 066	6 391	6 825	7 274	8 702
Zambia	6 607	6 372	8 000	9 034	7 047	7 821	11 141	11 646	10 448	11 198
Zimbabwe	3 408	3 340	3 482	4 038	4 269	4 395	6 036	6 585	7 225	7 434
Total SADC	167 538	153 455	182 748	201 246	180 004	159 938	233 489	263 318	234 072	254 268

Table 2: Total Exports (FOB) of SADC Member States as a percentage of GDP (%), 2015-2024

	2015	2016	2017	2018	2019	2020	2021	2022	2023	2024
Angola	31.2	28.8	29.8	36.5	37.2	33.1	41.0	35.9	33.9	33.6
Botswana	46.3	49.0	37.2	38.5	31.4	28.7	40.0	40.8	29.7	24.1
Comoros	1.6	2.9	3.6	3.7	4.0	1.6	2.6	2.9	2.5	2.2
DRC	21.4	18.6	32.2	42.7	28.7	30.1	40.7	43.3	38.6	52.7
Eswatini	46.6	45.7	43.5	43.0	45.4	43.7	43.3	42.0	45.3	49.4
Lesotho	23.2	31.4	31.1	32.2	38.5	41.1	38.8	38.0	38.9	44.2
Madagascar	18.9	19.1	22.2	22.7	19.1	15.5	19.0	23.4	21.0	15.2
Malawi	12.3	13.7	9.4	8.5	8.1	6.4	8.1	7.2	7.2	8.5
Mauritius	22.2	18.9	17.1	16.0	15.4	15.6	17.1	18.8	16.5	16.0
Mozambique	20.2	27.4	35.9	40.2	30.9	26.1	35.3	43.9	39.6	36.1
Namibia	40.3	38.0	34.9	44.0	47.8	50.1	50.9	46.4	44.9	47.7
Seychelles	24.6	26.4	29.2	37.8	24.8	28.6	28.4	24.6	22.9	25.6
South Africa	23.3	23.4	23.3	23.3	23.0	25.0	29.1	30.4	29.5	30.1
Tanzania	9.2	9.0	7.6	7.1	8.6	9.6	9.4	9.2	9.3	11.0
Zambia	31.1	30.4	31.0	34.3	30.3	43.0	50.2	39.9	37.9	44.3
Zimbabwe	17.1	16.3	15.8	16.7	16.6	16.4	22.2	20.1	20.5	17.7
Total SADC	24.3	23.7	24.5	26.3	24.6	24.8	30.0	30.7	28.7	30.1

3.2 Total Imports in SADC

Table 3: Total Imports (CIF) of SADC Member States (US \$ million), 2015-2024

	2015	2016	2017	2018	2019	2020	2021	2022	2023	2024
Angola	23 096	14 997	16 178	16 591	14 238	9 349	11 643	17 757	15 749	15 003
Botswana	7 228	6 139	5 361	6 327	6 567	6 507	8 441	8 649	6 607	7 218
Comoros	174	196	209	230	196	225	344	241	247	251
DRC	7 399	4 765	4 811	6 507	7 141	6 189	7 128	13 566	13 849	14 359
Eswatini	1 519	1 523	1 968	2 280	2 206	1 892	2 388	2 124	2 039	2 273
Lesotho	1580	1489	2092	1538	1739	1377	1698	1804	1703	1969
Madagascar	2 930	2 970	3 709	4 059	3 938	3 250	4 412	5 617	4 865	4 907
Malawi	2 264	2 304	2 521	2 975	2 937	2 825	3 244	2 991	3 142	3 187
Mauritius	4 784	4 614	5 200	5 635	5 583	4 235	5 189	6 668	6 311	6 883
Mozambique	8 334	5 206	5 741	7 730	7 699	6 514	8 758	14 671	10 098	9 213
Namibia	7 836	6 465	6 861	8 291	7 497	6 577	8 580	8 147	7 387	8 673
Seychelles	974	1 040	1 303	1 271	1 167	982	1 122	1 363	1 450	1 447
South Africa	85 306	74 658	83 147	93 071	88 077	68 226	92 022	109 357	105 364	129 040
Tanzania	10 817	9 488	7 799	8 586	8 985	8 516	10 873	15 654	15 118	15 685
Zambia	7 935	7 290	7 988	9 466	7 181	5 324	7 097	9 038	10 208	11 194
Zimbabwe	6 049	5 338	5 117	6 449	4 884	5 633	7 541	8 669	9 211	9 568
Total SADC	178 229	148 481	160 005	181 005	170 036	137 621	180 481	226 316	213 348	240 870

Table 4: Total Imports (CIF) of SADC Member States as a percentage of GDP (%), 2015-2024

	2015	2016	2017	2018	2019	2020	2021	2022	2023	2024
Angola	17.5	13.1	11.6	14.5	15.0	14.1	13.6	12.4	13.8	12.8
Botswana	53.4	40.7	33.3	37.2	39.3	43.5	45.3	42.7	33.5	37.3
Comoros	18.1	19.3	19.4	18.6	16.6	18.4	26.6	18.9	16.9	15.8
DRC	18.4	12.3	12.8	13.9	15.2	13.3	12.1	19.3	18.9	20.0
Eswatini	38.9	41.0	44.1	49.1	47.8	45.8	49.7	44.8	44.1	46.8
Lesotho	67.0	70.4	90.6	62.9	72.5	67.2	75.6	78.8	81.4	82.6
Madagascar	25.9	25.1	28.1	29.5	27.9	24.9	30.7	36.0	30.5	27.9
Malawi	26.7	30.8	28.2	30.1	26.6	24.0	26.2	24.1	23.5	28.4
Mauritius	40.0	37.0	38.3	38.4	38.7	36.9	44.9	52.0	45.1	46.3
Mozambique	49.2	42.8	43.3	51.4	49.6	45.8	54.2	77.7	48.3	40.5
Namibia	68.4	60.3	53.2	60.6	59.8	62.1	69.2	64.8	59.5	64.9
Seychelles	68.0	66.3	77.8	71.3	62.4	70.2	75.3	67.5	66.3	66.6
South Africa	24.6	23.1	21.8	23.0	22.6	20.2	21.9	26.9	27.7	32.2
Tanzania	22.8	19.1	14.6	15.7	15.3	13.4	16.0	21.1	19.3	19.8
Zambia	37.3	34.8	30.9	36.0	30.9	29.3	32.0	31.0	37.0	44.2
Zimbabwe	30.3	26.0	23.2	26.6	19.0	21.0	27.7	26.4	26.1	22.8
Total SADC	25.9	23.0	21.4	23.7	23.2	21.4	23.2	26.3	26.1	28.5

3.3 Total Merchandise Trade in SADC

Table 5: Total Merchandise Trade in SADC Member States (US \$ million), 2015-2024

	2015	2016	2017	2018	2019	2020	2021	2022	2023	2024
Angola	64 207	48 082	57 860	58 243	49 437	31 353	46 627	69 027	54 482	54 374
Botswana	13 497	13 529	11 349	12 889	11 820	10 794	15 900	16 932	12 458	11 889
Comoros	190	225	247	276	243	245	377	278	284	285
DRC	16 011	11 934	16 903	26 451	20 596	20 251	31 164	44 040	42 098	52 171
Eswatini	3 342	3 222	3 912	4 278	4 302	3 699	4 471	4 114	4 134	4 675
Lesotho	2 127	2 152	2 810	2 325	2 662	2 219	2 569	2 673	2 517	3 023
Madagascar	5 067	5 228	6 631	7 190	6 636	5 279	7 142	9 275	8 209	7 581
Malawi	3 310	3 327	3 362	3 816	3 835	3 578	4 242	3 883	4 107	4 147
Mauritius	7 441	6 970	7 520	7 988	7 798	6 030	7 170	9 076	8 621	9 265
Mozambique	11 747	8 534	10 496	13 766	12 486	10 234	14 463	22 970	18 374	17 424
Namibia	12 446	10 536	11 356	14 309	13 488	11 884	14 888	13 985	12 957	15 055
Seychelles	1 326	1 454	1 793	1 945	1 629	1 382	1 544	1 859	1 952	2 004
South Africa	165 878	150 451	172 051	187 333	177 694	152 857	214 335	233 104	217 744	249 463
Tanzania	15 177	13 950	11 874	12 455	14 034	14 582	17 264	22 479	22 391	24 387
Zambia	14 542	13 662	15 988	18 501	14 228	13 145	18 238	20 684	20 656	22 393
Zimbabwe	9 457	8 679	8 599	10 487	9 153	10 028	13 577	15 254	16 436	17 002
Total SADC	345 766	301 936	342 753	382 251	350 040	297 559	413 969	489 633	447 420	495 138

Table 6: Total Merchandise Trade in SADC Member States as a percentage of GDP (%), 2015-2024

	2015	2016	2017	2018	2019	2020	2021	2022	2023	2024
Angola	48.8	41.9	41.4	51.0	52.2	47.1	54.6	48.4	47.8	46.4
Botswana	99.8	89.7	70.5	75.7	70.7	72.2	85.3	83.5	63.2	61.4
Comoros	19.7	22.3	23.0	22.3	20.6	20.0	29.2	21.8	19.5	18.0
DRC	39.8	30.9	45.1	56.7	44.0	43.4	52.7	62.5	57.5	72.8
Eswatini	85.5	86.6	87.7	92.1	93.1	89.5	93.0	86.7	89.4	96.2
Lesotho	90.2	101.8	121.8	95.1	111.0	108.3	114.4	116.8	120.4	126.8
Madagascar	44.8	44.1	50.3	52.2	47.1	40.4	49.8	59.4	51.5	43.1
Malawi	39.0	44.5	37.6	38.6	34.7	30.4	34.3	31.2	30.7	36.9
Mauritius	62.1	55.9	55.4	54.4	54.1	52.6	62.1	70.7	61.6	62.3
Mozambique	69.4	70.2	79.2	91.6	80.5	71.9	89.5	121.6	87.8	76.6
Namibia	108.7	98.3	88.1	104.6	107.5	112.3	120.0	111.3	104.4	112.6
Seychelles	92.6	92.7	107.0	109.1	87.2	98.8	103.7	92.1	89.2	92.3
South Africa	47.9	46.5	45.1	46.3	45.7	45.2	50.9	57.3	57.2	62.3
Tanzania	31.9	28.0	22.3	22.7	23.9	23.0	25.4	30.3	28.6	30.8
Zambia	68.4	65.2	61.9	70.3	61.1	72.2	82.2	70.8	74.9	88.5
Zimbabwe	47.4	42.2	39.0	43.3	35.6	37.3	49.8	46.5	46.7	40.5
Total SADC	50.2	46.7	45.9	50.0	47.8	46.2	53.2	57.0	54.8	58.5

3.4 Merchandise Trade balance

Table 7: Merchandise Trade balance in SADC Member States (US \$ million), 2015-2024

	2015	2016	2017	2018	2019	2020	2021	2022	2023	2024
Angola	18 014	18 089	25 505	25 060	20 960	12 656	23 342	33 513	22 983	24 369
Botswana	- 959	1 252	626	235	- 1 315	- 2 221	- 983	- 367	- 756	- 2 547
Comoros	- 159	- 166	- 170	- 184	- 148	- 206	- 310	- 204	- 210	- 216
DRC	1 213	2 405	7 282	13 437	6 314	7 872	16 907	16 907	14 400	23 454
Eswatini	304	175	- 25	- 283	- 111	- 85	- 306	- 133	57	129
Lesotho	- 1 034	- 826	- 1 373	- 751	- 817	- 534	- 828	- 935	- 888	- 916
Madagascar	- 793	- 712	- 787	- 927	- 1 241	- 1 222	- 1 682	- 1 960	- 1 521	- 2 234
Malawi	- 1 219	- 1 280	- 1 680	- 2 134	- 2 040	- 2 071	- 2 246	- 2 098	- 2 176	- 2 228
Mauritius	- 2 128	- 2 258	- 2 881	- 3 283	- 3 368	- 2 441	- 3 209	- 4 259	- 4 001	- 4 502
Mozambique	- 4 921	- 1 878	- 987	- 1 693	- 2 912	- 2 794	- 3 054	- 6 372	- 1 821	- 1 001
Namibia	- 3 227	- 2 394	- 2 366	- 2 273	- 1 506	- 1 271	- 2 273	- 2 308	- 1 816	- 2 292
Seychelles	- 621	- 626	- 814	- 596	- 704	- 583	- 699	- 867	- 949	- 890
South Africa	- 4 734	1 135	5 758	1 192	1 540	16 406	30 291	14 391	7 015	- 8 617
Tanzania	- 6 457	- 5 025	- 3 724	- 4 717	- 3 937	- 2 450	- 4 482	- 8 829	- 7 844	- 6 982
Zambia	- 1 329	- 917	12	- 432	- 134	2 498	4 045	2 608	239	4
Zimbabwe	- 2 641	- 1 998	- 1 635	- 2 411	- 614	- 1 238	- 1 505	- 2 083	- 1 986	- 2 134
Total SADC	- 10 691	4 974	22 742	20 241	9 967	22 317	53 008	37 002	20 724	13 397

4. INTRA-SADC TRADE

4.1 Intra-SADC Export of Merchandise

Table 8: Intra-SADC Export (US \$ million) of Merchandise, 2015-2024

	2015	2016	2017	2018	2019	2020	2021	2022	2023	2024
Angola	2 553	1 997	1 991	1 685	575	333	1 180	915	763	1 313
Botswana	1 823	1 953	815	892	758	720	921	1 154	914	952
Comoros	4	4	3	1	6	2	4	3	3	4
DRC	6 486	5 298	7 713	13 133	6 734	4 661	6 862	8 478	5 662	7 158
Eswatini	1 368	1 327	1 589	1 610	1 648	1 368	1 684	1 640	1 693	1 885
Lesotho	169	360	394	343	358	319	406	454	445	622
Madagascar	134	157	183	190	151	93	139	174	150	136
Malawi	319	305	160	176	169	159	230	258	285	232
Mauritius	417	376	370	391	376	331	405	480	388	423
Mozambique	878	928	1 023	1 715	1 109	1 096	1 411	1 646	1 569	1 650
Namibia	2 267	1 598	1 650	1 915	1 814	1 303	1 723	2 561	2 360	2 388
Seychelles	1	1	1	1	1	1	1	1	1	1
South Africa	20 398	18 593	20 223	21 688	20 904	17 261	23 152	26 731	26 711	30 408
Tanzania	916	1 018	878	999	842	1 458	1 303	1 442	1 728	2 968
Zambia	1 556	1 317	1 337	1 692	1 579	1 557	2 019	2 703	2 942	2 707
Zimbabwe	2 627	2 652	2 641	2 584	2 599	3 122	3 542	3 135	2 864	2 530
Total SADC	41 917	37 881	40 971	49 015	39 622	33 783	44 981	51 774	48 479	55 377

Table 9: Share of Intra-SADC Exports of goods to the SADC Total Exports (%), 2015-2024

	2015	2016	2017	2018	2019	2020	2021	2022	2023	2024
Angola	6.2	6.0	4.8	4.0	1.6	1.5	3.4	1.8	2.0	3.3
Botswana	29.1	26.4	13.6	13.6	14.4	16.8	12.4	13.9	15.6	20.4
Comoros	23.8	13.3	9.1	2.2	12.0	11.7	11.4	8.8	8.7	10.5
DRC	75.3	73.9	63.8	65.8	50.0	33.1	28.5	27.8	20.0	18.9
Eswatini	75.0	78.1	81.8	80.6	78.6	75.7	80.9	82.4	80.8	78.5
Lesotho	30.8	54.3	54.9	43.6	38.8	37.9	46.6	52.2	54.7	59.1
Madagascar	6.3	7.0	6.3	6.1	5.6	4.6	5.1	4.7	4.5	5.1
Malawi	30.5	29.8	19.0	20.9	18.8	21.1	23.0	28.9	29.5	24.1
Mauritius	15.7	15.9	16.0	16.6	17.0	18.5	20.5	19.9	16.8	17.8
Mozambique	25.7	27.9	21.5	28.4	23.2	29.5	24.7	19.8	19.0	20.1
Namibia	49.2	39.3	36.7	31.8	30.3	24.5	27.3	43.9	42.4	37.4
Seychelles	0.3	0.1	0.2	0.1	0.3	0.3	0.2	0.2	0.1	0.2
South Africa	25.3	24.5	22.7	23.0	23.3	20.4	18.9	21.6	23.8	25.3
Tanzania	21.0	22.8	21.5	25.8	16.7	24.0	20.4	21.1	23.7	34.1
Zambia	23.6	20.7	16.7	18.7	22.4	19.9	18.1	23.2	28.2	24.2
Zimbabwe	77.1	79.4	75.9	64.0	60.9	71.0	58.7	47.6	39.6	34.0
Total SADC	25.0	24.7	22.4	24.4	22.0	21.1	19.3	19.7	20.7	21.8

4.2 Intra-SADC Import of Merchandise

Table 10: Intra-SADC Import (US \$ million) of Merchandise, 2015-2024

	2015	2016	2017	2018	2019	2020	2021	2022	2023	2024
Angola	1 136	789	884	702	572	450	431	642	569	623
Botswana	5 773	4 794	3 934	4 643	4 569	4 391	5 209	6 352	5 076	5 666
Comoros	16	16	13	21	16	19	21	18	19	18
DRC	1 689	985	1 120	1 639	1 581	1 256	1 345	2 840	2 372	2 138
Eswatini	1 223	1 212	1 690	1 930	1 884	1 605	2 029	1 609	1 548	1 548
Lesotho	1224	1174	1518	1208	1336	1031	1328	1489	1391	1592
Madagascar	267	272	328	470	436	348	528	569	501	558
Malawi	719	754	740	923	791	873	866	726	977	1 047
Mauritius	473	523	634	665	607	416	527	758	611	688
Mozambique	2 659	1 744	1 846	2 479	2 402	2 195	2 642	2 676	2 654	2 589
Namibia	5 565	4 556	4 391	5 615	4 970	4 328	5 461	3 338	3 051	3 761
Seychelles	121	105	92	98	93	99	139	164	144	160
South Africa	5 477	5 127	5 884	6 154	5 242	3 785	5 167	5 795	5 697	8 649
Tanzania	771	612	601	604	733	470	617	551	786	786
Zambia	3 912	4 061	4 288	4 874	3 168	2 266	3 060	4 048	3 731	4 449
Zimbabwe	2 994	2 759	2 516	3 139	2 292	3 085	4 038	4 563	4 506	4 925
Total SADC	34 018	29 483	30 478	35 166	30 692	26 616	33 407	36 137	33 633	39 197

Table 11: Share of Intra-SADC Imports of goods to the SADC Total Imports (%), 2015-2024

	2015	2016	2017	2018	2019	2020	2021	2022	2023	2024
Angola	4.9	5.3	5.5	4.2	4.0	4.8	3.7	3.6	3.6	4.2
Botswana	79.9	78.1	73.4	73.4	69.6	67.5	61.7	73.4	76.8	78.5
Comoros	8.9	8.2	6.3	9.2	8.0	8.5	6.0	7.4	7.6	7.4
DRC	22.8	20.7	23.3	25.2	22.1	20.3	18.9	20.9	17.1	14.9
Eswatini	80.5	79.6	85.9	84.7	85.4	84.8	84.9	75.8	75.9	68.1
Lesotho	77.4	78.9	72.6	78.5	76.8	74.9	78.2	82.5	81.7	80.8
Madagascar	9.1	9.2	8.8	11.6	11.1	10.7	12.0	10.1	10.3	11.4
Malawi	31.8	32.7	29.3	31.0	26.9	30.9	26.7	24.3	31.1	32.8
Mauritius	9.9	11.3	12.2	11.8	10.9	9.8	10.1	11.4	9.7	10.0
Mozambique	31.9	33.5	32.1	32.1	31.2	33.7	30.2	18.2	26.3	28.1
Namibia	71.0	70.5	64.0	67.7	66.3	65.8	63.6	41.0	41.3	43.4
Seychelles	12.4	10.1	7.0	7.7	8.0	10.0	12.4	12.0	9.9	11.1
South Africa	6.4	6.9	7.1	6.6	6.0	5.5	5.6	5.3	5.4	6.7
Tanzania	7.1	6.5	7.7	7.0	8.2	5.5	5.7	3.5	5.2	5.0
Zambia	49.3	55.7	53.7	51.5	44.1	42.6	43.1	44.8	36.5	39.7
Zimbabwe	49.5	51.7	49.2	48.7	46.9	54.8	53.5	52.6	48.9	51.5
Total SADC	19.1	19.9	19.0	19.4	18.1	19.3	18.5	16.0	15.8	16.3

4.3 Intra-SADC Merchandise Trade

Table 12: Intra-SADC Merchandise Trade (US \$ million), 2015-2024

	2015	2016	2017	2018	2019	2020	2021	2022	2023	2024
Angola	3 690	2 785	2 875	2 387	1 147	783	1 611	1 557	1 332	1 937
Botswana	7 596	6 747	4 749	5 535	5 327	5 111	6 130	7 506	5 990	6 618
Comoros	19	20	17	22	21	21	25	21	22	22
DRC	8 174	6 282	8 833	14 771	8 315	5 917	8 207	11 318	8 035	9 295
Eswatini	2 591	2 540	3 280	3 540	3 532	2 973	3 713	3 249	3 241	3 432
Lesotho	1 392	1 534	1 912	1 551	1 694	1 350	1 734	1 943	1 837	2 214
Madagascar	401	429	510	660	587	441	667	743	651	694
Malawi	1 038	1 059	899	1 100	960	1 032	1 095	984	1 262	1 278
Mauritius	890	899	1 004	1 057	982	747	932	1 237	998	1 111
Mozambique	3 538	2 672	2 868	4 194	3 512	3 290	4 053	4 322	4 223	4 239
Namibia	7 832	6 154	6 041	7 530	6 784	5 630	7 184	5 898	5 412	6 149
Seychelles	122	105	93	99	94	100	140	165	145	162
South Africa	25 875	23 720	26 107	27 841	26 146	21 045	28 320	32 525	32 408	39 057
Tanzania	1 687	1 630	1 478	1 604	1 575	1 928	1 920	1 993	2 514	3 755
Zambia	5 468	5 377	5 625	6 566	4 747	3 823	5 079	6 751	6 673	7 157
Zimbabwe	5 621	5 411	5 157	5 724	4 891	6 207	7 580	7 699	7 369	7 455
Total SADC	75 934	67 365	71 449	84 181	70 314	60 399	78 388	87 911	82 112	94 575

Table 13: Share of Intra-SADC Trade to the SADC Total Trade (%), 2015-2024

	2015	2016	2017	2018	2019	2020	2021	2022	2023	2024
Angola	5.7	5.8	5.0	4.1	2.3	2.5	3.5	2.3	2.4	3.6
Botswana	56.3	49.9	41.8	42.9	45.1	47.3	38.6	44.3	48.1	55.7
Comoros	10.1	8.9	6.7	8.0	8.7	8.7	6.5	7.6	7.8	7.7
DRC	51.1	52.6	52.3	55.8	40.4	29.2	26.3	25.7	19.1	17.8
Eswatini	77.5	78.8	83.8	82.8	82.1	80.4	83.0	79.0	78.4	73.4
Lesotho	65.4	71.3	68.0	66.7	63.6	60.8	67.5	72.7	73.0	73.3
Madagascar	7.9	8.2	7.7	9.2	8.8	8.3	9.3	8.0	7.9	9.2
Malawi	31.4	31.8	26.7	28.8	25.0	28.8	25.8	25.3	30.7	30.8
Mauritius	12.0	12.9	13.4	13.2	12.6	12.4	13.0	13.6	11.6	12.0
Mozambique	30.1	31.3	27.3	30.5	28.1	32.2	28.0	18.8	23.0	24.3
Namibia	62.9	58.4	53.2	52.6	50.3	47.4	48.3	42.2	41.8	40.8
Seychelles	9.2	7.2	5.2	5.1	5.8	7.2	9.1	8.9	7.4	8.1
South Africa	15.6	15.8	15.2	14.9	14.7	13.8	13.2	14.0	14.9	15.7
Tanzania	11.1	11.7	12.5	12.9	11.2	13.2	11.1	8.9	11.2	15.4
Zambia	37.6	39.4	35.2	35.5	33.4	29.1	27.8	32.6	32.3	32.0
Zimbabwe	59.4	62.3	60.0	54.6	53.4	61.9	55.8	50.5	44.8	43.8
Total SADC	22.0	22.3	20.8	22.0	20.1	20.3	18.9	18.0	18.4	19.1

4.4 Intra-SADC Merchandise Trade Balance

Table 14: Intra-SADC Merchandise Trade balance (US \$ million), 2015-2024

	2015	2016	2017	2018	2019	2020	2021	2022	2023	2024
Angola	1 417	1 208	1 107	982	2	- 117	748	272	194	690
Botswana	- 3 949	- 2 842	- 3 119	- 3 751	- 3 812	- 3 672	- 4 288	- 5 198	- 4 162	- 4 714
Comoros	- 12	- 12	- 10	- 20	- 10	- 17	- 17	- 15	- 16	- 15
DRC	4 797	4 313	6 592	11 494	5 153	3 405	5 517	5 638	3 290	5 020
Eswatini	145	115	- 101	- 321	- 236	- 237	- 345	30	146	337
Lesotho	- 1 055	- 815	- 1 123	- 865	- 978	- 711	- 921	- 1 035	- 946	- 970
Madagascar	- 133	- 115	- 145	- 280	- 286	- 255	- 389	- 396	- 352	- 423
Malawi	- 400	- 448	- 580	- 747	- 622	- 714	- 636	- 468	- 691	- 815
Mauritius	- 56	- 147	- 264	- 274	- 231	- 85	- 121	- 278	- 223	- 265
Mozambique	- 1 781	- 816	- 823	- 765	- 1 293	- 1 099	- 1 232	- 1 029	- 1 085	- 938
Namibia	- 3 298	- 2 957	- 2 741	- 3 700	- 3 156	- 3 025	- 3 738	- 777	- 691	- 1 373
Seychelles	- 120	- 104	- 91	- 97	- 92	- 97	- 138	- 163	- 143	- 159
South Africa	14 921	13 466	14 339	15 534	15 662	13 476	17 985	20 936	21 014	21 760
Tanzania	145	406	277	395	109	988	686	891	941	2 182
Zambia	- 2 355	- 2 744	- 2 951	- 3 182	- 1 589	- 709	- 1 041	- 1 344	- 789	- 1 742
Zimbabwe	- 367	- 107	126	- 555	307	36	- 496	- 1 428	- 1 642	- 2 395
Total SADC	7 899	8 398	10 492	13 849	8 929	7 167	11 574	15 637	14 846	16 180

5. EXTRA-SADC TRADE

5.1 Extra-SADC Export of Merchandise

Table 15: Extra-SADC Export (US \$ million) of Merchandise, 2015-2024

	2015	2016	2017	2018	2019	2020	2021	2022	2023	2024
Angola	38 557	31 089	39 692	39 967	34 624	21 671	33 805	50 355	37 969	38 058
Botswana	4 446	5 438	5 173	5 670	4 495	3 567	6 537	7 128	4 936	3 719
Comoros	12	26	35	45	42	17	30	34	34	31
DRC	2 127	1 872	4 379	6 811	6 721	9 401	17 173	21 995	22 587	30 655
Eswatini	455	372	354	388	447	439	398	351	402	517
Lesotho	378	303	324	444	564	523	465	415	369	431
Madagascar	2 003	2 101	2 739	2 941	2 547	1 936	2 591	3 484	3 194	2 538
Malawi	726	718	682	665	728	594	768	635	680	728
Mauritius	2 239	1 980	1 950	1 961	1 839	1 463	1 575	1 929	1 922	1 959
Mozambique	2 535	2 400	3 732	4 322	3 678	2 624	4 294	6 653	6 707	6 561
Namibia	2 342	2 473	2 845	4 103	4 178	4 004	4 584	3 278	3 210	3 993
Seychelles	351	413	489	674	461	398	422	495	501	556
South Africa	60 174	57 200	68 682	72 575	68 713	67 371	99 161	97 016	85 668	90 015
Tanzania	3 444	3 444	3 197	2 870	4 207	4 608	5 088	5 383	5 546	5 734
Zambia	5 050	5 056	6 663	7 342	5 468	6 264	9 122	8 943	7 506	8 491
Zimbabwe	781	689	841	1 454	1 671	1 273	2 494	3 450	4 361	4 904
Total SADC	125 621	115 574	141 777	152 231	140 382	126 155	188 508	211 544	185 593	198 890

5.2 Extra-SADC Import of Merchandise

Table 16: Extra-SADC Import (US \$ million) of Merchandise, 2015-2024

	2015	2016	2017	2018	2019	2020	2021	2022	2023	2024
Angola	21 960	14 208	15 294	15 889	13 666	8 899	11 211	17 115	15 181	14 379
Botswana	1 456	1 344	1 427	1 684	1 998	2 116	3 232	2 297	1 531	1 552
Comoros	159	180	196	209	180	206	323	223	228	232
DRC	5 710	3 780	3 690	4 868	5 561	4 934	5 784	10 726	11 477	12 221
Eswatini	296	311	278	350	322	287	360	515	491	725
Lesotho	357	315	574	330	404	346	371	315	311	377
Madagascar	2 664	2 697	3 381	3 588	3 502	2 902	3 884	5 048	4 364	4 349
Malawi	1 545	1 550	1 781	2 051	2 147	1 952	2 378	2 265	2 165	2 141
Mauritius	4 312	4 091	4 566	4 970	4 976	3 819	4 663	5 910	5 701	6 195
Mozambique	5 675	3 462	3 896	5 250	5 297	4 319	6 116	11 995	7 443	6 624
Namibia	2 271	1 910	2 470	2 676	2 527	2 249	3 119	4 809	4 335	4 912
Seychelles	853	935	1 212	1 173	1 074	884	983	1 199	1 306	1 287
South Africa	79 829	69 531	77 263	86 917	82 835	64 441	86 855	103 562	99 668	120 391
Tanzania	10 045	8 875	7 198	7 982	8 252	8 046	10 256	15 103	14 331	14 898
Zambia	4 024	3 229	3 700	4 592	4 013	3 058	4 036	4 991	6 478	6 745
Zimbabwe	3 056	2 579	2 602	3 309	2 592	2 547	3 503	4 106	4 706	4 643
Total SADC	144 211	118 998	129 527	145 839	139 344	111 005	147 074	190 179	179 715	201 673

5.3 Extra-SADC Merchandise Trade

Table 17: Extra-SADC Merchandise Trade (US \$ million), 2015-2024

	2015	2016	2017	2018	2019	2020	2021	2022	2023	2024
Angola	60 517	45 297	54 985	55 856	48 290	30 570	45 016	67 470	53 150	52 438
Botswana	5 902	6 782	6 600	7 354	6 493	5 683	9 769	9 426	6 467	5 271
Comoros	171	205	231	254	222	224	353	257	262	263
DRC	7 837	5 652	8 070	11 680	12 282	14 334	22 957	32 722	34 064	42 876
Eswatini	751	682	632	738	770	726	758	866	893	1 242
Lesotho	735	618	898	774	968	869	835	730	681	808
Madagascar	4 666	4 798	6 121	6 530	6 049	4 838	6 475	8 532	7 558	6 887
Malawi	2 271	2 268	2 463	2 716	2 875	2 546	3 146	2 899	2 845	2 869
Mauritius	6 551	6 071	6 516	6 931	6 815	5 282	6 238	7 839	7 622	8 154
Mozambique	8 210	5 862	7 628	9 572	8 974	6 944	10 410	18 648	14 151	13 185
Namibia	4 614	4 383	5 315	6 779	6 704	6 253	7 703	8 087	7 545	8 905
Seychelles	1 204	1 349	1 700	1 847	1 535	1 282	1 404	1 694	1 807	1 843
South Africa	140 003	126 731	145 945	159 492	151 548	131 812	186 015	200 578	185 336	210 406
Tanzania	13 489	12 320	10 395	10 851	12 459	12 654	15 344	20 486	19 878	20 632
Zambia	9 074	8 285	10 363	11 934	9 481	9 322	13 159	13 933	13 983	15 236
Zimbabwe	3 837	3 268	3 442	4 763	4 262	3 820	5 998	7 556	9 067	9 547
Total SADC	269 832	234 572	271 304	298 071	279 727	237 160	335 581	401 723	365 308	400 563

5.4 Extra-SADC Merchandise Trade balance

Table 18: Extra-SADC Merchandise Trade balance (US \$ million), 2015-2024

	2015	2016	2017	2018	2019	2020	2021	2022	2023	2024
Angola	16 597	16 881	24 398	24 078	20 958	12 773	22 593	33 240	22 789	23 679
Botswana	2 990	4 094	3 745	3 986	2 497	1 451	3 305	4 831	3 405	2 168
Comoros	- 147	- 154	- 161	- 163	- 138	- 189	- 293	- 189	- 195	- 201
DRC	- 3 584	- 1 908	689	1 943	1 160	4 467	11 390	11 269	11 110	18 434
Eswatini	159	61	76	38	125	152	39	- 164	- 89	- 208
Lesotho	22	- 12	- 250	114	161	177	94	100	58	54
Madagascar	- 661	- 596	- 642	- 647	- 955	- 966	- 1 292	- 1 564	- 1 169	- 1 811
Malawi	- 819	- 832	- 1 099	- 1 387	- 1 418	- 1 357	- 1 610	- 1 630	- 1 485	- 1 413
Mauritius	- 2 072	- 2 111	- 2 616	- 3 009	- 3 137	- 2 356	- 3 087	- 3 981	- 3 779	- 4 236
Mozambique	- 3 140	- 1 062	- 163	- 929	- 1 619	- 1 695	- 1 822	- 5 343	- 736	- 63
Namibia	71	563	376	1 427	1 651	1 755	1 465	- 1 531	- 1 125	- 919
Seychelles	- 501	- 522	- 723	- 499	- 612	- 485	- 561	- 705	- 805	- 731
South Africa	- 19 655	- 12 331	- 8 581	- 14 342	- 14 122	2 929	12 306	- 6 545	- 14 000	- 30 376
Tanzania	- 6 601	- 5 431	- 4 001	- 5 112	- 4 046	- 3 438	- 5 168	- 9 720	- 8 785	- 9 164
Zambia	1 027	1 827	2 963	2 750	1 455	3 206	5 086	3 952	1 028	1 746
Zimbabwe	- 2 275	- 1 891	- 1 761	- 1 856	- 921	- 1 274	- 1 009	- 656	- 344	261
Total SADC	- 18 590	- 3 424	12 250	6 392	1 038	15 150	41 434	21 364	5 878	- 2 782

6. MERCHANDISE TRADE BY TRADING PARTNERS WITHIN SADC

Table 19: **Angola** Merchandise Exports (FOB) by trading partners within SADC (Million US \$), 2015-2024

	2015	2016	2017	2018	2019	2020	2021	2022	2023	2024
Botswana	0.05	0.04	0.00	0.02	6.67	0.00	0.01	0.29	1.11	19.25
Comoros	0.00	0.00	0.24	0.00	0.00	0.00	0.00	0.00	0.00	0.00
DRC	282.78	203.04	392.38	104.82	131.76	50.68	252.89	96.91	122.73	207.31
Eswatini	0.00	0.00	0.00	1.29	0.02	0.00	0.00	0.00	0.00	0.03
Lesotho	0.00	0.00	0.00	0.00	0.00	0.00	0.00	0.00	0.00	0.00
Madagascar	0.00	0.03	0.00	0.00	0.00	0.00	0.03	0.00	0.00	0.26
Malawi	0.00	0.00	0.04	0.24	1.29	0.00	0.00	103.12	0.00	0.05
Mauritius	0.00	0.00	0.03	0.00	0.00	0.13	0.01	0.01	0.00	46.90
Mozambique	3.06	1.60	0.57	1.15	4.31	3.28	0.88	1.60	2.84	2.42
Namibia	778.48	438.66	250.40	350.08	56.13	67.85	394.82	69.82	183.58	197.21
Seychelles	0.02	1.42	0.00	93.02	0.00	0.12	0.00	0.00	0.00	0.03
South Africa	1 487.82	1 351.26	1 346.84	1 133.29	374.05	210.53	530.30	641.16	448.29	835.85
Tanzania	0.12	0.05	0.06	0.46	0.12	0.01	0.53	0.03	0.90	0.11
Zambia	0.58	0.40	0.23	0.11	0.30	0.18	0.29	0.28	0.20	3.55
Zimbabwe	0.44	0.01	0.00	0.03	0.00	0.13	0.00	1.34	3.30	0.50

Table 20: **Angola** Merchandise Imports (CIF) by trading partners within SADC (Million US \$), 2015-2024

	2015	2016	2017	2018	2019	2020	2021	2022	2023	2024
Botswana	1.03	1.90	1.14	1.40	0.37	0.18	0.45	2.44	1.46	5.17
Comoros	-	-	-	-	-	-	-	0.00	0.00	0.00
DRC	8.20	2.45	1.69	1.96	4.19	3.34	6.91	12.45	3.42	5.72
Eswatini	10.79	7.33	23.12	31.25	16.71	4.96	6.30	27.37	0.57	0.52
Lesotho	-	-	-	-	0.00	0.00	0.00	0.00	-	0.00
Madagascar	0.18	0.05	0.01	0.00	0.00	0.02	0.00	0.04	0.02	0.00
Malawi	0.01	0.01	-	0.00	0.49	0.73	0.30	0.05	0.00	0.00
Mauritius	1.54	0.53	0.70	2.22	1.83	0.80	2.69	1.47	2.02	0.27
Mozambique	5.24	3.65	6.60	5.27	4.40	4.68	1.83	4.59	3.97	31.67
Namibia	91.93	55.23	43.24	44.12	25.57	25.45	35.45	68.69	60.93	35.61
Seychelles	0.58	0.00	-	0.59	2.43	0.51	-	0.00	0.05	0.84
South Africa	1 012.70	716.22	801.03	609.57	506.21	403.57	373.14	516.68	487.83	532.28
Tanzania	0.44	0.13	0.89	1.38	1.87	3.81	1.95	2.17	0.77	1.18
Zambia	1.83	0.98	4.82	3.90	3.39	1.31	1.70	4.83	6.58	9.16
Zimbabwe	2.02	0.47	0.82	0.78	4.99	0.59	0.59	1.35	1.25	0.78

Table 21: Botswana Merchandise Exports (FOB) by trading partners within SADC (Million US \$), 2015-2024

	2015	2016	2017	2018	2019	2020	2021	2022	2023	2024
Angola	2.50	2.40	1.70	3.60	1.30	0.60	1.00	3.30	2.30	6.00
Comoros	0.00	0.00	0.00	0.00	0.00	0.00	0.00	0.00	0.00	0.10
DRC	3.50	1.90	1.60	7.80	5.80	4.90	5.20	5.20	15.00	10.10
Eswatini	1.00	1.10	0.40	0.70	0.60	0.30	0.20	0.30	0.40	0.50
Lesotho	0.20	0.30	0.30	0.40	1.10	0.20	0.10	0.50	0.80	8.40
Madagascar	0.00	0.00	0.00	0.00	0.00	0.00	0.10	0.20	0.00	0.00
Malawi	1.60	1.70	5.60	1.60	1.70	1.50	2.20	1.30	1.30	1.40
Mauritius	0.10	0.20	0.10	0.10	0.50	0.10	0.10	1.70	0.30	1.80
Mozambique	2.80	3.20	1.20	1.50	2.60	1.80	3.30	7.70	5.40	3.60
Namibia	739.10	853.80	147.90	180.30	160.80	66.30	143.60	194.00	62.60	166.10
Seychelles	0.00	0.00	3.50	5.90	0.00	0.10	0.00	0.00	0.00	0.00
South Africa	971.10	1 002.60	591.10	592.30	518.40	572.40	683.40	838.10	710.60	634.30
Tanzania	1.50	2.90	0.70	13.10	2.40	1.20	1.40	1.90	1.30	0.30
Zambia	43.50	31.40	29.60	39.50	27.80	37.00	35.70	32.70	27.60	27.60
Zimbabwe	56.20	51.00	31.20	45.50	34.60	33.10	45.00	66.90	86.80	91.60

Table 22: Botswana Merchandise Imports (CIF) by trading partners within SADC (Million US \$), 2015-2024

	2015	2016	2017	2018	2019	2020	2021	2022	2023	2024
Angola	0.10	0.10	0.10	0.10	7.30	1.10	9.10	2.60	2.80	20.10
Comoros	0.00	0.00	0.00	0.00	0.00	0.00	0.00	0.00	0.00	0.00
DRC	0.00	0.00	0.00	5.10	0.60	1.10	1.10	0.20	5.00	0.20
Eswatini	7.20	10.50	6.60	12.10	24.50	22.80	27.30	22.80	33.10	40.80
Lesotho	0.20	1.30	1.10	1.80	3.60	2.40	1.20	2.70	1.50	2.90
Madagascar	0.00	0.00	0.00	0.20	0.00	0.00	0.00	0.00	0.30	0.30
Malawi	0.90	3.80	2.00	1.40	2.30	1.30	1.60	1.10	1.00	1.20
Mauritius	3.50	2.60	1.20	19.90	5.60	2.20	1.60	1.70	3.00	6.30
Mozambique	44.60	118.60	69.50	57.50	64.50	21.80	34.20	63.40	101.10	153.00
Namibia	1 122.10	645.00	356.00	517.30	520.60	493.30	402.40	1 109.30	508.70	1 009.90
Seychelles	0.10	0.10	0.00	0.00	0.10	0.00	0.00	0.00	0.00	0.00
South Africa	4 524.20	3 964.30	3 456.80	3 979.70	3 800.90	3 793.90	4 629.40	5 056.90	4 258.50	4 272.20
Tanzania	0.30	0.20	0.20	1.40	0.80	0.40	0.30	1.00	0.30	0.60
Zambia	37.90	26.20	21.00	21.20	91.10	23.60	62.70	62.90	136.00	105.70
Zimbabwe	31.40	21.70	19.70	25.20	47.30	27.30	38.00	27.60	24.70	53.00

Table 23: Comoros Merchandise Exports (FOB) by trading partners within SADC (Million US \$), 2015-2022

	2015	2016	2017	2018	2019	2020	2021	2022
Angola								0.000
Botswana								0.000
DRC		3.352						0.000
Eswatini								0.000
Lesotho								0.000
Madagascar	0.644	1.051	2.920	0.861	4.834	1.574	1.603	2.358
Malawi	0.000	0.000	0.000	0.000	0.000	0.000	0.000	0.000
Mauritius	2.728	2.753	0.446	0.001	0.266	0.175	0.708	0.319
Mozambique	0.000	0.000	0.000	0.000	0.000	0.000	0.000	0.000
Namibia								
Seychelles	0.000	0.000	0.000	0.001	0.009	0.000	0.000	0.002
South Africa	0.238	0.060	0.002	0.090	0.053	0.000	0.331	0.095
Tanzania	0.042	0.069	0.097	0.040	0.576	0.076	7.339	1.626
Zambia	0.000	0.000	0.000	0.000	0.000	0.000	0.004	0.001
Zimbabwe	0.000	0.000	0.000	0.000	0.003	0.000	0.000	0.001

Table 24: Comoros Merchandise Imports (CIF) by trading partners within SADC (Million US \$), 2015-2022

	2015	2016	2017	2018	2019	2020	2021	2022
Angola	0.000	0.000	0.000	0.000	0.000	0.000	0.000	0.000
Botswana	0.000	0.000	0.000	0.000	0.000	0.000	0.000	0.000
DRC	0.000	0.000	0.000	0.000	0.000	0.000	0.000	0.000
Eswatini	0.014	0.018	0.003	0.000	0.150	0.195	0.093	0.088
Lesotho	0.000	0.000	0.000	0.000	0.000	0.000	0.000	0.000
Madagascar	3.145	2.506	2.028	6.220	2.843	3.048	3.631	3.554
Malawi	0.000	0.000	0.000	0.000	0.000	0.000	0.000	0.000
Mauritius	4.428	5.821	4.295	5.132	5.337	3.494	5.086	4.669
Mozambique	0.195	0.044	0.026	0.013	0.357	0.814	0.536	0.349
Namibia	0.061	0.015	0.013	0.005	0.001	0.054	0.001	0.015
Seychelles	0.000	0.000	0.000	0.000	0.024	0.000	0.031	0.011
South Africa	5.483	4.570	4.445	6.605	4.269	5.694	3.302	4.863
Tanzania	2.055	3.022	2.952	2.817	2.775	2.789	6.239	3.515
Zambia	0.014	0.036	0.000	0.000	0.000	0.000	0.000	0.000
Zimbabwe	0.000	0.000	0.000	0.000	0.000	0.000	0.000	0.000

Table 25: Democratic Republic of Congo Merchandise Exports (FOB) by trading partners within SADC (Million US \$), 2015-2024

	2015	2016	2017	2018	2019	2020	2021	2022	2023	2024
Angola	0.77	1.91	7.43	21.44	30.29	1.80	26.37	73.87	20.14	149.59
Botswana	0.01	0.01	2.04	0.25	0.24	0.73	0.14	0.06	0.26	0.10
Comoros	0.00	0.00	0.00	0.00	0.00	0.00	0.00	0.00	0.00	0.00
Eswatini	0.70	0.11	2.13	2.20	2.72	2.22	6.24	41.03	11.70	85.59
Lesotho	0.00	0.03	0.00	0.00	0.00	0.00	0.00	0.00	0.00	0.00
Madagascar	0.00	0.00	0.00	0.00	0.00	0.92	2.05	2.32	1.65	1.38
Malawi	0.19	1.06	0.05	0.24	0.28	0.11	0.00	0.10	0.01	0.03
Mauritius	1.55	1.15	1.99	1.69	0.49	0.00	0.00	0.40	4.20	57.92
Mozambique	0.58	0.05	0.55	104.86	492.32	672.92	1 122.11	2 352.06	1 588.56	1 702.96
Namibia	67.15	1.42	0.50	8.03	0.00	0.00	0.14	0.01	23.04	86.97
Seychelles	0.01	0.03	0.00	0.13	0.01	0.00	0.00	0.00	4.75	0.64
South Africa	3 765.60	3 971.66	6 601.20	10 540.08	3 606.82	1 090.29	2 098.02	3 473.44	2 433.63	2 949.57
Tanzania	2 053.35	722.61	407.19	1 319.75	1 692.81	1 652.38	2 159.41	1 452.55	1 236.89	1 696.00
Zambia	595.67	597.53	689.54	1 133.37	907.89	1 239.22	1 447.15	1 078.92	337.07	425.91
Zimbabwe	0.05	0.01	0.12	0.61	0.11	0.10	0.33	3.52	0.37	0.86

Table 26: Democratic Republic of Congo Merchandise Imports (CIF) by trading partners within SADC (Million US \$), 2015-2024

	2015	2016	2017	2018	2019	2020	2021	2022	2023	2024
Angola	44.65	62.47	39.92	27.49	34.08	12.43	29.83	72.67	77.77	88.67
Botswana	7.48	1.03	1.24	4.40	1.19	0.18	1.87	2.15	3.52	5.78
Comoros	0.00	0.06	0.00	0.00	0.00	0.00	0.00	0.01	0.01	0.00
Eswatini	2.05	3.89	5.25	13.60	12.07	19.36	12.40	80.03	55.15	43.71
Lesotho	0.08	0.06	0.15	0.17	0.11	0.14	1.01	0.49	0.08	0.13
Madagascar	0.00	0.03	0.00	0.01	0.03	0.00	0.00	0.03	0.01	0.00
Malawi	0.07	0.06	0.04	0.03	0.01	0.12	0.42	0.02	1.38	0.01
Mauritius	4.00	0.30	2.43	12.93	1.93	1.08	1.16	3.13	2.54	6.42
Mozambique	2.42	0.22	1.10	0.75	2.97	2.86	5.13	147.13	29.44	33.75
Namibia	85.62	56.55	48.73	47.42	42.46	25.04	31.56	60.24	48.82	50.65
Seychelles	0.09	0.02	0.13	0.02	0.06	0.00	0.00	0.00	0.07	0.04
South Africa	1 132.85	640.00	750.04	1 049.52	962.32	696.08	853.40	1 423.13	1 207.72	1 149.12
Tanzania	102.42	51.16	58.03	101.93	119.58	102.88	107.72	523.82	435.22	352.44
Zambia	277.81	165.55	197.75	347.65	376.93	356.65	250.73	448.29	405.60	347.81
Zimbabwe	29.27	3.18	15.57	32.91	27.05	39.08	49.61	78.74	105.07	59.08

Table 27: Eswatini Merchandise Exports (FOB) by trading partners within SADC (Million US \$), 2017-2024

	2017	2018	2019	2020	2021	2022	2023	2024
Angola	27.26	30.80	21.00	3.45	13.28	17.11	10.63	17.15
Botswana	13.10	18.15	27.45	19.70	31.50	24.78	33.87	41.36
Comoros	0.19	0.18	0.10	0.19	0.27	0.12	0.07	0.00
DRC	2.75	15.84	14.75	3.85	1.14	4.36	13.18	20.00
Lesotho	2.75	1.31	3.29	3.59	4.59	3.20	2.81	2.89
Madagascar	9.67	8.93	9.68	4.79	7.38	2.89	1.74	7.41
Malawi	10.14	3.68	3.39	1.95	3.01	4.50	4.56	4.98
Mauritius	13.38	14.14	12.95	11.03	10.65	13.73	13.18	16.15
Mozambique	149.32	131.64	100.57	74.67	70.82	78.96	82.00	89.11
Namibia	18.91	17.68	22.42	19.89	22.79	21.34	15.20	20.21
Seychelles	0.13	0.43	0.38	0.34	0.20	0.56	0.51	0.61
South Africa	1 264.46	1 284.68	1 352.28	1 156.54	1 407.96	1 373.71	1 414.91	1 536.48
Tanzania	37.37	38.52	38.94	28.10	39.77	38.44	35.55	43.24
Zambia	11.65	16.48	23.15	11.22	19.79	18.99	17.32	24.79
Zimbabwe	28.33	27.22	17.60	28.83	50.79	36.87	47.78	60.40

Table 28: Eswatini Merchandise Imports (CIF) by trading partners within SADC (Million US \$), 2017-2024

	2017	2018	2019	2020	2021	2022	2023	2024
Angola	0.00	0.00	0.00	0.00	0.00	0.00	0.00	0.00
Botswana	0.23	1.39	0.73	0.34	0.16	0.46	0.42	2.28
Comoros	0.00	0.00	0.00	0.00	0.07	0.00	0.00	0.00
DRC	0.00	0.00	0.00	0.00	0.00	0.00	0.00	0.00
Lesotho	7.91	0.68	0.69	3.73	4.69	10.91	7.30	6.31
Madagascar	0.00	0.14	0.03	0.00	0.00	0.80	0.85	0.77
Malawi	0.17	0.00	0.04	0.00	0.45	0.00	0.05	0.07
Mauritius	10.31	8.28	16.51	10.04	14.67	3.87	3.24	9.31
Mozambique	54.77	90.38	140.41	109.66	110.59	56.01	25.33	24.76
Namibia	0.53	0.05	0.09	0.08	0.33	0.40	0.56	0.41
Seychelles	0.00	0.00	0.00	0.00	0.00	0.00	0.00	0.00
South Africa	1 612.72	1 819.02	1 719.78	1 471.55	1 892.61	1 528.51	1 503.62	1 605.45
Tanzania	0.04	0.01	0.00	0.02	0.08	0.08	0.23	0.13
Zambia	2.88	1.61	1.40	1.24	1.48	1.87	0.81	0.79
Zimbabwe	0.57	8.89	4.62	8.47	3.53	6.25	5.19	6.20

Table 29: Lesotho Merchandise Exports (FOB) by trading partners within SADC (Million US \$), 2015-2024

	2015	2016	2017	2018	2019	2020	2021	2022	2023	2024
Angola	0.00	0.00	0.00	0.65	0.01	0.10	0.05	0.00	0.00	0.00
Botswana	0.32	2.07	1.70	1.92	3.32	2.27	2.42	3.00	1.73	2.95
Comoros	0.00	0.00	0.00	0.00	0.00	0.00	0.00	0.00	0.00	0.00
DRC	0.00	0.00	0.00	0.00	0.00	0.00	0.13	0.40	0.25	0.03
Eswatini	1.89	8.37	11.42	6.84	8.95	6.89	9.76	10.93	0.00	6.89
Madagascar	0.00	0.04	0.43	0.95	0.60	0.09	0.08	0.10	0.12	0.33
Malawi	0.14	0.26	0.01	0.02	0.00	0.01	0.06	0.00	0.00	0.07
Mauritius	1.06	1.03	1.58	1.14	0.57	0.24	1.22	0.16	0.00	0.03
Mozambique	0.03	0.03	0.02	0.05	0.05	0.00	0.27	0.58	1.10	0.43
Namibia	0.00	0.12	0.50	0.09	0.05	0.00	0.01	0.05	0.04	0.06
Seychelles	0.00	0.00	0.00	0.00	0.00	0.00	0.00	0.00	0.00	0.00
South Africa	164.95	346.19	377.13	330.79	343.04	308.70	391.19	437.79	441.43	611.20
Tanzania	0.19	0.55	0.15	0.47	1.33	0.58	0.56	0.34	0.34	0.22
Zambia	0.02	0.04	0.33	0.12	0.02	0.17	0.16	0.01	0.07	0.11
Zimbabwe	0.01	1.00	1.12	0.02	0.02	0.33	0.20	0.40	0.23	0.04

Table 30: Lesotho Merchandise Imports (CIF) by trading partners within SADC (Million US \$), 2015-2024

	2015	2016	2017	2018	2019	2020	2021	2022	2023	2024
Angola	0.01	0.00	0.00	0.00	0.00	0.00	0.07	0.00	0.00	0.00
Botswana	0.26	0.22	0.56	0.29	1.42	0.19	0.17	0.52	1.18	9.48
Comoros	0.00	0.00	0.00	0.00	0.00	0.00	0.01	0.00	0.15	0.00
DRC	0.02	0.02	0.00	0.00	0.00	0.00	0.00	0.02	0.00	0.00
Eswatini	1.28	2.69	0.81	0.07	2.77	2.98	3.90	2.12	9.66	3.62
Madagascar	0.00	0.00	0.04	0.00	0.76	0.00	0.00	0.01	3.13	0.00
Malawi	0.01	0.02	0.40	0.73	0.01	0.03	0.00	3.21	20.91	0.24
Mauritius	3.21	2.51	0.45	0.33	0.61	1.41	2.25	0.29	0.05	0.02
Mozambique	3.35	11.11	10.32	6.00	8.95	3.54	14.69	10.07	0.19	10.27
Namibia	0.43	0.31	0.37	0.19	2.22	0.18	0.30	0.46	0.00	0.50
Seychelles	0.00	0.00	0.00	0.00	0.00	0.00	0.00	0.00	0.01	1.58
South Africa	1194.34	1141.25	1480.98	1179.55	1302.22	1009.27	1290.44	1394.89	1356.09	1548.83
Tanzania	0.00	0.00	0.00	0.00	0.01	0.01	0.02	0.01	0.00	0.07
Zambia	16.97	12.74	14.21	15.85	9.18	10.80	9.53	8.14	0.00	10.43
Zimbabwe	3.86	3.47	9.63	4.98	7.49	2.16	6.17	69.25	0.02	7.03

Table 31: Madagascar Merchandise Exports (FOB) by trading partners within SADC (Million US \$), 2015-2024

	2015	2016	2017	2018	2019	2020	2021	2022	2023	2024
Angola	0.15		0.02	0.01	0.02	0.05	0.03	0.07	0.00	0.02
Botswana	0.06	0.00	0.00	0.27	0.02	0.01	0.00	0.01	0.03	0.04
Comoros	5.12	5.99	5.74	9.86	8.38	9.01	7.36	6.79	7.86	7.20
DRC	0.26	0.03	0.05	0.03	0.17	0.07	0.01	0.06	0.55	0.16
Eswatini	0.03	0.06	1.04	0.02	0.02	0.01				0.03
Lesotho			0.05		0.39			0.00		
Malawi		0.00	0.00	0.01	0.13	0.08	0.69	1.66	0.26	0.18
Mauritius	29.54	51.88	76.07	64.84	43.51	19.88	29.03	39.05	40.52	26.35
Mozambique	4.21	9.16	6.53	3.55	3.13	0.97	2.71	0.46	4.18	1.65
Namibia	0.00	0.01		0.00		0.00	0.00	0.00	0.03	0.24
Seychelles	4.82	7.69	4.54	5.07	4.39	1.77	2.28	3.59	2.33	1.95
South Africa	86.23	79.28	83.64	102.84	87.36	58.22	90.08	111.42	90.31	93.60
Tanzania	3.10	2.82	4.14	3.44	2.50	1.32	4.98	7.20	2.59	3.36
Zambia	0.03	0.10	0.06	0.01	0.29	0.01	0.20	0.46	0.03	0.24
Zimbabwe	0.49	0.04	0.92	0.26	0.47	1.21	1.28	2.75	1.12	0.51

Table 32: Madagascar Merchandise Imports (CIF) by trading partners within SADC (Million US \$), 2015-2024

	2015	2016	2017	2018	2019	2020	2021	2022	2023	2024
Angola			0.01		0.01		0.10		0.02	0.35
Botswana	0.00		0.01	0.00	0.00		0.01	0.00	0.00	
Comoros	0.14	0.02	0.03	0.55	0.57	2.25	3.60	0.56	2.00	0.78
DRC	0.03	0.06	0.02	0.07	0.21	0.03	0.83	1.06	0.01	0.09
Eswatini	10.11	10.48	11.27	1.95	0.89	0.73	1.35	1.76	1.80	1.56
Lesotho	0.00	0.10	0.59	0.26			0.05	0.12	0.00	0.02
Malawi	0.10	0.07	0.75		0.02	0.15	0.46	0.46	0.02	0.00
Mauritius	105.98	99.14	95.23	166.60	171.20	155.31	244.37	221.34	189.68	239.92
Mozambique	3.06	0.33	2.40	9.32	17.64	13.65	13.05	10.24	7.21	25.53
Namibia	0.00		0.12	0.00		0.00	0.07	0.00	0.02	0.02
Seychelles	4.14	10.69	18.54	6.38	22.55	9.86	16.31	5.72	7.79	5.46
South Africa	137.73	148.58	192.83	269.34	209.51	157.19	234.08	306.93	267.72	257.93
Tanzania	3.95	1.01	3.43	15.57	13.54	8.75	13.51	19.28	23.95	25.52
Zambia	0.18	0.21	0.07	0.09	0.25	0.01	0.05	0.73	1.12	1.03
Zimbabwe	1.15	1.52	2.35	0.00	0.01	0.00	0.00	0.94	0.01	0.02

Table 33: Malawi Merchandise Exports (FOB) by trading partners within SADC (Million US \$), 2015-2024

	2015	2016	2017	2018	2019	2020	2021	2022	2023	2024
Angola	0.05	-	0.14	0.01	1.65	1.13	0.41	0.05	3.95	9.64
Botswana	1.74	9.46	2.46	1.59	2.85	1.65	1.56	1.74	1.01	1.19
Comoros	-	-	-	-	0.00	-	-	-	-	-
DRC	1.57	13.69	0.52	0.22	3.69	2.62	7.35	5.29	2.38	9.74
Eswatini	0.89	0.01	0.15	0.16	0.06	0.11	1.12	0.28	0.00	0.02
Lesotho	0.00	0.04	0.00	-	0.00	0.01	-	0.33	0.09	0.02
Madagascar	0.04	0.03	0.59	0.92	0.27	0.14	1.42	1.36	0.51	0.05
Mauritius	0.68	2.32	1.27	2.14	0.17	0.26	0.14	0.38	0.68	0.07
Mozambique	98.18	80.09	18.94	14.76	16.56	14.05	19.84	18.96	27.93	31.43
Namibia	0.11	0.10	0.18	0.09	0.12	0.49	0.03	0.25	0.09	0.09
Seychelles	0.07	0.11	0.08	0.14	0.14	0.01	0.14	0.13	0.06	0.07
South Africa	78.22	85.12	61.14	82.95	59.89	47.05	65.64	59.67	51.68	61.42
Tanzania	19.72	28.97	17.31	16.03	31.20	32.89	70.58	83.39	104.76	56.30
Zambia	19.50	39.52	28.71	23.33	31.48	25.97	25.72	39.63	44.97	19.51
Zimbabwe	98.53	45.68	28.15	33.82	22.59	33.91	36.20	46.73	51.11	42.05

Table 34: Malawi Merchandise Imports (CIF) by trading partners within SADC (Million US \$), 2015-2024

	2015	2016	2017	2018	2019	2020	2021	2022	2023	2024
Angola	-	0.00	0.21	0.01	0.85	0.04	0.01	0.03	0.00	0.01
Botswana	8.43	6.87	11.35	9.21	8.27	7.73	9.16	6.45	6.04	4.80
Comoros	-	-	-	-	-	-	-	-	-	-
DRC	0.48	0.06	0.05	152.74	0.19	0.21	0.76	0.00	0.01	0.04
Eswatini	20.75	14.89	9.46	4.48	6.07	1.64	3.37	5.35	5.92	6.96
Lesotho	0.31	0.15	0.06	0.03	0.06	0.01	0.04	0.00	0.00	0.02
Madagascar	5.06	1.44	1.99	1.44	2.62	1.91	1.94	6.37	3.48	1.69
Mauritius	21.98	3.64	10.41	10.68	6.17	2.24	3.00	5.11	2.29	5.16
Mozambique	71.22	33.10	37.24	38.74	37.24	101.03	54.66	41.33	102.87	73.34
Namibia	4.49	0.71	0.78	0.95	1.11	0.61	1.22	0.75	0.75	1.48
Seychelles	0.86	0.12	0.21	0.22	0.72	-	0.24	0.44	0.30	0.02
South Africa	409.31	437.73	488.62	531.15	532.10	573.02	582.58	456.21	488.72	476.39
Tanzania	39.05	40.54	44.19	56.51	62.11	36.99	50.62	54.68	211.20	334.28
Zambia	112.30	195.44	114.67	87.97	104.97	116.74	129.57	123.56	127.70	114.13
Zimbabwe	25.01	18.90	20.75	29.36	29.33	30.93	28.57	25.55	27.49	28.29

Table 35: Mauritius Merchandise Exports (FOB) by trading partners within SADC (Million US \$), 2015-2024

	2015	2016	2017	2018	2019	2020	2021	2022	2023	2024
Angola	0.82	0.53	0.42	1.29	0.20	2.26	1.41	0.50	0.30	0.00
Botswana	0.03	0.17	0.29	0.04	0.20	0.26	0.28	1.00	0.00	0.10
Comoros										
DRC	0.00	0.00	0.00	0.00	0.00	0.00	0.00	0.00	0.10	0.00
Eswatini	0.01	0.09	7.56	6.48	7.04	5.19	4.93	3.80	2.50	3.00
Lesotho	0.02	0.05	0.01	0.00	0.25	1.31	1.46	0.30	0.00	0.00
Madagascar	159.90	159.00	136.24	121.33	131.64	106.00	130.28	170.10	136.70	179.90
Malawi	0.10	0.12	0.05	0.20	0.10	0.05	0.28	0.20	0.10	0.10
Mozambique	1.14	2.21	3.38	3.51	4.04	3.03	3.95	5.40	9.00	9.90
Namibia	0.18	0.04	0.35	0.26	1.70	0.40	0.34	2.30	1.40	2.30
Seychelles	27.07	27.54	28.73	28.85	27.59	23.70	23.77	27.80	24.70	22.00
South Africa	213.44	177.22	185.54	216.28	195.29	183.68	233.75	253.10	200.50	202.10
Tanzania	6.15	4.12	1.80	3.13	2.51	1.25	2.46	12.70	10.50	2.50
Zambia	3.79	0.80	1.67	1.55	0.74	0.34	0.02	0.40	0.50	0.20
Zimbabwe	4.54	3.82	4.13	8.54	4.35	3.76	2.38	2.10	1.70	0.80

Table 36: Mauritius Merchandise Imports (CIF) by trading partners within SADC (Million US \$), 2015-2024

	2015	2016	2017	2018	2019	2020	2021	2022	2023	2024
Angola	0.1	0.1	0.1	0.0	0.0	0.1	0.3	0.1	0.5	36.6
Botswana	1.4	0.6	0.0	0.1	0.5	0.1	0.0	0.1	0.2	1.7
Comoros										
DRC	0.0	0.0	0.0	0.0	0.0	0.0	0.0	0.1	0.0	4.0
Eswatini	10.5	9.9	10.8	12.5	12.9	1.2	0.6	1.1	1.0	7.3
Lesotho	1.4	1.8	1.3	1.5	0.5	0.2	1.3	0.3	0.0	0.1
Madagascar	44.4	51.4	72.7	52.9	42.2	23.3	28.0	41.0	43.7	32.4
Malawi	4.2	0.5	1.8	1.8	1.3	0.6	0.9	3.6	1.2	0.0
Mozambique	18.3	13.8	10.3	8.7	9.4	8.9	5.2	14.6	5.0	6.4
Namibia	1.4	2.8	1.7	2.1	1.9	1.1	0.8	1.3	1.1	1.1
Seychelles	53.3	70.2	77.9	55.0	63.1	50.3	66.0	69.2	88.0	64.9
South Africa	316.7	345.4	442.6	518.4	449.9	325.6	414.8	604.3	456.9	512.5
Tanzania	18.7	20.0	5.9	3.2	1.9	1.3	0.1	5.0	6.0	12.5
Zambia	0.0	5.9	5.9	4.1	14.3	2.8	3.7	3.3	2.3	1.5
Zimbabwe	2.2	0.6	3.3	4.9	9.0	0.5	5.1	13.6	4.5	7.0

Table 37: Mozambique Merchandise Exports (FOB) by trading partners within SADC (Million US \$), 2015-2024

	2015	2016	2017	2018	2019	2020	2021	2022	2023	2024
Angola	4.81	2.43	2.99	2.93	4.63	5.94	0.95	2.98	3.65	44.64
Botswana	0.29	28.11	11.53	3.08	20.41	4.94	6.86	40.38	51.10	19.24
Comoros			0.00	0.00	0.00	0.00	0.00	0.00		
DRC	2.87	0.00	0.00		1.24	0.43	10.96	10.08	5.08	3.75
Eswatini	1.14	4.61	1.66	30.16	17.64	10.57	24.77	64.88	19.96	19.01
Lesotho	0.29	7.39	9.18	4.12	5.73	7.87	6.89	20.94	10.85	6.22
Madagascar	14.96	0.53	1.15	3.69	3.50	1.01	0.72	1.14	0.60	3.50
Malawi	14.78	18.46	20.49	29.12	58.44	46.74	45.21	47.35	48.25	43.76
Mauritius	15.87	8.42	11.47	4.74	5.58	8.01	21.08	16.30	17.45	10.21
Namibia	69.48	0.45	0.49	17.22	1.66	1.03	0.17	0.89	0.16	0.44
Seychelles	1.19	0.03	0.00			0.00	0.00	0.00	0.01	
South Africa	607.42	754.80	884.54	1 546.60	870.47	857.11	1 016.66	1 123.42	1 156.51	1 210.03
Tanzania	62.34	8.25	10.82	24.06	11.92	6.39	4.25	5.69	1.40	2.58
Zambia	3.06	56.03	11.76	12.28	31.04	30.56	55.09	101.18	81.17	173.08
Zimbabwe	79.61	38.65	56.50	36.59	76.94	114.95	216.90	210.92	173.08	113.82

Table 38: Mozambique Merchandise Imports (CIF) by trading partners within SADC (Million US \$), 2015-2024

	2015	2016	2017	2018	2019	2020	2021	2022	2023	2024
Angola	1.04	1.04	1.85	6.66	2.60	1.23	0.38	1.04	2.16	1.55
Botswana	2.86	1.91	1.07	1.66	4.11	2.20	1.33	4.70	3.45	3.26
Comoros			0.00		0.00	0.01	0.05	0.00		
DRC	0.33	0.00	0.00		0.05	0.01	0.01	0.02	0.07	
Eswatini	50.67	47.19	43.84	126.83	60.16	49.00	57.82	61.96	72.94	60.36
Lesotho	0.02	0.16	0.24	0.22	0.74	0.19	3.92	0.27	0.20	0.53
Madagascar	0.47	0.14	2.82	2.96	10.27	0.79	10.88	0.60	0.54	0.87
Malawi	15.27	6.53	17.22	14.72	12.58	10.84	32.73	12.75	18.00	14.84
Mauritius	26.00	26.43	33.96	52.18	40.59	38.27	40.05	135.71	44.32	46.36
Namibia	48.10	35.90	53.75	54.25	74.63	38.87	53.13	47.82	53.65	43.38
Seychelles	0.21	0.09	1.27	0.23	4.76	0.05	0.29	0.47	0.36	0.16
South Africa	2 400.01	1 597.71	1 664.90	2 192.36	2 139.33	2 005.95	2 307.17	2 289.93	2 341.48	2 303.78
Tanzania	12.36	7.81	4.97	8.72	16.94	12.28	83.96	59.57	51.37	46.33
Zambia	7.76	8.50	7.84	9.34	17.05	17.51	24.60	28.41	36.15	37.70
Zimbabwe	94.35	10.57	11.94	9.09	18.59	17.75	26.14	32.26	29.44	29.40

Table 39: Namibia Merchandise Exports (FOB) by trading partners within SADC (Million US \$), 2015-2024

	2015	2016	2017	2018	2019	2020	2021	2022	2023	2024
Angola	211.94	50.91	56.27	47.37	40.73	28.74	31.25	49.99	42.53	48.66
Botswana	1 019.92	677.21	632.64	695.63	639.14	454.32	579.21	1 015.06	978.52	967.95
Comoros	0.15	0.38	1.19	0.23	0.03	0.00	0.00	0.00	0.00	0.00
DRC	128.36	81.18	115.13	156.22	195.46	154.16	218.55	328.25	199.21	212.56
Eswatini	0.56	0.67	0.84	0.24	0.12	0.05	0.45	0.06	0.10	0.08
Lesotho	0.24	0.32	0.36	0.13	1.81	0.08	0.18	0.34	0.18	0.17
Madagascar	0.00	0.00	0.00	0.00	0.00	0.00	0.00	0.00	0.00	0.00
Malawi	0.62	0.61	0.73	1.91	1.30	2.83	1.95	1.94	4.21	0.78
Mauritius	2.84	1.94	0.83	1.39	1.25	0.86	1.06	2.24	3.25	2.67
Mozambique	27.07	39.72	19.71	25.72	27.55	30.63	40.40	57.49	49.22	41.99
Seychelles	0.83	0.43	0.48	0.49	0.71	1.02	0.90	1.01	0.17	0.15
South Africa	657.06	415.47	612.57	697.75	644.90	367.80	476.31	594.19	523.42	451.97
Tanzania	4.56	2.60	0.31	3.31	0.49	0.49	2.20	1.95	3.06	5.14
Zambia	190.01	308.04	187.73	263.80	243.94	239.43	332.72	453.87	494.64	608.24
Zimbabwe	22.94	18.63	21.23	20.92	16.39	22.14	37.94	54.26	61.71	47.81

Table 40: Namibia Merchandise Imports (CIF) by trading partners within SADC (Million US \$), 2015-2024

	2015	2016	2017	2018	2019	2020	2021	2022	2023	2024
Angola	35.97	5.33	3.32	2.52	1.17	2.96	10.21	12.02	11.83	19.23
Botswana	185.35	452.06	409.55	342.24	192.65	61.89	78.95	52.77	21.26	32.21
Comoros	0.00	0.00	0.09	0.00	0.00	0.00	0.00	0.00	0.00	0.00
DRC	146.82	21.01	2.43	10.10	124.46	376.49	735.41	123.40	59.15	181.12
Eswatini	20.21	19.34	19.90	21.09	25.95	22.00	22.42	28.27	27.30	27.61
Lesotho	0.82	0.17	0.31	0.63	0.34	0.30	0.51	0.46	0.50	1.94
Madagascar	0.00	0.00	0.16	1.23	0.38	0.57	0.92	1.59	1.89	3.25
Malawi	0.06	0.12	0.21	0.13	0.12	0.42	0.08	0.07	0.19	0.12
Mauritius	3.08	2.60	8.37	5.88	6.20	2.74	5.98	7.11	5.77	5.82
Mozambique	55.97	12.78	8.51	30.20	9.51	0.87	1.46	8.05	0.32	0.35
Seychelles	0.43	1.34	0.08	0.10	0.06	0.32	0.05	0.08	0.04	0.04
South Africa	4 948.43	3 762.59	3 617.25	4 001.93	3 396.88	2 523.11	3 081.32	3 055.24	2 835.60	3 212.38
Tanzania	0.53	0.35	1.57	3.49	3.15	3.32	4.13	3.15	2.83	1.87
Zambia	163.35	276.36	317.43	1 191.06	1 205.71	1 328.61	1 501.46	38.38	81.03	271.90
Zimbabwe	4.04	1.53	2.14	4.22	3.48	4.16	18.19	6.91	3.62	3.37

Table 41: Seychelles Merchandise Exports (FOB) by trading partners within SADC (Million US \$), 2015-2024

	2015	2016	2017	2018	2019	2020	2021	2022	2023	2024
Angola	0.000	0.000	0.000	0.000	0.000	0.000	0.000	0.000	0.000	0.000
Botswana	0.000	0.000	0.000	0.000	0.000	0.000	0.000	0.000	0.000	0.000
Comoros										
DRC	0.000	0.000	0.000	0.000	0.000	0.000	0.000	0.000	0.000	0.000
Eswatini	0.000	0.000	0.000	0.000	0.000	0.000	0.000	0.001	0.000	0.000
Lesotho	0.000	0.000	0.000	0.000	0.000	0.000	0.117	0.000	0.000	0.000
Madagascar	0.741	0.021	0.000	0.000	0.096	0.087	0.005	0.003	0.057	0.002
Malawi	0.000	0.000	0.000	0.000	0.000	0.000	0.769	0.000	0.000	0.000
Mauritius	0.243	0.393	0.752	0.632	1.057	1.270	0.000	1.039	0.651	1.141
Mozambique	0.000	0.000	0.000	0.000	0.000	0.000	0.000	0.000	0.000	0.026
Namibia	0.000	0.000	0.000	0.000	0.000	0.000	0.002	0.000	0.000	0.000
South Africa	0.196	0.181	0.111	0.171	0.075	0.028	0.000	0.001	0.010	0.056
Tanzania	0.000	0.000	0.000	0.000	0.000	0.000	0.046	0.057	0.000	0.122
Zambia	0.000	0.000	0.000	0.001	0.000	0.000	0.000	0.003	0.000	0.000
Zimbabwe	0.000	0.000	0.000	0.000	0.000	0.000	0.000	0.000	0.000	0.000

Table 42: Seychelles Merchandise Imports (CIF) by trading partners within SADC (Million US \$), 2015-2024

	2015	2016	2017	2018	2019	2020	2021	2022	2023	2024
Angola	0.000	0.000	0.000	0.000	0.000	0.000	0.003	0.000	0.000	0.000
Botswana	0.000	0.001	0.029	0.003	0.001	0.000	0.002	0.005	0.007	0.024
Comoros										
DRC	0.025	0.000	0.000	0.000	0.000	0.000	0.000	0.000	0.011	0.000
Eswatini	0.311	0.089	0.144	0.599	0.010	0.440	0.000	0.091	0.510	0.505
Lesotho	0.000	0.000	0.000	0.000	0.000	0.000	3.730	0.000	0.000	0.000
Madagascar	4.419	5.843	2.311	4.026	2.063	1.817	0.136	35.596	2.286	34.054
Malawi	0.000	0.010	0.091	0.142	0.075	0.135	32.786	0.150	0.077	0.000
Mauritius	61.910	37.527	41.310	41.976	43.612	37.870	0.004	38.940	43.600	36.321
Mozambique	0.000	0.000	0.000	0.014	0.000	0.092	0.085	0.745	0.200	0.000
Namibia	0.114	0.117	0.120	0.178	0.004	0.004	90.661	0.041	0.049	0.061
South Africa	53.989	60.750	47.606	50.476	47.130	52.848	10.965	88.292	97.119	88.462
Tanzania	0.065	0.165	0.148	0.599	0.024	5.128	0.662	0.015	0.031	0.482
Zambia	0.114	0.128	0.000	0.007	0.000	0.006	0.000	0.004	0.001	0.024
Zimbabwe	0.003	0.120	0.011	0.005	0.000	0.271	0.000	0.013	0.121	0.464

Table 43: South Africa Merchandise Exports (FOB) by trading partners within SADC (Million US \$), 2015-2024

	2015	2016	2017	2018	2019	2020	2021	2022	2023	2024
Angola	674.0	561.2	581.3	486.7	460.6	345.0	333.1	437.9	382.7	398.7
Botswana	4 129.3	3 773.8	3 886.0	4 130.5	4 010.5	3 290.9	4 481.4	4 764.4	4 215.1	4 661.1
Comoros	4.5	3.8	3.9	4.1	3.8	4.0	4.1	2.9	2.8	4.2
DRC	1 017.0	787.0	883.5	1 278.6	1 031.6	769.8	1 071.1	1 443.9	1 555.1	1 468.5
Eswatini	1 253.0	1 162.7	1 294.7	1 389.8	1 341.4	1 154.4	1 514.1	1 561.1	1 576.9	1 861.9
Lesotho	1 178.7	1 150.1	1 356.5	1 330.4	1 320.7	1 055.8	1 416.5	1 462.7	1 382.9	1 579.1
Madagascar	140.7	158.1	199.5	205.3	183.4	108.9	179.3	300.5	203.9	251.3
Malawi	368.3	361.3	413.4	450.6	415.4	391.3	468.5	463.8	479.9	552.9
Mauritius	298.4	359.9	409.3	459.6	428.6	282.8	351.1	630.5	627.9	541.3
Mozambique	2 311.8	2 260.6	2 835.2	3 182.0	3 638.1	3 033.7	4 323.6	5 821.9	6 208.6	6 899.4
Namibia	4 180.7	3 563.5	3 660.6	3 648.2	3 573.0	2 700.6	3 489.3	3 513.4	3 435.1	4 174.5
Seychelles	63.0	66.9	62.6	66.8	62.0	46.4	56.8	66.8	77.3	71.8
Tanzania	523.5	442.0	451.3	441.2	475.9	331.5	436.5	539.7	591.1	597.1
Zambia	2 292.8	2 078.6	2 247.8	2 425.1	2 105.8	1 696.8	2 324.4	2 706.2	2 771.4	3 301.0
Zimbabwe	2 007.8	1 997.7	2 094.9	2 330.2	1 992.0	2 201.0	2 911.3	3 210.0	3 386.7	4 045.2

Table 44: South Africa Merchandise Imports (CIF) by trading partners within SADC (Million US \$), 2015-2024

	2015	2016	2017	2018	2019	2020	2021	2022	2023	2024
Angola	1 339.2	1 270.8	1 341.2	1 283.9	563.7	59.6	362.0	476.2	355.5	1 034.6
Botswana	427.4	426.9	427.0	491.8	450.2	404.8	566.5	686.5	519.8	606.5
Comoros	0.5	0.2	0.2	0.3	0.1	0.1	0.6	0.2	1.4	0.1
DRC	84.3	93.6	95.3	29.3	42.9	50.9	77.1	121.4	115.2	114.7
Eswatini	1 095.5	1 046.3	1 223.7	1 218.9	1 287.8	1 090.1	1 381.4	1 346.8	1 370.0	1 919.6
Lesotho	270.4	291.7	310.2	289.1	281.8	243.4	326.0	339.0	326.9	425.7
Madagascar	127.5	110.7	96.2	105.9	103.2	81.8	128.6	183.8	158.5	224.3
Malawi	55.3	54.8	57.4	58.9	54.0	45.2	56.2	45.2	41.0	49.5
Mauritius	179.5	156.9	173.5	217.7	242.7	151.9	225.6	260.1	195.6	260.7
Mozambique	814.9	689.6	895.9	982.1	917.8	653.3	783.0	949.1	1 027.4	1 365.3
Namibia	507.1	412.3	838.0	927.3	877.0	726.9	833.9	894.3	1 018.9	1 538.5
Seychelles	0.8	1.8	1.6	8.2	5.1	3.1	2.7	0.6	0.5	4.9
Tanzania	29.5	24.1	33.9	36.2	28.3	27.5	30.4	48.9	75.4	67.2
Zambia	200.4	185.0	222.5	267.8	214.2	137.1	225.1	237.5	263.6	319.7
Zimbabwe	340.9	387.1	170.5	271.8	175.6	111.9	174.4	221.6	247.7	383.9

Table 45: Tanzania Merchandise Exports (FOB) by trading partners within SADC (Million US \$), 2015-2024

	2015	2016	2017	2018	2019	2020	2021	2022	2023	2024
Angola	3.55	17.73	11.23	2.71	3.65	0.43	4.14	2.92	2.66	4.41
Botswana	0.11	0.03	1.34	2.63	0.65	0.01	0.49	0.78	0.38	0.80
Comoros								25.10	54.66	31.16
DRC	150.72	146.20	144.42	148.03	164.08	144.21	207.23	280.54	312.81	313.31
Eswatini	8.51	0.11	0.56	2.04	5.90	0.06	0.15	0.25	0.41	0.14
Lesotho	0.00	0.00	0.00	0.00	0.00	0.00	0.03	0.00	0.13	0.05
Madagascar	3.02	5.02	5.18	6.82	5.79	2.27	2.38	5.58	7.56	12.02
Malawi	52.22	38.26	46.58	51.57	57.38	47.05	64.05	60.74	64.66	77.68
Mauritius	1.18	1.64	2.52	2.76	1.43	1.05	0.18	4.37	3.89	0.91
Mozambique	11.29	23.58	15.83	9.67	32.64	21.02	15.48	35.19	17.71	37.02
Namibia	0.57	0.63	0.22	2.67	0.82	0.33	2.13	0.72	1.57	0.57
Seychelles	13.11	0.40	0.22	0.01	0.01	0.26	0.33	0.53	0.13	0.28
South Africa	628.38	648.01	706.27	750.73	971.64	1 161.62	916.67	929.58	1 123.46	2 292.71
Zambia	37.72	45.55	64.84	66.35	63.59	54.12	68.61	80.00	98.61	162.63
Zimbabwe	5.60	7.76	9.24	9.32	18.75	21.11	14.86	15.47	38.89	34.65

Table 46: Tanzania Merchandise Imports (CIF) by trading partners within SADC (Million US \$), 2015-2024

	2015	2016	2017	2018	2019	2020	2021	2022	2023	2024
Angola	0.02	0.03	0.01	0.21	0.01	0.46	0.32	0.01	0.01	0.03
Botswana	0.12	0.30	0.40	0.27	0.13	1.53	0.46	0.40	0.32	0.29
Comoros								0.02	0.00	0.02
DRC	0.59	0.36	1.13	0.53	1.28	2.14	2.59	1.08	2.91	6.75
Eswatini	34.90	41.01	32.86	37.58	48.74	26.35	39.58	0.42	37.75	42.92
Lesotho	0.48	0.46	0.29	0.65	1.24	0.67	0.50	14.77	0.31	0.33
Madagascar	1.45	5.59	8.94	11.98	8.28	2.53	7.63	26.03	4.44	5.34
Malawi	12.71	26.41	16.59	17.23	23.95	22.44	22.47	13.47	25.03	20.47
Mauritius	23.22	15.13	16.12	6.84	8.39	5.55	20.32	22.63	25.08	8.94
Mozambique	31.11	10.93	7.79	21.59	8.36	2.39	4.59	6.65	3.40	3.73
Namibia	4.55	6.05	5.94	7.07	6.49	4.59	5.62	0.05	6.90	3.05
Seychelles	0.05	0.06	2.38	1.88	0.04	0.00	0.00	322.98	1.58	0.16
South Africa	480.49	476.77	1 059.87	449.03	498.24	420.13	432.13	43.75	555.51	531.36
Zambia	30.47	33.35	42.04	47.79	47.29	51.15	70.46	90.98	113.06	149.93
Zimbabwe	5.37	2.07	0.78	1.15	0.98	4.66	9.91	8.10	9.80	13.04

Table 47: Zambia Merchandise Exports (FOB) by trading partners within SADC (Million US \$), 2015-2024

	2015	2016	2017	2018	2019	2020	2021	2022	2023	2024
Angola	3.56	0.76	2.13	4.63	3.13	1.69	2.90	6.83	14.57	14.95
Botswana	30.38	22.28	25.48	31.36	31.06	23.63	53.99	57.02	164.45	119.75
Comoros	0.00	0.00	0.00	0.00	0.00	0.00	0.00			0.00
DRC	526.01	428.57	544.09	863.74	911.53	976.52	1 119.98	1 594.71	1 619.64	1 200.16
Eswatini	8.04	6.97	4.11	5.35	0.96	2.12	2.74	3.08	0.76	0.69
Lesotho	2.27	4.48	1.38	0.62	1.13	2.40	0.71	2.43	6.94	3.40
Madagascar	0.04	0.21	0.10	0.31	0.26	2.81	0.22	0.90	1.23	0.49
Malawi	107.71	122.52	99.36	84.80	103.91	104.72	122.26	120.73	135.80	138.43
Mauritius	9.03	7.76	1.11	2.37	10.36	1.73	24.03	26.00	21.10	21.20
Mozambique	20.09	20.16	17.67	12.59	17.91	17.93	28.21	31.50	32.93	37.38
Namibia	34.60	24.72	25.76	34.53	42.21	65.07	91.97	141.51	137.41	138.46
Seychelles	0.01	0.00	0.02	0.00	0.00	0.00	0.09	0.25	0.00	0.74
South Africa	500.34	364.93	391.71	435.78	295.91	198.79	285.27	268.52	385.39	470.54
Tanzania	45.60	86.02	89.87	79.76	61.10	58.76	89.03	182.19	133.35	189.37
Zimbabwe	268.39	227.23	133.96	136.20	99.72	101.10	197.32	267.72	288.38	371.88

Table 48: Zambia Merchandise Imports (CIF) by trading partners within SADC (Million US \$), 2015-2024

	2015	2016	2017	2018	2019	2020	2021	2022	2023	2024
Angola	0.39	1.48	0.27	0.09	0.23	0.22	3.07	0.20	0.14	0.46
Botswana	17.13	15.83	17.91	23.57	17.22	17.76	20.95	65.11	23.46	20.86
Comoros	0.00	0.00	0.00	0.00	0.00	0.00	0.00			0.00
DRC	415.97	738.21	1 012.48	1 393.73	232.06	74.46	319.63	654.42	174.98	315.74
Eswatini	18.58	11.16	17.09	13.89	19.29	13.66	21.72	21.49	24.10	29.13
Lesotho	0.06	0.03	0.17	0.27	0.02	0.09	0.30	0.10	0.14	0.17
Madagascar	0.03	0.03	0.32	0.01	0.14	0.08	0.00	0.40	0.48	0.67
Malawi	17.55	18.33	14.93	13.33	21.18	15.07	18.34	35.43	30.12	16.31
Mauritius	479.08	344.47	217.46	206.01	200.25	109.71	114.19	206.09	195.08	155.29
Mozambique	99.23	176.67	180.50	135.65	82.32	48.61	59.55	48.41	120.43	227.90
Namibia	102.54	94.34	125.96	104.06	105.57	85.75	129.44	144.90	178.29	188.28
Seychelles	1.27	0.97	0.21	0.41	0.54	0.05	0.14	0.07	0.03	7.15
South Africa	2 613.00	2 420.83	2 461.05	2 728.43	2 223.16	1 763.99	2 235.51	2 718.17	2 600.62	2 877.33
Tanzania	56.41	162.55	165.22	180.75	204.42	73.72	55.92	62.28	282.52	487.89
Zimbabwe	90.27	75.88	74.48	74.17	61.83	62.38	81.40	90.53	100.53	122.09

Table 49: Zimbabwe Merchandise Exports (FOB) by trading partners within SADC (Million US \$), 2015-2023

	2015	2016	2017	2018	2019	2020	2021	2022	2023
Angola	0.01	0.00	0.00	0.00	0.03	0.13	0.11	3.80	0.11
Botswana	30.80	29.07	19.52	31.03	43.38	39.72	36.08	37.06	26.95
Comoros	0.00	0.00	0.00	0.00	0.00	0.00	0.00	0.00	0.00
DRC	3.69	0.06	0.00	1.42	0.71	0.00	0.00	12.65	26.54
Eswatini	1.03	0.15	0.36	0.04	27.31	1.56	0.01	0.08	0.02
Lesotho	0.00	0.00	0.00	0.00	0.00	0.00	0.00	0.00	0.00
Madagascar	0.13	0.13	0.25	0.00	0.01	0.00	0.00	0.35	0.00
Malawi	3.46	4.24	5.47	6.34	5.30	3.32	4.16	6.00	6.84
Mauritius	0.04	0.13	0.19	0.02	0.05	0.11	0.02	7.60	0.72
Mozambique	408.89	268.25	365.32	392.20	354.34	407.52	508.64	190.35	397.70
Namibia	13.74	7.35	9.55	7.66	13.14	5.77	3.96	26.28	20.94
Seychelles	0.00	0.00	0.00	0.00	0.00	0.01	0.05	0.08	0.08
South Africa	2 072.92	2 270.22	2 181.52	2 078.85	2 094.15	2 608.22	2 921.08	2 755.68	2 233.39
Tanzania	0.77	0.26	0.13	0.09	0.31	2.86	7.70	5.54	8.02
Zambia	91.55	71.85	59.13	66.58	60.03	52.56	60.11	90.01	142.32

Table 50: Zimbabwe Merchandise Imports (CIF) by trading partners within SADC (Million US \$), 2015-2023

	2015	2016	2017	2018	2019	2020	2021	2022	2023
Angola	0.04	0.05	0.28	0.17	0.04	0.00	0.00	0.02	1.19
Botswana	54.98	39.62	31.62	50.19	34.42	30.66	42.14	42.01	45.07
Comoros	0.00	0.00	0.00	0.00	0.00	0.00	0.00	0.00	0.00
DRC	0.07	0.01	0.45	0.13	0.42	1.70	0.74	2.03	0.80
Eswatini	36.32	38.96	21.18	30.82	16.98	14.36	15.14	34.64	39.18
Lesotho	0.35	1.01	1.13	0.09	0.28	0.37	0.09	0.08	0.26
Madagascar	0.21	0.03	0.42	0.08	0.30	1.15	1.55	0.64	0.63
Malawi	44.36	43.21	31.60	33.35	19.53	36.02	34.04	38.68	49.22
Mauritius	50.76	79.05	106.36	201.22	132.97	164.16	217.98	315.03	268.65
Mozambique	171.92	166.06	116.31	124.53	91.48	148.24	254.56	334.15	285.96
Namibia	19.51	18.29	21.91	18.23	10.75	11.11	20.32	29.06	29.07
Seychelles	0.28	0.06	0.07	0.12	2.22	7.50	21.49	7.70	12.23
South Africa	2 326.09	2 180.80	2 049.75	2 497.61	1 870.88	2 533.59	3 210.69	3 479.53	3 495.54
Tanzania	11.39	9.38	8.65	5.95	14.88	23.75	14.65	13.25	32.20
Zambia	277.47	182.62	126.03	176.82	96.71	112.74	204.51	266.29	245.76

