



## SADC-CLIMATE SERVICES CENTRE TROPICAL CYCLONE ADVISORY

ISSUE NUMBER: 04 OF 2020/21

RELEASE DATE: 21/01/2021

RAINFALL SEASON: 2020/21

### HIGHLIGHTS

**Headline:** Tropical storm **ELOISE** is evolving over the Mozambique Channel and is moving southwest towards and it is likely to make landfall near Beira over Mozambique, on the 23 January 2021.

Analysis of model outputs from the European Centre for Medium Range Weather Forecasting (ECMWF), Joint Typhoon Warning Center (JTWC), Regional Specialized Meteorological Centre (RSMC) La Reunion and the SADC Climate Services Centre WRF-GFS, indicate that tropical storm **ELOISE** currently has a central pressure of 992hPa and a maximum average wind speed of 74km/h near its centre. It is moving general southwest at about 22 km/h. There is a likelihood that ELOISE will make landfall near Beira over Mozambique on 23 January 2021.

### WARNING ZONE

The forecast track indicate that tropical storm ELOISE is expected to affect Mozambique, Zimbabwe, South Africa and Botswana.

Other parts of SADC region that may experience increased rainfall due to other weather systems during the same period include parts of Angola, DRC, Malawi, United Republic of Tanzania and Zambia, as shown in Figure 1.

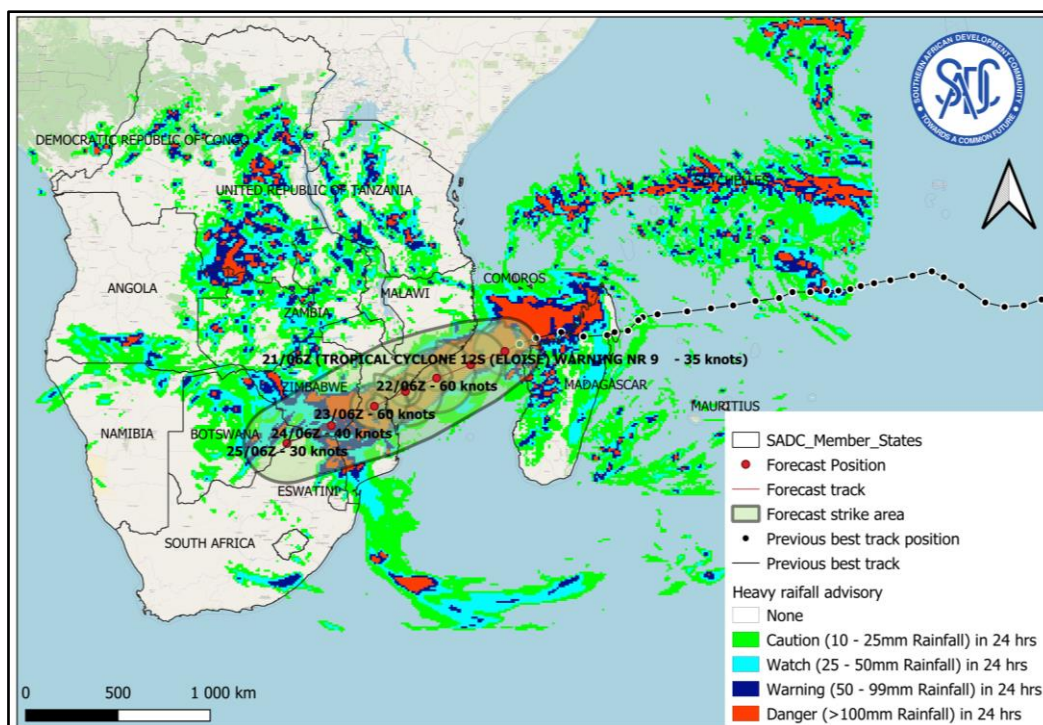


Figure 1: Heavy rainfall expected over the SADC region due to tropical storm ELOISE and other weather systems during the period of 21 to 28 January 2021 (Source: SADC-CSC WRF-GFS Model and JTWC (tracks))

## RECOMMENDED ACTION

National Meteorological and Hydrological Services are requested to closely monitor these events and update relevant institutions such as Disaster Risk Management Agencies at Member States level to support preparedness and response measures to protect lives and property.

*Users are encouraged to consult National Meteorological and Hydrological Services at Member States for interpretation of this advisory.*

## NEXT ADVICE

The next advisory will be issued when there is need to update information on the current evolving tropical system over the Mozambique Channel, which will have a direct impact on the SADC Region.


**For more information contact:**

SADC Climate Services Centre (SADC-CSC)

Private Bag 0095, Gaborone, Botswana

Email: [csc1@sadc.int](mailto:csc1@sadc.int)

Website: [csc.sadc.int](http://csc.sadc.int)

 <https://twitter.com/sadccsc>