

Zimbabwe Vulnerability Assessment Committee (ZimVac) Rural Livelihoods Assessment

May 2010
Assessment Report

A Presentation to the RVAC Dissemination Meeting
15 July 2010



ZimVAC is Co-ordinated by the Scientific Industrial Research and Development Centre (SIRDC) – Food and Nutrition Council (FNC),
1574 Alpes Road , Hatcliffe , Harare Telephone 263-4-860320/9



The following ZimVac Members Contributed Technically, Financially and Materially to this Assessment

- Food And Nutrition Council
- Scientific Industrial Research and Development Centre
- Zimbabwe National Statistics Agency
- Ministry of Agriculture, Mechanisation and Irrigation Development
- Ministry of Labour and Social Services
- Ministry of Women Affairs ,Gender and Community Development
- Ministry of Health and Child Welfare
- Ministry of Local Government, Rural and Urban Development
- Ministry of Education, Arts, Sports and Culture
- United Nations Office for the Coordination Of Humanitarian Affairs
- World Food Programme
- Food and Agriculture Organization
- Famine Early Warning Systems Network
- United States Agency for International Development
- Save the Children
- DFID - GRM



Assessment Purpose and Objectives



ZIMBABWE
Vulnerability
Assessment Committee

Purpose

- To provide strategic information for rural livelihoods revival and development
- To identify constraints to improved rural livelihoods and present opportunities for improving the livelihoods in a sustainable manner

Specific Objectives

- To determine the rural population that is likely to be food insecure in the 2010/11 consumption year, their geographic distribution and the severity of their food insecurity.
- To describe the socio-economic profiles of the people likely to be food insecure in the 2010/11 consumption year in terms of such characteristics as their household incomes and expenditure patterns, food consumption patterns and coping strategies

Specific Objectives

- To assess the functioning of rural markets for agricultural produce and inputs, basic health products, casual labour, basic food stuffs and basic non-food household consumer goods
- To record community access to basic health services, where access incorporates both availability and affordability, and their perception of priority needs for improved health.

Specific Objectives

- To record access to clean water, safe sanitation and basic hygienic practices.
- To assess access to education by rural households and identify challenges to optimum access of the service.
- To identify transitional development priorities for rural communities in all rural provinces of the country.

Assessment Methodology

Multi-dimensional

The Assessment Methodology

- Relevant Secondary Data Review and Analysis was conducted
- Primary Data was collected from
 - All Eight rural provinces, and
 - All 60 rural districts
- Primary Data was Collected Using
 - Household Interviews: 157 households were interviewed
 - Community Focus Group Interviews : 275 Group Interviews were conducted
 - District level food security focus group discussions were done in All 60 rural districts.
 - Key Informant Interviews on Education(224) and Health(265)
- Data was captured using the Census and Surveys Processing System (CSPro)
- SPSS was used as the primary analysis software and it was
- Complemented by MS Excel, Arc GIS

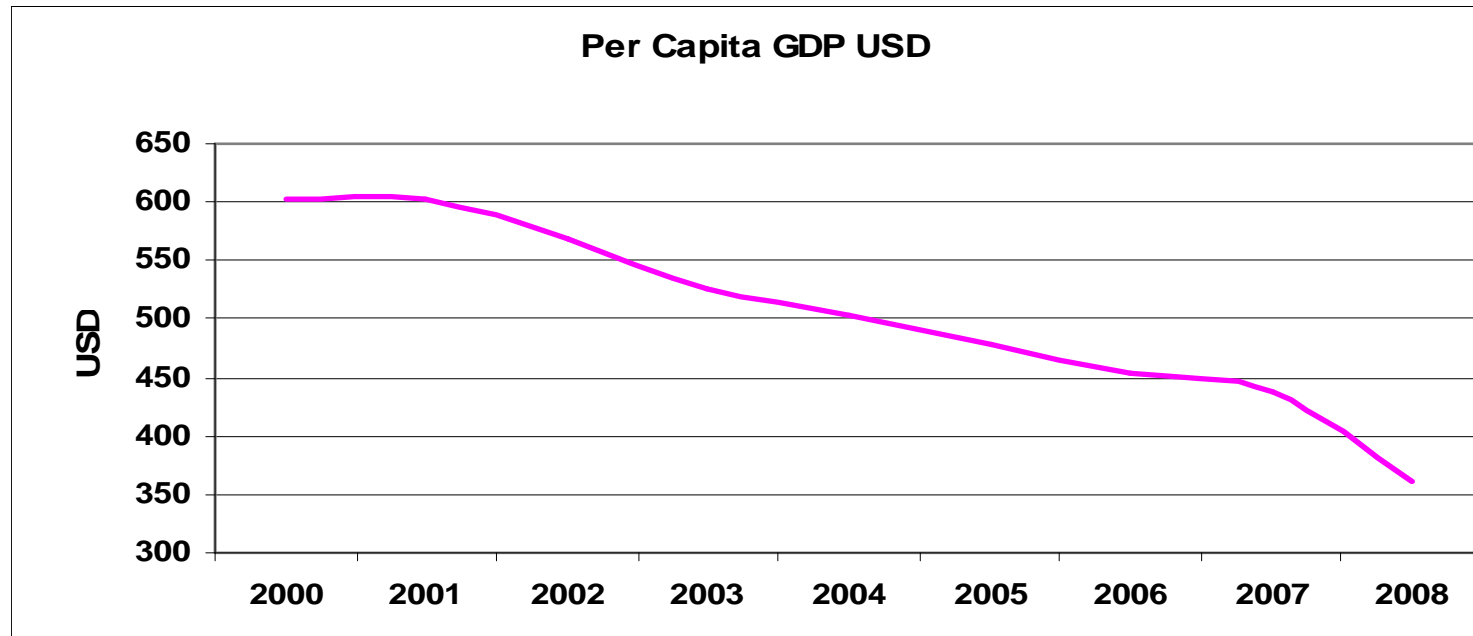


National Overview



ZIMBABWE
Vulnerability
Assessment Committee

The economy shrunk over the period 2000 - 2008



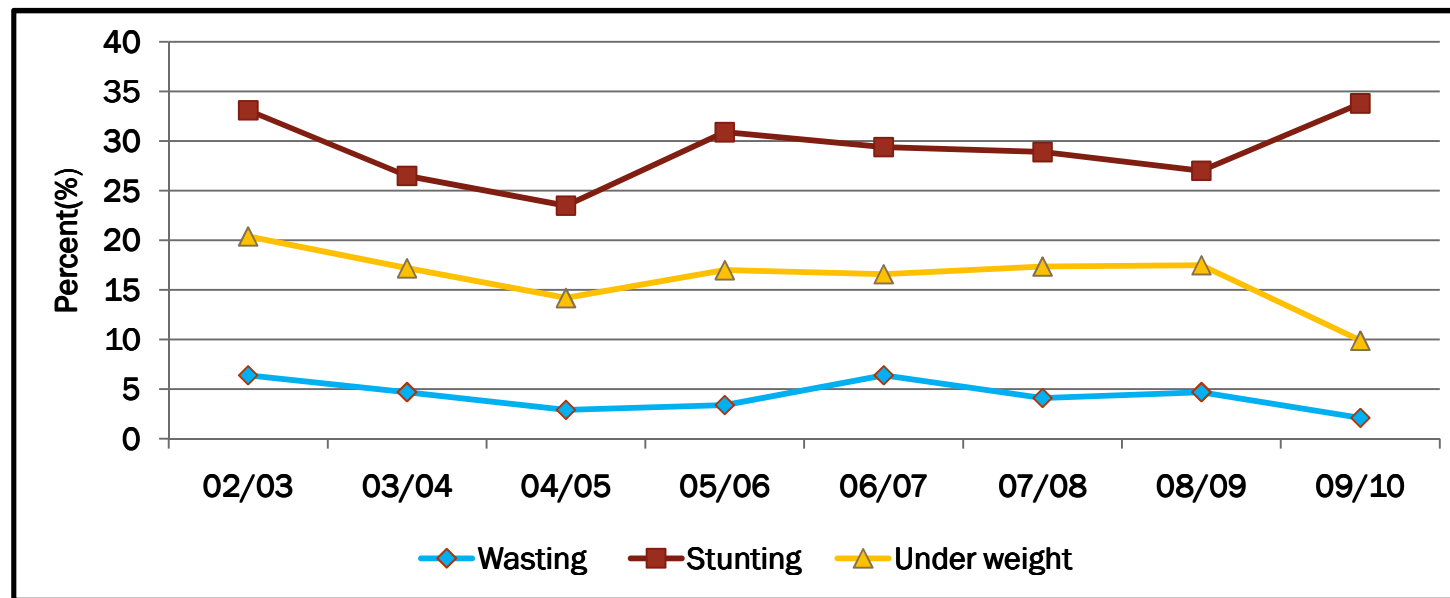
- A cumulative 40% decline over the period 2000 and 2008
- High levels of inflation grew to hyper-inflation over this period
- Critical shortages of major economic inputs(i.e. fuel, foreign currency, electricity) characterised this period.
- Formal employment dropped drastically and many able-bodied people were pushed into the informal sector and to migrate but most of these remain under-employed.

The Advent of the Unity Government Saw...

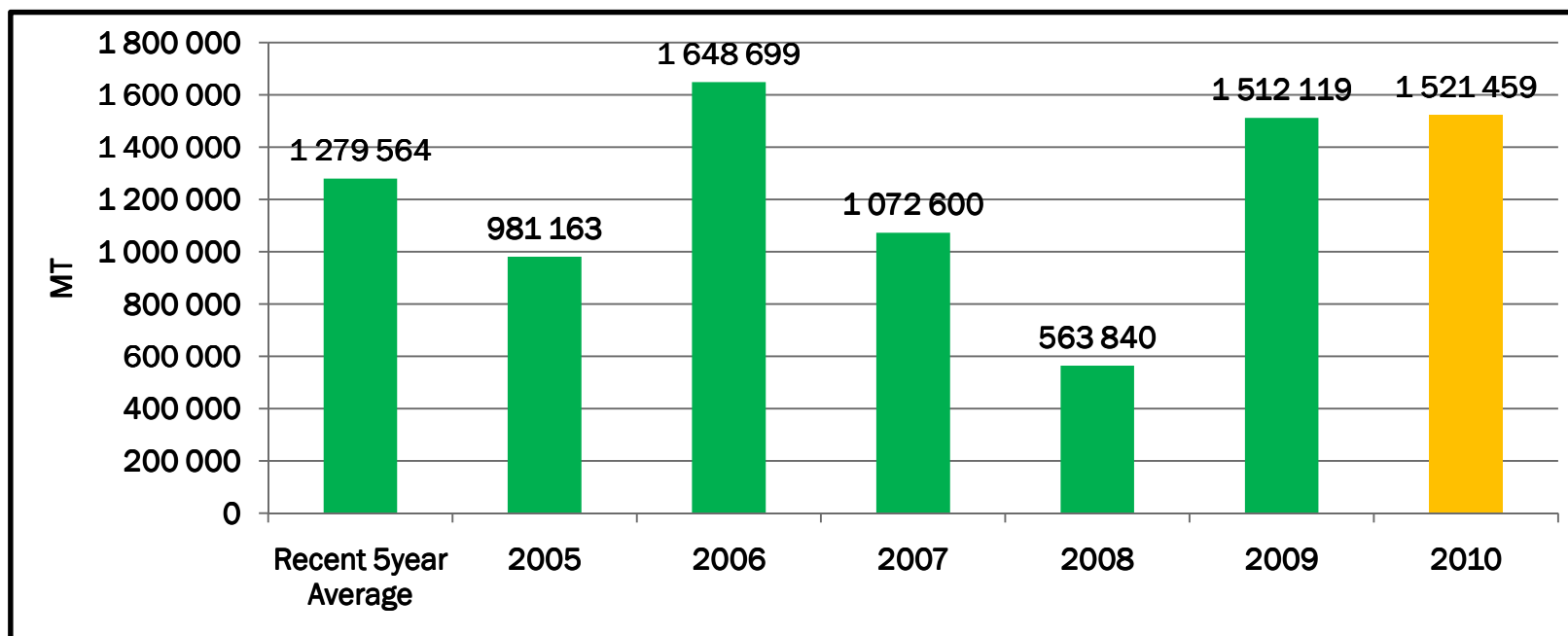
- Adoption of convertible multiple currencies as the medium of exchange from February 2009 led to
 - Restocking of shops with basic households goods
 - Industry capacity utilisation rose from 10% in 2008 to over 30% in 2009
 - A dramatic fall in inflation: from hyperinflation to low levels
 - Monthly inflation averaged -0.2% over the period Jan 2009 – May 2010
 - Year on year inflation for May 10 was 6.1% (CSO)
 - The economy grew for the first time since 2002
 - GDP growth for 2009 was estimated at 3.7%(IMF) and 5.1%(MoF).
 - GDP is projected to grow by about 3%(IMF) and about 7% for 2010.

Despite the dramatic economic decline.....

- Malnutrition indicators point to a stable food security situation albeit characterized by relatively high chronic malnutrition levels over this period.
- But all malnutrition indicators remained below internationally accepted emergency thresholds.

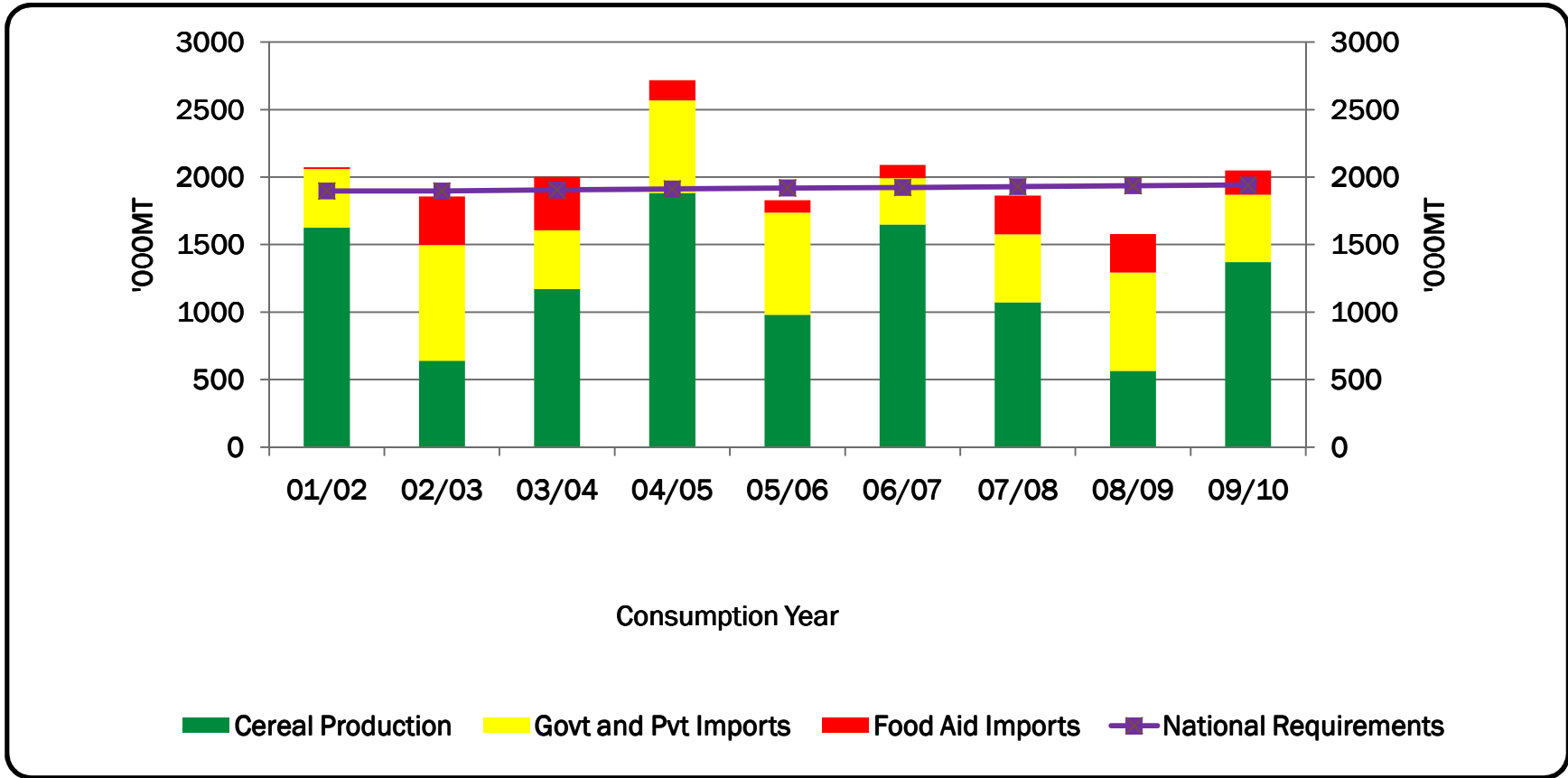


Domestic Staple Cereals Production



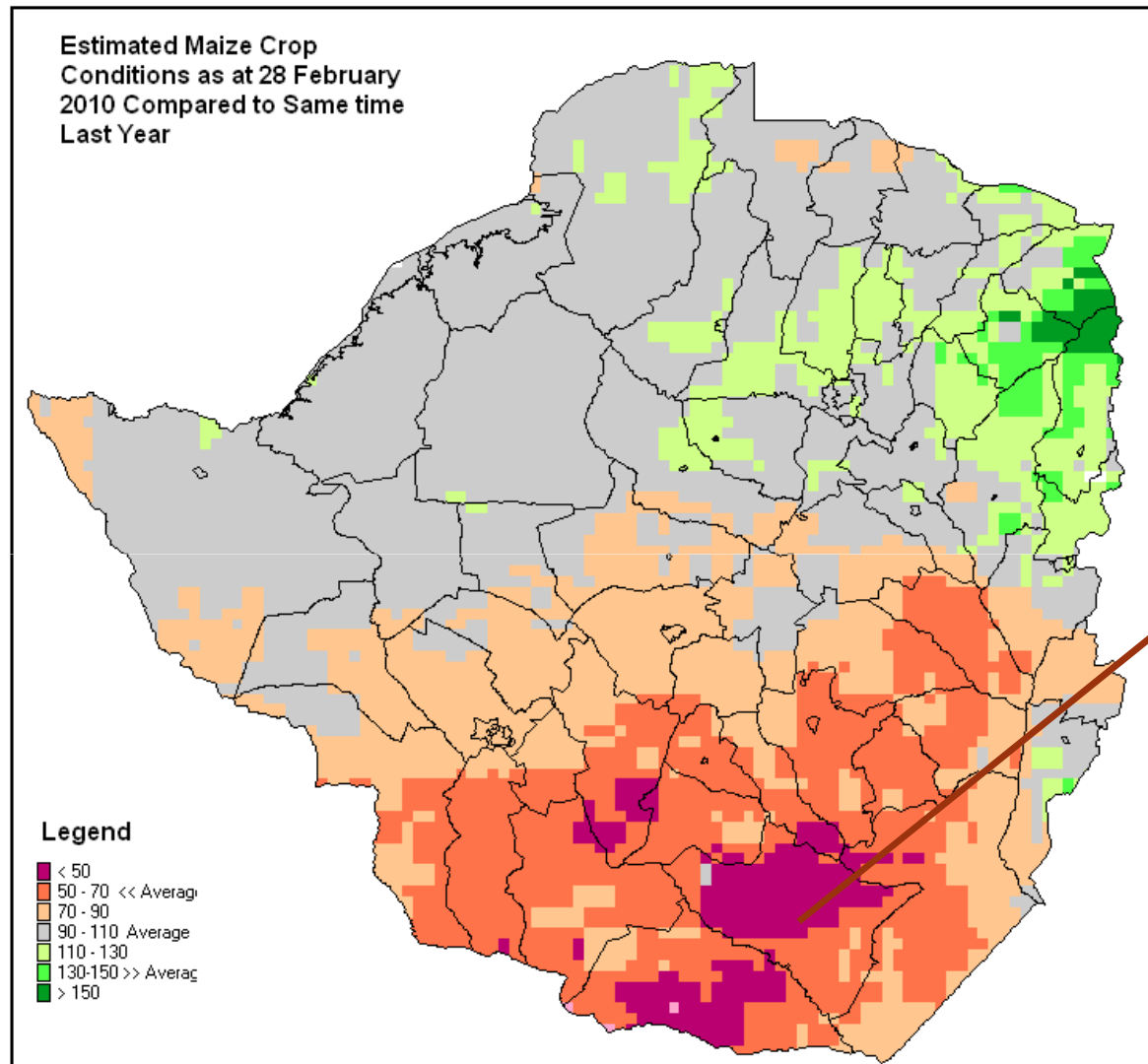
- In the recent past domestic cereal production has been variable and below national production.
- The Ministry of Agriculture, Mechanisation and Irrigation Development estimated that the 2009/10 domestic cereal harvest would be about 1.5million MT.
 - This is similar to last year's production, but 31% above the recent five year average cereal production.

Although domestic staple cereals production has consistently fallen short of national requirements over the past nine years, national requirements were generally satisfied by Government, private sector and food aid imports.



Current Season Shocks

Poor rainfall season quality



The Southern parts of the Country were most affected

Compromised Access to crop production inputs....

- Fertilizers were generally in short supply throughout the season
- Household's purchasing power arising from
 - Poor liquidity due to use of the multi-currencies
 - Poor produce market arrangements for the 2008/09 agricultural output.
- The traditional draft power shortages(57% of the rural household were found to have no draft power)
- Shortage and high cost of labour, mainly in the commercial farming sectors(A2, SSC and LSC farms)

HIV and AIDS continue to wreck havoc in the country...

- While the HIV and AIDS prevalence in the Zimbabwean population has drastically gone down from 26% in 2002 to about 13% in 2010, the scourge continue to directly and indirectly disrupt livelihoods in the country

Overview of Vulnerability Situation



ZIMBABWE
Vulnerability
Assessment Committee

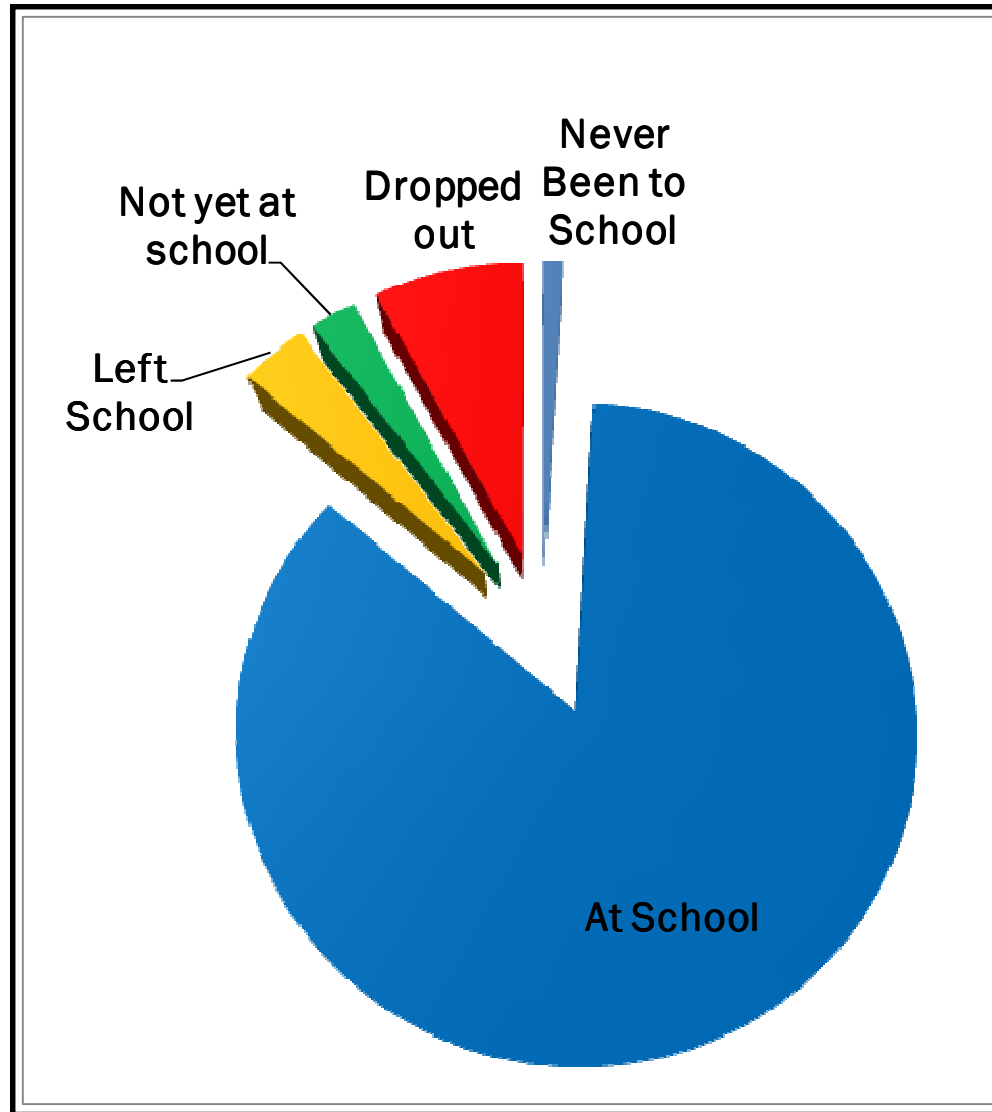
EDUCATION

To assess access to education by rural households and identify challenges to optimum access of the service.



ZIMBABWE
Vulnerability
Assessment Committee

School Attendance



- Of the pupils in the school going age(6-17years)
 - 86% were attending school,
 - 8% drop outs,
 - 3% had left school
 - 2% were not yet at school and
 - 1% had never been to school.

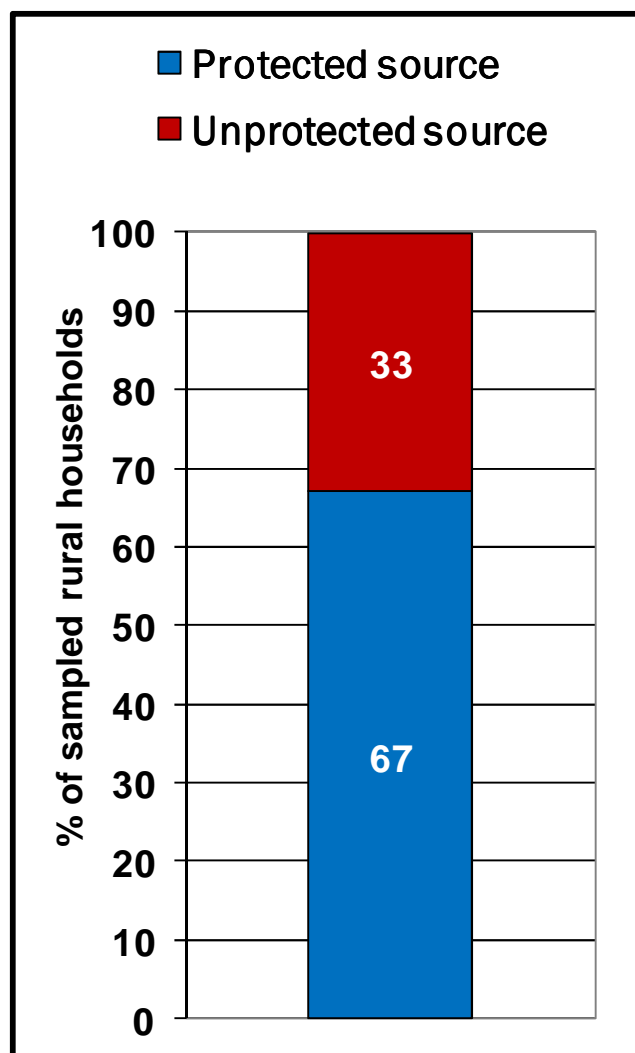
Education – Drop Outs

- The majority of drop outs (74%) occurred at primary school level and the proportion of drop outs falls as the level of education increases.
- The main reason for dropping out of school was identified as financial constraints (62%).
- A sizable population of children dropping out of school (11%) cited refusal to go to school.
- On average, boys (43%) were dropping out of school than girls.

Water and Sanitation

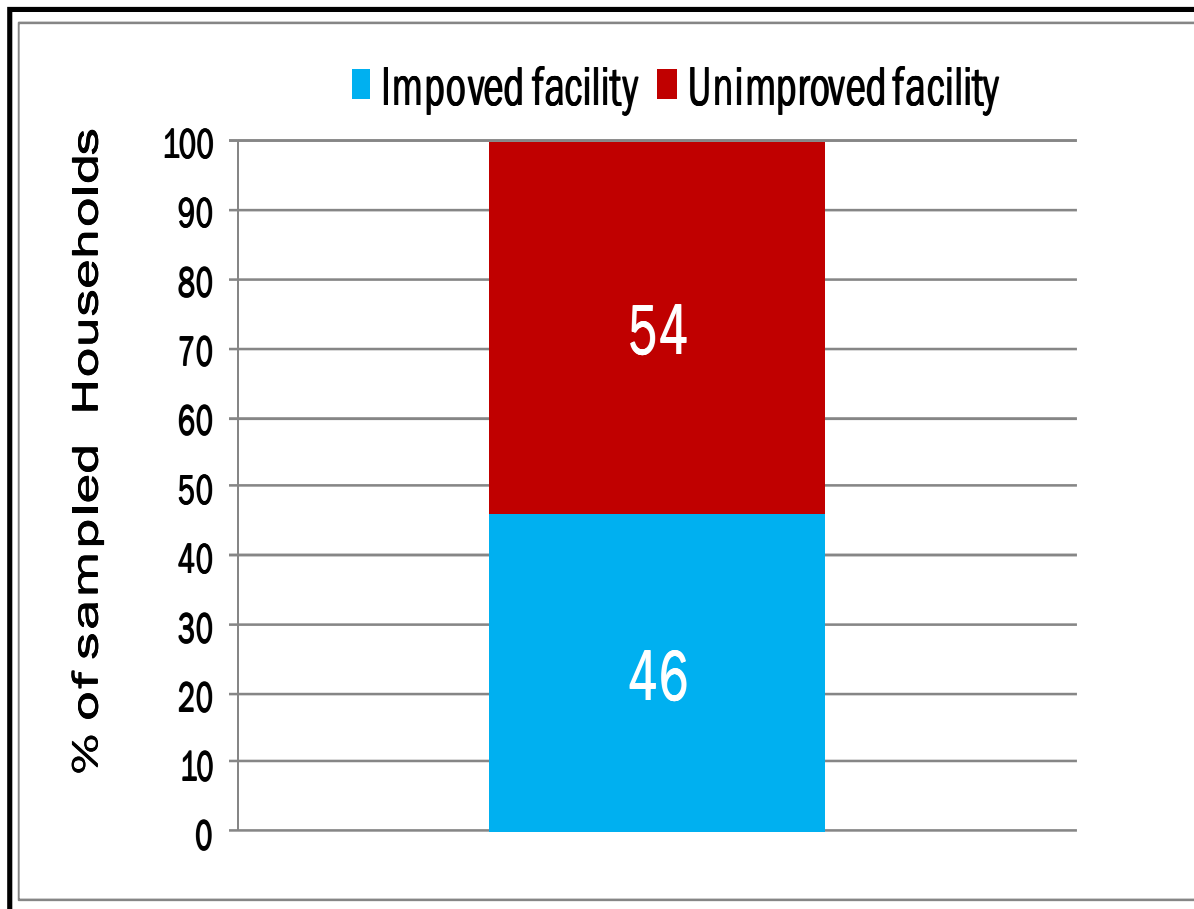
To record basic hygienic practices
and access to clean water and
safe sanitation.

Sources of Drinking Water



- A majority (67%) of sampled rural households depend on protected water sources for drinking (mostly from boreholes (40%) and protected wells (21%));
- A third (33%) of the households draw water from unprotected sources
- 27% reported treating their drinking water.

Type of Toilet Facility Used



- The majority of households are using unimproved toilet facility

Food Security

To determine the rural population that is likely to be food insecure in the 2010/11 consumption year, their geographic distribution and the severity of their food insecurity.



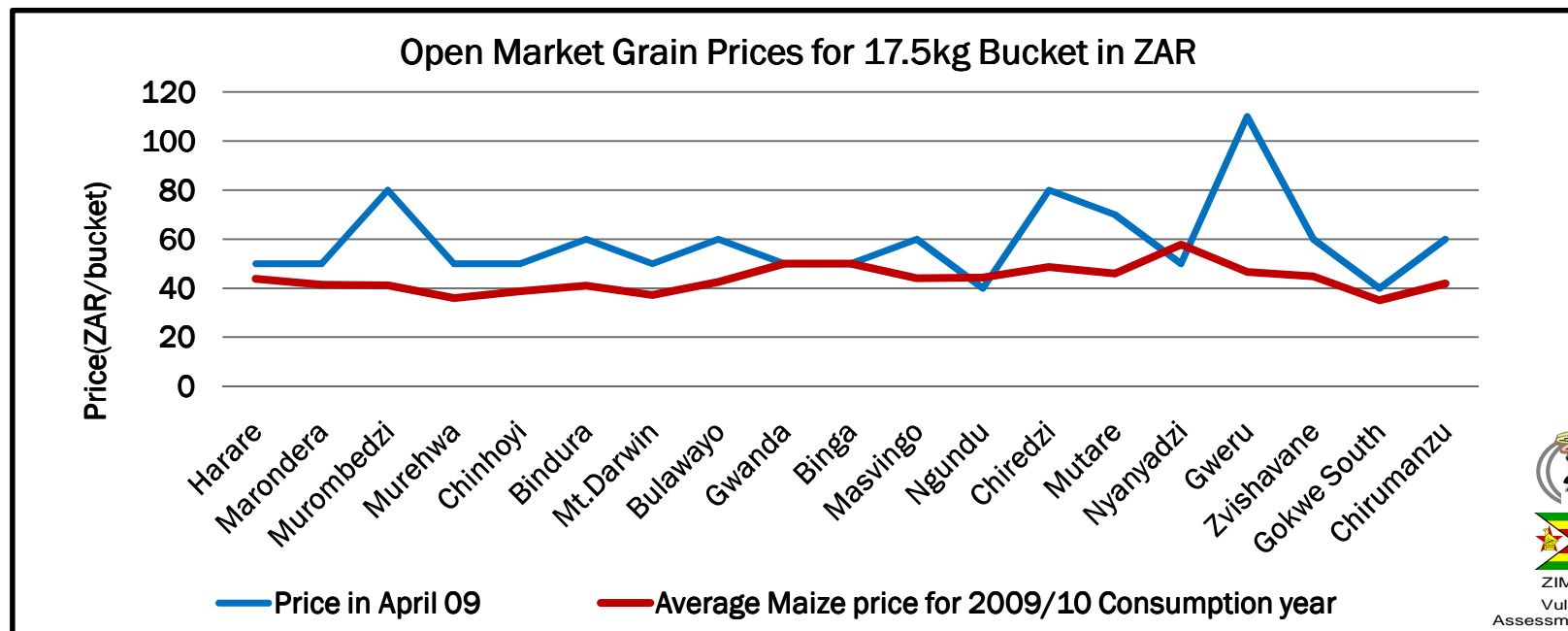
ZIMBABWE
Vulnerability
Assessment Committee

Food Security Analytical Framework

- Household food security status was determined by comparing its estimated food entitlements to its minimum food requirements- based on food consumption patterns in Zimbabwe(income, consumption and expenditure surveys)
- Household food entitlements (measured in maize equivalency) were computed from summing up;
 - cereal stocks
 - own food crop production
 - potential income from own cash crop production
 - potential income from livestock
 - Potential income from other sources such as gifts, remittances, casual labour, pensions and formal employment.
- Household requirements (measured in maize equivalence) was computed from the product of Household size and percapita cereal requirements
- When Household Food entitlements are equal or greater than Household requirements then the Household is food secure

Assumptions for the Projected Food Security Outcomes

- Most Household's purchasing power is likely to continue being stable from April 2010 to end of March 2011 and maybe even improve given;
 - the projected economic growth for 2010 (2-4% GDP growth, GoZ and WB).
 - The prevailing fair to good livestock conditions and hence stable livestock prices
 - Stable food prices: last consumption year's average maize grain prices were lower they were in April 2009 for most monitored markets(WFP and National Early Warning Unit Data))

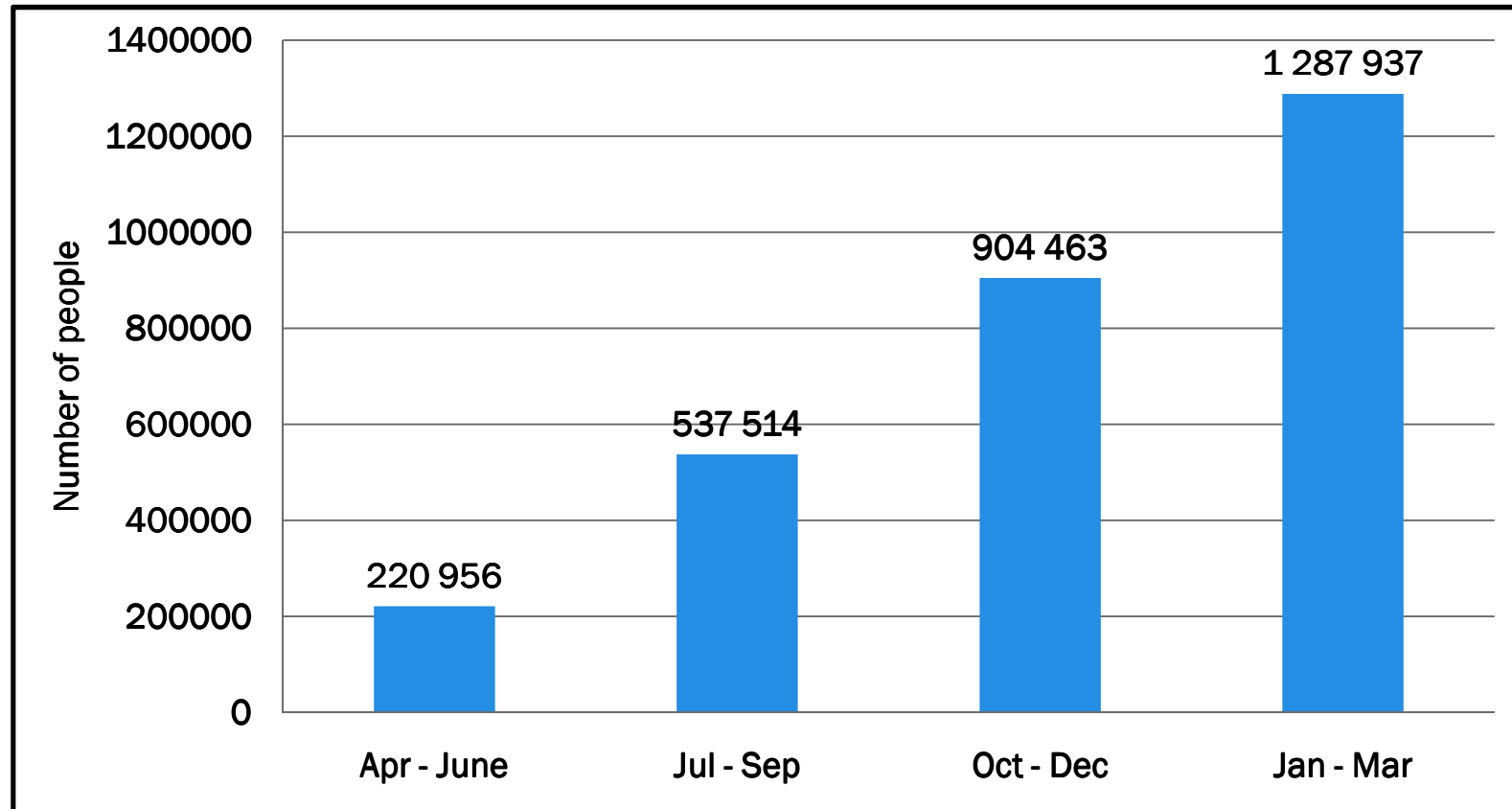


Projections for the Marketing Year (2010/11)

- A total of **1,3 million** rural people, at peak, will not be able to meet their minimum cereal needs during the 2010/11 season. This represents about **15%** of the total **rural population; similar to last year at national level but different at sub-national level.**
- The total cereal entitlement gap summed across all households is estimated at **98 000 Mt.** This is a measure of the missing food entitlements for all food insecure households.



Prevalence of Food Insecure People Over Time

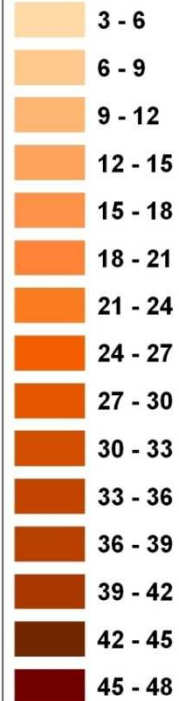


- Around 221 000 people were food insecure during the time of the assessment: April – June 2010.

PROPORTION OF FOOD INSECURE RURAL POPULATION -
 January to March 2011
 As per ZimVAC Rural Livelihoods Assessment, May 2010

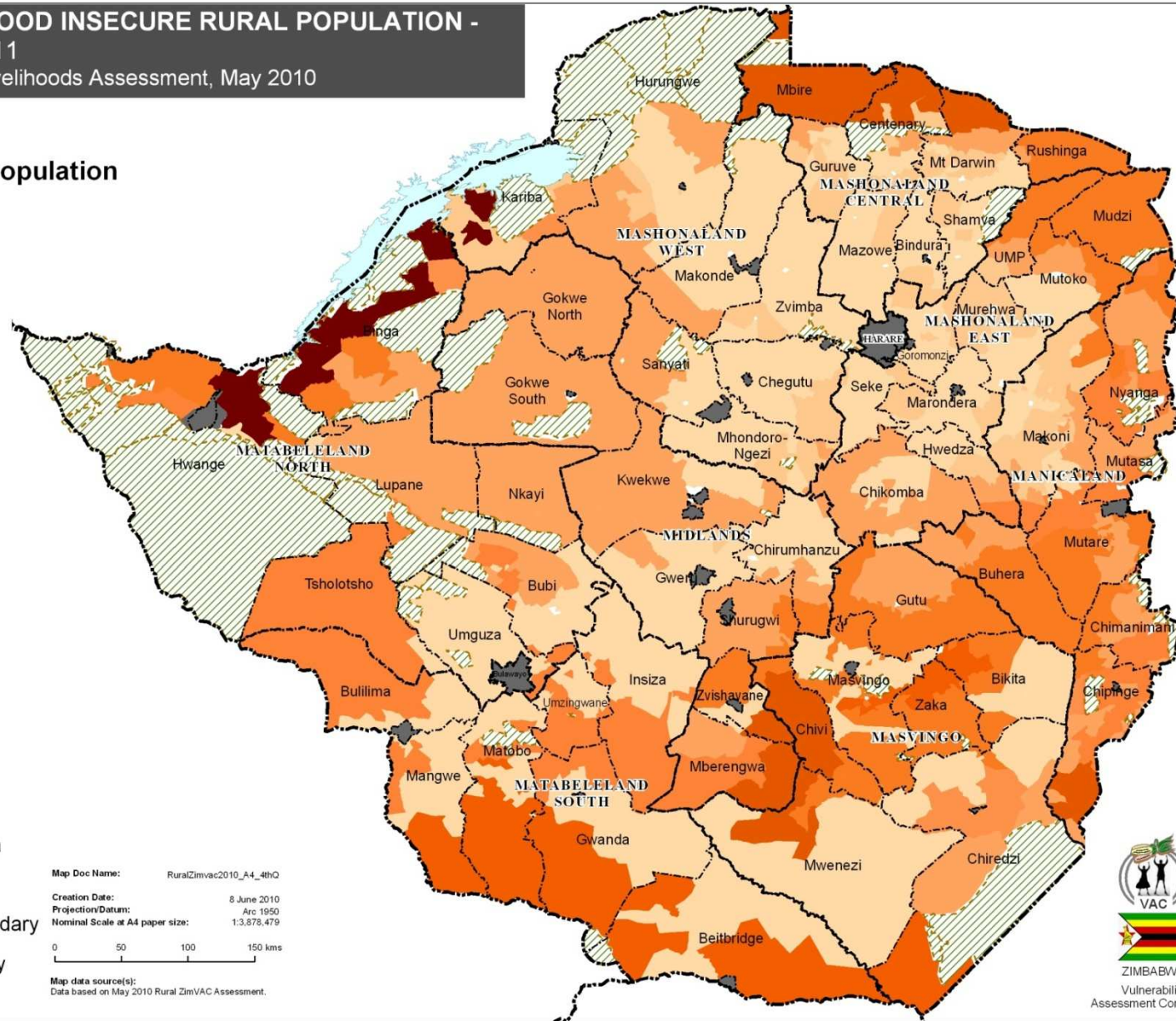
Legend

% Food Insecure Population



- Lake Kariba
- Conservation Area
- Urban Area
- International Boundary
- Province Boundary
- District Boundary

Map Doc Name: RuralZimvac2010_A4_4thQ
 Creation Date: 8 June 2010
 Projection/Datum: Arc 1950
 Nominal Scale at A4 paper size: 1:3,878,479
 0 50 100 150 kms
 Map data source(s):
 Data based on May 2010 Rural ZimVAC Assessment.

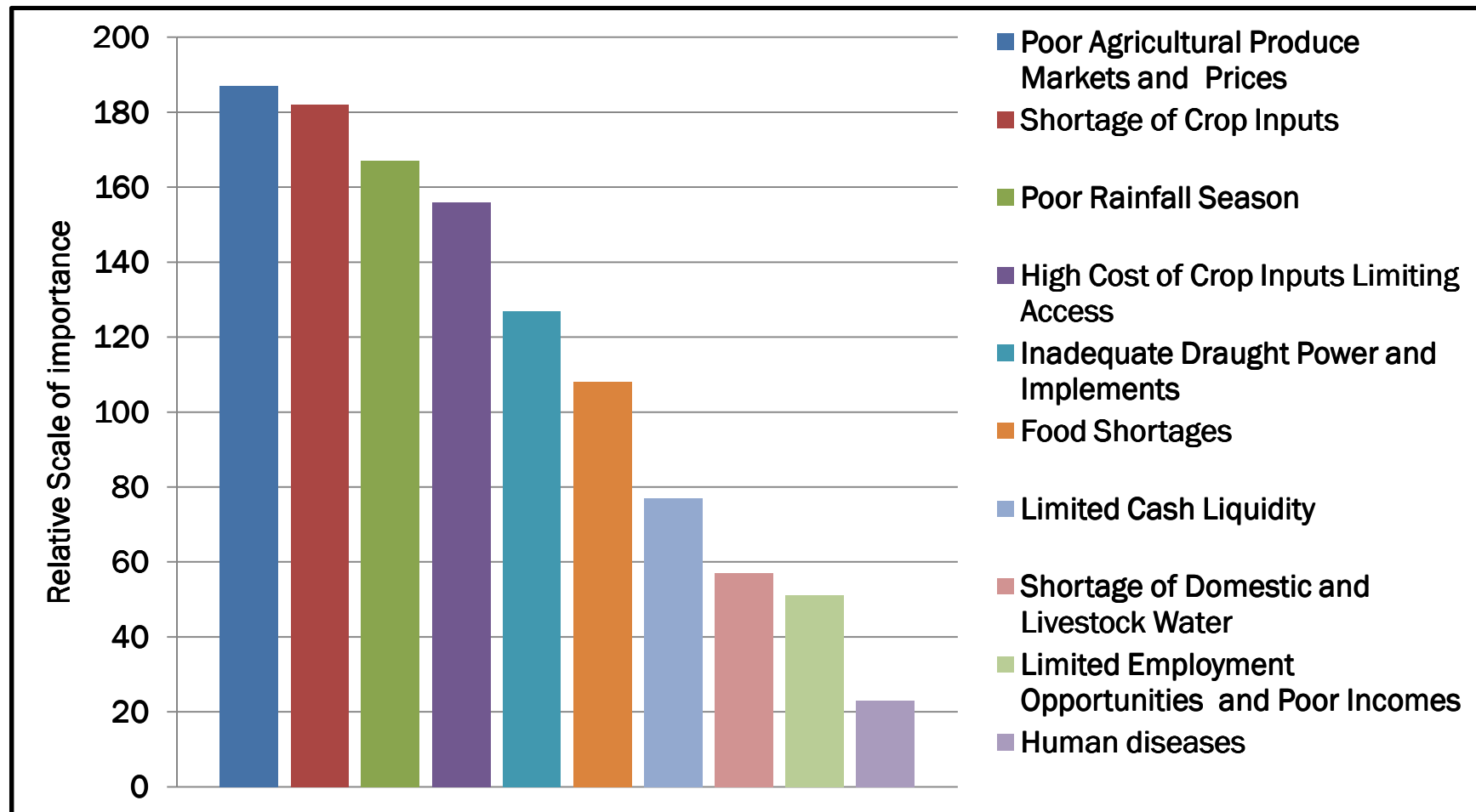


The map shows geographic distribution of food insecure people between January and March 2011 at Sub-district level

Community Challenges and Development Priorities

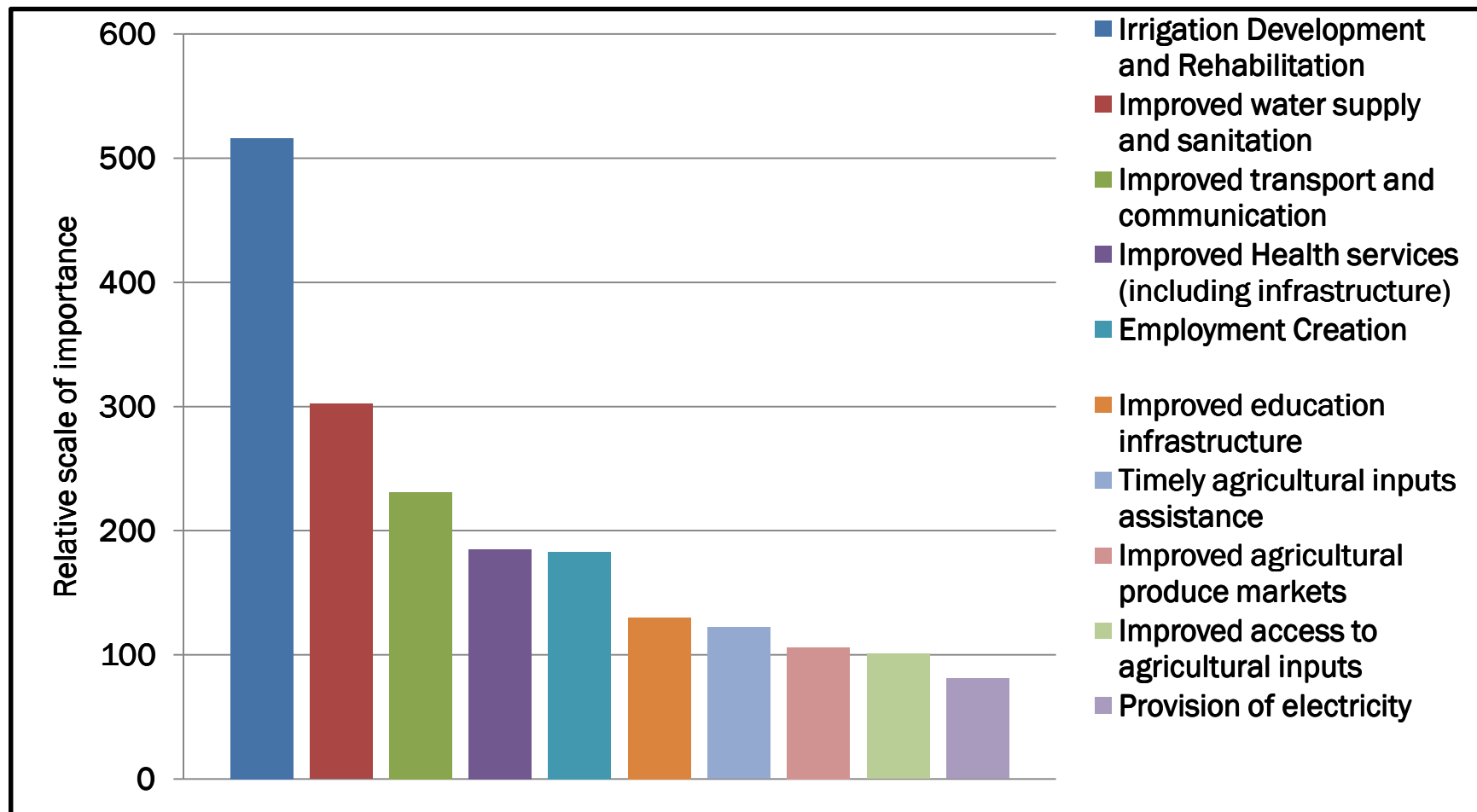
To identify transitional development priorities for rural communities in all rural provinces of the country.

Community Challenges



- Means of production were ranked highly (Inputs, Draught Power, water etc)
- No major difference in the top Ten community challenges at provincial level were found. However, their relative ranking of importance differed from one province to another.

Community Development Priorities



- Development priorities generally linked/addressed challenges though on a medium to long term basis.
- At Provincial level the same priorities are highlighted though not having the same rank as at national level

Conclusions and Recommendations



ZIMBABWE
Vulnerability
Assessment Committee

Recommendations

- National Level Food Assistance Interventions be prioritised on the basis of indicative district level food insecure populations provided **using strategies that recognise the general availability of basic food stuffs on the market.**
- Public Works / Food for Assets Programmes be activated starting from July, targeting food insecure households.
- Humanitarian interventions be diversified to have a broader social protection focus including:
 - Cash transfers to poor rural households to improve access to the non-food essential services and **also creating a market for those households with excess agricultural produce.**
 - Short- to medium term income generating activities for poor households with economically active members.

Recommendations.....cont'd

- Rural livelihoods enhancement interventions by Government and development partners should be **informed by the community development challenges and priorities articulated by the communities.**
- Efforts be made to establish reliable perennial sources of clean water to avoid households resorting to unsafe and distant water sources when their main sources get exhausted;
- To promote and enhance community-based management and initiatives in WASH for sustainable clean and safe water supply, good hygiene and sanitation practices
- Closely monitor the food security situation.

Thank You



ZIMBABWE
Vulnerability
Assessment Committee