



Swazi VAC 2010 Annual Vulnerability Assessment Regional Presentation

15 JULY 2010



World Food Programme



unicef



World Health Organization

Outline

- ❑ Introduction
- ❑ National overview/context
- ❑ National overview of current year hazards and shocks
- ❑ Overview of vulnerability situation
- ❑ Overview of response strategies/coping strategies
- ❑ Outcomes and scenarios
- ❑ Main conclusions and recommendations

Purpose & Specific objectives

"to assess the levels of livelihoods and vulnerability in rural communities"

Purpose & Specific objectives

Purpose

- to assess the levels of livelihoods and vulnerability in rural communities

Specific Objectives

- Identify share of households with inadequate food by region and Livelihood zone.
- Using the household survey as a baseline for developing a multi-agency, inter-sectoral monitoring system in the country.
- Identify share of population with access to water and sanitation facilities by seasons and by regions in all livelihoods/food economy zones.
- Assess status of services provided to the rural populace
- Measure short- to medium-term outcomes of food assistance

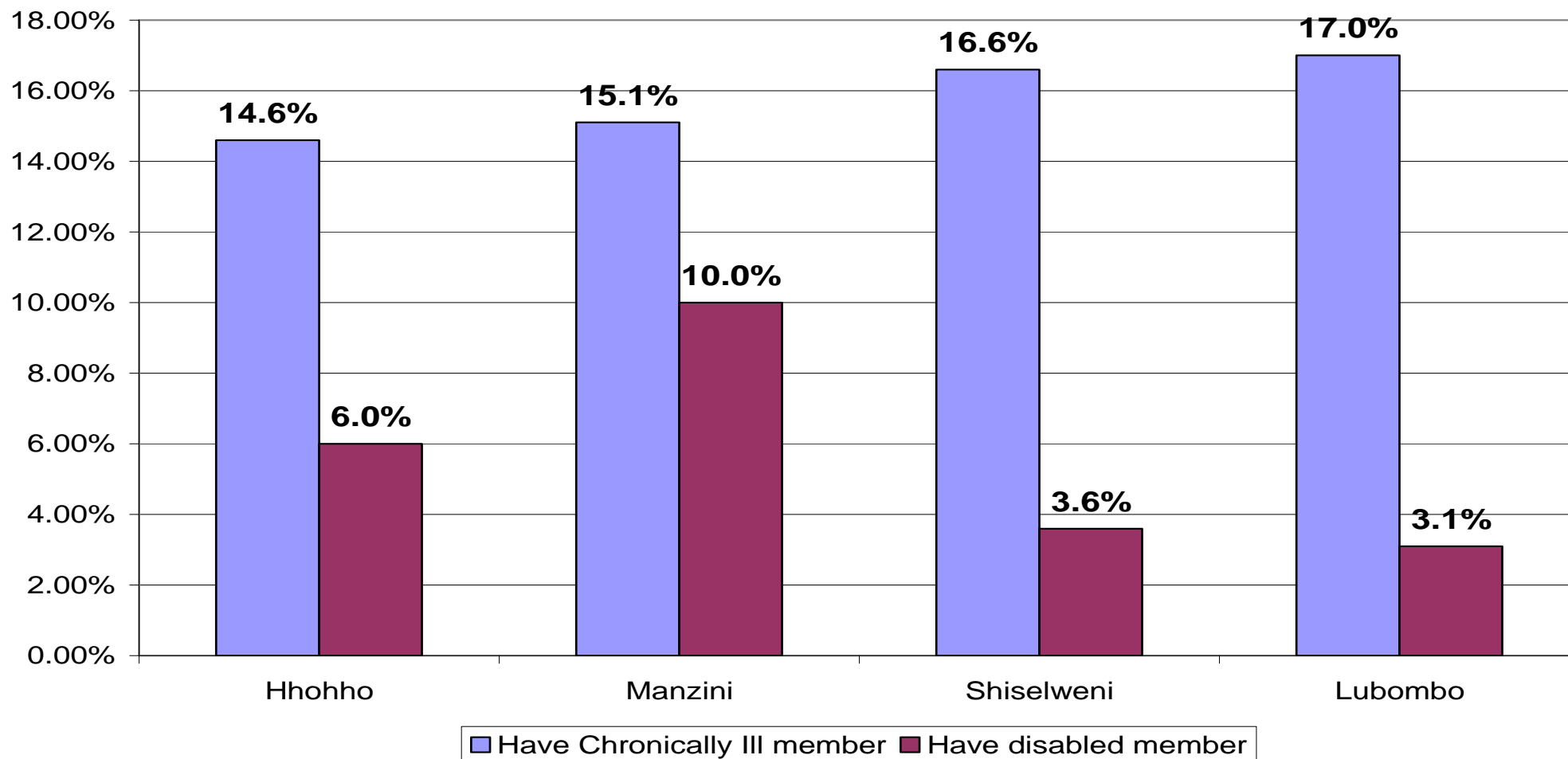
Methodology

- Approaches and Methods
 - FGD covering 40 chiefdoms
 - HH Survey 1394 hh)
- Assessment coverage
 - National
 - Four regions (Hhohho, Manzini, Shiselweni and Lubombo)
 - 7 Livelihood Zones
 - 40 food distribution points

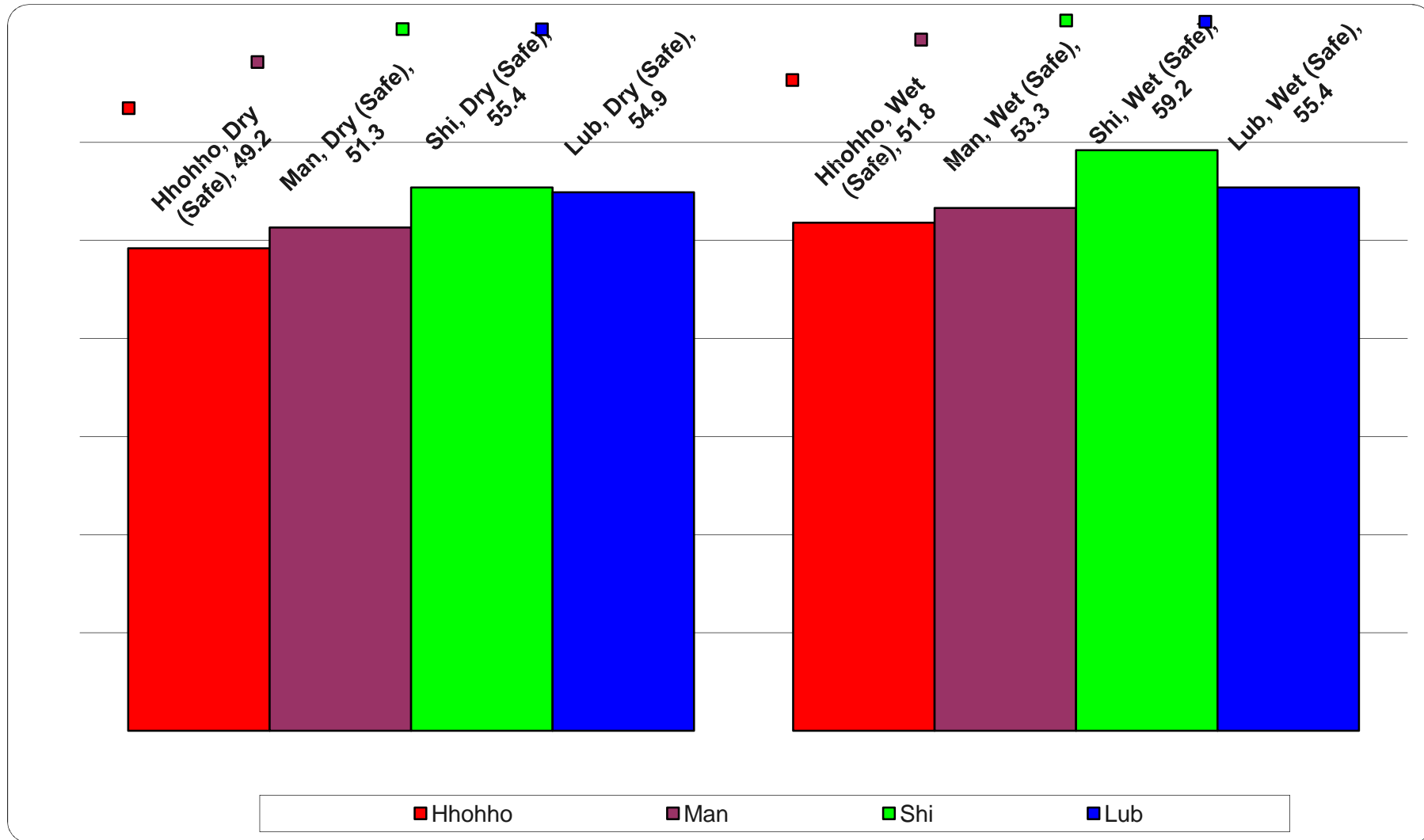
Macro-Economic Conditions

- ❑ Real GDP growth declined to 0.4% in 2009 compared to a growth of 2.4% attained in 2008.
- ❑ Projections for 2010 estimate growth to improve to 1.1%.
- ❑ Sectors that could make a major contribution to the projected growth include manufacturing, agriculture and tourism.
- ❑ Target inflation for 2010 remains in the single digit range and has been on a relatively downward to stable trend since the last quarter of 2009.

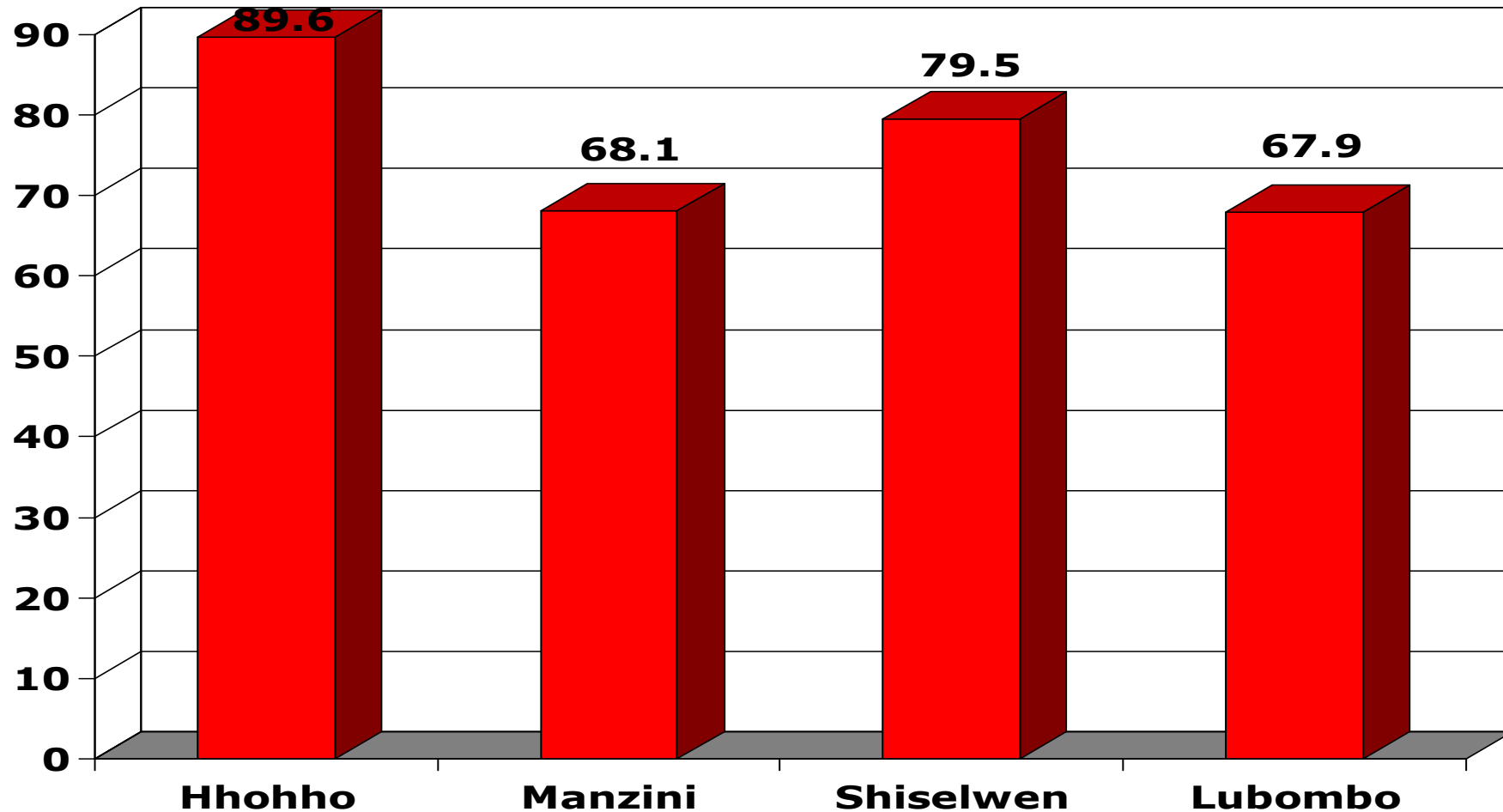
Proportion of HH with chronically ill and disabled member



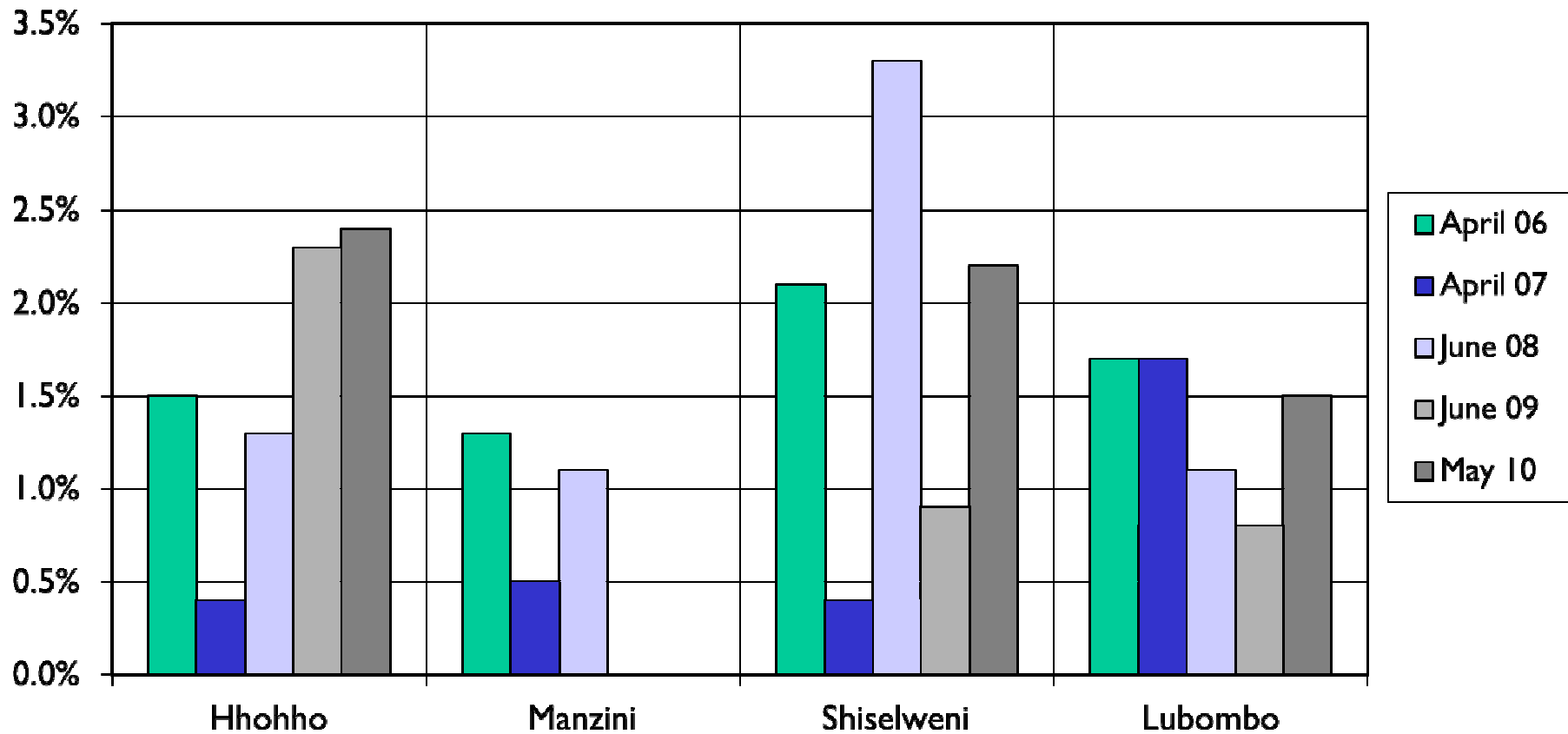
Safe Water By Region and Season



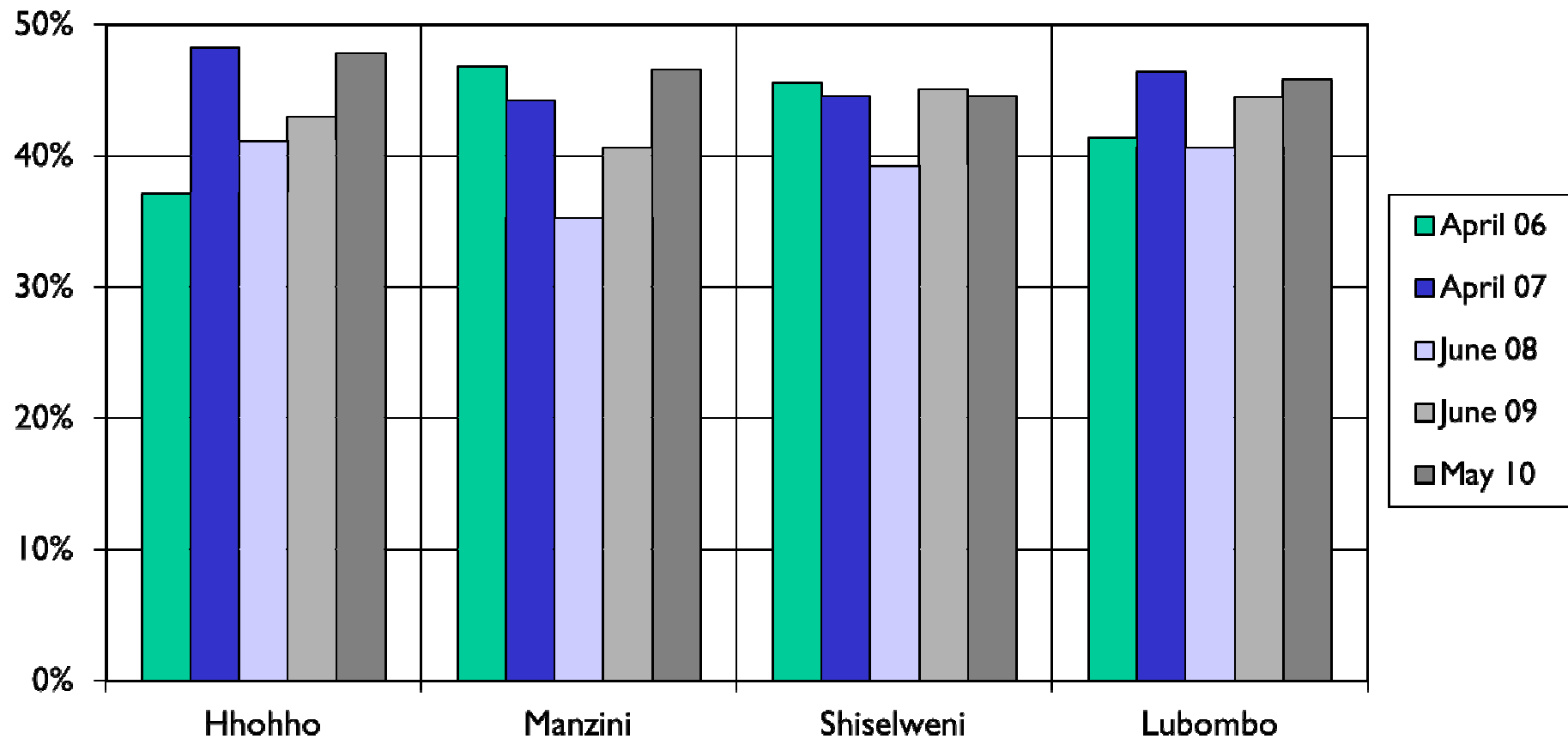
Proportion of Household with Improved Sanitation Facilities



Trends in Wasting



Trends in Stunting



Disease Outbreaks

- ❑ Incidence of TB is estimated at 1198 per 100000 population (2009) & Mortality is estimated 317 per 100000 population
- ❑ 300 Measles cases were reported in 2010 & 2 confirmed deaths in the Lubombo region
- ❑ No cholera and A/H1N1 cases reported this year through daily active disease notification system

Social and Economic

- ❑ Decline in SACU revenue had a negative impact on budget allocations to Government Ministries & Departments
- ❑ Loss of employment as a result of closure of major industries (Paper Mills & Sappi Usuthu)

Rainfall Performance for 2009-10 Season

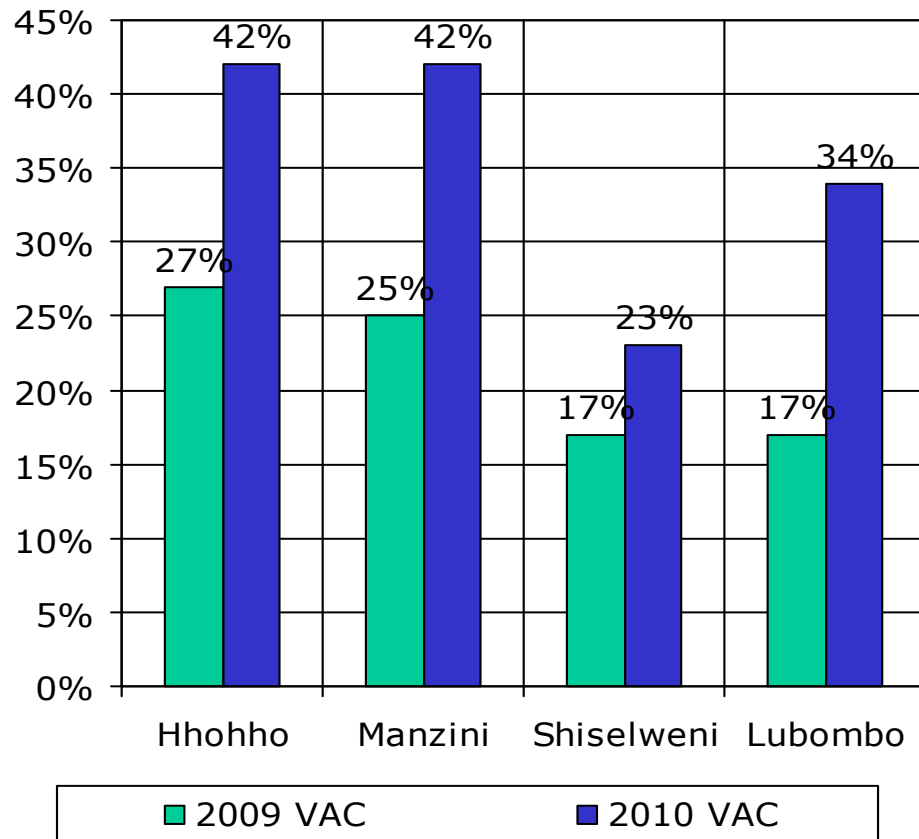
- ❑ Delayed onset of rainfall season - mid to late October
- ❑ Normal to above normal rainfall received in the Highveld & moist Middleveld although distribution was erratic
- ❑ Most parts of the Lowveld experienced dry spells at critical stages of crop development resulting in crop failure
- ❑ Slight increase in area planted & associated 6% increase in expected production.
- ❑ Grazing conditions and water availability improved as a result of good rains received towards the end of the seasons

National Food Balance Sheet

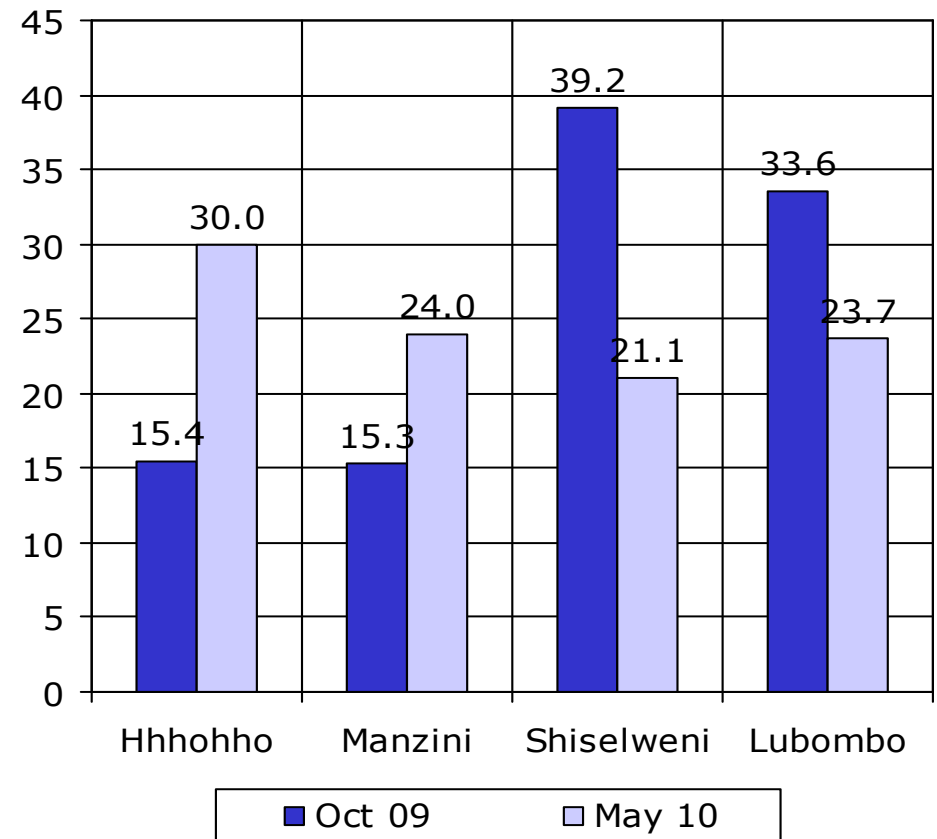
Figures in '000 Metric Tonnes				
	Maize	Wheat	Rice	All
A. Domestic Availability	77.68	6.26	0	83.94
B. Gross Domestic Requirement	104.70	30.0	15.0	149.27
C. Domestic Shortfall/ Surplus	-29.02	-27.74	-17.0	-73.33
D. Planned Imports				
Commercial	35.0	24.0	14.5	73.5
Food Aid	4.05	0	0	4.05

Food Security Shocks and CSI

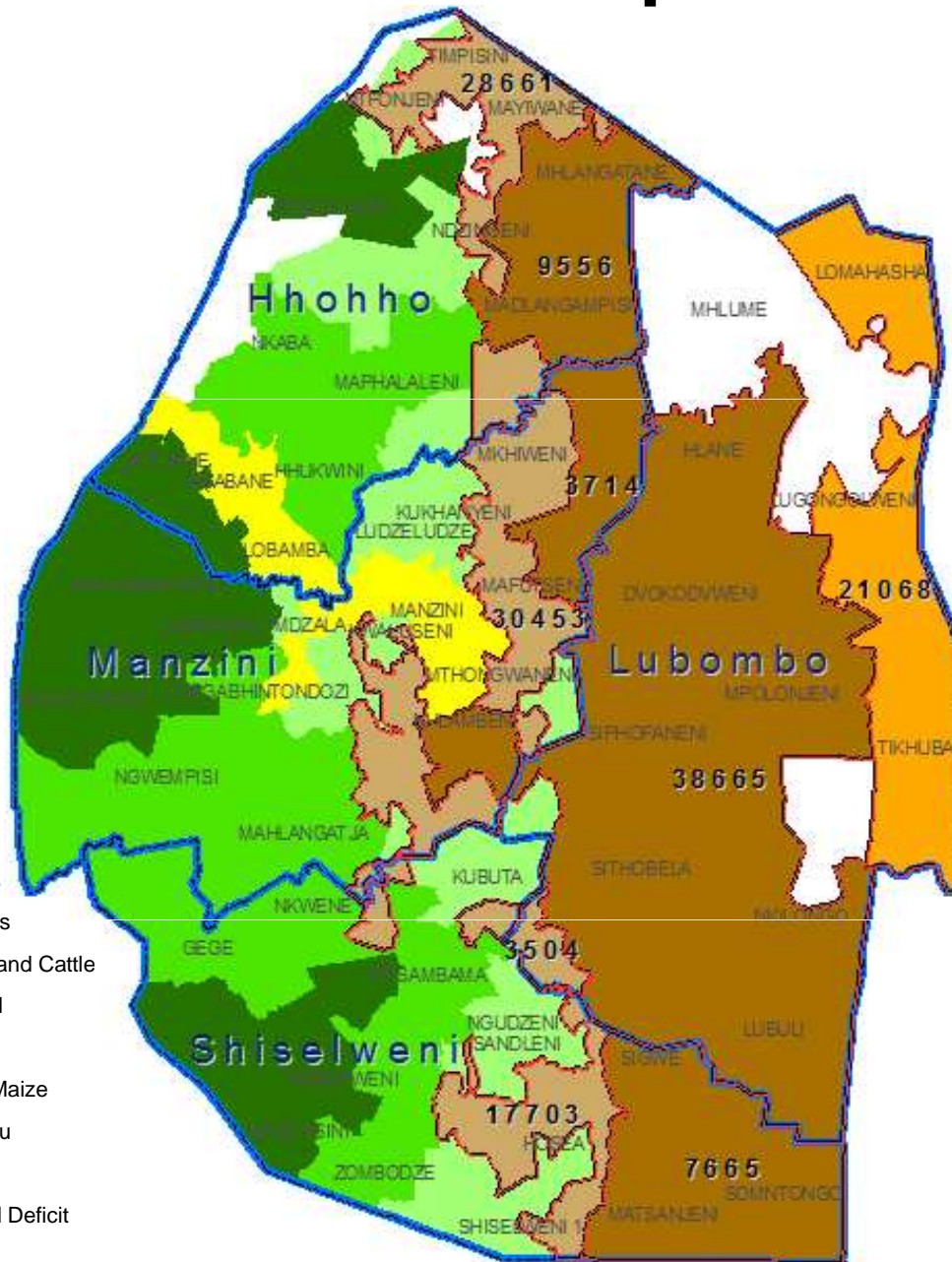
Experienced shock to FS



Average CSI



Livelihood Zone Map – Areas with food deficit



Legend

Livelihood Zones

- Timber Highlands
- Highveld Maize and Cattle
- Moist Middleveld
- Dry Middleveld
- Lowveld Cattle Maize
- Lubombo Plateau
- Peri Urban
- Zones with Food Deficit
- Regions

Region	DMV	LCM	LP	Total
Hhohho	28,661	9,556		38,217
Manzini	30,453	3,714		34,167
Shiselweni	17,703	7,665		25,368
Lubombo	3,504	38,665	21,068	63,237
Total	80,321	59,600	21,068	160,989

Conclusion and Recommendations

- ❑ Collaboration between National Disaster Management Agency and all other stakeholders on recovery/mitigation programmes should be strengthened.
- ❑ Prohibitive cost of agricultural production could be addressed through input price support to farming households that have a potential
- ❑ There is need to develop methodologies to disaggregate levels of food insecurity at household level i.e Transitory, Acute & Chronic. This could enhance appropriate intervention strategies.
- ❑ Stunting must be made a national priority agenda item.
- ❑ Establishment of social health insurance scheme