

2010 SADC REGIONAL VULNERABILITY ASSESSMENT COMMITTEE DISSEMINATION MEETING

South Africa

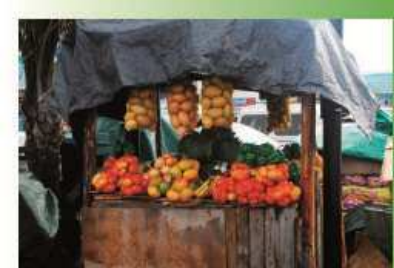
14-16 March 2010

Windhoek Namibia



agriculture,
forestry & fisheries

Department:
Agriculture, Forestry and Fisheries
REPUBLIC OF SOUTH AFRICA



Presentation Structure

- **Introduction**
- **National Overview**
- **Overview of Current Year Hazards and Shocks**
- **Overview of Food Security and Vulnerability Situation**
- **Suggestions: Policy and Development Programmes (short- and long-term)**
- **Policy Analysis**
- **Conclusion: Summary of Key Findings**

Introduction

Objective: To assess food in-security and vulnerability of households and communities within RSA

Approaches

- Analysis of Hazards and Shocks
- Analysis of Food availability
- Analysis of Food Accessibility
- Analysis of Food Utilization

Limitations:

- Still to Conduct a Baseline for Comparison

Methods and Area Covered

- Secondary Data Analysis - National



Macro-economic and Health Conditions

INDICATOR	MEASURE
Population	49,32 million (Stats SA, Mid Year Population Estimates, 2009)
Unemployment	Employment contracted by 1, 3% or 171 000 jobs between the fourth quarter of 2009 and the first quarter of 2010 Unemployment Rate = 25,2% (0.9%increase) - 4,3 Million Persons (Quarterly Labour Force Survey, May 2010).
HIV/AIDS	Estimated HIV/IDS prevalence =11.4% in 2006, 10.8% in 2007 and 10.9% for year 2008 (DOH country HIV/AIDS progress report, 2010)
Vulnerability to food insecurity	An estimated 20% of South African households have inadequate or severely inadequate access to food (Stats SA GHS, 2010).
GDP	The Real GDP at market prices increased by 4.6% in the 1st Qrt 2010. - 1.3%, manufacturing, 0.8% mining and quarrying, 0.5% real estate and business services industry, 0.4 wholesale, motor trade and accommodation industry and general government services. For 2009 Qrt 1-4 there was a decrease of 7.4, 2.8 and increase of 0.9 and 3.2 Respectively (Stats SA GDP quarterly report, 2010).
Crude mortality rate	CDR – 2010 = 16.99%. The number of deaths peaked in 2006, with a slight decline (1.85%) registered in 2007 and decreased with 5.46% since 2007 (UNICEF 2008 & Central Intelligence Agency Fact book, 2010).
CPI	CPI – April 2010 = 4.8% [Lower than annual rate of 5.1 % in March 2010 (Stats SA CPI quarterly report, May 2010).

NATIONAL OVERVIEW OF CURRENT YEAR HAZARDS AND SHOCKS

Floods and Diseases

- Provinces affected by floods > Gauteng, Mpumalanga, Kwazulu-Natal, Limpopo and North West
- Floods damaged, farm structures and crops
- In KwaZulu – Natal (Bulwer area) there were reports of limited damage to home gardens of emerging farmers and the damage was predominantly on maize
- Mpumalanga (Albert Luthuli, Lekwa and Emalahleni Local Municipalities), Animals were also affected by floods resulting in mortalities.
- 463 Outbreaks of RVF reported since February across the country.
- ✓ Approximately 3% of sheep and 1% of cattle, on infected farms died as a result of RVF
- ✓ Fortunately the cold winter conditions brought a halt to the outbreaks.

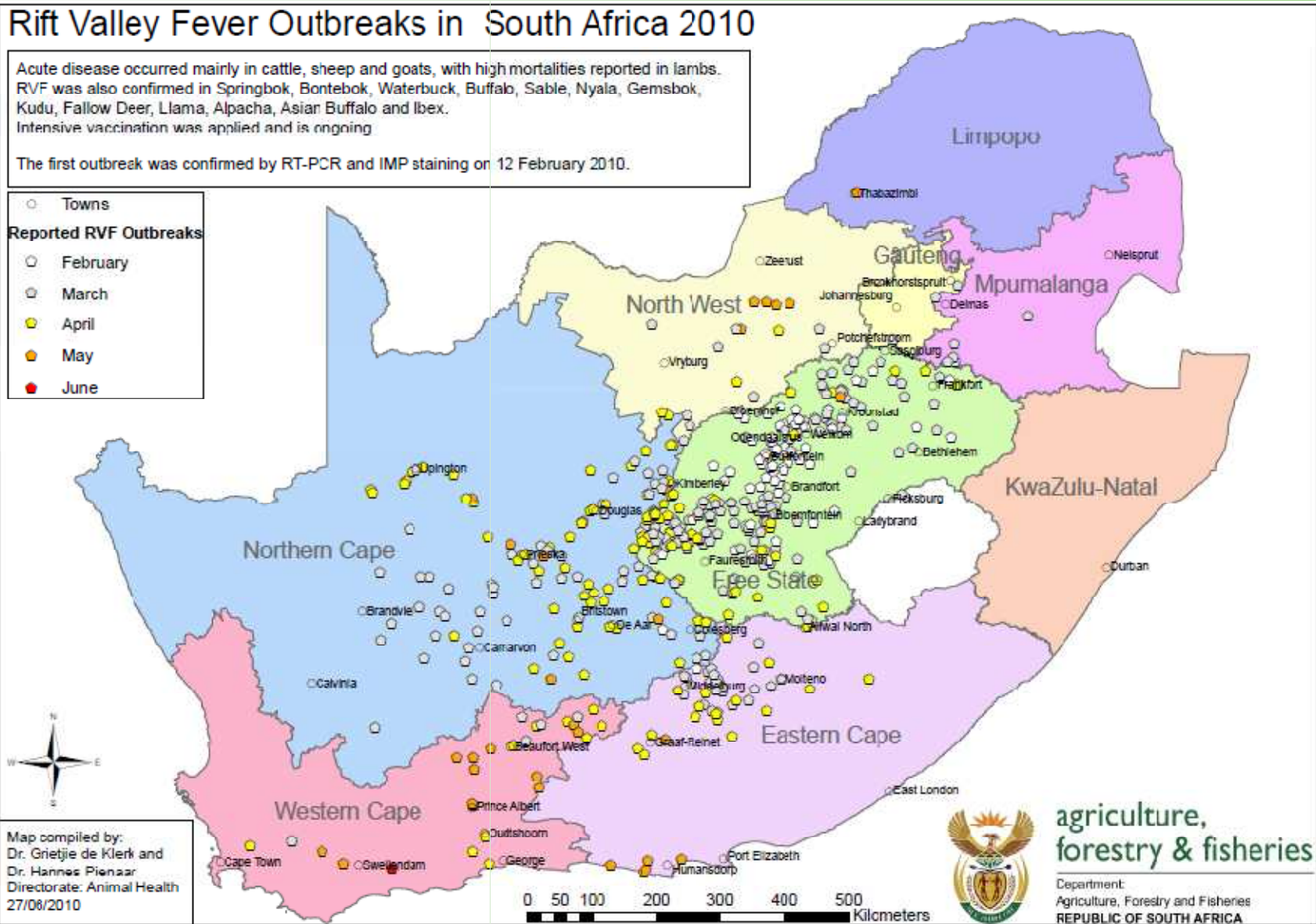
Rift Valley Fever Outbreaks

Rift Valley Fever Outbreaks in South Africa 2010

Acute disease occurred mainly in cattle, sheep and goats, with high mortalities reported in lambs. RVF was also confirmed in Springbok, Bontebok, Waterbuck, Buffalo, Sable, Nyala, Gemsbok, Kudu, Fallow Deer, Llama, Alpacha, Asian Buffalo and Ibex. Intensive vaccination was applied and is ongoing.

The first outbreak was confirmed by RT-PCR and IMP staining on 12 February 2010.

- Towns
- Reported RVF Outbreaks**
- February
- March
- April
- May
- June



Map compiled by:
 Dr. Grietjie de Klerk and
 Dr. Hannes Pienaar
 Directorate: Animal Health
 27/06/2010



agriculture,
 forestry & fisheries
 Department:
 Agriculture, Forestry and Fisheries
 REPUBLIC OF SOUTH AFRICA

HAZARDS AND SHOCKS (cont.)

Drought and Veld Fires.

- Provinces affected by Drought included the Eastern Cape (Cacadu, Amathole) and Western Cape (Eden and some parts of the Karoo).
- Western Cape: Drought aid is still to be processed to support farmers
- Western Cape: Reported devastating fires which affected mostly the farming areas.
- KwaZulu-Natal: reported fire outbreaks destroying grazing land and woodlots in Uthungulu.

Socio-Economic.

- **171000 jobs lost** between the fourth quarter of 2009 and the first quarter of 2010.
- **At least 79 000 of the jobs lost jobs were lost in the first quarter of 2010 (between January to March 2010) were in the formal non-agricultural sector**
- Northern Cape , poor road conditions and distance hampering access to communal gardens areas by potential buyers.
- The Green Flood alert reported that people to have drowned and at least 1400 people displaced in Gauteng and North West (Taung).

Weather Impact on Crop Production

Provinces	Districts	Impacts / Conditions.
Northern Cape	Provincial	Cotton, maize and wheat yields reduced due to poor rain water.
Eastern Cape	Cacadu	Crops were reasonable poor due to insufficient rainfall.
	Amathole	Aphids: impact on cabbage and rust on spinach and tomatoes.
KwaZulu-Natal	Uthukela	Total crop failure due to low rainfall
	Umzinyathi Uthukela	Poor rainfall meant that crops in these districts are under stress.
	Ugu	Severe wind storm damaged commercial macadamia plantations.
Mpumalanga	Provincial	Water logging: resulting in poor crops conditions.

Overview of the Food Security and Vulnerability Situation

- Expected commercial maize crop is 13,317 million tons, which is 10,51% more than the 12,050 million tons of the previous season.
- Projections for the current 2009/10 maize marketing season indicate a surplus of 2,203 million tons of maize at the end of April 2010. **Thus, enough maize is available for local consumption and to meet export demand.**
- Projections for the coming 2010/11 maize marketing season indicate a surplus of 3,748 million tons of maize at the end of April 2011. **Thus, enough maize will be available for local consumption and to meet export demand.**
- Projections for the current 2009/10 wheat marketing season indicate a surplus of 637 000 tons of wheat at the end of September 2010 when including **imports of 1,2 million tons.**
- Projections for the coming 2010/11 wheat marketing season indicate a surplus of 584 000 tons of wheat at the end of September 2011, including **imports of 1,6 million tons.**
- Still there are serious challenges in terms of **ACCESS!!!**

Food Availability: Commercial Production

Summer crops	Area planted 2009/10	4th Forecast 2009/10	Area planted 2008/09	Final crop 2008/09	Change %
	Ha	Tons	Ha	Ha	
Commercial:					
White Maize	1 719 700	7 999 250	1 489 000	6 775 000	+18,07
Yellow Maize	1 022 700	5 317 800	938 500	5 275 000	+0,81
Total maize	2 742 400	13 317 050	2 427 500	12 050 000	+10,51
Sunflower seed	397 700	508 715	635 800	801 000	-36,49
Soya-beans	311 450	587 950	237 750	516 000	+13,94
Groundnuts	57 450	95 570	54 550	99 500	-3,95
Sorghum	86 675	267 693	85 500	276 500	-3,19
Dry beans	44 100	57 850	43 800	67 030	-13,70
Total	3 639 775	14 834 828	3 484 900	13 810 030	+7,42

agriculture, forestry & fisheries

10

Food Availability: Non-Commercial Production

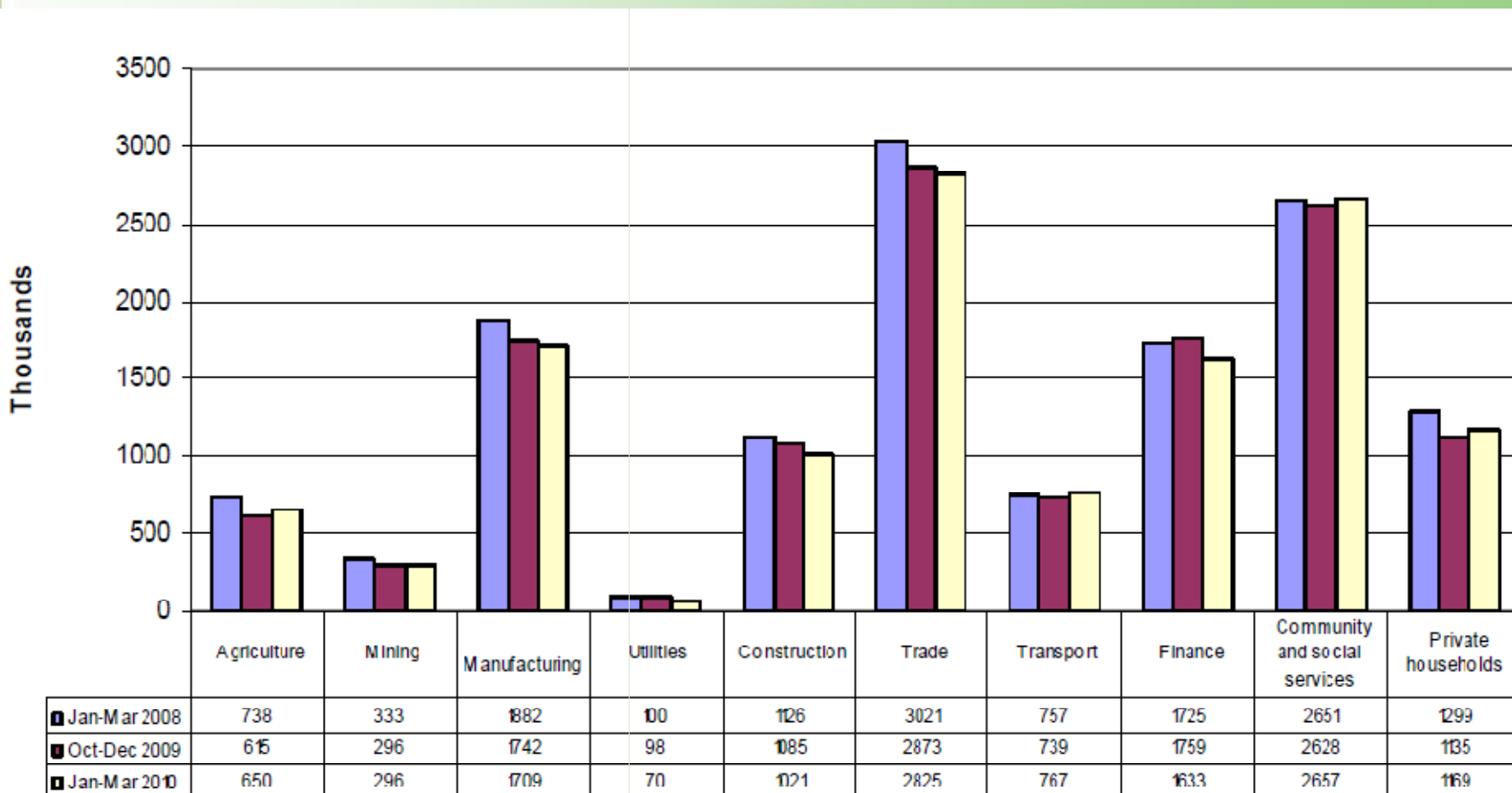
CROP	Area planted 2009/10	Estimate 2009/10	Area planted 2008/09	Final crop 2008/09	Change
	Ha	Tons	Ha	Tons	%
Non-commercial agriculture:					
White maize	371 861	421 969	356 276	378 576	+11,46
Yellow maize	149 079	183 895	112 407	138 057	+33,20
Total	520 940	605 864	468 683	516 633	+17,27

11 ■ Less than a quarter of South African households (20,7%) are involved in agricultural production - grains (49,1%), fruit and vegetable production (47,7%), poultry (30,1%) and livestock (27,5%)- **Instead a majority of the South Africans purchase their food!**

Food Access: Employment by Industry

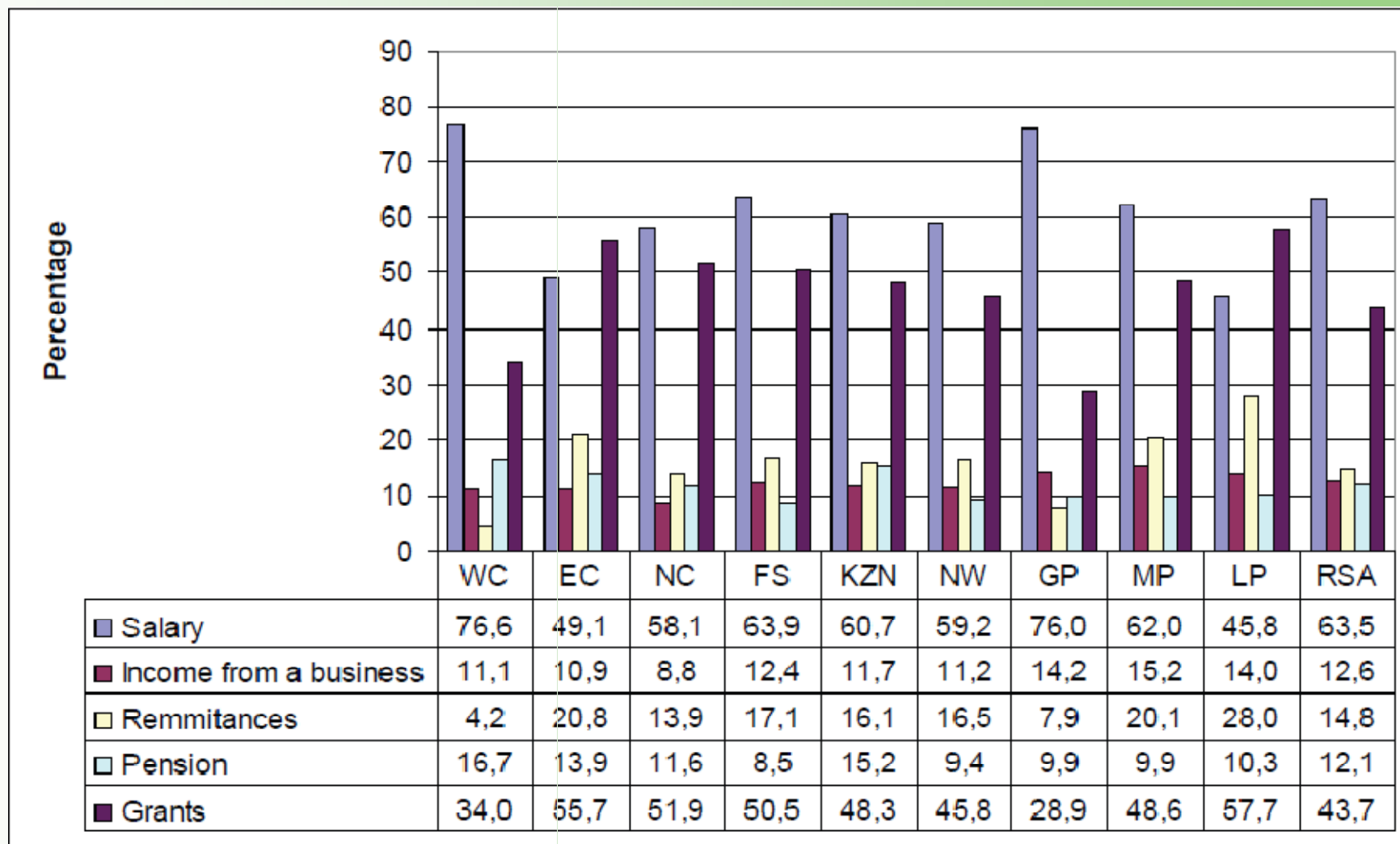
•171 000 Jobs lost (4th Q 2009 – 1st Q 2010)

•79 000 Jobs lost (Jan - Mar 2010 in the Formal Non Agric. Sector)



Source: Stats SA QLFS (2010)

Food Access: RSA Household Income Sources



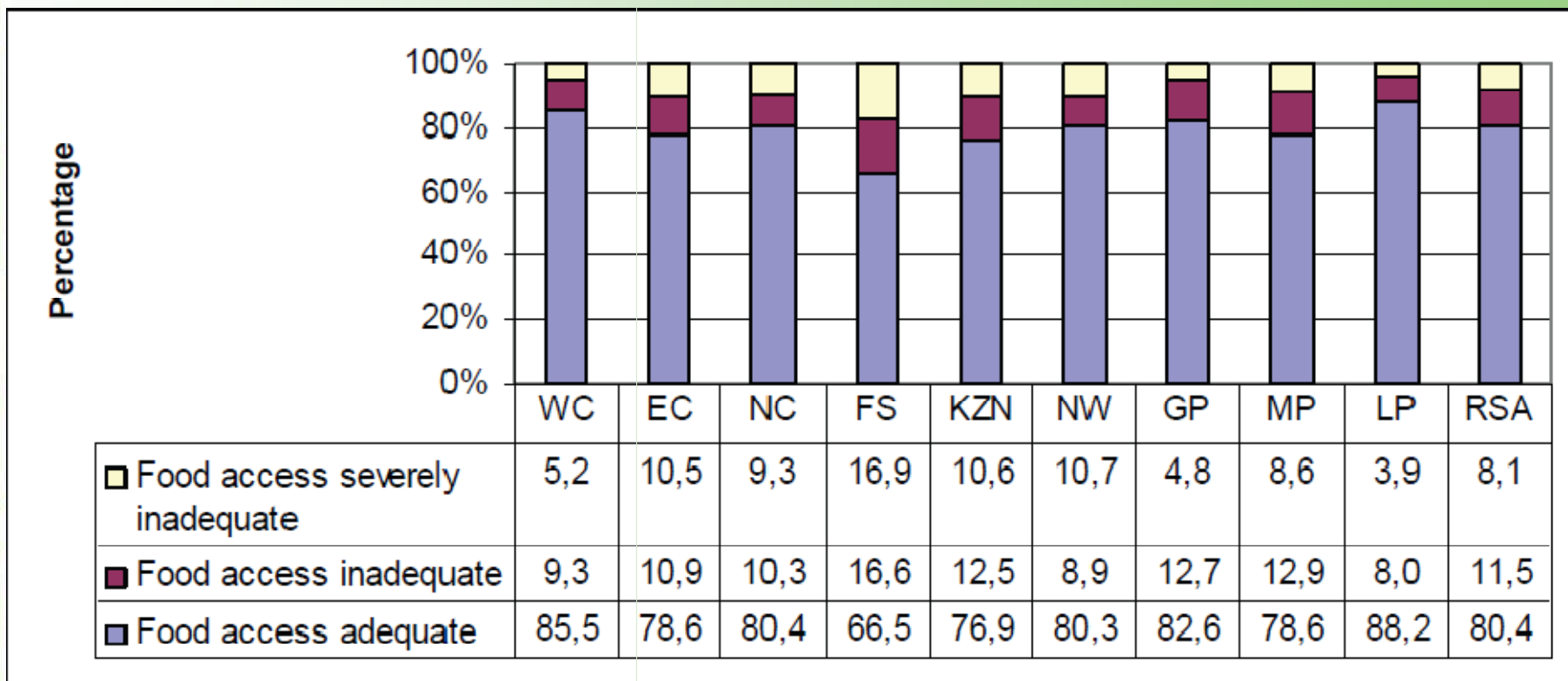
Food Access: Food Prices

Comparison between rural and urban food prices for selected food items

Product	Rural Food Prices (R)			Urban Food Prices (R)			Price diff. Apr'9	Price diff. Jan'10	Price diff. Apr'10
	Apr'9	Jan'10	Apr'10	Apr'9	Jan'10	Apr'10	R/Unit	R/Unit	R/Unit
Full Cream Long Life Milk 1L	9.44	10.28	10.97	9.20	10.11	9.09	0.23	0.17	1.88
Loaf Of Brown Bread 700g	6.92	6.78	6.93	7.17	6.97	7.00	-0.25	-0.19	-0.07
Loaf Of White Bread 700g	7.61	7.56	7.73	7.87	7.83	7.72	-0.26	-0.27	0.01
Maize Meal 5kg	28.36	29.09	25.45	22.20	23.64	22.45	6.17	5.44	3.00
Margarine 500g	14.04	14.61	15.25	13.84	12.88	12.68	0.20	1.73	2.57
Peanut Butter 410g	21.76	16.37	14.44	15.26	15.48	15.66	6.5	0.89	-1.22
Rice 2kg	29.53	28.58	27.33	26.28	23.14	21.72	3.25	5.44	5.61
Sunflower Oil 750ml	14.47	17.20	12.14	14.30	12.81	12.61	0.17	4.39	-0.47
Ceylon/Black Tea 62.5g	5.89	7.06	8.17	6.92	7.02	7.10	-1.03	0.04	1.07
White Sugar 2.5kg	20.29	20.72	21.74	17.65	18.15	18.92	2.64	2.57	2.82
Total							17.62 (+)	20.22 (+)	15.20 (+)

(Source: NAMC, 2010)

Food Access by Province (2009)



Source: Stats SA GHS (2010)

Food Utility: Nutrition Overview

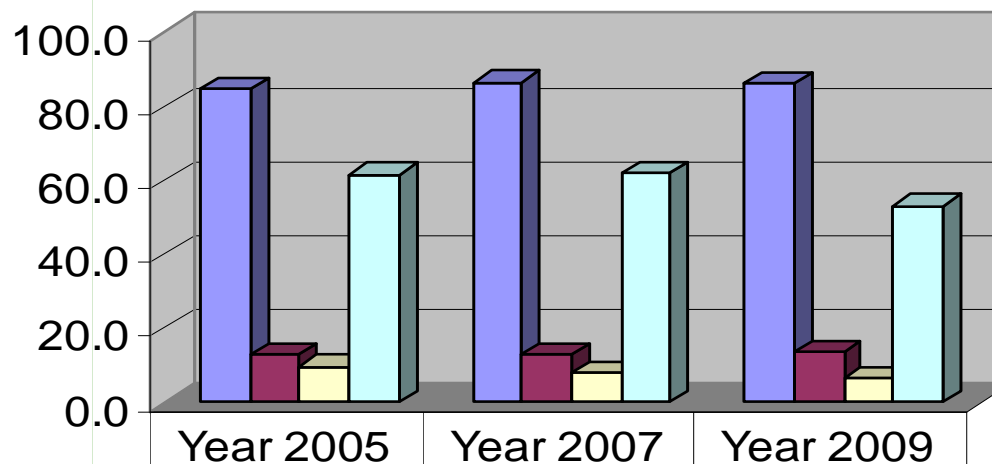
Anthropometry and deficiencies	Comparison indices	Years of comparison	
		1999	2005
Stunting	Overall stunting	21.6	18
	Severe stunting	6.5	5.1
	Children aged 1 – 3 yrs	*	24
	4 – 6 yrs	23.8	16.4
Underweight	Rural areas	4.9	3.8
	Urban areas	2.4	5.1
Iron deficiency	Anemia	20.2	27.9
	Moderate anemia	*	6.4
	Severe anemia	*	0.3
Vitamin A deficiency	Children aged 1-5 yrs	33.3	65.1
Zinc deficiency	Overall deficiency	*	45.3
	Children aged 1- 3 yrs	*	51.3
	4 – 6 yrs	*	45.4

Notes: *No data

Source: Department of Health, Food Consumption Survey (1999, 2005)

Food Utility: Water and Sanitation

Comparison of the main sources of water and sanitation for households (2005-2009)



	Year 2005	Year 2007	Year 2009
■ Piped water	84.9	86.6	86.6
■ Water from source	12.9	12.9	13.4
■ HH with no flush toilet	9.7	7.9	6.6
■ HH Refuse removed	61.7	62.1	53.1

Source: Stats SA, GHS (2005, 2007 & 2009)

Suggestions: Policy and Development Programmes (short- and long-term)

Policy/Interventions	Policy Statement	Implementation	Food Security Implications
Restrictions on importing key commodities (formal and informal trade)	Import and export tariffs	Department of Trade & Industry	i) Protection of domestic food production and food industry
Restrictions limiting participation in domestic marketing	Competition Act	Competition Commission	i) High food prices ii) Uncompetitive market behavior [prize fixing]
Subsidies on key commodities	Zero rating of key food products	Treasury [Zero taxation]	i) No VAT on key food products and some non-food staffs (i.e. paraffin)
Restrictions on food aid distribution	N/A		
Transport and logistics	Agro-logistics Strategy for South Africa	DAFF/Transnet	i) Usage of rail system to transport grains, linking it to the storage facilities & mills.
Input availability and distribution	i) CASP ii) MAFISA iii) OMNIA/ SASOL NEGТ	DAFF	i) Provision of production & marketing infrastructure ii) Micro-loan lending [production inputs]
Macro-policies (foreign exchange, interest rates, credit, etc.)	Monetary Policy [inflation targeting]	Reserve Bank of South Africa [Monetary Policy Committee]	i) Controlling of consumer spending while encouraging economic growth through interest rates regulation.

Conclusion: Summary of Key Findings

- Current shocks for the current season included job losses (4,3 Million Persons Unemployed), high food prices (especially in rural areas), droughts, floods, veld fires, pests, HIV/AIDS.
- At least 1,3% or 171 000 jobs were lost between the fourth quarter of 2009 and the first quarter of 2010 (At least 79 000 of the jobs lost were lost in the first quarter of 2010 between (January to March 2010) were in the formal non-agricultural sector)
- Impact of jobs lost estimated at almost 1 million more people affected/vulnerable to food insecurity!
- Expected commercial maize crop is 13,317 million tons, which is 10,51% more than the 12,050 million tons of the previous season.
- Projections for the current 2009/10 maize marketing season indicate a surplus of 2,203 million tons of maize at the end of April 2010. Thus, enough maize is available for local consumption and to meet export demand.
- Less than a quarter of South African households (20,7%) are involved in agricultural production - grains (49,1%), fruit and vegetable production (47,7%), poultry (30,1%) and livestock (27,5%)- Instead a majority of the South Africans purchase their food!
- RSA's major income sources include salaries (63,5%) and grants (43,7%), business, remittances, and pension – Thus the jobs lost are a serious knock on the lives of many!