



NAMIBIA

Vulnerability
Assessment Committee

NAMIBIA

2010/2011 FOOD SECURITY AND LIVELIHOOD VULNERABILITY SITUATION

Introduction:

Objectives:

- To estimate the 2009/10 crop production in Namibia
- To forecast the 2010/11 marketing year food security and livelihood vulnerability situation
- To provide appropriate recommendations aimed at reducing hunger and extreme poverty in the long-term

Methodology:

- Main methodologies used were the Livelihood Based Vulnerability Analysis (LBVA) and Crop Estimates. Key approaches applied included the household economy analytical framework, rapid crop assessment, complemented by review of secondary information

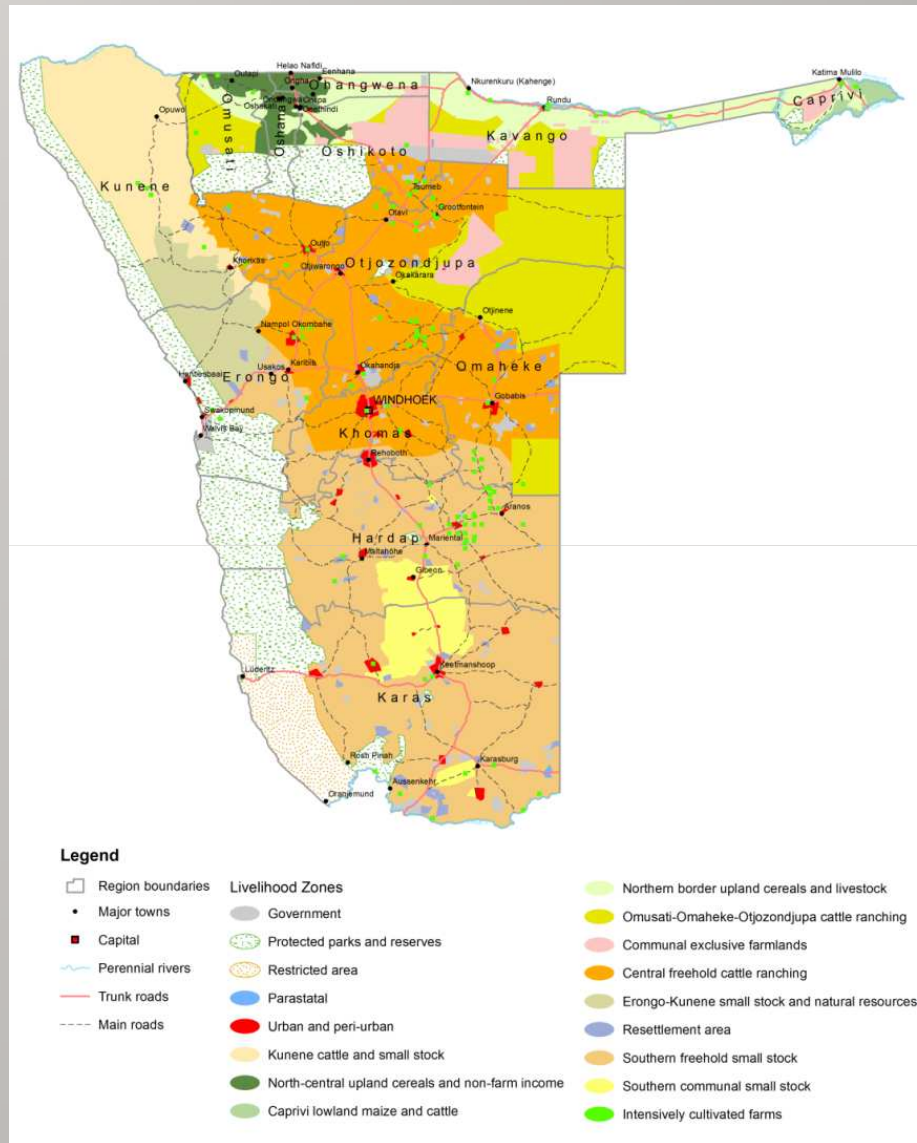
Main data collection tools:

- Key informant and farming households interview checklists

Analytical processes:

- Data analysis entailed use of analytical spreadsheets, excel spread sheets for crop estimates and triangulation using secondary sources of information.

Introduction (Continued): National Assessment



Introduction (Continued):

Limitations/Constraints:

- ⦿ Limited national capacity to undertake VAA at the moment
- ⦿ Lack of systems for regular collection of vulnerability data (e.g. prices)
- ⦿ Variations in the overall impact of flood water in affected areas within a livelihood zone
- ⦿ Long distances to be covered due to the size of the country and sparse population settlements

Participating agencies:

- ⦿ Government of the Republic of Namibia -MAWF and Nam-VAC
(OMAs –OPM, MRLGHRD & NPC)

National Overview /Context

Macro economic conditions:

- ◉ Deceleration in annual rate of inflation to 4.3% in June 2010.

Socio-economic conditions and poverty indicators:

- ◉ National unemployment estimated at about 37% according to the 2004 LFS.
- ◉ Poverty lines based on monthly NAD per capita stands at 184.56 and 262.45 for severely poor and poor respectively
- ◉ Monthly social pension for elderly and people living with disability increased by about 11%
- ◉ Monthly cash grants for Orphans and Vulnerable Children (OVC)

National overview and context (Continued)

Nutrition status for children under five years of age:

- Wasting (weight for height)-7.5%
- Underweight (weight for age)-16.6%
- Stunting (height for age)- 29%

Health indicators:

Crude mortality:

- Under-5 mortality rate, 60 and 76 deaths per 1,000 live births in urban and rural areas
- Adults- 23 deaths per 1000 for 40-49 years (males) and 12-17 deaths/1000 for 40-49females
- Life expectancy at birth -50 yrs females & 48 yrs males

Source: 2006-National Health and Demographic Survey and 2001 National Population Census

National overview and context (Continued)

HIV and AIDS:

- ◉ National HIV and AIDs prevalence rate is 17.8%

Acute illnesses and disease outbreaks:

- ◉ Measles in 2010

Water and sanitation indicators:

- ◉ 93% of the national population using improved drinking water sources
- ◉ 35% of the national population using improved sanitation facilities

2006-National Demographic and Health Survey

Current Year Hazards and Shocks

Current year hazards:

- ⦿ Flood water conditions
- ⦿ Dry spells
- ⦿ Wild life human conflict (destruction of crops and livestock)
- ⦿ Livestock disease (FMD, RVF & Small stock internal parasites)
- ⦿ Increase of staple food prices in remote rural areas

General impact of the shocks (macro/micro level)

- ⦿ Below average crop harvests in flood and dry spells affected communal areas
- ⦿ Loss of key sources of household cash income

Overview of Food Security and Vulnerability Situation

Availability

- 25% above average national cereal production
- About 40% improvement in cereal production compared with 2008/09 agricultural season.
- National deficit is expected to be covered through commercial imports.

Access

- Limited economic ability to access staple foods due to low incomes and increase of staple food prices
- Limited physical access to formal markets (floods, distance and poor feeder roads in specific areas)
- A combination of high cost and irregular transport services in some remote rural areas

Source: Namibia Crop Prospects and Food Security Situation Report and Nam-VAC Annual VAA reports, July 2010

Over view of response /coping strategies

Normal coping strategies

- ◉ *Sale of livestock*
- ◉ *Switch of expenditure towards purchase of cheaper staple foods*
- ◉ *Borrowing of cash*
- ◉ *In-kind credit (food)*
- ◉ *Kinship support (gifts)*

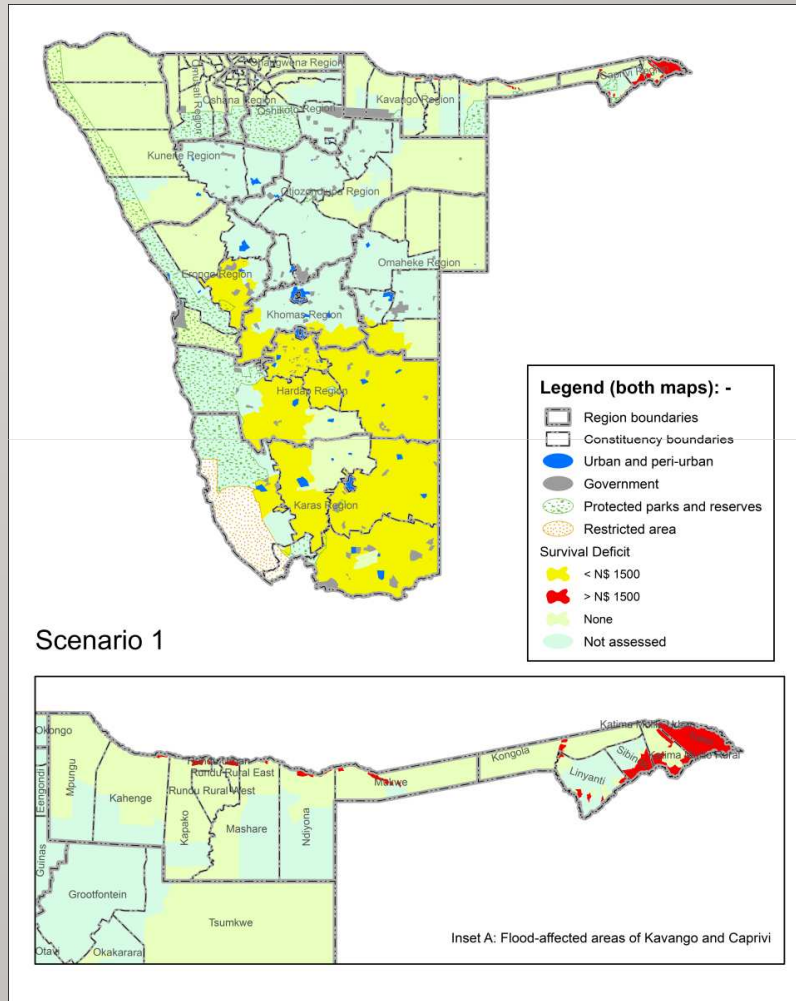
Distress strategies

Increased levels of the following:

- ◉ *Sale of livestock (below normal market prices)*
- ◉ *Bartering (livestock for staple foods)*
- ◉ *Consumption of wild foods*
- ◉ *Cases of rural/urban migration*
- ◉ *Kinship support*
- ◉ *Cases of stock theft*

Outcomes and Scenarios

Scenario 1



1. Staple food prices remain stable, after current year problem analysis of 110- 160% increment in remote rural areas.
2. Monthly social pension for elderly and people living with disability remains the same as current year problem analysis

