

# LVAC 2010 Assessment Findings

Presented by M. Ntela, LVAC Focal Person, DMA



# National Context

## ▶ **Macroeconomic Conditions:**

- ▶ Inflation rate is at **5.1%**
- ▶ GDP Breakdown: Agriculture=17%, Industry=41%, Services=42%
- ▶ Per Capita GDP is at \$642

## ▶ **Nutritional Status:**

- ▶ Stunting : 42% (*National Nutrition Survey 2007*)
- ▶ Underweight Prevalence : 13.8% (*National Nutrition Survey 2007*)

## ▶ **Health:**

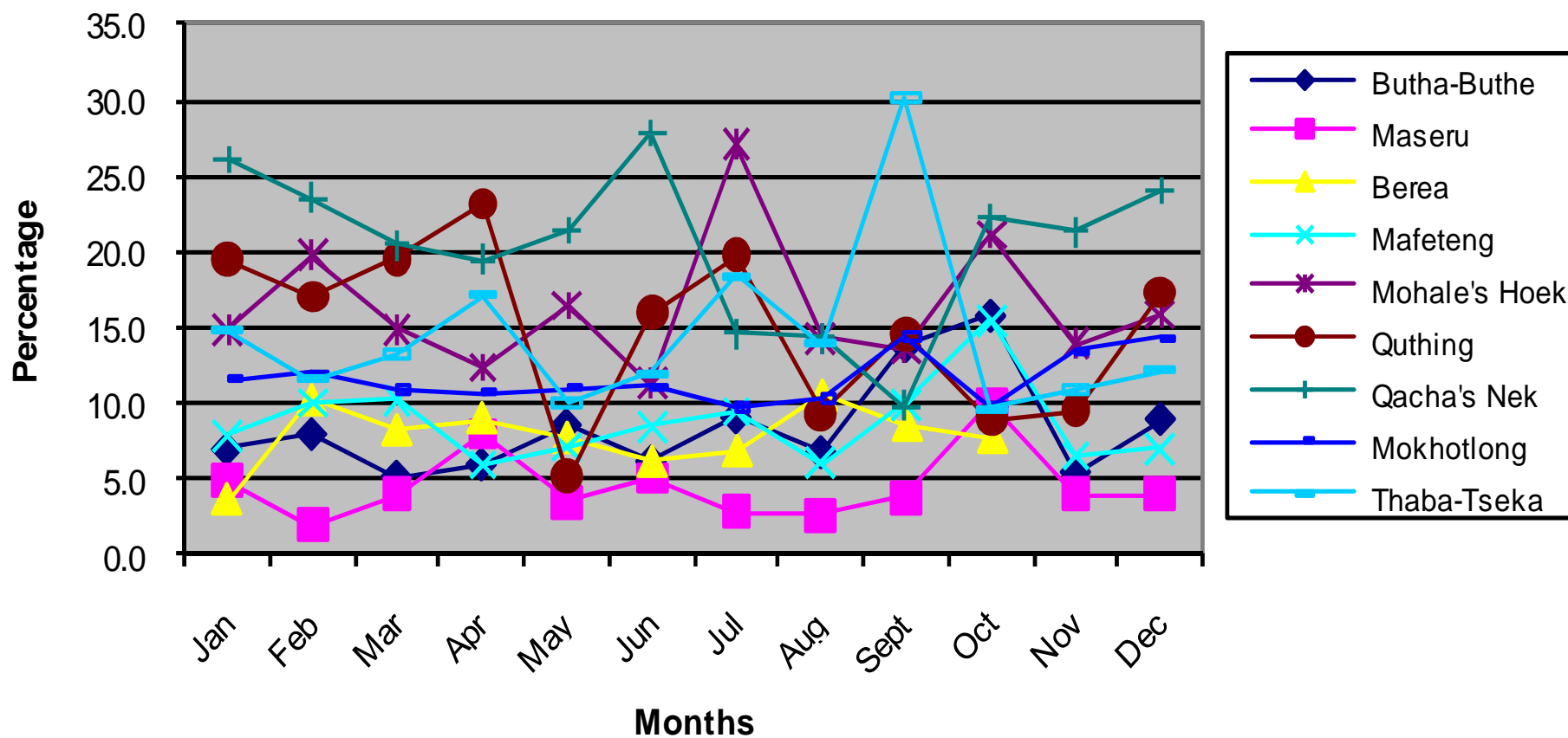
- ▶ HIV/AIDS : 23%
- ▶ *Diseases and Outbreaks* : Reported Red Water Disease, Black Quarter, and Sheep Scab, in the Northern Lowlands and Foothills affected livestock conditions and quality of livestock products (e.g. wool & mohair)

## ▶ **Water and Sanitation:**

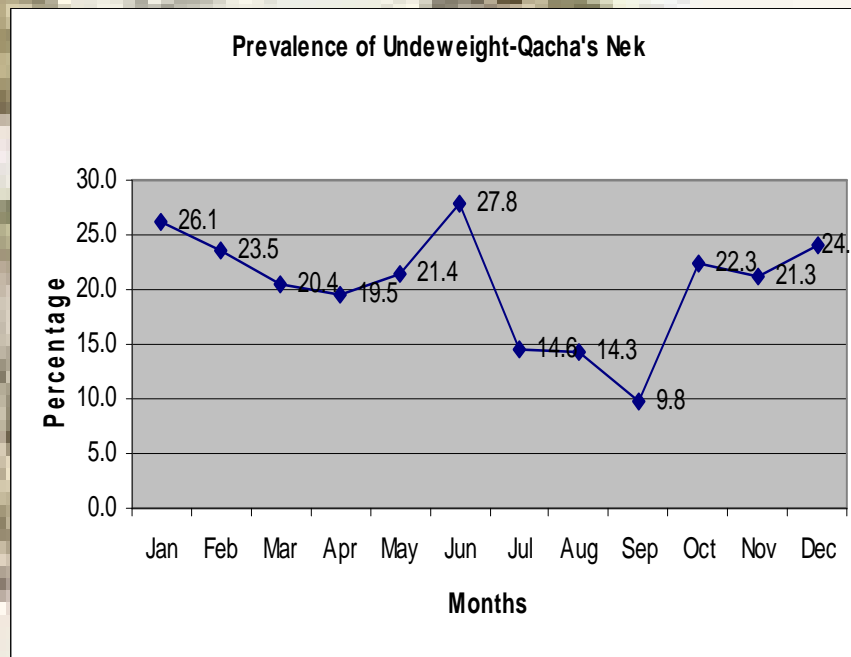
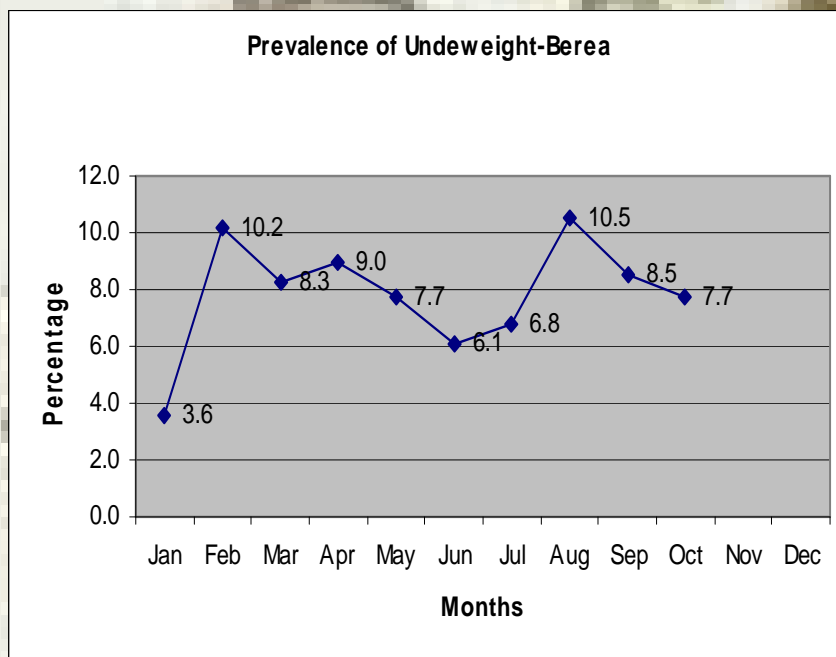
- ▶ Access and availability of clean water : 83% (*not yet updated*)
- ▶ Access to good sanitation : 47% (*not yet updated*)

# Nutrition

## Prevalence of underweight by district



# Comparison of Low and High underweight prevalence Districts (e.g. Berea & Q/Nek)



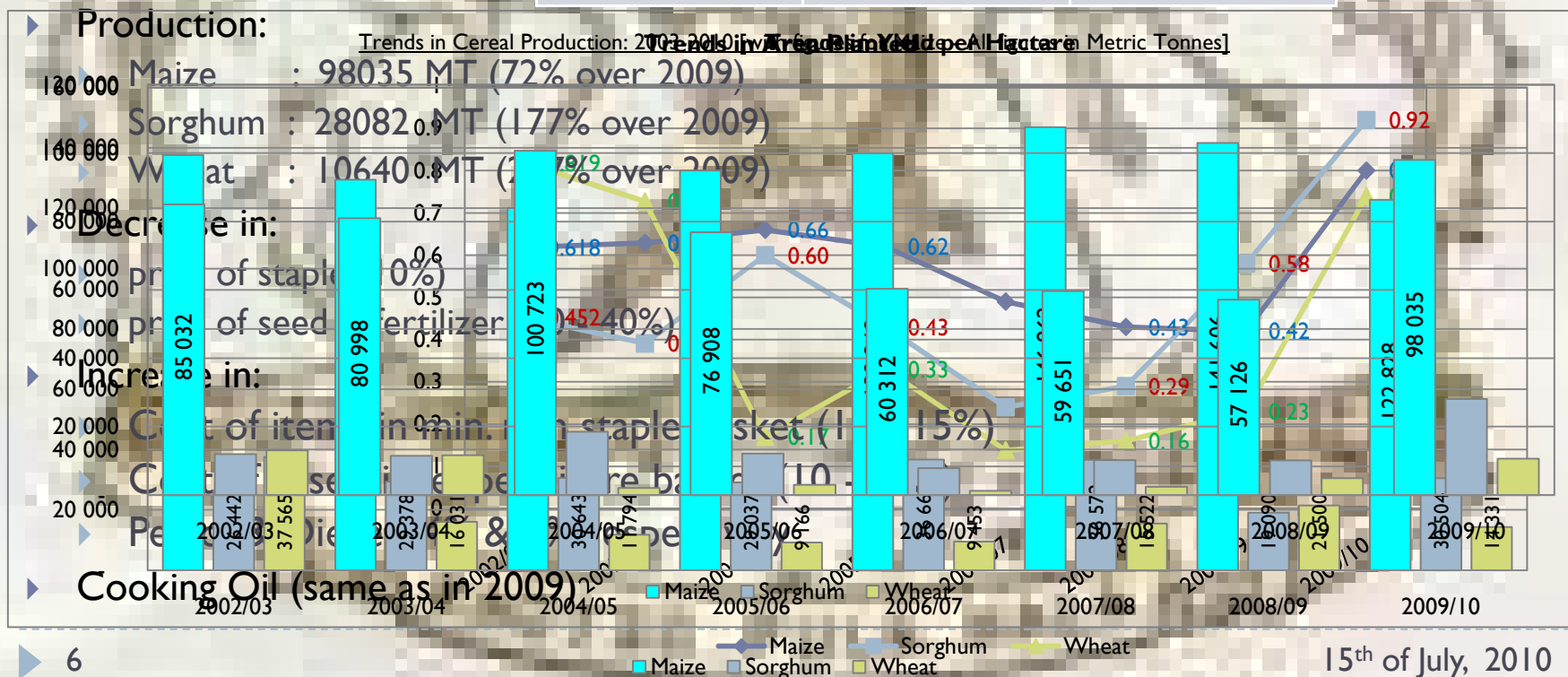
<i>Classification of Malnutrition (WHO 2005)</i>	<b>ACUTE MALNUTRITION (%) WHZ &lt;-2 z-score</b>	<b>CHRONIC MALNUTRITION (%) HAZ &lt;-2 z-score</b>	<b>UNDERWEIGHT (%) WAZ &lt;-2 z-score</b>
<b>ACCEPTABLE</b>	<b>&lt;5</b>	<b>&lt;20</b>	<b>&lt;10</b>
<b>POOR</b>	<b>5-9</b>	<b>20-29</b>	<b>10-15</b>
<b>SERIOUS</b>	<b>10-14</b>	<b>30-39</b>	<b>20-29</b>

# Overview of Current Yr Situation

- ▶ Normal onset of rains (October)
- ▶ But... torrential rains in February - affected proper growth of crops and casual labour opportunities (esp. SLL & SRV)
  - ▶ Note that poor households access up to 40% of annual income from casual labour activities
- ▶ Increase in yield per hectare (ha):

▶ Compared to 2009

Maize	Sorghum	Wheat
90%	60%	200%



## Overview of Response/Coping Strategies

- ▶ Forgoing Essential. Exp to buy food
- ▶ Increase search for casual labour opportunities
- ▶ Increased sale of livestock to buy food
- ▶ Reduction in number of meals
- ▶ Increase in reliance on social support networks

# Outcomes

LZ	FTH	MNT	NLL	PUR	SLL	SRV
Vulnerable populations	VP=22339	VP = 40528	0	VP = 14482, P = 48557	VP = 76785	10708
Sub - Total				48557		
Total						<i>≈ 200,000 people</i>
Maize required to fill deficit (MT)	<b>965</b>	<b>2492</b>	<b>0</b>	<b>3429</b>	<b>6112</b>	<b>421</b>
Total						<i>≈ 13,500 Metric Tonnes of Maize</i>
Cash required to fill deficit (In Maluti)	<b>4827128</b>	<b>14954326</b>	<b>0</b>	<b>19443923</b>	<b>36669495</b>	<b>2106966</b>
Total						<i>≈ 78,000,000 Maluti</i>

## Recommendations...

- ▶ **Food and Expenditure deficits**
  - ▶ Approximately 200,000 people nationwide (Foothills=22,339, Mountains=40,528, Peri-Urban=48,557, Southern Lowlands=76,785, Senqu River Valley=10,708) will need humanitarian assistance in 2010 equivalent to approximately either 13,500 MT of maize or M78,000,000 (using rural prices of maize meal as at May 2010).
  
- ▶ **Crop Production**
  - ▶ It is recommended that appropriate market structures be set up within the country, to enable these farmers to sell their produce at attractive prices that can be offered by the government, as the major millers do not buy from them.
  - ▶ Government should consider maintaining the crop production subsidy programmes in place, and this will increase both production and casual labour opportunities

## Recommendations... (cont.)

- ▶ **Livestock and Livestock products**
  - ▶ The dipping method should be used instead of the currently used vaccination method to control sheep scab.
  - ▶ Farmers should be urged to engage in control of animal parasites to prevent black quarter and red water diseases.
- ▶ **Access to income**
  - ▶ Government should consider scaling – up public works programmes to provide cash for communities (to combat expenditure deficits).
  - ▶ Livelihood diversification options (fruit tree production and processing of the produce) should also be considered.
- ▶ **Nutrition**
  - ▶ It is recommended that a government and development partner should step up the nutrition interventions in the month of September in the mountain districts.

# Recommendations to Policy makers

<b>Policy/Interventions</b>	<b>Goal</b>	<b>In Practice (implementation)</b>	<b>Food Security Implications</b>
<b>Development and Disaster Mitigation Planning</b>	Early Warning Information should be provided timely and consistently	Quarterly monitoring VAC report in addition to the monthly newsletters	Smooth programming of intervention needs by practitioners facilitates preparedness for shocks
<b>Rehabilitation and Recovery</b>	To recover livelihoods after a shock e.g. enabling farmers to plant again after a shock	In form of seed fares and input subsidies through market structures	Increased food and input access for business people and communities
<b>Emergency and Humanitarian responses</b>	To assist affected by offer cash to the needy to improve purchasing power	<ul style="list-style-type: none"> <li>• Through public works programmes for community members e.g. Land reclamation activities for students and the public</li> </ul>	Access to food and essential goods and services enhanced
<b>Safety Nets</b>	To assist the most vulnerable to maintain their livelihoods in the plight of the HIV & AIDS pandemic	<ul style="list-style-type: none"> <li>•OVC grants</li> <li>•WFP rations for the vulnerable chronically III</li> <li>•OAP</li> <li>•Other initiatives e.g Global fund, civil society</li> </ul>	As lives are lost children are orphaned and these safety nets help protect their livelihoods, and also give support to the elderly thereby reducing the burden on the children.

# End of Presentation.

▶ Thank you!

▶ Likhomo!