



SADC VAA DISSEMINATION FORUM

Gaborone, Botswana 30 July 2010

Overview of the Food Insecurity and Vulnerability in the SADC
Region

Cresta Lodge, Gaborone - Botswana

Introduction

▶ **Objectives:**

➤ *Share and disseminate information on the national and regional vulnerability assessment committee assessments for the 2010/11 consumption year –*

- To disseminate identified threats and opportunities for food security and vulnerability during the 2010/11 consumption year
- To highlight the depth and levels of food insecurity and vulnerability in the Region for the 2010/11
- To discuss and endorse actionable recommendations to address food insecurity and vulnerability in the Region.

Factors causing Food Insecurity and Vulnerability

▶ **Rainfall**

- ▶ Normal rainfall in most parts of the Region
- ▶ Excessive rains in some parts of the Region (e.g. Zambia, DRC)
- ▶ Erratic/Dry-spells : Botswana, Southern Malawi, extreme southern Zambia, Namibia, East and Western Cape South Africa, lowlands of Swaziland, and Central Tanzania .
- ▶ Prolonged Dry spells: southern and parts of central Mozambique and Southern Zimbabwe

▶ **Floods**

- ▶ Northern parts of Namibia, North Western part of Botswana, South Africa, lowlands of Zambia, Central Zone of Mozambique and northern coast of Tanzania

▶ **Prices**

- ▶ High price of fuel across the Region
- ▶ Staple food price increases in Mozambique and Angola
- ▶ High prices of agricultural inputs (fertilizer and seeds)

Factors causing Food Insecurity and Vulnerability continued...

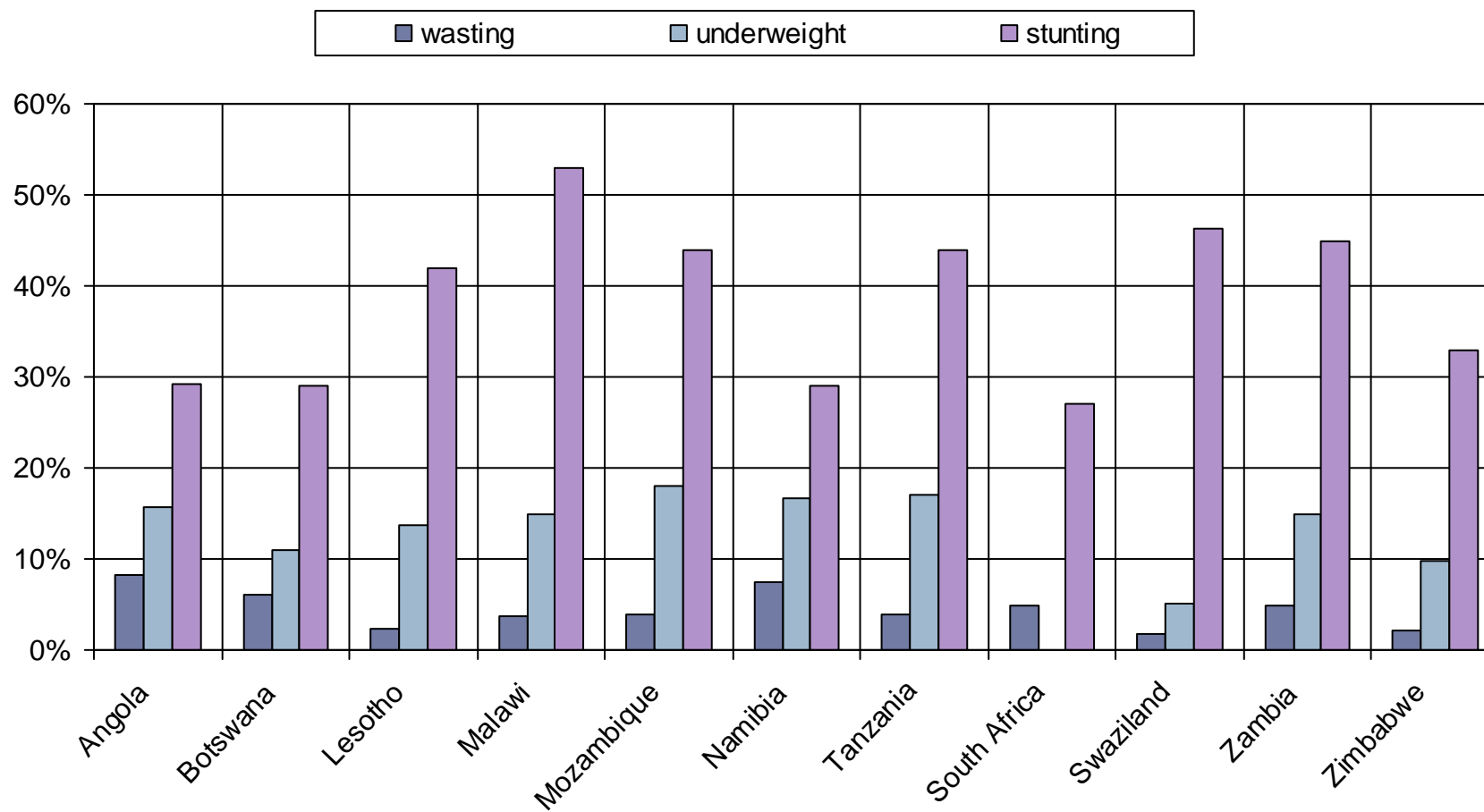
▶ Access to income

- ▶ Increased unemployment and reduced casual labour opportunities reported across the region
- ▶ Wage rates not keeping up with higher cost of living
- ▶ Shortage and high cost of labour (e.g. Commercial Sector Zimbabwe)
- ▶ Poor market infrastructure
- ▶ Cash crop commodity price decreases (e.g. cotton prices in Malawi)

Other Shocks

- ▶ Civil unrest in eastern and central DRC
- ▶ Persistent high rates of unemployment across region
- ▶ Although decreasing, HIV and AIDS prevalence remains high across the Region
- ▶ Outbreak of livestock diseases in Namibia, Botswana , Lesotho , Angola.
- ▶ Wildlife and human conflict in Namibia, Tanzania, Botswana and Angola

High prevalence of malnutrition in the Region



► Sources: VAC presentations, SOWC (childinfo.org)

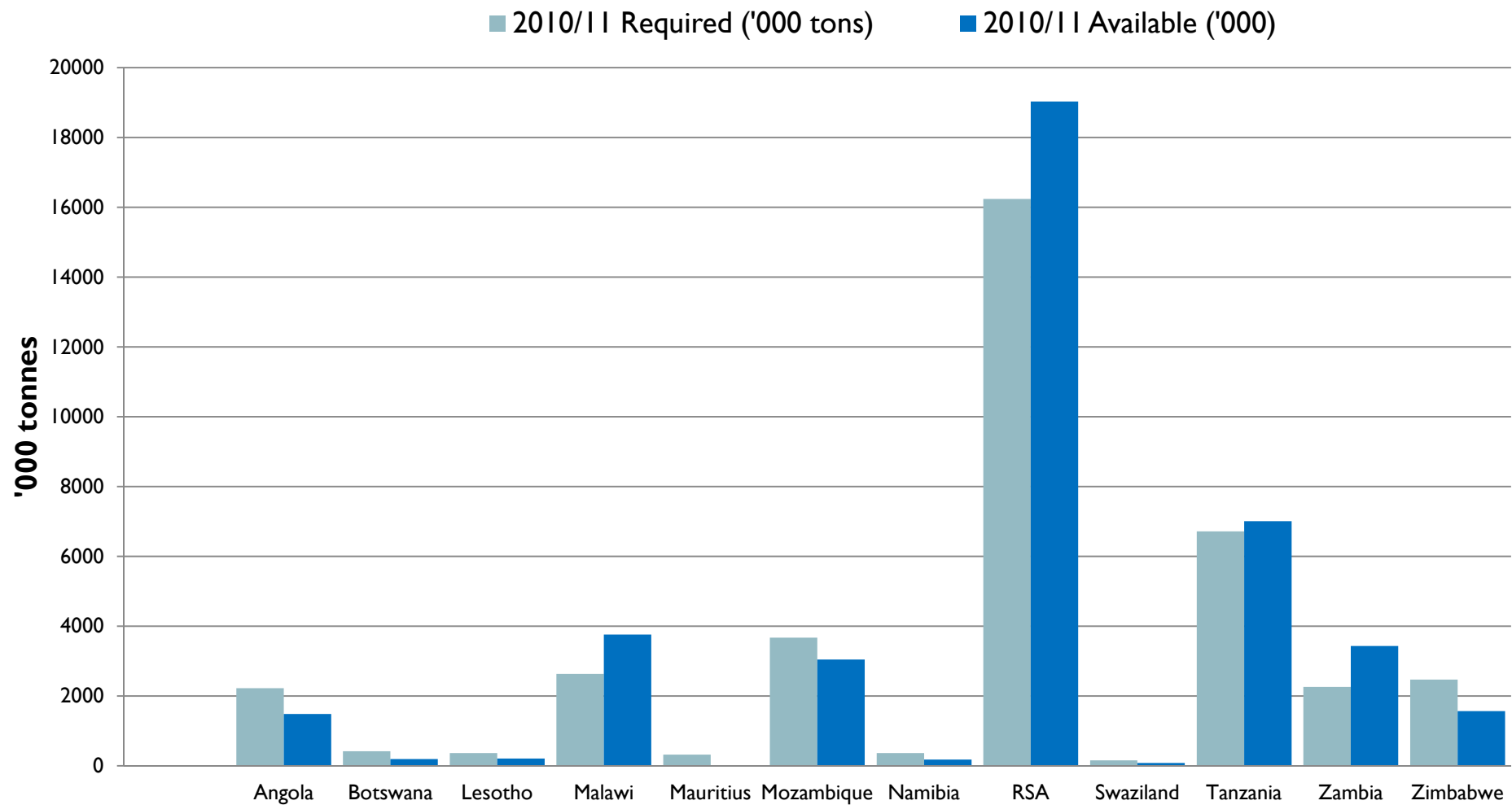
Regional Cereal Balance Sheet

2010/11 Cereal Requirement, Supply and 2010 Forecast Production

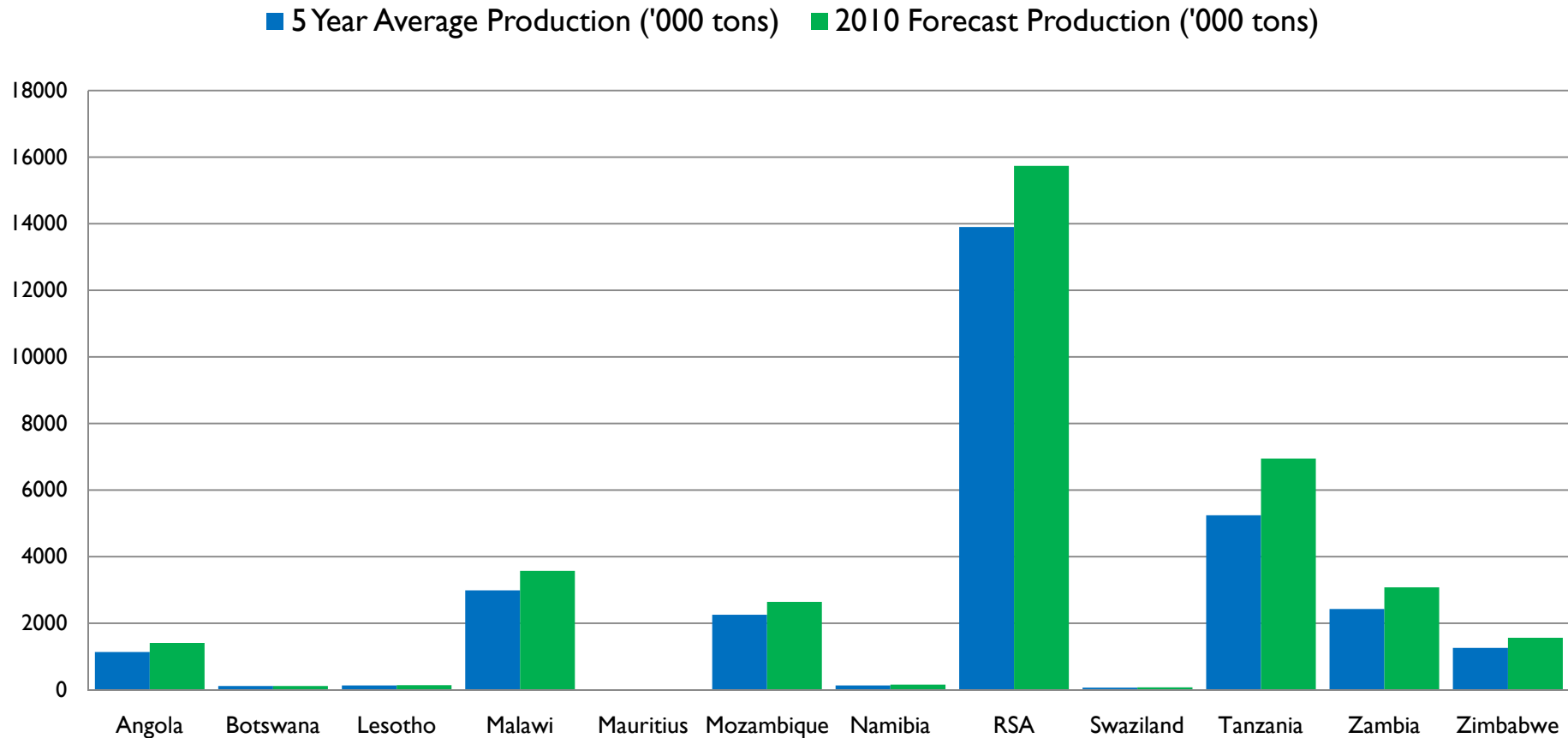
	2010/11 Required (^{'000} tons)	2010/11 Available (^{'000} tons)	2010/11 Expected Deficit (^{'000} tons)	2009 Production (^{'000} tons)	2010 Forecast Production (^{'000} tons)	2010 Prodt.% Change over 2009	5 - Year Average	
							Productio n (^{'000} tons)	2010 % Change
Angola*	2.226	1.483	-743	1.290	1.405	9%	761	85%
Botswana	419	194	-225	65	109	68%	34	224%
Lesotho	369	207	-162	86	137	59%	100	37%
Malawi	2.638	3.761	1.123	3.834	3.572	-7%	2.904	23%
Mauritius	318	7	-311	2	2	0%	2	0%
Mozambique	3.676	3.087	-589	2.526	2.641	5%	2.195	20%
Namibia	368	181	-187	111	155	40%	125	24%
South Africa	16.238	19.033	2.795	15.699	15.731	0%	12.385	27%
Swaziland	158	84	-74	71	75	6%	63	19%
Tanzania	7.191	7.396	205	5.265	7.095	35%	5.308	34%
Zambia	2.263	3.433	1.170	2.182	3.078	41%	1.567	96%
Zimbabwe	2.473	1.552	-921	1.568	1.548	-1%	1.176	32%
Total	38.337	40.418	2.081	32.699	35.548	9%	26.619	34%

* Forecast from FANR REWS based on rainfall. Input supply and past production.

2010/11 Cereal Breakdown by Country



2010/11 Production Compared to 5 Year Average



Assessment Outcomes

Table: Trend in Food Insecure Population in the Region

Country [‡]	2003/04	2004/05	2005/06	2006/07	2007/08	2008/09	2009/10	2010/2011
Lesotho	270,000	948,300	541,000	245,700	553,000	353,000	450,000	200,000
Malawi	400,000	1,340,000	5,055,000	833,000	63,200	673,498	147,492	1,061,000
Mozambique	659,000	659,000	801,655	240,000	520,000	302,700	281,300	450,000
Namibia	n/a	n/a	n/a	n/a	n/a	n/a	224,795	106,297
Swaziland	217,000	600,400	634,400	465,900	345,000	238,600	262,000	160,989
Tanzania	844,333	686,356	848,019	995,433	581,974	780,416	420,000	717,896*
Zambia	60,000	39,300	1,232,700	380,537	440,866	444,624	110,000	53,629
Zimbabwe	5,422,600	2,300,000	2,884,800	1,392,500	4,100,000	5,100,000	1,400,000	1,287,937
TOTAL	7,872,933	6,573,356	11,997,574	4,553,070	6,604,040	7,892,838	3,295,587	4,037,748

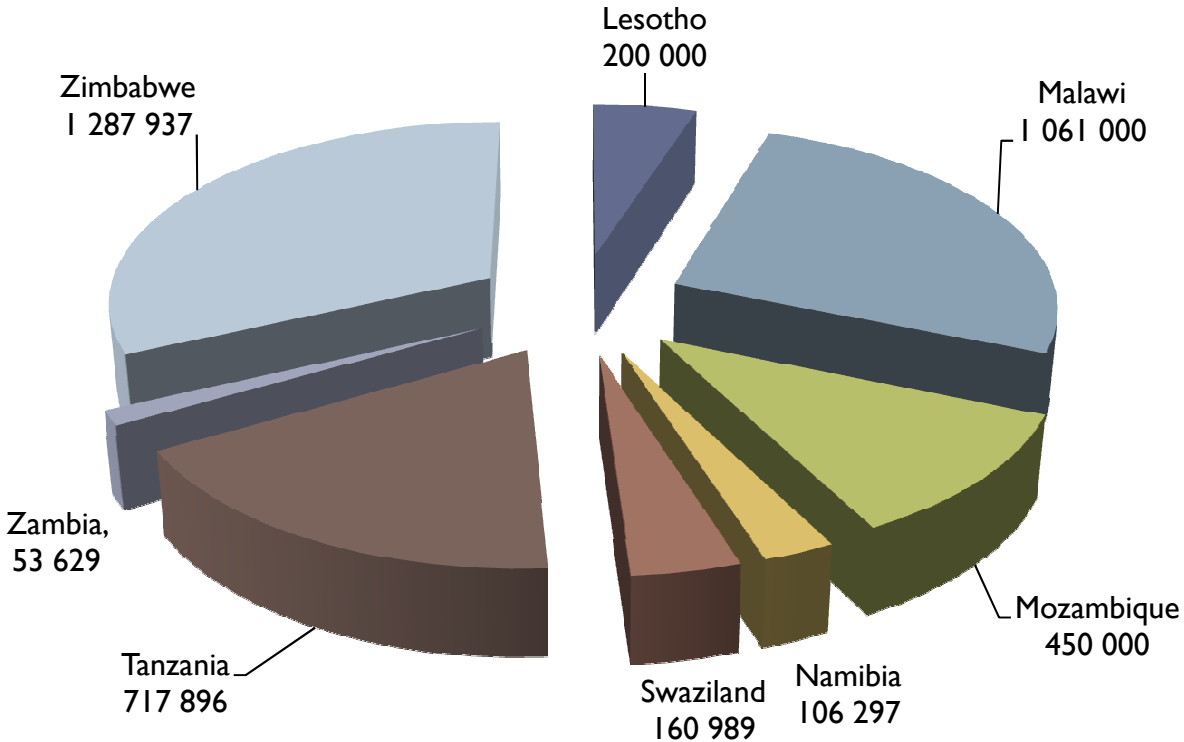
Source: SADC FANR Directorate - Member States Vulnerability Assessment, 2010.

[‡]Data is only available from countries with Vulnerability Assessment Committees.

* Assessment was done in February 2010, situation has since improved and next assessment will be conducted in October 2010.

Projected 2010/11 Food Insecure Population by Country

Total Food Insecure Population: 4,037,748

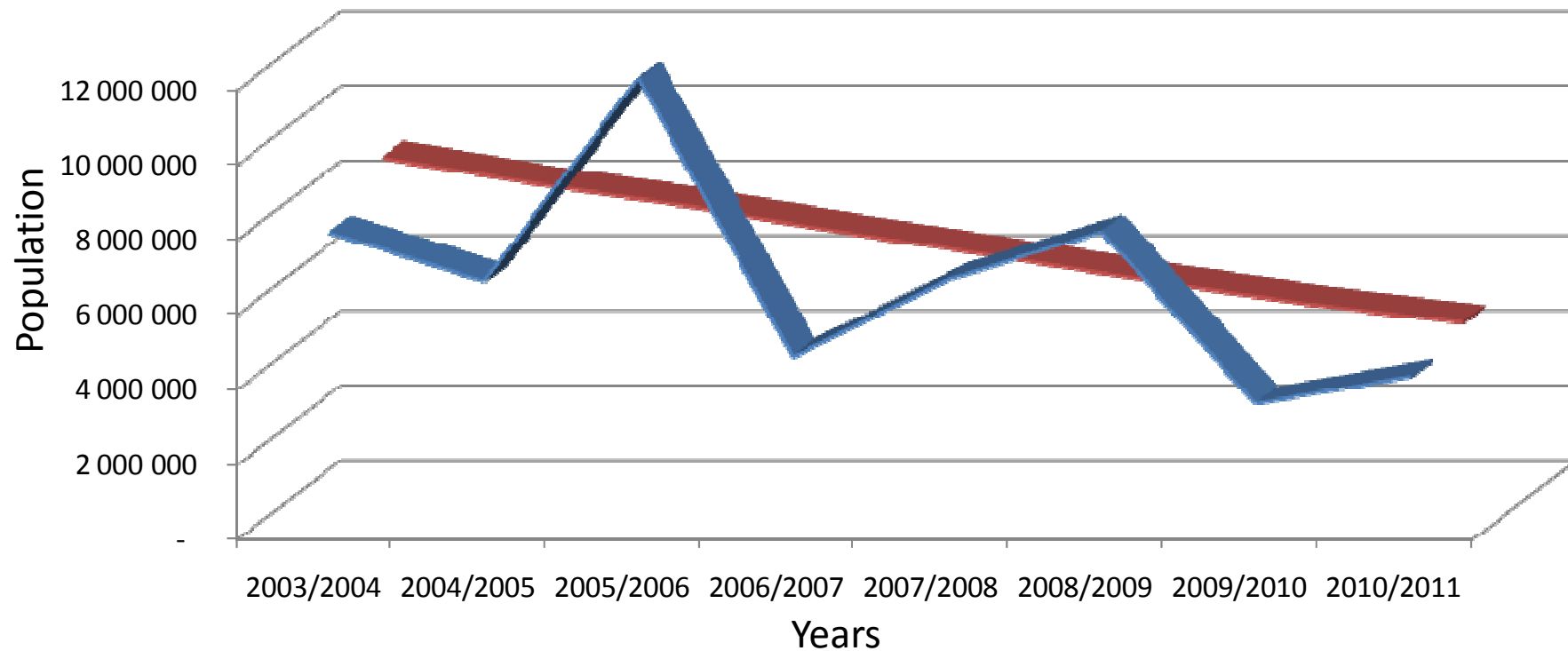


Country	Percentage of Total Country Population
Lesotho	9.4%
Malawi	7.4%
Mozambique	2.1%
Namibia	5.0%
Swaziland	14.3%
Tanzania	1.7%
Zambia	0.5%
Zimbabwe	11.4%

Data Source: National VACs

Trend in Food Insecure Population from 2003/04 to 2010/11

➤ The general trend at regional level is declining



Data Source: National VACs

Overview of Household Response Mechanisms

- ▶ Forgoing non-essential expenditures in order to purchase food
- ▶ Increased search for casual labour opportunities
- ▶ Increased sale of livelihood assets (e.g. livestock) to buy food and other essential items
- ▶ Increased rural to urban migration
- ▶ Reduction in number of meals
- ▶ Increase in demand on social support networks

Main Conclusions

- ▶ Despite good harvests:
 - ▶ number of people requiring humanitarian assistance has increased from last year
 - ▶ high rates of malnutrition (stunting) still persist in a number of countries.
- ▶ Access issues for the very-poor and poor remain persistent (food and non-food) – indications of chronic vulnerability linked to poverty
- ▶ Positive contribution of targeted input and output subsidies programmes in the region
- ▶ Ongoing concerns on markets for surplus countries (internal and cross border)
- ▶ High prevalence of malnutrition rates

Main Recommendations

1. Increased social protection and safety nets measures such as public works programmes and cash/food transfers
2. Enhance infrastructure development for improved market access e.g. transport, storage and communication to improve household income
3. Continue support to targeted input and output subsidies programmes
4. Promote health and nutritional education and support.

Challenges --VAA Processes

- ▶ Continued VAC institutionalization problems across the region
- ▶ Capacity and resource constraints – lack and inadequate assessments
- ▶ Utilisation of VAA information remains a challenge
 - ▶ Response
 - ▶ Policy
- ▶ More work needed in understanding increasing levels of urban food insecurity and vulnerability

THANK YOU

OBLIGADO

MERCI