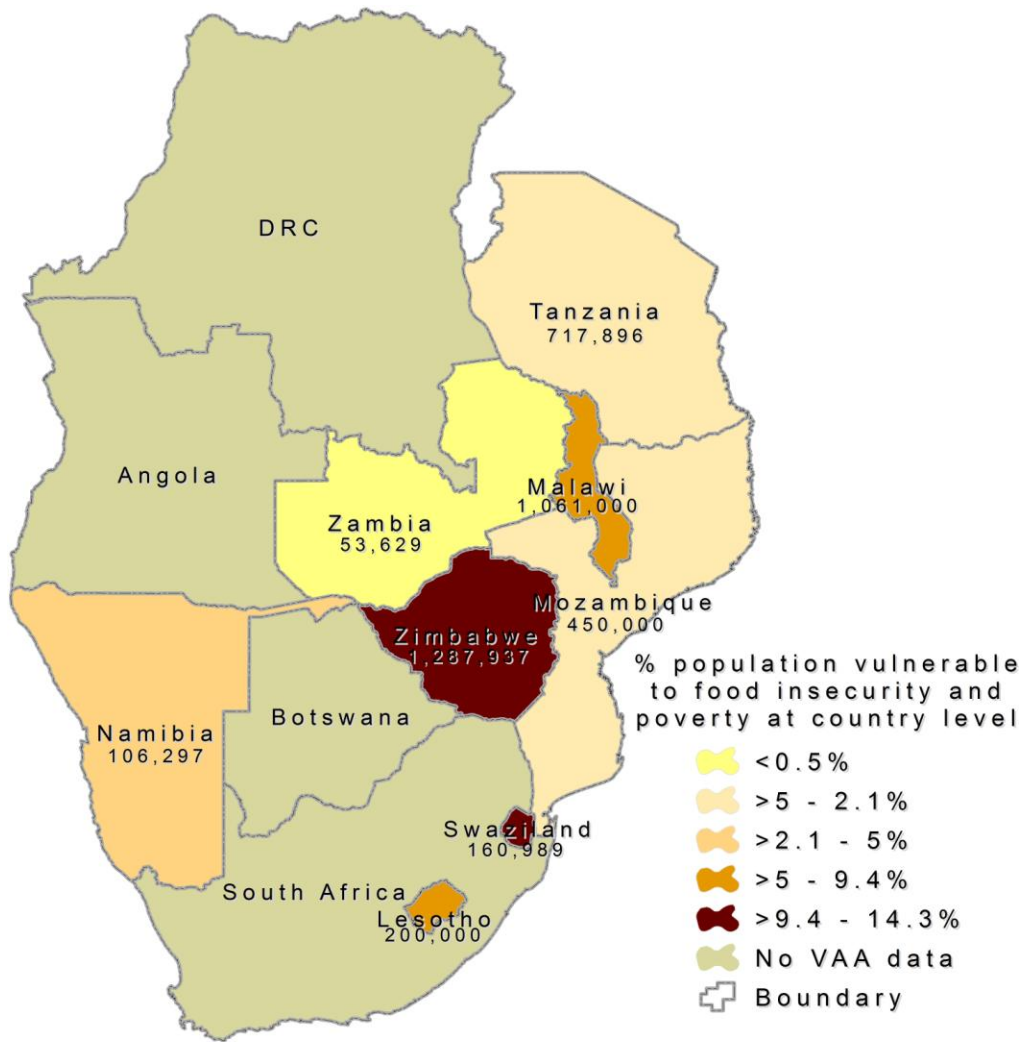




# State of Vulnerability to Food Insecurity and Poverty in the Southern African Development Community (SADC)

April 2010 to March 2011



(c) All rights reserved, SADC RVAA Programme 2010

SADC Regional Vulnerability Assessment  
and Analysis Programme  
Gaborone, Botswana

August 2010

© Copyright SADC, 2010. All Rights Reserved.

The information contained in this publication may be freely used and copied for non-commercial purposes, provided that any information reproduced elsewhere be accompanied by an acknowledgement of SADC as the source.

The SADC name and emblem are the exclusive property of Southern African Development Community. They are protected under international law. Unauthorised use is prohibited. They may not be copied or reproduced in any way without the prior written permission of SADC. Requests for permission should be sent to the Executive Secretary of the SADC Secretariat.

Further usage for details of this publication may be sourced from the SADC Secretariat.

Address:

SADC House,  
Private Bag 0095,  
Gaborone,  
Botswana.

Telephone: +267 3951863

Fax: +267 3972848

Email: [registry@sadc.int](mailto:registry@sadc.int)

Website: [www.sadc.int](http://www.sadc.int)

## TABLE OF CONTENTS

LIST OF ACRONYMS.....	ii
EXECUTIVE SUMMARY .....	iii
1.0 INTRODUCTION.....	1
1.1 Background .....	1
1.2 Objectives of the 2010 RVAA Dissemination Forum .....	2
1.3 Approaches and methods .....	2
2.0 REGIONAL OVERVIEW.....	3
2.1 Social economic situation.....	3
2.2 Summary of Hazards/Shocks and factors affecting vulnerability to food insecurity/poverty .....	3
2.2.1 Climatic/weather conditions .....	3
2.2.2 Crop production.....	4
2.2.3 Low agricultural commodity prices .....	5
2.2.4 Livestock diseases .....	5
2.2.5 HIV and AIDS.....	6
2.2.6 Unemployment and low wage rates.....	6
2.2.7 Inflation.....	6
2.2.8 Human and animal conflict .....	6
2.2.9 Civil unrest .....	6
2.3 Summary of Vulnerability Assessments and Analysis Results .....	7
2.3.1 Vulnerability to food insecurity and poverty .....	7
2.3.2 Malnutrition .....	8
2.4 Response/Coping Strategies .....	9
2.4.1 Switching expenditure .....	9
2.4.2 Casual labour.....	9
2.4.3 Sale of assets .....	10
2.4.4 Rural to urban migration .....	10
2.4.5 Reduction in number of meals .....	10
2.4.6 Increased in reliance on social support programmes and networks .....	10
3.0 COUNTRY HIGHLIGHTS .....	11
3.1 Angola .....	11
3.2 Botswana.....	11
3.3 Democratic Republic of Congo (DRC).....	12
3.4 Lesotho .....	12
3.5 Malawi.....	12
3.6 Mozambique .....	13
3.7 Namibia .....	14
3.8 South Africa .....	14
3.9 Swaziland.....	15
3.10 The United Republic of Tanzania .....	15
3.11 Zambia.....	16
3.12 Zimbabwe .....	17
4.0 MAIN CONCLUSIONS AND RECOMMENDATIONS.....	18
4.1 Key conclusions.....	18
4.2 Recommendations .....	18
5.0 LIST OF PARTICIPANTS.....	20

## LIST OF ACRONYMS

CFSAM	Crop and Food Security Assessment Mission (WFP and FAO)
DFID	Department for International Development
EC	European Commission
FAO	Food and Agriculture Organisation
FANR	Food Agriculture and Natural Resources Directorate
GDP	Gross Domestic Product
ICP	International Cooperating Partners
IMF	International Monetary Fund
MoF	Ministry of Finance
NHDS	National Health and Demographic Survey
NGO	Non-Governmental Organization
NNS	National Nutrition Survey
NVAC	National Vulnerability Assessment Committee
MT	Metric Ton
NVAC	National Vulnerability Assessment Committee
RHVP	Regional Hunger and Vulnerability Programme
RVAC	Regional Vulnerability Assessment Committee
SACU	Southern Africa Customs Union
SADC	Southern Africa Development Community
SARCOF	Southern Africa Regional Climate Outlook Forum
SFP	School Feeding Programme
UNICEF	United Nations Children's Fund
USAID	United States Agency for International Development
VAA	Vulnerability assessment and analysis
WFP	World Food Programme

## EXECUTIVE SUMMARY

Many countries in SADC experienced increases in cereal production in 2010 compared to 2009, except for Malawi and Zimbabwe. As a result, the overall cereal production in SADC increased by 12 percent from 31.825 million MT in 2009 to 35.548 MT in 2010. Despite many countries in SADC recording increases in cereal production, the majority of them still ended up with cereal requirement deficits for the 2010/2011 consumption period (i.e. April 2010 to March 2011), implying that the increases in cereal production were not enough to meet domestic cereal demand in the 2010/2011 consumption period in these countries. At a Regional level however, there is a cereal surplus of about 2.3 million metric tons during the 2010/11 consumption period due to surpluses recorded in South Africa, Malawi, Tanzania and Zambia. The increase in cereal production recorded in many countries in SADC this year, can be attributed to the generally good rainfall season and increased use of improved agricultural inputs such as seed and fertilizer. A number of countries in SADC implemented different types of programmes such as targeted input and input subsidy programmes that resulted in many farmers accessing the much needed agricultural inputs.

Despite the cereal surplus at regional level, the number of people requiring food and non-food assistance in SADC has increased to an estimated 4.04 million people from last year's estimate of 3.3 million people. Factors that have contributed to the rise in the number of the vulnerable population include erratic rainfall and dry spells; floods; high prices of fuel; high staple food prices; high prices of agricultural inputs; low incomes; low prices for some of the cash crops; civil unrest in eastern and central DRC; outbreak of livestock diseases and wildlife and human conflict in Namibia, Tanzania, Botswana and Angola.

At a national level, all countries in SADC have experienced a decrease in their populations vulnerable to food insecurity and poverty, compared to last year, except for Malawi and Mozambique where localized erratic rainfall conditions induced substantial reductions in crop production. Generally, there has been a declining trend in the populations vulnerable to food insecurity and poverty in SADC. However, despite these achievements, food insecurity, poverty and malnutrition remain relatively high and a big challenge to socio-economic development in SADC.

A number of recommendations were made to address the identified problems related to vulnerability to food insecurity and poverty in SADC. These range from short term emergency interventions such as food aid and short term social transfers to long term programme interventions including infrastructure development, technology development etc as outlined in the report.

## 1.0 INTRODUCTION

### 1.1 Background

Since 2002, the SADC RVAA Programme which comprises a multi-agency Regional Vulnerability Assessment Committee (RVAC) and the National Vulnerability Assessment Committees (NVAC) has been conducting a series of vulnerability assessments in SADC. The assessments mainly use livelihood-based approaches to vulnerability assessments, which among other things entail assessing the impact of availability or lack of the various sources of food and income, as well as an analysis on expenditure patterns of rural households on their livelihoods. Additional information collected and analysed in these assessments include macroeconomic conditions, rainfall patterns, crop and livestock production levels, health, nutrition, water and sanitation status of selected areas of a country.

After the vulnerability assessments, the SADC RVAC organizes annual regional information dissemination forums for Member States to share information and experiences related to food security and vulnerability situation in SADC. The main objective of the Regional Annual Vulnerability Assessment and Analysis (VAA) Dissemination Forums is to allow National Vulnerability Assessment Committees (NVACs) to highlight the findings of their food security and vulnerability assessments and analysis, by indicating population groups and areas vulnerable to food insecurity and poverty, the underlying causes and other multi-sectoral issues impacting on household vulnerability to food security and poverty.

This year's dissemination of the vulnerability assessment and analysis findings was preceded by VAA technical meeting which took place in Windhoek, Namibia from 15 to 16 July and was attended by senior NVACs technicians from all of the SADC Member States excluding Mauritius, Seychelles and Madagascar. RVAC members (WFP, OCHA, FEWS NET, etc), and other relevant stakeholders also attended. The aim of the technical meeting was to discuss and finalise country vulnerability assessment reports which contributed to the production of a SADC Regional Synthesis Report entitled, "*The state of vulnerability to food insecurity and poverty in the SADC Region*".

The RVAA Dissemination Forum took place in Gaborone, Botswana on 30<sup>th</sup> July 2010 and was attended by Senior Government officials at Principal Secretary and Director levels from Member States. The objective of the Forum was to appraise the Senior officials on the levels of vulnerability to food insecurity and poverty in Region and to request them to endorse the findings and recommendations.

This report provides an overview of the depth and extent of vulnerability to food insecurity and poverty in SADC for the 2010/11 marketing season. It is important to note that some of the countries in SADC are not included due to lack of data or information. These include Mauritius, Madagascar, Seychelles and in some cases DRC and Angola.

## **1.2 Objectives of the 2010 RVAA Dissemination Forum**

The specific objectives of the 2010 Dissemination Forum were:

- To share and disseminate the results of the national vulnerability assessments for the 2010/11 consumption period.
- To identify threats and opportunities to food security and poverty during the 2010/11 consumption year
- To profile the depth and levels of food insecurity and poverty in SADC for the 2010/11 season
- To develop actionable recommendations for consideration by the SADC and other Policy Makers

## **1.3 Approaches and methods**

The National Vulnerability Assessment Committees (NVACs) used livelihood based approaches to undertake the 2010 assessment and data collection methods included qualitative and quantitative methods such as household surveys, key informant interviews, rapid participatory approaches and others. The design of the assessment methodologies, geographical coverage and depth of analysis by the National Vulnerability Assessment Committees is largely dependent on the technical capacity within the NVACs; availability of external technical support sourced; and financial resources and time available to carry out such assessments.

The NVACs also used secondary data during the assessments which included information from previous years' assessment reports, population figures from the National Statistics offices, baseline livelihood data from NVACs, crop and livestock production estimates, reports by government and various development partners in their respective countries.

The word 'vulnerability' is very broad and should never really be used on its own; it should always include the phrase 'to something', where the 'something' is an undesirable outcome, such as hunger, poverty, sickness, etc. By qualifying our vulnerability this way, we can then focus our attention on the outcomes that concern us most. In the SADC, food insecurity and poverty are two major issues that governments are very concerned with and are therefore, the major focus of VAA work in SADC. Food insecurity and poverty in SADC are very much interrelated to the extent that it is almost impossible to talk about one without the other. This analysis looks at households' ability or inability to meet all their minimum food requirements (vulnerability to food insecurity) and the ability or inability to meet their minimum livelihoods protection needs (including minimum food requirement plus additional items to meet what is considered the minimum standard of living) as a proxy for vulnerability to poverty.

## 2.0 REGIONAL OVERVIEW

### 2.1 Social economic situation

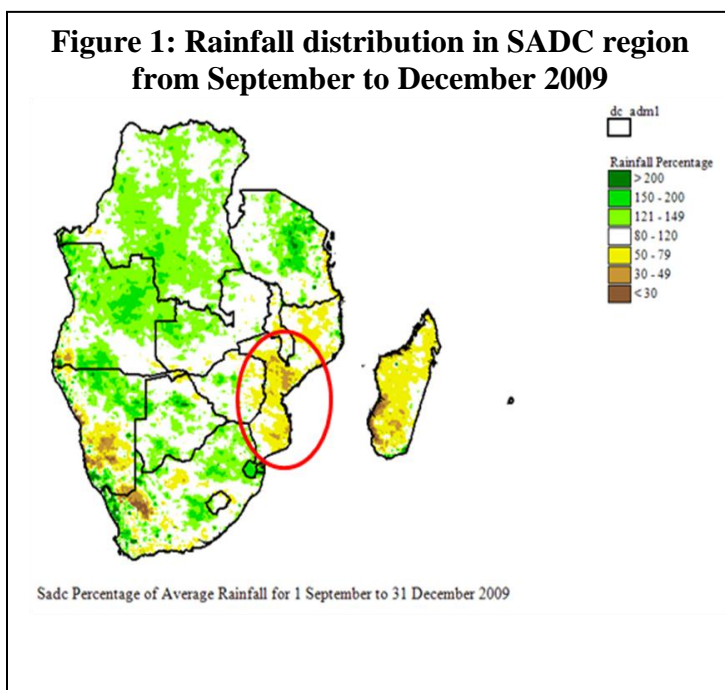
As result of the collapse of global trade and disruptions in global financial markets, economic growth in SADC was significantly sluggish during 2009. However, economic growth is expected to rebound as the global recovery gets under way during the 2010. The effect of the global recession was initially felt most strongly in those economies more highly integrated into global financial markets, such as South Africa, Angola, Botswana, Namibia and others. However the recent improvements in financial conditions and commodity prices will help these economies to recover during the 2010 period. For example, economies like Angola had a negative growth of 0.6 percent in 2009 while South Africa economy contracted by 1.8 percent and Botswana had a negative growth of 4 percent in the same year. Inflation pressures during the 2010 have eased down as a result of 12 percent increased food production in SADC.

### 2.2 Summary of Hazards/Shocks and factors affecting vulnerability to food insecurity/poverty

#### 2.2.1 Climatic/weather conditions

SADC has not been spared from the impacts of climate change such as frequent droughts and floods. However, the 2009/10 rainfall season was generally favourable for crop

production except for a few areas such as southern parts of Malawi, parts of central and southern Mozambique, southern Zambia, eastern Zimbabwe and parts of South Africa which experienced dry spells. Some of the areas such as the low-lying areas of Angola, Namibia and South Africa experienced floods during the same time. Figure 1 shows the rainfall distribution in SADC during the first half (September to December) of the rainfall season. The scale ranges from brown to green representing below normal to above normal rains, respectively. As shown in the figure, most parts of SADC received normal to above normal rains.



## 2.2.2 Crop production

The main staple food in SADC is cereals, particularly maize. However cereals are also important as a source of income, especially for the poor households who cannot afford to grow some of the cash crops like tobacco and cotton which require a lot of inputs. As a result, considerable attention is paid to cereal production in vulnerability assessments and analysis. During the period under review, overall cereal production in SADC increased by 12 percent to 35,548 MT from 31,825 MT last year. The current production also represents a 32 percent increase over the average production for the last 5 years (2005 to 2009). All countries except Malawi (7 percent drop) and Zimbabwe (1 percent drop) experienced increases in cereal production. The highest increase was recorded in Botswana, though not a major cereal producer in SADC, where cereal production more than doubled from 42 MT last year to 109 MT this year. Table 1 shows a comparison of cereal production in the Member States and at Regional level.

Table 1: Regional cereal balance sheet

Country	2010/11 Required* ('000 MT)	2010/11 Available** ('000 MT)	2010/11 Expected Deficit ('000 MT)	2009 Production ('000 MT)	2010 Forecast Production ('000 MT)	2010 Production % change over 2009	5 - Year Average	
							Production ('000 MT)	2010 % Change
Angola*	2 226	1 483	-743	1 290	1 405	9%	868	62%
Botswana	419	194	-225	42	109	160%	34	221%
Lesotho	369	207	-162	86	137	59%	100	37%
Malawi	2 638	3 761	1 123	3 834	3 572	-7%	2 904	23%
Mauritius	318	7	-311	2	2	0%	2	0%
Mozambique	3 521	3 028	-493	2 526	2 641	5%	2 195	20%
Namibia	368	181	-187	111	155	40%	125	24%
South Africa	16 238	19 033	2 795	14 855	15 731	6%	12 507	26%
Swaziland	158	84	-74	71	75	6%	63	19%
Tanzania	7 191	7 396	205	5 265	7 095	35%	5 308	34%
Zambia	2 263	3 433	1 170	2 182	3 078	41%	1 567	96%
Zimbabwe	2 473	1 552	-921	1 561	1 548	-1%	1 176	32%
<b>SADC***</b>	<b>38 182</b>	<b>40 359</b>	<b>2 177</b>	<b>31 825</b>	<b>35 548</b>	<b>12%</b>	<b>26 849</b>	<b>32%</b>

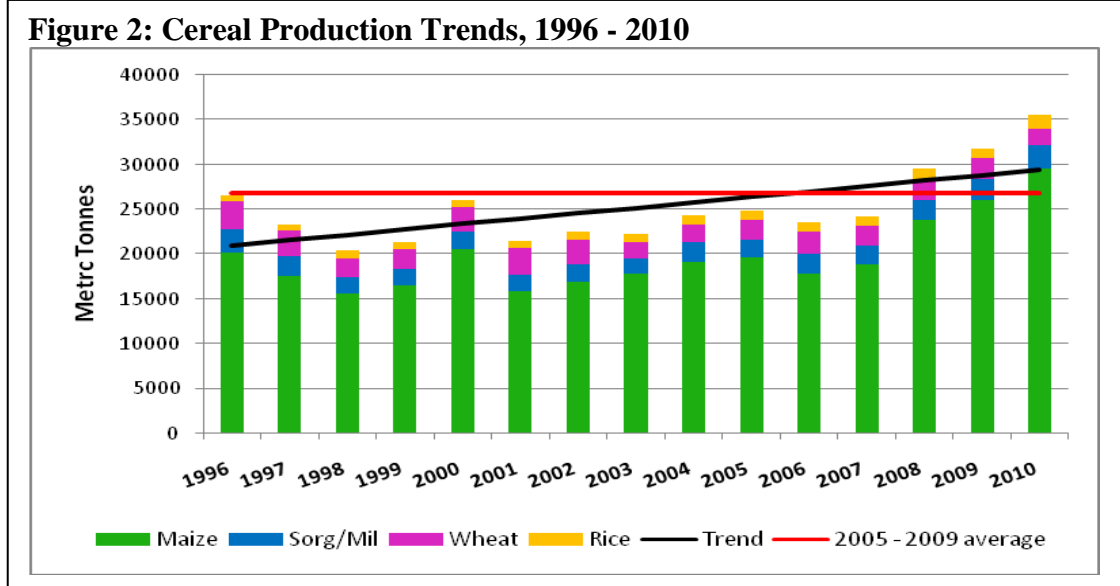
\* Forecast from FANR REWS based on rainfall, input supply and past production.

\*\* Production plus carryover stocks.

\*\*\* SADC (excluding DRC, Madagascar & Seychelles)

Generally favourable rainfall in many parts of SADC (See 2.2.1), and the provision of subsidized inputs to targeted groups has contributed to the increase in cereal production in many countries in SADC. A comparison of cereal production to the average production for the past five years shows that all countries except Mauritius, where production remained almost the same, recorded significant increases ranging from 19 percent in Swaziland to 224 percent in Botswana as shown in figure 2. This trend has significantly contributed to food security and reduction of poverty at national level in SADC.

**Figure 2: Cereal Production Trends, 1996 - 2010**



As a result of the good overall cereal production in SADC, a cereal surplus of 2.177 million MT has recorded in SADC, a significant improvement from a deficit of 0.8 million MT recorded in 2009/10 marketing year. However, despite the increases in cereal production at regional level, food availability remains below national requirement in some Member States with the exception of Malawi, South Africa, Zambia and United Republic of Tanzania. Some Member States expect cereal deficits ranging from 74,000 MT in Swaziland to 905,000 MT in Zimbabwe.

### 2.2.3 Low agricultural commodity prices

Low prices for agricultural commodities in some Member States were cited as contributing to low farmers' household incomes and poverty in those countries. Decreases in cotton prices in Malawi for example, had significant negative impact on food security and household incomes in the cotton growing areas of the country.

### 2.2.4 Livestock diseases

Livestock diseases such as red water, black quarter, rift valley fever, foot and mouth and sheep scrub were recorded in some parts of SADC during the 2009/10 season. For example, in Lesotho red water disease, black quarter and sheep scrub attacked livestock more especially in the Northern Lowlands and Foothills livelihood zones. Livestock diseases were also recorded in Cunene region of Angola as well as Namibia and Botswana. These diseases affected the livestock conditions and livestock products which in turn affected income levels of households due to poor quality and consequently low prices.

### **2.2.5 HIV and AIDS**

HIV and AIDS prevalence rates seem to have stabilized and begin to decline in most countries in SADC, except for countries like Swaziland. Nonetheless, the prevailing levels of HIV and AIDS are still high compared to other regions in the world. HIV and AIDS is contributing to high mortality rates in women and children; and high expenditures in the health sectors. The high HIV and AIDS prevalence is exacerbating food insecurity and poverty levels in SADC through reduced productive capacity as productive members of households become chronically ill or die because of the disease.

### **2.2.6 Unemployment and low wage rates**

High rates of unemployment and reduced casual labour opportunities were reported in most countries in SADC due to closure of major companies and the economic meltdown. For example, in Swaziland two big companies closed down during the 2009 season making many people redundant. In some instances, wages are not keeping up with the high cost of living. In some countries, such as Zimbabwe and Angola, high cost of labour and shortage of skilled labour in the commercial sectors were reported.

### **2.2.7 Inflation**

Fuel price increases resulted in a general increase in the price level of various goods and services in almost all countries in SADC including prices of agricultural inputs such as seed, fertilizer and pesticides. High staple food prices in Mozambique and Angola for example, had a negative impact on access to food by many poor households.

### **2.2.8 Human and animal conflict**

Wildlife and human conflicts were reported in Namibia, Tanzania, Botswana and Angola. In Kubanga and Moxico regions in Angola and Namibia, it was reported that wildlife destroyed crops and livestock thereby putting the affected households at risk of food insecurity.

### **2.2.9 Civil unrest**

Some parts of SADC continue to experience civil unrest which pushes many households vulnerability to food insecurity and poverty. This is particularly the case in eastern and central parts of the Democratic Republic of Congo (DRC).

## 2.3 Summary of Vulnerability Assessments and Analysis Results

### 2.3.1 Vulnerability to food insecurity and poverty

Overall, the number of people vulnerable to food insecurity and poverty in SADC has increased by 23 percent to an estimated 4.04 million from last year's estimate of 3.3 million. Table 2 shows the trend in populations vulnerable to food insecurity and poverty in SADC from 2003/04 to 2010/11 consumption period.

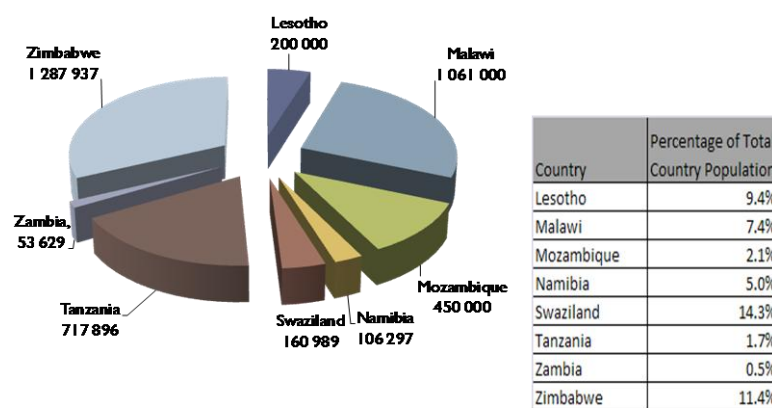
**Table 2: Population vulnerable to food insecurity and poverty in SADC from 2003/4 to 2010/2011 consumption period**

Country	Consumption Period							
	2003/04	2004/05	2005/06	2006/07	2007/08	2008/09	2009/10	2010/11
Lesotho	270 000	948 300	541 000	245 700	553 000	353 000	450 000	200 000
Malawi	400 000	1 340 000	5 055 000	833 000	63 200	673 498	147 492	1 061 000
Mozambique	659 000	659 000	801 655	240 000	520 000	302 700	281 300	450 000
Namibia	-	-	-	-	-	-	224 795	106 297
Swaziland	217 000	600 400	634 400	465 900	345 000	238 600	262 000	160 989
Tanzania	844 333	686 356	848 019	995 433	581 974	780 416	420 000	717 896
Zambia	60 000	39 300	1 232 700	380 537	440 866	444 624	110 000	53 629
Zimbabwe	5 422 600	2 300 000	2 884 800	1 392 500	4 100 000	5 100 000	1 400 000	1 287 937
<b>SADC*</b>	<b>7 872 933</b>	<b>6 573 356</b>	<b>11 997 574</b>	<b>4 553 070</b>	<b>6 604 040</b>	<b>7 892 838</b>	<b>3 295 587</b>	<b>4 037 748</b>

\* Including countries with NVACs only

This increase is attributed to increases in populations vulnerable to food insecurity and poverty recorded in Malawi (619 percent), the United Republic of Tanzania (71 percent) and Mozambique (60 percent) where localized poor and erratic rainfall conditions were experienced. The rest of the countries in SADC recorded decreases in the number of food insecure populations compared to last year ranging from 8 percent in Zimbabwe to

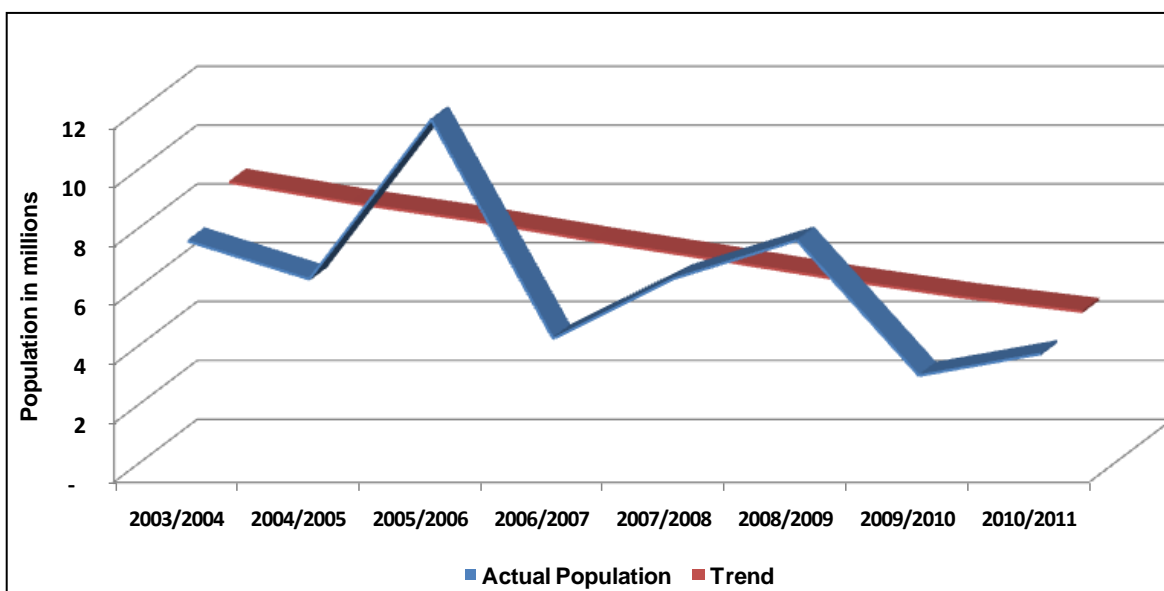
**Figure 4: Population vulnerable to food insecurity and poverty by country in 2010/2011 consumption period**



56 percent in Lesotho. The figures for Tanzania are from their preliminary assessment of February 2010; the final figures are expected after the October 2010 assessment. Meanwhile, early indications point to a decline in food insecure populations in that country and consequently in SADC as whole.

At a country level, the highest number of populations vulnerable to food insecurity and poverty was recorded in Zimbabwe although compared to last year; the number of food insecure population has decreased by 8 percent. Malawi has the next highest food insecure population. Despite food surpluses at national level, the country recorded a six fold increase in their food insecure populations compared to last season. This is primarily due to crop production failures in some of the densely populated areas in the south. However, given the national food surplus in Malawi, it is likely that the food needs of the affected households will be addressed using local food sources. As pointed out, the number of vulnerable population to food insecurity and poverty in Tanzania, which is third position, is likely to drop after the final assessment in October this year. Figure 5 shows the distribution of the food insecure population by country.

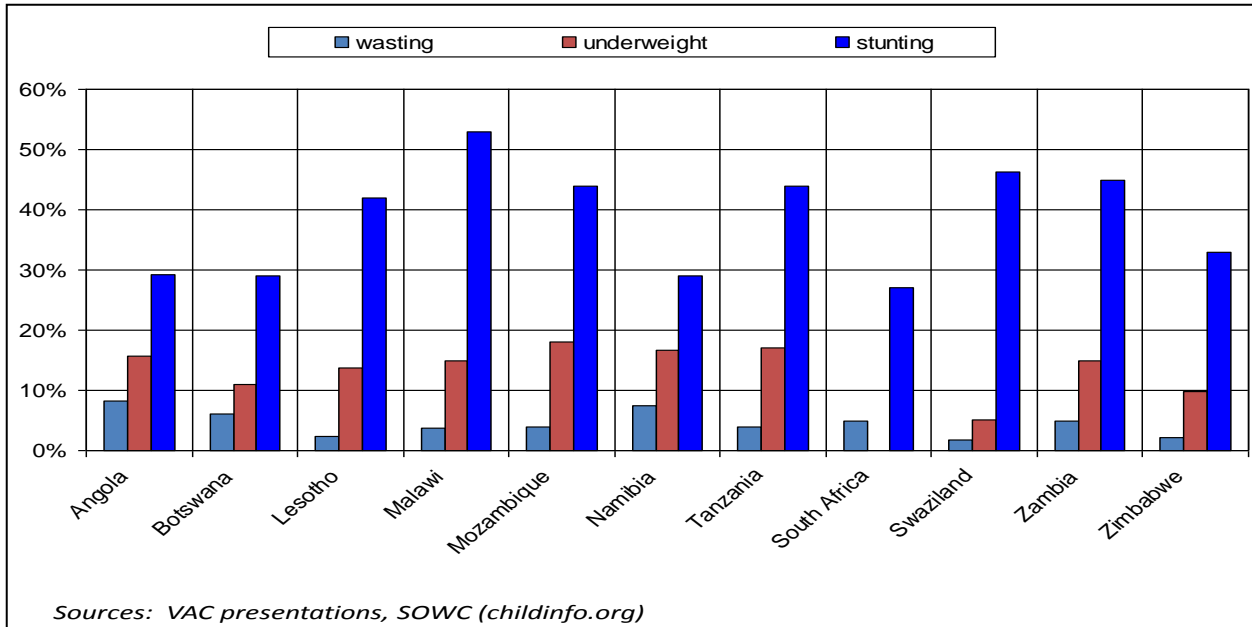
**Figure 5: Trends in population vulnerable to food insecurity and poverty in SADC**



### 2.3.2 Malnutrition

Despite the significant achievements towards food security in SADC, levels of malnutrition continue to be high. For example, levels of stunting, which is a long-term indicator of malnutrition, continue to be high especially in Malawi, Zambia, Swaziland, Tanzania, Lesotho and Mozambique where it ranges from 42 percent to 53 percent. Paradoxically, stunting levels continue to be relatively low in Zimbabwe despite the economic problems the country has gone through during the past years. Access to safe water and improved sanitation remain a challenge in SADC as well. Figure 6 below shows the rates of malnutrition in SADC by country.

**Figure 6: Malnutrition trends in some SADC Member States**



## 2.4 Response/Coping Strategies

Food insecure households employ a number of strategies and responses to reduce their vulnerability situation to both food insecurity and poverty. These strategies include the following:

### 2.4.1 Switching expenditure

Food insecure households are diverting expenditure from other items or commodities in order to buy staple food such as maize. Some of the households for example, are forgoing expenditures on health, clothing, school fees in order to buy maize and other cereals for food. In some cases food insecure households are forced to buy cheaper poor quality food just to ensure that their households have adequate food. In some countries like Namibia, there are also increased levels of cash borrowing and in-kind food credit.

### 2.4.2 Casual labour

Some of the affected households have intensified casual labour in order to find food or money to buy food. One disadvantage of this is that it is sometimes done at the expense of their own important activities such as farming in own gardens, this puts these households into a vicious cycle of poverty and food insecurity.

### **2.4.3 Sale of assets**

All countries in SADC reported an increased sale of household assets such as livestock and other household items by the affected households in order to buy food. In Namibia for example, food insecure households are selling their livestock at cheaper prices due to increased number of people selling livestock while others are bartering their livestock with staple food and other basic needs. Increased sale of household assets is likely to reduce the households' ability to withstand future shocks and hazards.

### **2.4.4 Rural to urban migration**

Many countries reported an increase in rural to urban migration especially by men and young women in search of employment. At regional level there is also migration into South Africa in search of employment opportunities.

### **2.4.5 Reduction in number of meals**

During the lean period and based on past experiences from different Member States findings, the situation if not controlled through appropriate intervention may lead to some households resorting to reducing the number of meals taken per day from three times to two times or even one meal per day. In some instances households may forgo regular meals and start eating less preferred foods such as wild plants and fruits.

### **2.4.6 Increased in reliance on social support programmes and networks**

In some Member States, a number of households are relying on social support in terms of cash transfers, humanitarian food support, public works programmes and school feeding. Countries such as Botswana, Malawi, Zimbabwe and Tanzania are implementing input subsidy programmes that are targeting some poor groups of people to allow them to access subsidized farm inputs such as seed and fertilizer. A number of households are also relying on remittances from relatives working in urban centres and other countries.

## **3.0 COUNTRY HIGHLIGHTS**

### **3.1 Angola**

The Angolan economy largely depends on oil production. Due to the decline in the global oil prices the GDP growth resulted into a negative of -0.6 percent in 2009 compared to 13.2 percent in 2008. The economy is expected to grow to 7.4 percent during the 2010 due to the promising global oil prices. The non oil sector more especially agriculture and infrastructure continued to grow during the 2009 despite the slump in the oil prices. Inflation rate was 14.0 percent in 2009 compared to 13.2 percent in 2008 and 15 percent in 2010. According to the UNDP Human Development Index, the national unemployment rate was at 25.2 percent in 2009. Access to safe water and improved sanitation was still low compared to other SADC countries and stood at 53 percent and 31 percent, respectively.

The National Survey of 2007 found that 8.2 percent of the under-five children in Angola had acute malnutrition (weight/height). About 4.3 percent of them were severely malnourished. The survey also found out that 29.2 percent of the under-five children had chronic malnutrition (height/age) and about 12.2 percent of them were severely malnourished. The survey further revealed that 15.6 percent of the under-five children were under weight (weight/age) with about 6.6 percent of them being severely malnourished. In addition, about 7.4 percent had less than 120cm (MUAC) with 2.2 percent at high risk of death. The national HIV and AIDS prevalence in Angola is relatively low compared to most Member States in the SADC Region but the HIV prevalence is high (9 percent) in the areas of the country bordering Namibia.

During the 2010/11 season, Angola recorded total cereal availability of 1,483,000 MT, a 9 percent increase in production compared to the previous season, against the national cereal requirement of 2,226,000 MT. This means that the country has a cereal deficit of 743,000 MT during the 2010/11 marketing season. Some of the hazards that affected crop production in the country include excessive rains, dry spells and destruction of crops by wildlife in some districts especially in Kuando, Kubango and Moxico regions.

### **3.2 Botswana**

About 33 percent of the Botswana's economy relies on the mining sector which was affected heavily by the global economic crisis beginning in late 2008 and early 2009. However, the non-mining sectors were not affected. The weak performance of the mining sector affected the GDP which dropped sharply in early 2009 from 2.9 percent in 2008 to negative 4.0 percent in 2009 but grew to 3.4 percent in 2010. The 2010 economic outlook for the country looks good as a result of the global economic recovery which is expected to benefit the mining sector in the country. Inflation decelerated from 12.6 percent in 2008 to 8.2 percent in 2009 and 6.8 percent in 2010, moving towards the 5.1 percent target for 2011 (2010 African Economic Outlook).

The projected cereal availability for the country in the 2010/11 marketing year is about 194,000 MT against a national cereal requirement of 419,000 MT, which leaves the country with 225,000 MT cereal deficit. This is despite the huge increase in cereal production from

42,000 MT to 109,000 MT in 2009 and 2010 respectively. The increase in cereal production is attributed to good rainfall performance and availability of inputs (both in commercial markets and through subsidy programme). It is expected that 10,400 people will be vulnerable to food insecurity and poverty during the 2010/11 season, the majority of which are from the very poor category that are always below the livelihood protection threshold. A total of Botswana Pula (P) 822,000.00 will be required to fill the gap.

### **3.3 Democratic Republic of Congo (DRC)**

The Democratic Republic of Congo (DRC)'s economy depends on agriculture which accounts for 38.2 percent of the GDP, mining and quarrying (12.2 percent), wholesale and retailing trade (22.4 percent), and construction (8.3 percent). In 2009, the DRC's economic growth slowed down from 6.2 percent in 2008 to 2.5 percent in 2009 but is expected to grow to 6.3 percent in 2010. The inflation rate for 2009 was higher (46.2 percent) in 2009 compared to 18 percent in 2008 and 25 percent for 2010. Private sector unemployment in 2009 was 58 percent compared to 53.2 percent in 2008. Access to clean water remains a challenge with only 46 percent and 29 percent of urban and rural population accessing clean water.

### **3.4 Lesotho**

The real GDP for Lesotho decreased from 4.4 percent in 2008 to 1.1 percent in 2009 as the manufacturing and mining sectors shrunk. The economy is expected to grow to 2.3 percent during 2010. The country's GDP is mainly from agriculture (17 percent) industry (41 percent), and services (42 percent). The per capita GDP is currently at \$642. Inflation rate in 2010 is expected to be 5.1 percent slightly higher than that of 2009 which was at 4.8 percent but far much lower than the inflation rate of 2008 which was 10.7 percent.

According to the 2007 National Nutrition Survey (NNS), 42 percent of the under-five children are stunted while 13.8 percent are under-weight. The HIV prevalence rate is currently at 23 percent which is higher than other SADC countries. About 83 percent of the population have access to clean water while 47 percent have access to improved sanitation.

Lesotho had normal onset of rains in 2009 except for torrential rains in February 2010 which affected crop development. Despite this, crop production in 2010 was still higher than in 2009. For example, maize production was at 98,035 MT up by 72 percent from 2009, sorghum up by 177 percent to 28082 MT and wheat up by 217 percent to 10,640 MT. The total cereal availability in the country for 2010/11 season is estimated at 207,000 MT, against a national cereal requirement of 369,000 MT, leaving the country with an estimated cereal deficit of about 163,000 MT. Despite the deficit, the food insecure population in the country is expected to decrease from 450,000 in 2009/10 to 200,000 during in 2010/11 consumption period.

### **3.5 Malawi**

Malawi's economy heavily depends on agriculture. The high agricultural production achieved during the past three seasons has helped the economy to grow. However, there has

been a declining trend in the real GDP for the past three years. For example, in 2008, the economy grew by 9.8 percent while in 2009 the economy grew by 7.0 percent and is project to be 6.5 percent in 2010. Inflation rates have remained relatively stable and in single digits over the past three marketing seasons as a result of the improved food situation. In 2010, inflation rate is projected at 8.1 percent compared to 8.5 percent in 2009 and 8.7 percent in 2008. HIV prevalence has declined to 12 percent from 15.2 percent in 2005. Population of people living below the poverty line has decreased to 40 percent from 52 percent.

There was a 7 percent decrease in cereal production in Malawi from 3.8 million MT in 2009 to 3.6 million MT in 2010. Late onset of rains in some districts especially in the southern parts of the country negatively affected crop and livestock production. Maize production in 2010 for instance, is down to 3.42 million MT from 3.7 million MT in 2009. Rice production decreased by 20 percent from 137,130 MT in 2009 to 110,106 MT in 2010. Production of other crops such as tobacco and cotton also dropped during the 2010 season. Total cereal availability is estimated at 3.7 million MT against a national cereal requirement of 2.6 million MT, resulting in a cereal surplus of about 1.2 million MT.

This year's vulnerability assessment and analysis in Malawi estimates food insecure population at 1.1 million compared to about 150,000 during the 2009/10 season. The affected areas include Nsanje, Chikhwawa and part of Balaka in the southern part of the country. However, the country will not need food imports because maize is available within the country to feed this food insecure population. A total of 45,363 MT of cereals will be required to meet the requirement of the food insecure population during the 2010/11 consumption period.

### **3.6 Mozambique**

Mozambique was also affected by the global economic meltdown. The Mozambique economy's growth slowed down to 5.4 percent in 2009 compared to 6.8 percent in 2008. However, the real GDP is projected to grow to 5.8 percent during the 2010. The inflation rate for 2009 was 3.4 percent compared to 8.2 percent in 2008 and 2009, respectively. The 2010 inflation rate is project to accelerate to 9.2 percent.

Preliminary vulnerability analysis results from the Crop and Food Security Assessment Mission (CFSAM) indicates that the food security situation across the country is favourable with staple food available and accessible from both own crop production and local markets. The food availability is expected to be average with surpluses in the northern part of the country where large carryover stocks of cereals from the 2009/10 marketing season are still available. The country forecasted that cereal production will be 5 percent higher than the 2.5 million MT produced during the 2009/10 season. The country requires 3.7 million MT of cereals against an estimated cereal availability of about 3.0 million MT, which leaves a deficit of about 700 thousand MT.

Preliminary analysis indicates that there are 450,000 food insecure people who will require humanitarian assistance during the 2010/11 consumption period. The majority of these people are mainly from the drought affected areas of the South and Central regions of the country where production levels have been below five year average.

### **3.7 Namibia**

The Namibian economy heavily depends on the mining, infrastructure and tourism sectors which contracted to negative 1.8 percent in 2009 from 3.3 percent in 2008. During the 2010, the real GDP is expected to grow by 3.3 percent as a result of the improvements in the main sectors of the economy. The inflation rate decelerated from 9.6 percent in December 2009 to 4.3 percent in June 2010. The national unemployment rate remains high at 51 percent in 2009 compared to 37 percent between 2003 and 2004. Overall, the poverty severity index shows a shortfall in consumption expenditure below the poverty line. Poverty lines based on monthly Namibia Dollar per capita stand at N\$127.15 (lower band), N\$184.56 (middle band) and N\$262.45 (upper band) for food. The government has a social pension scheme for the elderly and people living with disabilities as well as grants for orphans and vulnerable children.

According to the National Health and Demographic Survey (NHDS, 2006/7), the nutrition status of under-five children shows that the prevalence rate wasting was at 7.5 percent, underweight at 16.6 percent and stunting at 29 percent. Under-five mortality rate in urban areas was at 60 deaths per 1000 live births compared to 76 in rural areas. The 2006/7 NHDS also revealed that the national HIV and AIDS prevalence was 17.5 percent while life expectancy at birth was 52 years. The NHDS also reported that 93 percent of the population have access to safe water and 35 percent to improved sanitation.

Cereal production in Namibia increased by 40 percent from an estimate of about 111,000 MT in 2009 to an estimate of 155,000 MT in 2010. However, the increase in production does not meet the national cereal requirement estimated at 368,000 MT. Total cereal availability during the 2010/11 consumption period is estimated at 181,000 MT, resulting in cereal deficit of 187,000 MT.

The findings of the current vulnerability assessment indicate that about 106,297 people will be vulnerable to food insecurity and poverty during the 2010/11 marketing season. The large numbers of affected people are in areas that had below average harvests due to floods and dry spells. These areas include: Caprivi, Kavango, and Kunene regions. A total amount of 10,317 MT of cereals will be required in the affected areas to meet the cereal deficit during the 2010/11 consumption period.

### **3.8 South Africa**

According to the 2010 Africa Economic Outlook, after several years of sustained growth, the South Africa's economy fell into recession with GDP contracting by 1.8 percent in 2009. The economic slowdown in South Africa had already started in 2008 with the weakening of domestic demand and was exacerbated when the global crisis led to a sharp fall in exports. Growth is expected to recover gradually in 2010, helped by the recovery of global demand and boosted by the FIFA World Cup. The real GDP growth during the first quarter of 2010 was 4.6 percent with the manufacturing contributing 1.3 percent and 0.8 percent coming from mining and quarrying. The inflation rate of March 2010 was 4.8 percent slightly lower than the annual rate of 5.1 percent. The crude mortality rate in 2010 is 16.99 percent a decrease of 4.46 percent since 2007. Unemployment rate increased from 23.5 percent in 2008 to 25.2 percent in 2010. HIV and AIDS prevalence declined from 11.4 percent in 2006 to 10.9 percent in 2008.

The country produced 15.7 million MT of cereals during 2010 compared to 14.9 million MT in 2009. The national cereal requirement in 2010/11 consumption period is estimated at 16.2 million MT but the amount of cereals available is 19.0 million MT, resulting in a surplus of 2.8 million MT. In South Africa, most cereals are produced by the commercial sector. Out of the 15.7 million MT of cereals produced in 2010, the commercial sector accounted for was estimated at 13.3 million MT. The contribution by smallholder sector is therefore, minimal.

Projections for the 2010/11 consumption period indicate a maize and wheat surpluses of 3,748 million MT and 584, 000 MT respectively. Enough maize will therefore be available for local consumption and export. Despite the ready availability of food in the country, the access to enough food by the poor households remains a challenge.

### **3.9 Swaziland**

Swaziland's economy grew by 2.4 percent in 2008 before declining to 0.4 percent in 2009. It is, however, projected that the economy will grow by 1.1 percent during the 2010 marketing season. Inflation rate declined from 12.7 percent in 2008 to 4.1 percent in 2009 and is projected to slightly increase to 5.5 percent during the 2010 due to inflationary pressures on the economy. The decline in the Southern Africa Customs Union (SACU) revenue during the 2010 had a negative impact on the economy and budget allocations to the government and its departments. The closure of major industries such as the Paper Mills and Sappi Usuthu resulted into loss of employment to many people which in turn affected remittances.

HIV and AIDS prevalence is 32.4 percent which is one of the highest in the SADC. Access to clean water during dry season and sanitation at national level is about 52.3 percent and 78.8 percent, respectively.

The country forecasted a cereal production of 75,000 MT compared to the 2009 production of 71,000 MT, representing an increase of 6 percent. It is estimated that the country will require about 158,000 MT of cereals in the 2010/11 consumption period while total cereal availability is estimated at 84,000 MT, leaving a cereal deficit of 73,000 MT which will be met through imports from other countries in SADC, especially South Africa.

The delayed onset of rainfall season and the dry spells in the Highveld and Middleveld negatively affected crop production and the majority of the food insecure households come from these affected areas. The population vulnerable to food insecurity is estimated at 160,989 in the 2010/11 consumption period which is lower than the estimated food insecure population of 262,000 in 2009/10. However, good rains towards the end of the season improved the grazing conditions and water availability for livestock.

### **3.10 The United Republic of Tanzania**

The United Republic of Tanzania annual economic growth rate averaged 7 percent of GDP between 2001 and 2008. In 2008, the GDP rose to 7.4 percent before slowing down to 6 percent in 2009 and slightly rising to 5.7 percent in 2010. Inflation rate accelerated from 10.3 percent in 2008 to 12.1 percent in 2009 before decelerating to 8.5 percent in 2010. Infant mortality rate fell from 99 per 1000 live birth in 1999 to 58 per 1000 live births in 2008.

Under-five mortality improved to 91 per 1000 live births from 147 per 1000 live birth over the same period. Stunting amongst children declined from 44 percent in 1999 to 38 percent in 2004/05 while the proportion of underweight also declined from 29.5 percent to 22 percent within the same period. The improvements were mainly attributed to a combination of many factors including improvements in child nutrition, intensification of malaria control interventions and prevention of HIV and AIDS mother to child transmission. HIV and AIDS prevalence amongst population of 15-49 years of age was estimated at 6 percent in 2007/08 compared to 7 percent in 2003/04. In 2008/09 marketing season, 58.3 percent of rural population had access to improved clean and safe water sources compared to 57.1 percent in 2007/08. Access to clean water in urban areas increased to 83 percent in 2008/09 marketing season compared to 79 percent in 2007/08.

The preliminary crop and vulnerability assessment done in February 2010 revealed that the country would produce 7.1 million MT of cereals compared to 5.3 million MT in 2009, representing an increase of 35 percent. The government forecasts that the overall cereal availability will 7.4 million MT compared to national cereal requirement of 7.2 million MT, which leaves a cereal surplus of about 200,000 MT during the 2010/11 consumption period. The assessment also revealed that 717,896 people will be food insecure during the 2010/11 season compared to 420,000 during 2009/10. However, the number of food insecure is expected to go down after the final assessment in September/October this year 2010.

### **3.11 Zambia**

Zambia's economy grew at an average rate of 4.8 percent between 1999 and 2009. The 2010 GDP is expected to grow by 5.8 percent compared to 6.3 percent and 5.8 percent in 2009 and 2008, respectively. The economy is mainly driven by the mining, agriculture and construction sectors. In 2009, the agricultural sector grew by 7.1 percent compared to 2.6 percent in 2008. The average year end inflation in 2010 is expected to be at 10 percent compared to 9.9 percent and 12.4 percent in 2009 and 2008, respectively. HIV and AIDS prevalence declined from 16 percent to 14 percent between 2002 and 2009. Improvement in HIV and AIDS prevalence are mainly due to increased access to HIV and AIDS counselling and testing services and sexual behaviour change amongst people. Access to improved water and sanitation at national level is 53 percent and 65 percent, respectively. However the rural-urban access disparity of improved water and sanitation is huge. For example, access to improved water is 37 percent and 86 percent while access to improved sanitation is 57 percent and 80 percent in rural and urban areas respectively.

The 2009/10 rainfall season was characterised by normal to above normal rainfall. Flash floods and water logging conditions were experienced in the low lying areas of the country. Extreme southern parts of the country experienced late onset start of rainfall.

The 2010 cereal production was 3.1 million MT, up by 41 percent from 2.2 million MT in 2009. Total estimated cereal availability is estimated at 3.4 million MT compared to a national cereal requirement of 2.2 million MT, which leaves a surplus of 1.1 million MT during the 2010/11 season. The number of food insecure population during the 2010/11 consumption period decreased by 49 percent to 53,629 compared to last season.

### 3.12 Zimbabwe

The economy of Zimbabwe declined by 40 percent between 2000 and 2008 marketing seasons (Figure 1). There was hyper-inflation during this period and the country experienced critical shortage of major economic inputs such as fuel, foreign currency, electricity etc. Formal employment dropped drastically and many people were pushed into the informal sector and some migrated in search of employment. Many people in the country are under-employed.

The advent of the Unity Government saw major changes in the economy of the country. The country adopted convertible multiple currencies as the medium of exchange from February 2009. This led to restocking of shops with basic household commodities and the industry capacity utilization rose from 10 percent in 2008 to over 30 percent in 2009. There has been a dramatic fall in inflation from hyperinflation to low levels. For example monthly inflation averaged negative 0.2 percent over the period from January 2009 to May 2010 and year on year inflation for May 2010 was 6.1 percent. The economy grew for the first time since 2002 by between 5.1 percent (MoF) and 6.1 percent (IMF). and. GDP is expected to grow by between 3.7 and 7 percent in 2010.

Despite the economic decline, malnutrition indicators remained relatively stable and below internationally accepted emergency thresholds. For example, between 2000 and 2008 marketing season acute malnutrition levels ranged from 2.9 to 6.4 percent, stunting from 23.5 to 33.1 percent and underweight from 14.2 to 20.4 percent. HIV prevalence rate dropped from 35 percent to 15.6 percent in 2007.

In the recent past domestic cereal production has been variable and below national production. The Ministry of Agriculture, Mechanisation and Irrigation Development estimated that the 2010 cereal harvest would be about 1.5 million MT compared to 1.6 million MT in 2009. Although the production is almost the same in these two years, it is 31 percent above the recent five year average cereal production. Cereal availability in the 2010/11 consumption period is estimated at 1.6 million MT while national cereal requirement is estimated at 2.5 million MT, which leaves a cereal deficit of about 921,000 MT. The number of food insecure people in the 2010/11 consumption period is estimated at 1.3 million compared to 1.4 million in 2009/10 consumption period.

## **4.0 MAIN CONCLUSIONS AND RECOMMENDATIONS**

### **4.1 Key conclusions**

The following is a summary of the key conclusions from the 2010/2011 RVAA assessments and analysis:

- ✓ Although food production is generally increasing in SADC, agriculture still remains dependent on rainfall and therefore, is susceptible to unstable weather patterns. This is partly attributed to climate change and low levels of irrigation farming.
- ✓ Poverty levels remain very high in SADC to the extent that many poor households are unable to produce enough food because they cannot afford to buy the necessary agricultural inputs such as fertilizer and seed; and other essential items for their basic livelihoods. The move by some Member States to subsidise inputs is therefore, bearing fruits as reflected in increase in crop production in some Member States.
- ✓ Despite some of the achievements made in food production, malnutrition levels remain high throughout SADC supporting the notion that increased food production is a necessary but not sufficient condition to reduce malnutrition.
- ✓ Some of the countries in SADC still do not have NVACs and some of the NVACs are not yet institutionalised. Lack of financial support has thus, affected the operations of NVACs in some Member States.

### **4.2 Recommendations**

The Forum discussed and adopted the following recommendations aimed at addressing identified food insecurity and vulnerability challenges in SADC. These include:

- ✓ Increased safety nets or social protection measures to support vulnerable communities through: targeted food aid, targeted cash transfers, and public works programmes.
- ✓ Promote access to agricultural inputs through such programmes as the input subsidy programme being implemented in Malawi and a few other countries in SADC.
- ✓ Output subsidies should also be considered as one way of encouraging farmers to increase agricultural production.
- ✓ Improve market infrastructure in order to increase farmers' access to markets for crops, livestock and livestock products in order to improve household incomes.
- ✓ Promote agricultural technology and research in order to improve agricultural production and food security in general (e.g. development and promotion of drought resistant and early maturing crop varieties. Examples include: Zimbabwe (maize), Botswana (sorghum), and Tanzania (sorghum and cassava) etc.
- ✓ Promote and strengthen agricultural extension services to improve the extension – farmer linkages and ensure increased adoption of modern technologies that lead to improved food security.
- ✓ Promote manufacturing of improved seeds, fertilizer and pesticides for both crops and livestock within SADC in order to reduce the cost of production emanating from high cost of imports.

- ✓ Promote value addition to primary commodities to increase their market value..
- ✓ Promote and intensify irrigation activities in areas which are highly prone to erratic rainfall and also experience prolonged dry spells. The 2008 SADC FANR Annual Report shows that apart from South Africa and Mauritius, most countries managed to only irrigate less than 50 percent of their irrigable land.
- ✓ Increase investment in both urban and rural infrastructure such as
  - Construction of food storage facilities to reduce post-harvest losses;
  - Construction and improvement of road and rail networks to improve access to markets;
  - Development of post-harvest processing facilities for value addition of agricultural commodities etc.
- ✓ Promote health and nutrition education in order to reduce malnutrition and HIV/AIDS prevalence in SADC.
- ✓ Facilitate the establishment and institutionalization of National Vulnerability Assessment Committees (NVACs) and improve funding for assessments and analysis to strengthen and deepen vulnerability assessments for improved policy formulation and programme development. South Africa, Angola, Mauritius and Seychelles are the only countries that do not have NVACs. However the process to establish an NVAC in South Africa is underway

Recommendation on the assessment and analysis process(es):

- ✓ While the RVAA Programme has made great strides in informing stakeholders in SADC about vulnerability to food insecurity and poverty in SADC, there is still a need for improvement in assessments and analysis, especially in area of chronic food insecurity and poverty.

## 5.0 LIST OF PARTICIPANTS

### ANGOLA

1. Maria Da Silva  
Valdemar Simões De Oliveira Morais  
Ministry of Agriculture, Rural Development of Fishing, Bairro Talahady, Casa No. 32, Cazenga - Luanda  
Tel: +244 222 324 944; Fax: +244 222 322 091, Mobile: +244 923 973 393  
E-mail: [valdermorais288@hotmail.com](mailto:valdermorais288@hotmail.com)
2. Maria Futi Wilson Tati  
Bairro Miramar, Casa 59, Luanda  
Mobile: +244 926 378 57  
E-mail: [nmati@hotmail.com](mailto:nmati@hotmail.com)

### BOTSWANA

3. Kutlwano Sebolaaphuti  
Principal Food Strategy Coordinator  
Ministry of Finance and Development Planning, Government Enclave, Gaborone  
Tel: +267 395 0191; Fax: +267 390 0763; Mobile: +267 71 29 22 64  
E-mail: [sebolaaphuti@gov.bw](mailto:sebolaaphuti@gov.bw)
4. Lame Collen Ntebang  
Agricultural Economist  
Ministry of Agriculture, Private Bag 003, Gaborone  
Tel: +267 368 9383; Fax: +267 391 8091; Mobile: +267 74 60 62 31  
E-mail: [lntebang@gov.bw](mailto:lntebang@gov.bw)
5. Boitumelo Keabilwe  
Water Engineer  
Ministry of Local Government, P.O. Box 46505, Gaborone  
Tel: +267 365 8575; Fax: +267 318 8909; Mobile: +267 72 44 18 58  
E-mail: [bkeabilwe@gov.bw](mailto:bkeabilwe@gov.bw)

### DEMOCRATIC REPUBLIC OF CONGO (DRC)

6. Robert Ngonde Nsakala  
Agro Economist Director  
Ministry of Agriculture, Boulevard du 30 Juin, BP 8722, Kinshasa/Gombe  
Mobile: +243 815 101 894/99 946 9871  
E-mail: [ngonde\\_nsakala@hotmail.com](mailto:ngonde_nsakala@hotmail.com); [ngonde\\_robert@yahoo.fr](mailto:ngonde_robert@yahoo.fr)

## LESOTHO

7. Matseliso Mojaki  
Lesotho VAC Chair  
Lesotho Disaster Management Authority, Private Bag A453, Maseru 100  
Tel: +266 22 327 944; Mobile: +266 588 702 42  
E-mail: [memojaki@ymail.com](mailto:memojaki@ymail.com); [memojaki@yahoo.com](mailto:memojaki@yahoo.com)
8. Mokotla Ntela  
Assistant Economic Planner  
Disaster Management Authority, Private Bag A453, Maseru 100  
Tel: +266 22 325 047; Fax: +266 22 325 047; Mobile: +266 584 600 64  
E-mail: [m\\_ntela@yahoo.com](mailto:m_ntela@yahoo.com)
9. Mamonyaku Margaret Koloti  
District Disaster Management Officer  
Lesotho Disaster Management Authority, P.O. Box 82, Mafeteng 900  
Tel: +266 22 701 476; Fax: +266 22 700 023; Mobile: +266 631 744 97  
E-mail: [mamonyakukoloti@ymail.com](mailto:mamonyakukoloti@ymail.com)

## MALAWI

10. Hannock Kumwenda  
Malawi VAC Chairperson  
P.O. Box 30136, Lilongwe 3  
Tel: +265 1 788 888; Mobile: +265 9999 35270  
E-mail: [muliska@yahoo.com](mailto:muliska@yahoo.com); [chairperson@malawivac.net](mailto:chairperson@malawivac.net);  
[hannock.kumwenda@med.gov.mw](mailto:hannock.kumwenda@med.gov.mw)
11. Simon Mulungu  
Economist  
Ministry of Dept. Planning and Cooperation, P.O. Box 30136, Lilongwe 3  
Tel: +265 1 788 888; Fax: +265 1 788 247; Mobile: +265 993 670 387  
E-mail: [smulungu@yahoo.com](mailto:smulungu@yahoo.com)
12. Richard Kajombo  
Economist  
Ministry of Dept. Planning and Cooperation, P.O. Box 30136, Lilongwe 3  
Mobile: +265 884 390 744  
E-mail: [rkajombo@yahoo.co.uk](mailto:rkajombo@yahoo.co.uk)

## MOZAMBIQUE

13. Antonio Jacinto Paulo da Graga  
Agronomist  
Ministry of Agriculture, Av FPLM No. 2698, Recinto Do IIAM, Maputo  
Tel: +258 21 461 873; Fax: +258 21 462 40; Mobile: +258 82 328 4440  
E-mail: [jacintograca@yahoo.com.br](mailto:jacintograca@yahoo.com.br)

14. Jantilal Hiten  
Agronomist- Chief of Early Warning Unit  
Ministry of Agriculture, Praca Dos Herois, Recinto Do IIAM, AV. FPLM 2698,  
Maputo  
Tel: +258 21 415 175; Fax: +258 21 415 103; Mobile: +258 82 88 56 350  
E-mail: [hiten2@yahoo.com.br](mailto:hiten2@yahoo.com.br)
15. Francisca Barrote Cabral  
Anthropologist, Head of Information Unit,  
SETSAN, Av. Das Forcas Populares 2698, Recinto do IIAM, Maputo  
Tel: +258 21 462 775; Fax: +258 21 462 776; Mobile: +258 82 39 43 820  
E-mail: [fcabral@setsan.org.mz](mailto:fcabral@setsan.org.mz)

#### **NAMIBIA**

16. Vekondja Hugo Tjikuzu  
Deputy Director, National Planning Commission Poverty Reduction, Windhoek  
Tel: +264 61 283 4138; Fax: +264 61 283 4233/226 501, Mobile: +261 811 228 298  
Email: [vtjikuzu@npc.gov.na](mailto:vtjikuzu@npc.gov.na)
17. Anastasia Amunyela  
Early Warning, Monitoring & Risk Assessment  
Office of the Prime Minister, Directorate Disaster Risk Management, P.O. Box  
11479, Klein Windhoek  
Tel: +264 61 273 589; Fax: +264 61 306 020; Mobile: +261 811 247 338  
E-mail: [aamunyela@opm.gov.na](mailto:aamunyela@opm.gov.na); [asamunyela@yahoo.com](mailto:asamunyela@yahoo.com)
18. Bernd Rothkegel  
Director – Planning MAWF  
Ministry of Agriculture, Water and Forestry, Windhoek  
Tel: +264 61 208 7680; Fax: +264 61 208 7767  
E-mail: [rothkegelb@mawf.gov.na](mailto:rothkegelb@mawf.gov.na)
19. Sylvanus Nambala  
Development Planner: Poverty Reduction & Equity  
Namibia National Planning Commission, Private Bag 25681, Windhoek  
Tel: +264 61 283 4117; Fax: +264 61 26501; Mobile: +261 81 29 35 643  
E-mail: [snambala@npc.gov.na](mailto:snambala@npc.gov.na)
20. Matheus Nangolo Ndjodhi  
Senior Agricultural Economist  
Ministry of Agriculture, Water and Forestry, Private Bag 13184, Windhoek  
Tel: +264 61 208 7662; Fax: +264 61 208 7767; Mobile: +261 81 25 63 448  
E-mail: [ndjodhim@mawf.gov.na](mailto:ndjodhim@mawf.gov.na); [ndjodhi@webmail.co.za](mailto:ndjodhi@webmail.co.za)
21. Petrus Natangwe Ashipala  
Development Planner  
Ministry of Regional and Local Government, Housing and Rural Development,  
Private Bag 13289, Windhoek  
Tel: +264 61 297 5124; Fax: +264 61 297 5096; Mobile: +261 81 25 61 474  
E-mail: [pashipala@mrlgh.gov.na](mailto:pashipala@mrlgh.gov.na); [pashipala@yahoo.com](mailto:pashipala@yahoo.com)

22. Gabriel Kalimbwe Kangowa  
Deputy Director  
Office of the Prime Minister, P.O. Box 9399, Klevin Windhoek  
Tel: +264 61 273 584; Fax: +264 61 306 020; Mobile: +261 81 1247 497  
E-mail: [gkangowa@opm.gov.na](mailto:gkangowa@opm.gov.na)
23. Timothy Shixungileni  
Disaster Management Officer  
Early Warning & Risk Management, Office of the Prime Minister, P.O. Box 6732,  
Windhoek  
Tel: +264 61 273 588; Fax: +264 61 306 020; Mobile: +261 81 12 47 332  
E-mail: [tshixungileni@opm.gov.na](mailto:tshixungileni@opm.gov.na)
24. Geraldine Diergaardt  
Chief Statistician  
Ministry of Agriculture, Water and Forestry, Private Bag 1318, Windhoek  
Tel: +264 61 208 7672; Fax: +264 61 208 7767; Mobile: +261 814 368 477  
E-mail: [pickeringg@mawf.gov.na](mailto:pickeringg@mawf.gov.na)

#### **SOUTH AFRICA**

25. Zodwa Phakedi  
Food Security Manager  
Private Bag X250, Pretoria 0001  
Tel: +27 12 319 6656; Fax: +27 12 319 6669; Mobile: +27 82 330 6499  
E-mail: [zodwaP@daff.gov.na](mailto:zodwaP@daff.gov.na); [zodwaph@gmail.com](mailto:zodwaph@gmail.com)
26. Maria Isabella Schmidt  
Executive Manager Social Analysis  
168 Andries Street, Private Bag X44, Pretoria 0001  
Tel: +27 12 337 6379; Mobile: +27 82 884 4281  
E-mail: [isabelsc@statssa@gov.za](mailto:isabelsc@statssa@gov.za)

#### **SWAZILAND**

27. Choice Mciniseli Ginindza  
Swazi VAC Chairperson  
P.O. Box 456, Mbabane  
Tel: +268 404 2151/4; Fax: +268 404 3300; Mobile: +268 76 03 978  
E-mail: [cginindza@yahoo.co.uk](mailto:cginindza@yahoo.co.uk)
28. Bongumenzi Makhanya  
Swazi VAC Focal Person  
P.O. Box A33, Mbabane  
Tel: +268 404 5994; Fax: +268 404 8107; Mobile: +268 76 62 0392  
E-mail: [bongumenzi.makhanya@ndma.org.sz](mailto:bongumenzi.makhanya@ndma.org.sz)

29. Nkosinathi M. Vilakati  
Programme Coordinator  
Save the Children Swaziland, Jojo Street, Msunduzi Road, P.O. Box 472, Mbabane  
Tel: +268 404 3277; Fax: +268 404 4719; Mobile: +268 76 04 5277  
E-mail: [nvilakati@savethechildren.org.sz](mailto:nvilakati@savethechildren.org.sz)

#### **UNITED REPUBLIC OF TANZANIA**

30. Wilson Katunzi  
Agriculture Statistician  
Ministry of Agric Food Security and Coops, P.O. Box 9192, Dar es Salaam  
Tel: +255 286 5950; Fax: +255 286 5951; Mobile: +255 754 420 978  
E-mail: [wkatunzi@yahoo.com](mailto:wkatunzi@yahoo.com)
31. Carol Cornel Kilembe  
Principal Agricultural Officer  
Ministry of Agric Food Security and Coops, P.O. Box 9192, Dar es Salaam  
Tel: +255 222 865 951; Fax: +255 222 865 951; Mobile: +255 753 766 637  
E-mail: [carockilembe@yahoo.com](mailto:carockilembe@yahoo.com)
32. Merisia Sebastian Mparazo  
Senior Fisheries Officer  
Ministry of Livestock Development and Fisheries, P.O. Box 9152, Dar es Salaam  
Mobile: +255 787 217 651  
E-mail: [smerisia@yahoo.com](mailto:smerisia@yahoo.com)

#### **ZAMBIA**

33. Maudy Kaoma  
Senior Planner  
Ministry of Health, University Teaching Hospital, Private Bag RWIX, Lusaka  
Mobile: +260 977 503 559  
E-mail: [maudykaoma@yahoo.com](mailto:maudykaoma@yahoo.com)
34. Evans Kapekele  
Principal Research & Planning Officer  
Disaster Management & Mitigation Unit, P.O. Box 38963, Lusaka  
Tel: +260 211 252 692; Fax: +260 211 255 725; Mobile: +260 977 462 252  
E-mail: [evanskapekele@yahoo.co.uk](mailto:evanskapekele@yahoo.co.uk)
35. Michael Isimwaa  
Chief Agric. Statistics & Data Analyst  
Ministry of Agriculture, Policy and Planning Department, Room 419 Mulungushi  
House, P.O. Box 50197, Lusaka  
Tel: +260 211 250 477; Fax: +260 211 253 520; Mobile: +260 969 291 902  
E-mail: [mnisimwaa@maff.gov.zm](mailto:mnisimwaa@maff.gov.zm)

36. Eunice Bwalya Chishimba  
Catholic Relief Services – Technical Lead Resilience  
Longolongo Road, Plot No. 5033, P.O. Box 30829, Lusaka  
Tel:+260 211 224 126; Mobile: +260 977 746 361  
E-mail: [nicechishimba@yahoo.co.uk](mailto:nicechishimba@yahoo.co.uk); [echishimba@zm.saro.crs.org](mailto:echishimba@zm.saro.crs.org)

#### **ZIMBABWE**

37. George Dadirayi Kembo  
Acting Director  
Zimbabwe Food Nutrition Council, P.O. Box 6640, Harare  
Tel: +263 4 862 586; Fax: +263 4 860 350/1; Mobile: +263 912 452 037  
E-mail: [georgekembo@gmail.com](mailto:georgekembo@gmail.com); [gkembo@sirdc.ac.zw](mailto:gkembo@sirdc.ac.zw)
38. Sidney C. Mhishi  
Director  
Ministry of Labour & Social Services, Private Bag 7707, Causeway, Harare  
Tel:+263 4 796 080; Fax: +263 4 796 080; Mobile:+263 712 403 229  
E-mail: [mhishi@sdf.org.zw](mailto:mhishi@sdf.org.zw); [sgmhishi@zimnaporc.co.zw](mailto:sgmhishi@zimnaporc.co.zw)
39. Ancikaria Chigumira  
Deputy Director – Nutrition  
Ministry of Health, P.O. Box CY 1122, Causeway, Harare  
Tel: +263 4 792 454; Mobile: +263 712 433 283/913 551 672  
E-mail: [ancikaria@gmail.com](mailto:ancikaria@gmail.com)

#### **COOPERATING PARTNERS**

40. James Bwirani  
Country Representative,  
FEWSNET Malawi, P.O. Box 30455, Lilongwe 3, Malawi  
Tel: +265 1 754 892; Fax: +265 1754 892; Mobile: +265 999 298 211  
E-mail: [jbwirani@fews.net](mailto:jbwirani@fews.net)
41. Susan Kumwembe  
Programme Officer  
DFID Malawi, P.O. Box 30042, Lilongwe 3 Malawi  
Tel: +265 1 772 400; Fax: +265 1 772 657; Mobile: +265 888 843 794  
E-mail: [s-kumwembe@dfid.gov.uk](mailto:s-kumwembe@dfid.gov.uk)
42. Bata Olanda  
Country Representative,  
FEWSNET Mozambique, Av. FPLM 2698, Maputo, Mozambique  
Tel: +258 21 460 588; Fax: +258 21 462 657; Mobile: +258 82 328 7580  
E-mail: [Obata@fews.net](mailto:Obata@fews.net)

43. António Salomão Mavie  
Country Deputy Representative,  
FEWSNET Mozambique, AV 24 De Julho, No 806 – Maputo, Mozambique  
Tel: +258 21 460 588; Fax: +258 21 462 657; Mobile: +258 82 410 7250  
E-mail: [amavie@fews.net](mailto:amavie@fews.net)
44. Ddere Van Der Westhuizen  
Project Development Specialist  
USAID Namibia, Private Bag 12018, Windhoek  
Tel: +264 61 273 711; Fax: +264 61 227 006; Mobile: +264 811 221 335  
E-mail: [mvanderwesthuizen@usaid.gov](mailto:mvanderwesthuizen@usaid.gov)
45. Elias Mabaso  
Humanitarian Affairs Officer  
OCHA, 11 Naivasha Road, Merafe House, Johannesburg, South Africa  
Tel: +27 11 517 1661; Mobile: +27 829 081 337  
E-mail: [mabasoe@un.org](mailto:mabasoe@un.org)
46. Tinago Chikoto  
Information Management Officer  
OCHA Regional Office for Southern & Eastern Africa, 11 Naivasha Road, Merafe House, Johannesburg, South Africa  
Tel: +27 11 517 1589; Mobile: +27 829 044 267  
E-mail: [chikoto@un.org](mailto:chikoto@un.org)
47. Phumzile Mdladla  
FEWSNET Regional Representative,  
150 Brooks Street, Brooklyn 0181, Pretoria, South Africa  
Tel: +27 12 362 6494; Fax: +27 12 362 5651; Mobile: +27 826 684 144  
E-mail: [pmdladla@fews.net](mailto:pmdladla@fews.net)
48. Isaac Tarakidzwa  
FEWSNET Deputy Regional Representative  
150 Brooks Street, Brooklyn 0181, Pretoria, South Africa  
Tel: +27 12 362 0880; Fax: +27 12 362 5651; Mobile: +27 765 928 738  
E-mail: [itarakidzwa@fews.net](mailto:itarakidzwa@fews.net)
49. Patricia Masanganise  
Consultant FEWSNET  
PO Box 2275, Edenvale 1610, South Africa  
Tel: +27 11 452 1665; Fax: +27 11 452 1665; Mobile: +27 839 848 744  
E-mail: [trish\\_pec@yahoo.co.uk](mailto:trish_pec@yahoo.co.uk)
50. Tinomuenda Tamuka Magadzire  
FEWSNET/SADC, SADC Secretariat, Private Bag 0095, Gaborone, Botswana  
Tel: +267 395 1863; Fax: +267 397 2848; Mobile: +267 71 44 79 05  
E-mail: [tmagadzire@sadc.int](mailto:tmagadzire@sadc.int)

51. Winnie Mark Bashagi  
FEWSNET Tanzania Country Representative  
P.O. Box 9130, Dar es Salaam, Tanzania  
Mobile: +255 754 865 664  
E-mail: [wbashagi@chemonics.net](mailto:wbashagi@chemonics.net)
52. Joyce Chitja (Nee Thamaga)  
UKZN COE – Acting Director & Coordinator  
1 Carbis Road, University of Kwazulu Natal, Scottsville 3201, South Africa  
Tel: +27 33 260 6171; Fax: +27 33 260 6080; Mobile: +27 836 739 436  
E-mail: [chitjaj@ukzn.co.za](mailto:chitjaj@ukzn.co.za)
53. Isabel Madzorera  
Deputy Country Representative  
FEWS NET Zambia, Plot 30G Sable Road, Kabulonga, Lusaka, Zambia  
Tel: +260 211 262 750/1; Mobile: +260 979 561 706  
E-mail: [imadzorera@fews.net](mailto:imadzorera@fews.net)
54. Blessing Butaumocho  
FEWSNET Country Representative  
5 Thornburg Avenue, Mt Pleasant, Harare, Zimbabwe  
Mobile: +263 712 420 954  
E-mail: [bbutaumocho@fews.net](mailto:bbutaumocho@fews.net)
55. Douglas Magunda  
M & E Officer, Zimbabwe FAO  
Tel: +263 4 252 015; Mobile: +263 912 410 395  
E-mail: [douglas.magunda@fao.org](mailto:douglas.magunda@fao.org)

#### **SADC SECRETARIAT**

56. Bentry Chaura  
Senior Programme Officer Food Security  
SADC FANR, Private Bag 0095, Gaborone, Botswana  
Tel: +267 395 1863; Fax: +267 397 2848; Mobile: +267 71 52 37 54  
E-mail: [bchaura@sadc.int](mailto:bchaura@sadc.int)
57. Duncan Samikwa  
Programme Coordinator  
SADC RVAA Programme, SADC FANR Directorate, Private Bag 0095, Gaborone, Botswana  
Tel: +267 318 7324; Fax: +267 3187315; Mobile: +267 72 11 20 31  
E-mail: [dsamikwa@sadc.int](mailto:dsamikwa@sadc.int)
58. Evance Chapasuka  
Regional VAA Expert  
SADC RVAA Programme, SADC FANR Directorate, Private Bag 0095, Gaborone  
Tel: +267 318 7314; Fax: +267 3187315; Mobile: +267 72 11 20 32  
E-mail: [echapasuka@sadc.int](mailto:echapasuka@sadc.int)

59. Gary Sawdon  
RHVP Technical Advisor  
SADC RVAA Programme, SADC FANR Directorate, Private Bag 0095, Gaborone  
Tel: +267 318 7318; Fax: +267 3187315; Mobile: +267 71 35 60 17  
E-mail: [sawdon@botsnet.bw](mailto:sawdon@botsnet.bw)
60. Masozi Kachale  
Regional VAA Technical Advisor  
SADC RVAA Programme, SADC FANR Directorate, Private Bag 0095, Gaborone  
Tel: +267 318 7317; Fax: +267 3187315; Mobile: +267 75 08 92 17  
E-mail: [makachale@yahoo.com](mailto:makachale@yahoo.com)
61. Charles Rethman  
Regional VAA Technical Advisor  
SADC RVAA Programme, SADC FANR Directorate, Private Bag 0095, Gaborone  
Tel: +267 318 7317; Fax: +267 3187315; Mobile: +267 75 20 67 40  
E-mail: [charles-rethman@yahoo.com](mailto:charles-rethman@yahoo.com)
62. Tracy Cull  
Regional Hunger Vulnerability Programme  
Mobile: +27 828 206 607  
E-mail: [tracy@rhvp.org](mailto:tracy@rhvp.org)
63. Katharine Vincent  
Regional Hunger Vulnerability Programme  
Mobile: +27 727 219 645 25  
E-mail: [katharine@rhvp.org](mailto:katharine@rhvp.org)
64. Acidri James  
Namibia VAA Technical Advisor – Namibia VAC  
Office of the Prime Minister, PO Box 11479, Windhoek  
Mobile: +264 816 123 424  
E-mail: [jamesacidri@yahoo.co.uk](mailto:jamesacidri@yahoo.co.uk)
65. Robert Kafakoma  
Facilitator, Private Bag B430, Lilongwe 3  
Tel: +265 1 775 375; Fax: +265 1 775 343; Mobile: +265 888 842 875  
E-mail: [robertkafakoma@ymail.com](mailto:robertkafakoma@ymail.com)
66. Bonolo Nyambe  
Programme Assistant Finance Officer  
SADC RVAA Programme, SADC FANR Directorate, Private Bag 0095, Gaborone  
Tel: +267 395 3435; Fax: +267 3187315; Mobile: +267 72 11 26 48  
E-mail: [bnyambe@sadc.int](mailto:bnyambe@sadc.int)
67. Masego G. Maphage  
SADC RVAA Programme Secretary  
SADC FANR Directorate, Private Bag 0095, Gaborone  
Tel: +267 395 3435; Fax: +267 3187315; Mobile: +267 721 438 69  
E-mail: [mmaphage@sadc.int](mailto:mmaphage@sadc.int)