



Government of the
Republic of Malawi



MALAWI
Vulnerability
Assessment Committee



SADC FANR
Vulnerability
Assessment Committee

MVAC Links to Policies and Programmes

By: **Hannock Kumwenda**, MVAC Chair, Deputy
Director, M&E Div, MEP&D

Technical Support



Save the Children®

FEWS



The Strategic and Policy Framework

- Malawi Growth and Development Strategy (MGDS)
 - Replaced Poverty Reduction Strategy
 - Over-arching operational medium-term (for the next five years) strategy
- Food Security Policy
 - Replaces 45 older food security and agricultural policies
 - Linked to Nutrition Security Policy (FSP & NSP originally drafted together, then split by Cabinet)

MGDS

- Policy shift from social development emphasis (PRSP) economic growth and wealth creation
- Six priority areas:
 - Agriculture and food security
 - Irrigation and water
 - Transport and infrastructure
 - Energy
 - Integrated rural development
 - Nutrition & HIV/AIDS

MGDS Thematic Areas

The conceptual framework of the MGDS has 5 themes :

- Sustainable Economic Growth
- Social Protection
- Social Development
- Infrastructure Development
- Improved Governance

VAC
contribution
most useful
here

Six Priority Areas

Five Thematic Areas

SUB-THEMES

Agriculture and food security

Irrigation and water Development

Transport Infrastructure Development

Energy Generation and Supply

Integrated Rural Development

HIV/AIDS and Nutrition

Sustainable Economic Growth

Social Protection

Social Development

Infrastructure Development

Improved Governance

Max.contribution of Econ. Growth sectors
Enabling Environment for Pvt sector dev
Export-led Growth
Conserve natural resources
Econ Empowerment,
Land and housing

Disaster Risk Management
Protecting the Vulnerable

Health and Population
Education
Gender

Air and Rail Transport
Information, Communication &
Technologies

Macroeconomic Growth
Public Policy Formulation, Fiscal &
Public Sector Mngmnt corruption
Decentralization
Strong Justice System and Rule of Law
Security
Corporate Governance

MGDS tools

- Annual national budget
 - It is **VITAL** that the VAC prioritise the timing of its outputs around this
- MGDS Monitoring and Evaluation Master Plan

Social Protection

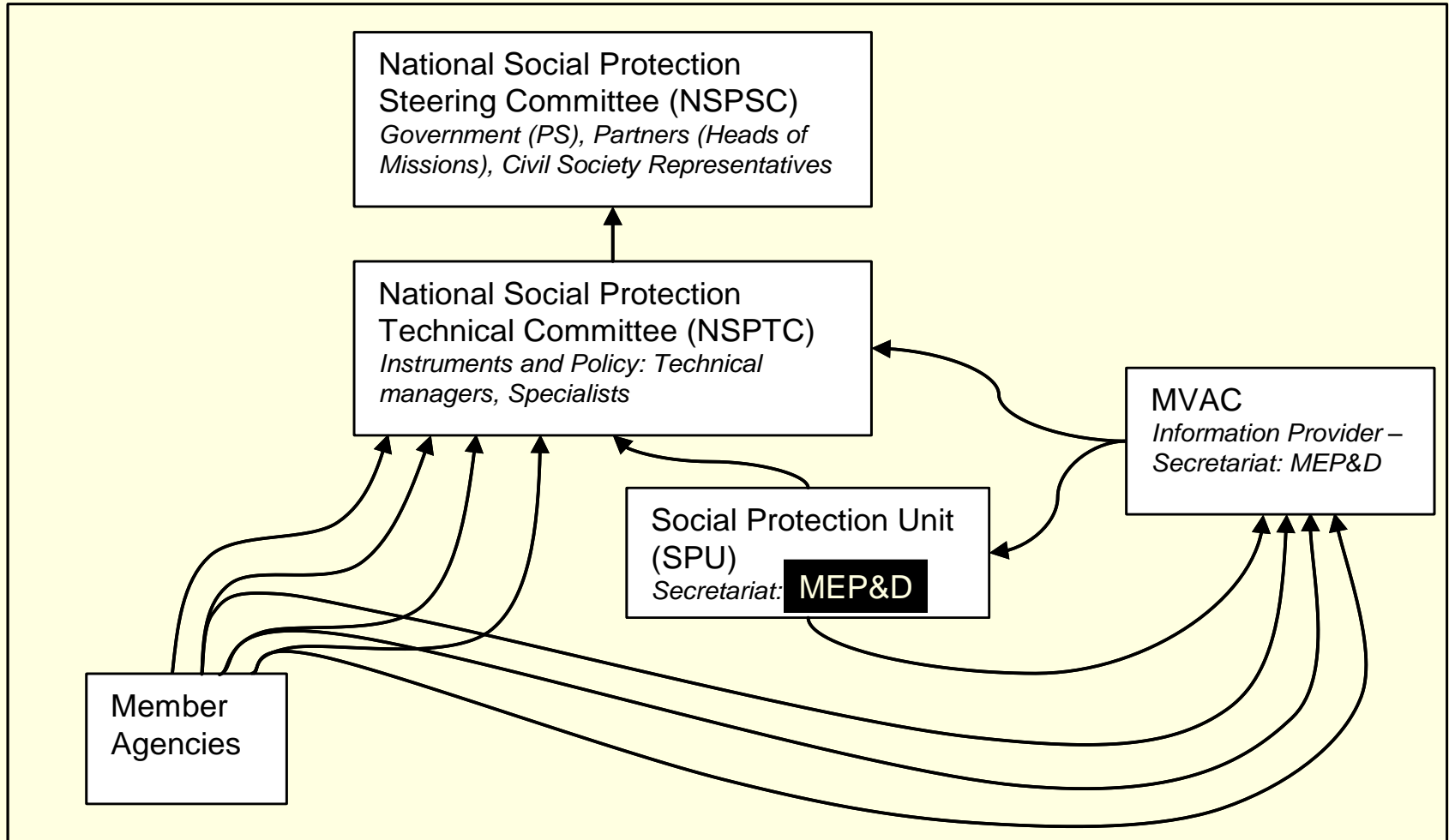
- Disaster risk management
 - Information needed for targeting on:
 - Slow onset disasters, such as hunger caused by drought
 - Rapid onset disasters, such as floods
- Social protection programmes
 - Information needed for targeting broad safety net activities, such as
 - Predictable welfare transfers (cash or in-kind)
 - Productivity enhancing (e.g. input subsidies)

Social Protection

- Social protection programmes (cont)
 - Information needed for evaluating programmes
 - Modelling impacts
 - Comparing cost/benefits
 - Relationship between incomes and other important welfare indicators, e.g. malnutrition, HIV/AIDS rates

MVAC Links to SP

The MVAC and how it informs the Social Protection Committees



Food Security Policy (FSP)

- Grew out of the Food Security Joint Task Force (FSJTF):
 - Forum for sharing and disseminating information, discussing options and solutions
 - Housed in the Ministry of Agriculture and Food Security
 - Set up in 2002 to coordinate response to the crisis
 - Continued afterwards with the aim of establishing a broad Food and Nutrition Security Policy
 - Played a large role in coordinating the response to the 2005/06 food crisis.

FSP

- Four Pillars:
 - Food Availability
 - Food Access
 - Food Utilisation
 - Stability
- Malawi VAC is positioned in the FSP implementation structure as an information provider
- Malawi VAC provides three important indicators to the FSP Monitoring plan

Overall Considerations

Key considerations for MVAC information to be useful to Government Decision-Making:

1. Accurate and timely information (budgetary process)
2. Information for broad social protection programmes (includes disaster and medium-term)
3. VAC information will continue feeding into the Government's policy framework, especially the MGDS, the Social Protection Policy and the Food Security Policy

How MVAC Information is used in Programming

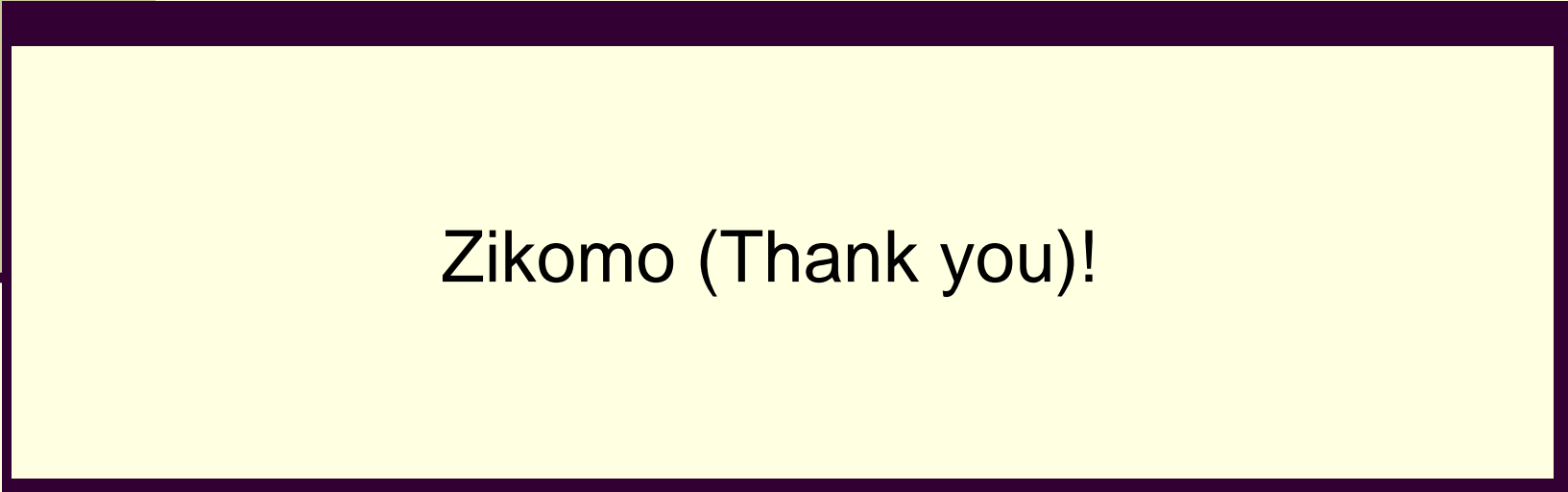
- Missing entitlements: Expressed as:
 - FOOD (cereal) – food aid interventions, e.g. WFP
 - CASH equivalents – cash transfers, social grants, e.g. Concern WW in Dowa 2005 & 06 used for programme design: costing, deliveries
- No. of people AT RISK
 - Programme scale
 - Wealth breakdown criteria used for targeting
- Rations size calculations

How MVAC Information is used in Programming

- **Baseline Profiles**
 - Livelihood weaknesses and threats
 - Identify constraints on production and exchange systems
 - Linkages between markets and livelihoods
 - Seasonal and labour calendars



The End



Zikomo (Thank you)!