



MALAWI  
Vulnerability  
Assessment Committee



SADC FANR  
Vulnerability  
Assessment Committee

# The Information System with the MVAC

## Our Combination of Tools

By: Charles Rethman

TA to MVAC, MVAC Sec, M&E Division, MEPD

# The Players

---

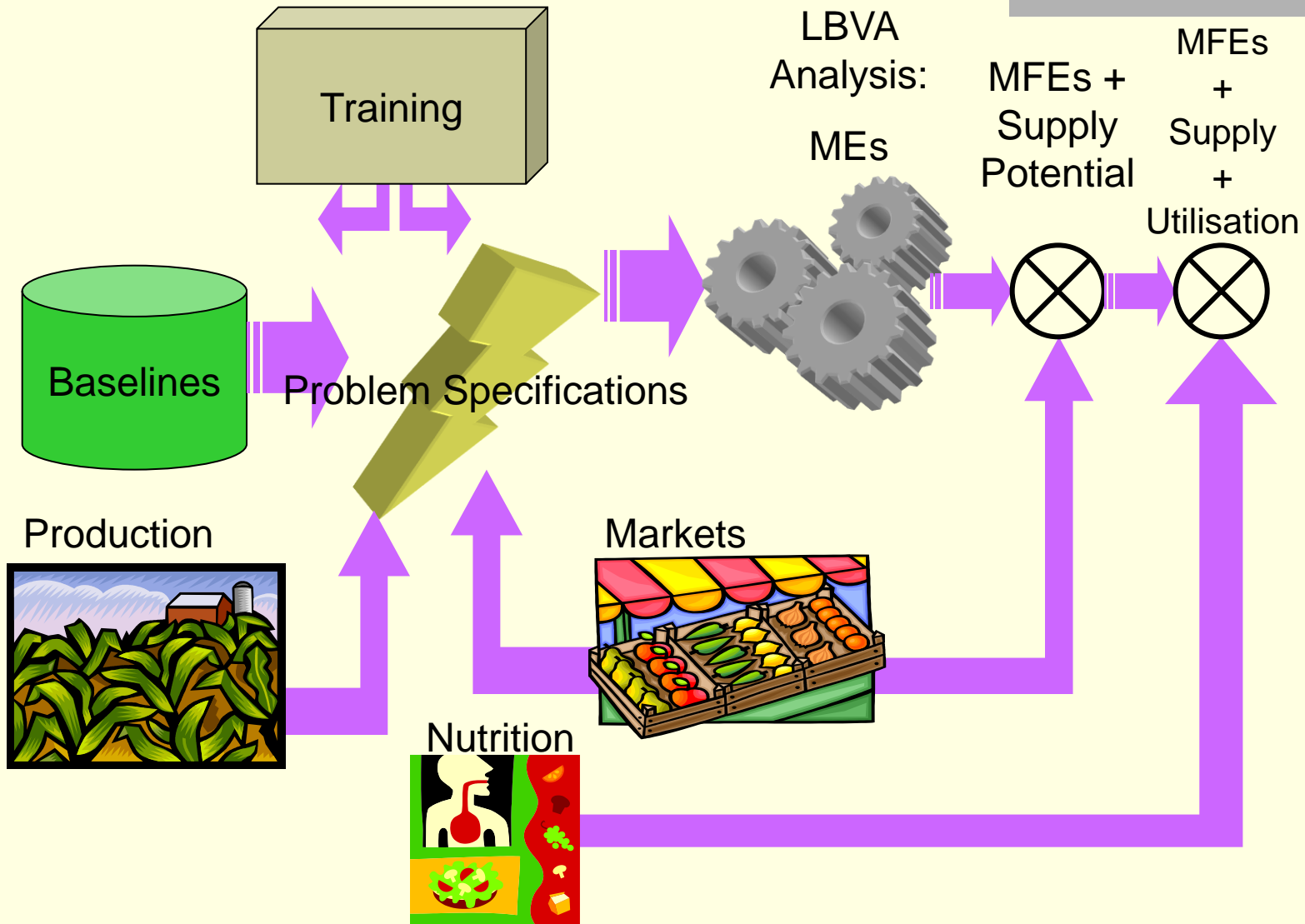
- Met service (rainfall, crop indices)
- MoAFS (crop estimates, prices, FSJTF - Forum)
- FEWS-NET (RS, price analysis, market data, constant field updates)
- Action Against Hunger (Nutrition & FS sentinel site surveillance)
- WFP (Response measurement – CHS)
- MVAC (includes a Secretariat in the Ministry of Economic Planning and Development (supported by SC))

# EW System

---

- Key input variable measurement (the EARLY part)
- Vulnerability forecasting (making sense of the input variables)
- Trend and surveillance monitoring (input variables) for updating the forecast
- Trend and surveillance monitoring (outcome variables) for testing the forecast

# EW Schema



# EW: Harmonising the Data

---

- Linking the data involves harmonising in three dimensions:
  - Spatially
  - Temporally
  - By socio-economic entities

# Spatial (Dis)Harmony

---

- Different spatial units:
  - Administration: Region → District → TA → STA → Village
  - Agriculture: ADD → District → EPA → Section
  - National Statistics Office: Region → District → TA → Enumeration Area
  - Education, Health and the parastatals all have their own units as well.

# Spatial Harmony

---

- Getting the crop estimates into livelihood units
  - Data obtained at EPA (agric sub-district) level
  - Most LZs respect EPA boundaries
  - For analysis, combine similarly affected EPAs

# Crop estimates arranged by EPAs for comparing years

---

# Spatial Harmony

---

Using HEA data and survey data

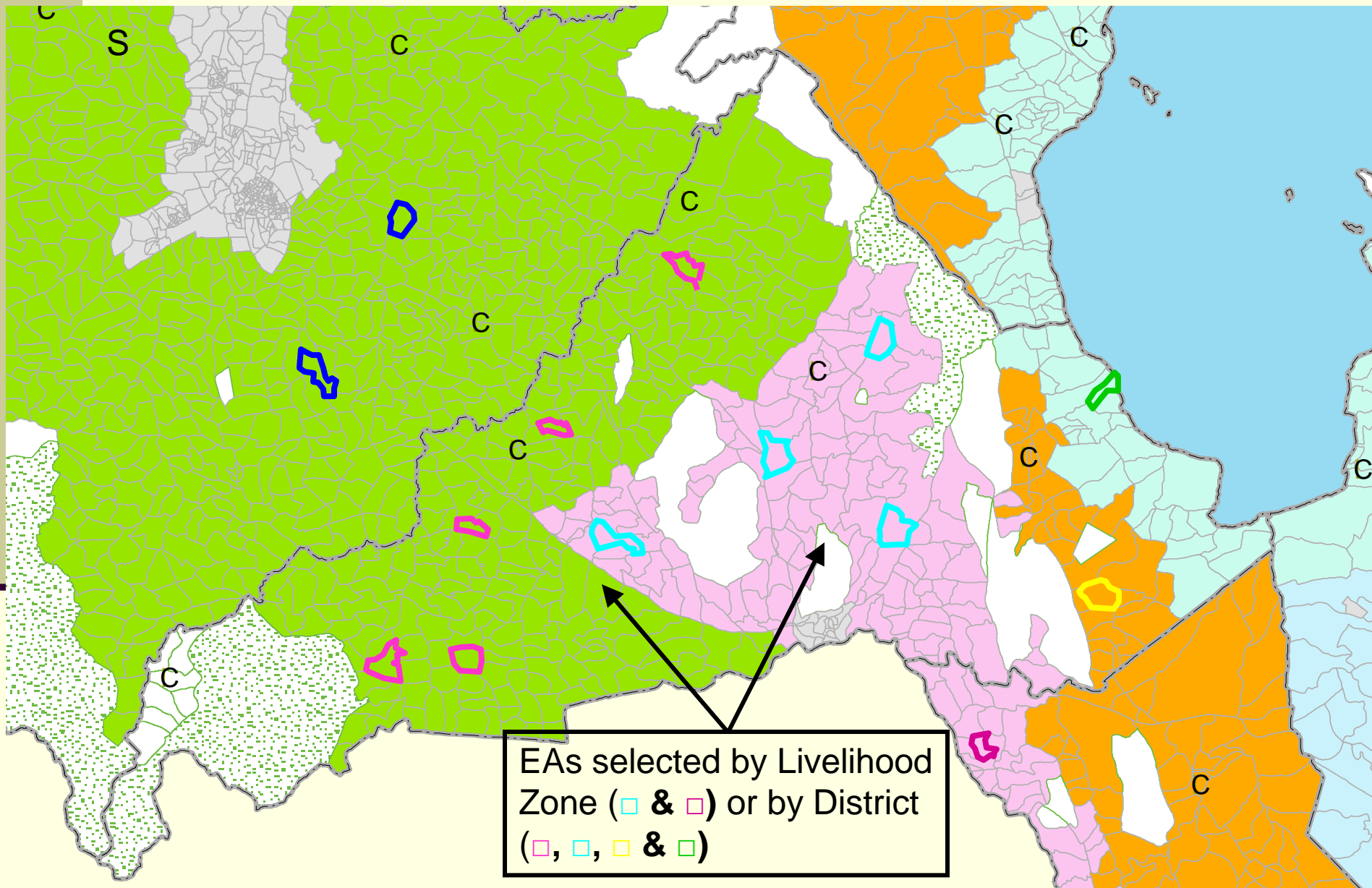
*What we have done to harmonise our data sets is to start from a single common unit – the NSO **ENUMERATION AREA (EA)***

**Each and Every EA is assigned attributes for each and every other Geographical Unit**

*In a two-stage sampling system, we encourage EAs as the basic cluster unit.*

*Encourage agencies to try to ensure enough clusters to allow for aggregation by different units*

# EAs, LZs Example



# Temporal harmony

---

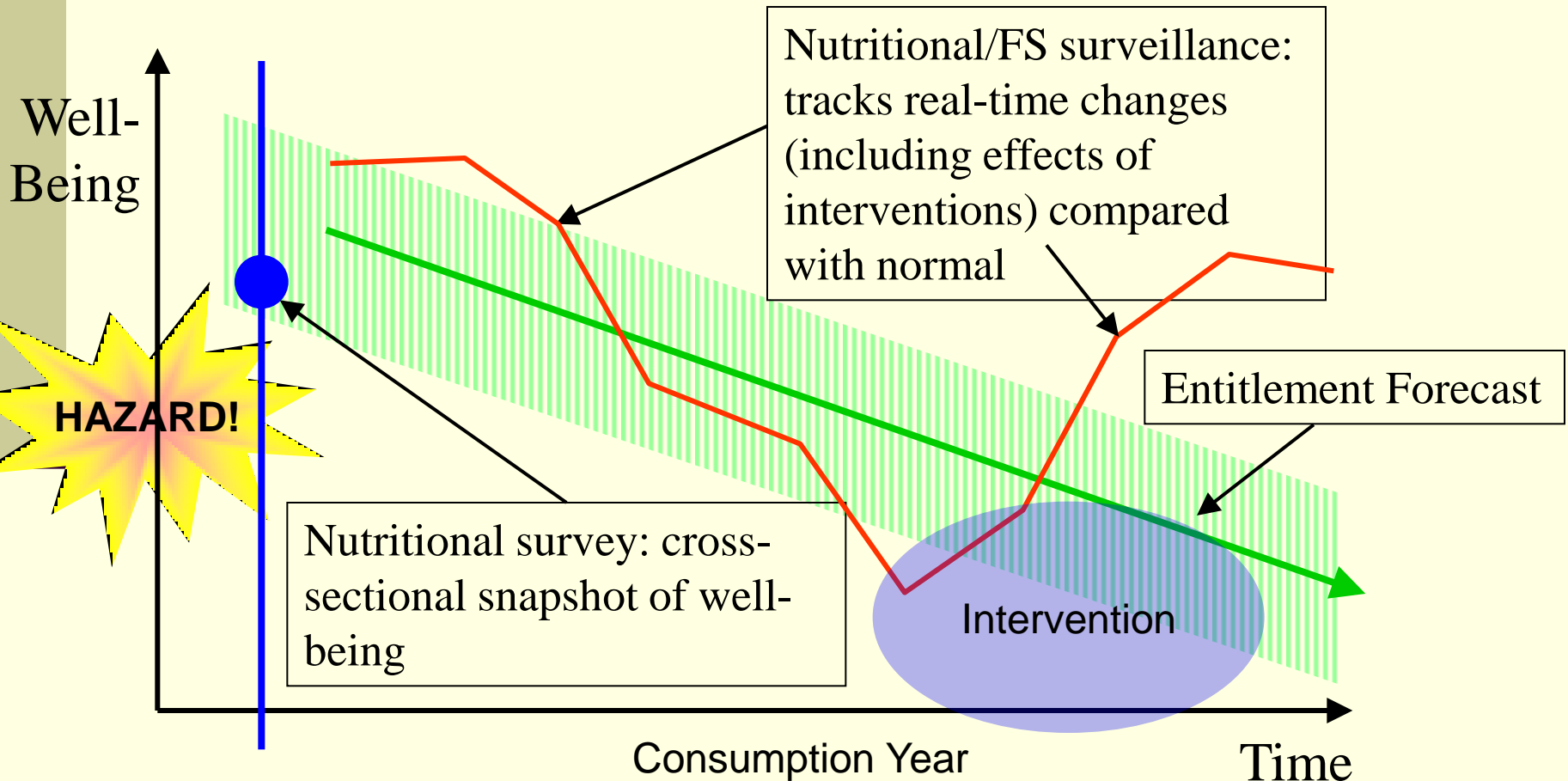
- Keeping outcome indicators together with other outcome indicators, e.g.
  - Meal frequency (what is a meal?), Anthropometry, Forecast missing entitlements (previous)

## **NOT**

- Rainfall, Anthropometry, prices

# Timeline Sketch

How entitlement forecast, nutrition and surveillance info works

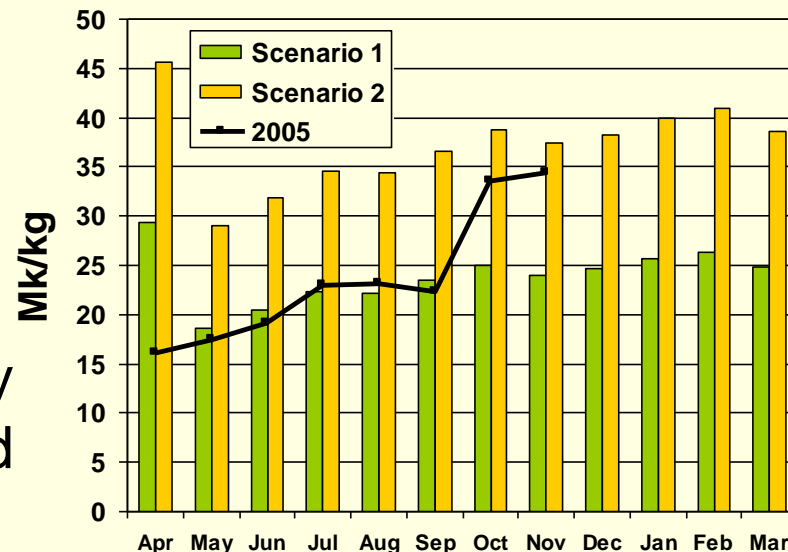


# Other input variables

## ■ Prices

- VAC made two scenarios: High and Low
- FEWS-NET disaggregated forecast to monthly prices, then plotted actual price against them

Comparison of 2005 prices to VAC scenarios



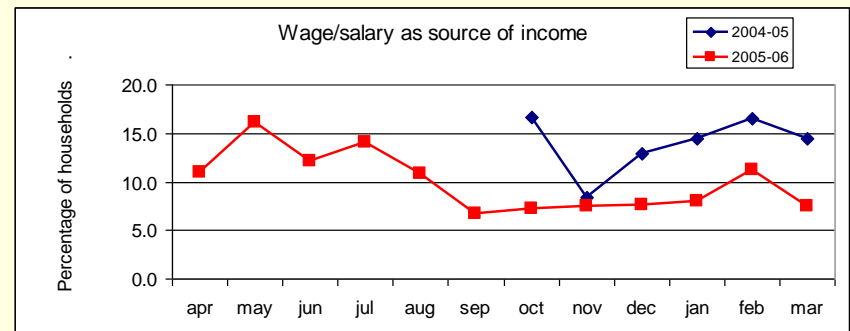
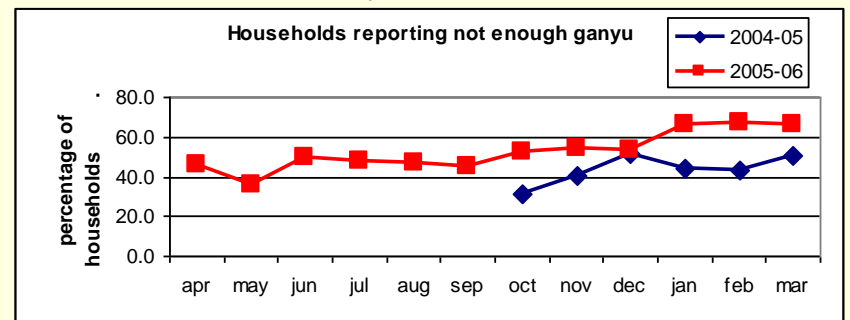
***Middle Shire Livelihood Zone:  
Machinga, Mwanza and Balaka***

# Other input variables

## Sentinel site surveillance (trend monitoring)

- Project led by Action Against Hunger
- Have 132 sites across the country
- Value is in measuring change: comparing this year and previous RATHER than absolute values or snapshots

### Rift Valley Escarpment LZ



# Wealth status harmony

---

- Encourage surveys to disaggregate their findings by wealth groups (include wealth (asset, income) questions to the survey
  - **Caveat:** changes year-to-year in asset holdings
  - Some surprises: e.g. insignificant relationship between anthropometric measures and wealth group in the nutrition survey done at the time of the MVAC forecast (harvest-time)
  - **Test:** Will the GAM for the poorest rise in the forecast areas with households at risk?

# Other input variables

---

- Population figures
  - Use the official projected growth rate and the '98 census
  - Issues with accuracy
  - Aggregate up from EAs
  - MVAC members with the NSO, Ministries to further assist in harmonising spatial units around the Enumeration Area

# Combining data for

---



Thank you!



[www.malawivac.net](http://www.malawivac.net)