

# Few Changes to Vulnerability Forecast

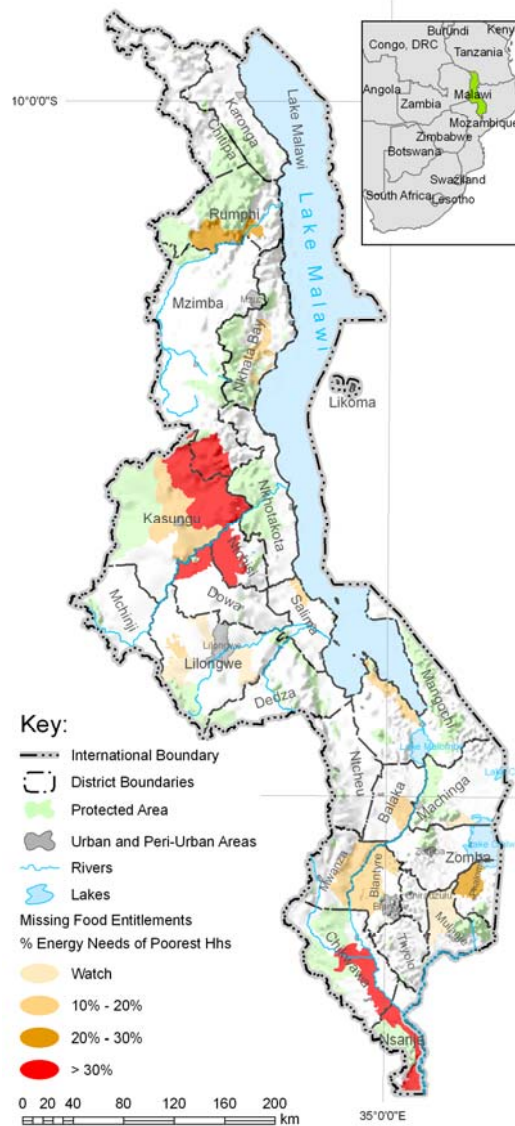
January 2007 Brief

In June 2006, the Malawi Vulnerability Assessment Committee (MVAC) forecast that during the present consumption year, 833,000 people would be at risk of acute, transient hunger following what was for them a poor harvest in April-May 2006.

The revised and updated analysis completed in January 2007 for the 2006-2007 consumption year shows that the same number of people are still at risk of hunger. However, there are small changes in the levels of missing food entitlements (without factoring in interventions), due to the following reasons:

- The farming season was delayed in Nsanje and Chikwawa districts, stretching the consumption year. (Kasungu, Dowa, Ntchisi, Mzimba and Rumphi districts normally have a later consumption year that ends in April, not March). This means that interventions planned as a response to food insecurity in these areas should continue.
- Good food availability has resulted in lower-than-expected cereal purchase prices in the South. This has assisted poorer households this year to afford more purchases, even though low prices may send wrong signals for production in the following year.
- Households in the Central and Northern Regions have not benefited so much from the improved prices and, discounting the effects of the interventions there, the missing food

Areas Vulnerable to Hunger in Malawi  
Poorest Households: Forecast for April 2006 to April 2007




District with populations at risk	Pop-ulation at risk	Cash to cover missing food entitlements (MWK million)		Maize to cover missing food entitlements (MT)	
		Forecast	Revised	Forecast	Revised
Balaka	25,900	29.0	15.6	1,000	500
Blantyre	106,500	165.4	60.0	5,400	2,200
Chikwawa	59,900	132.3	122.8	4,400	4,300
Dowa	48,800	144.8	144.8	4,400	4,400
Kasungu	238,200	611.9	611.9	18,800	18,800
Lilongwe	12,300	15.0	9.6	500	400
Mangochi	39,500	34.4	34.4	1,200	1,200
Mwanza/ Neno	22,400	25.0	13.2	900	500
Mzimba	51,300	152.1	152.1	4,600	4,600
Nkhata Bay	11,700	9.9	9.9	300	300
Nsanje	51,900	114.7	114.9	3,800	3,700
Ntchisi	98,500	292.3	292.3	8,900	8,900
Phalombe	27,000	35.4	35.4	1,200	1,200
Rumphi	25,300	39.9	39.9	1,500	1,500
Salima	13,800	12.0	11.2	400	300
<b>Grand Total</b>	<b>833,000</b>	<b>1,814.1</b>	<b>1,668.0</b>	<b>57,300</b>	<b>52,800</b>

entitlements would otherwise be the same as was forecast.

- There are no indications that the populations in the areas previously considered as on 'watch' have had their situation deteriorate so as to qualify for free humanitarian relief.

The Table on the left shows details of the number of people, by district, at risk of hunger and the corresponding missing food entitlements.

It is also important to know, even when people have enough food, whether their eating habits promote or encourage healthy lives. This is what is called nutritional status and information on this is overleaf.




**MALAWI**  
Vulnerability  
Assessment Committee

**Malawi**  
Vulnerability  
Assessment  
Committee

In collaboration with

**The SADC-FANR**  
Regional  
Vulnerability  
Assessment  
Committee



**SADC FANR**  
Vulnerability  
Assessment Committee



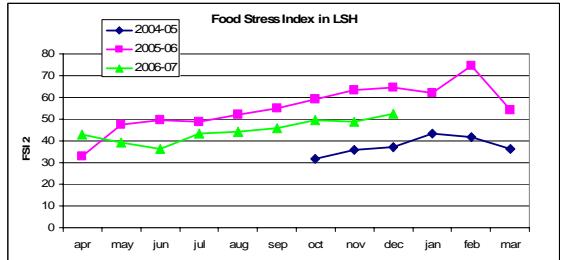
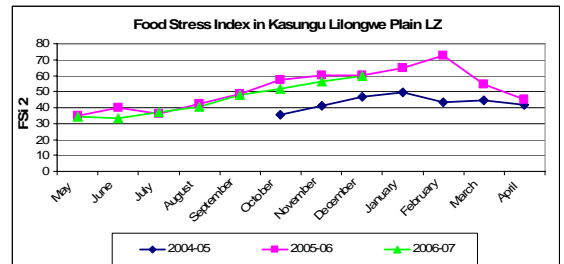
Government of the  
Republic of Malawi

# Food Security Surveillance Trends

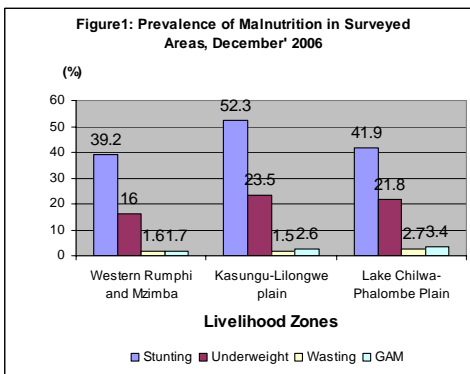
The Ministry of Agriculture and The outcome indicators are combined into an index, called the Food Security and the Ministry of Health and Population, in conjunction with Action Against Hunger, collect and analyse trend data from 135 sentinel sites across the country. Data from these sites can be aggregated over livelihood zones and some of the data also provide cover indicators not provided elsewhere that feed into the MVAC's analysis. Other data on overall food security outcomes are compared with the forecasts of the MVAC. This provides for continuous monitoring and assists with accurate updates of the forecast.

The Food Stress Index. Data for the food stress index in two of the most affected livelihood zones are presented in the graphs, right. It can be seen that in Kasungu-Lilongwe Plain, the line for 2006-07 (light green) matches that of 2005-06, while in Lower shire, it is between that of a more 'normal' year, 2004-05, and what was for this livelihood zone a very bad year, 2005-06.

Similar trend indicators are collected for nutrition data.



## Nutrition Update Assessment



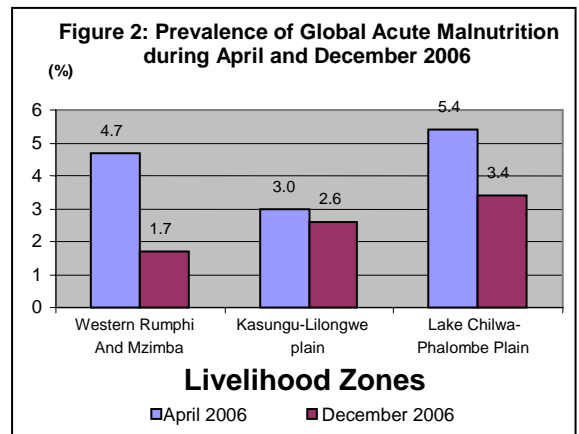
This was conducted from December 1 to 11, 2006 in parallel with field visits and analysis. The survey covered the same three areas that were visited in April: Western Rumpi/ Mzimba in the Northern Region, Kasungu/Lilongwe Plain in the Central Region and Lake Chilwa/Phalombe Plain in the Southern Region. This was done to see the trend in food and nutrition situation as the season progresses. The prevalence in November are presented in Figure 1.

affected areas at the time of the survey.

The explanation lies in the fact that combination of three facts: the food security data excludes interventions and that malnutrition manifests itself 2-3 months after exposure to hunger and the intricate, complex nature of nutrition outcomes.

A more detailed report on the nutrition surveys, with explanations of the methodology, can be obtained from UNICEF or the MVAC Secretariat.

Contrary to what one might expect in areas with reduced access to food, malnutrition prevalence among under-5's decreased from the first survey in April to the second one in December; even though this is as the areas moved into the 'hunger' season. This decrease is presented for GAM in Figure 2 and similar results were obtained for wasting and underweight measures, while stunting remained more or less the same. This decrease in malnutrition occurred despite good evidence that hunger was increasing in the af-



**MALAWI**  
Vulnerability Assessment Committee  
**MVAC SECRETARIAT**

Room 58, Ministry of Economic Planning & Development  
P Bag B506  
Lilongwe, 3  
Malawi

Tel. +265 (0) 1 78 8417  
Fax +265 (0) 1 78 8609

The MVAC Secretariat is funded by the Government of Malawi and the British Department for International Development (DFID), with technical and administrative support from Save the Children (US). Additional funding is received from the European Union, through the Technical Secretariat of the Food Security Joint Task Force in the Ministry of Agriculture and Food Security

*The Malawi Vulnerability Assessment Committee comprises Government, inter-government, academic and non-profit member organizations that seek to provide information to inform public action. Participating MVAC members include:*

Action Against Hunger, Catholic Relief Services, Concern Worldwide, the Department of Poverty and Disaster Management Affairs, FEWS-NET, the Food and Agriculture Organization, the Ministry of Agriculture and Food Security, the Ministry of Economic Planning and Development, the Ministry of Finance, the

Ministry of Local Government, the National Statistics Office, Oxfam, Save the Children, UNICEF, The United Nations Development Programme, the University of Malawi (Bunda College) the World Food Programme and World Vision

*Data from the following organisations were gratefully received and used:*

1. The Ministry of Agriculture and Food Security (crop estimates, the food balance sheet and farm gate prices)
2. The Ministry of Economic Planning and Development (Economic data, inflation and GDP projections)
3. The Department of Poverty and Disaster Management Affairs (information on recently affected areas)
4. The National Statistics Office (Economic data, population figures and breakdowns)
5. Meteorological Service
6. United Nations Children's Fund (Nutrition assessment, nutrition-socio-economic correlations)
7. FEWS-NET (price data)
8. Nutrition and Food Security Surveillance System (Action Against Hunger/Ministry of Health/Ministry of Agriculture)

**Check out our website:**  
[www.malawivac.net](http://www.malawivac.net)