

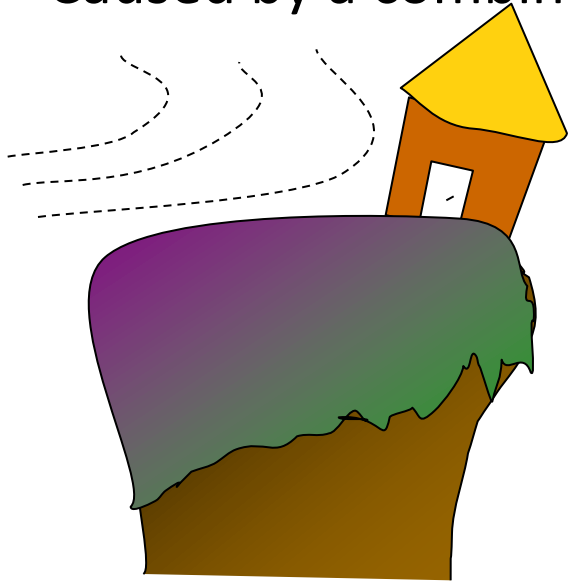
Vulnerability in Botswana: Measurement for Shaping Policy

The Botswana Vulnerability
Assessment Committee (BVAC)

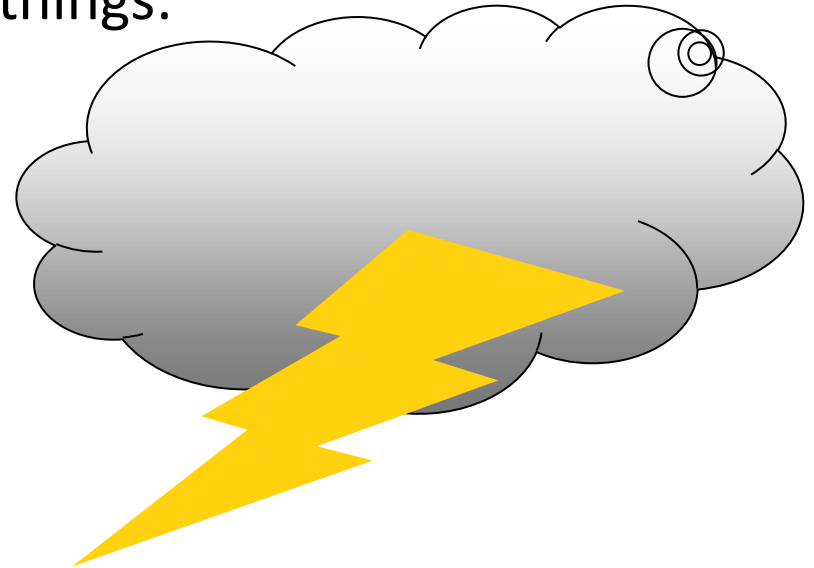
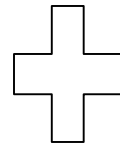
Vulnerability – What is it?

- In plain language:
People's inability to meet their basic needs

Caused by a combination of two things:


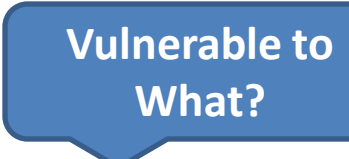


Lack of resilience (poverty)



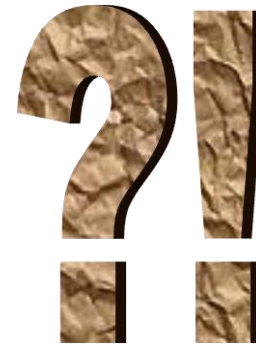
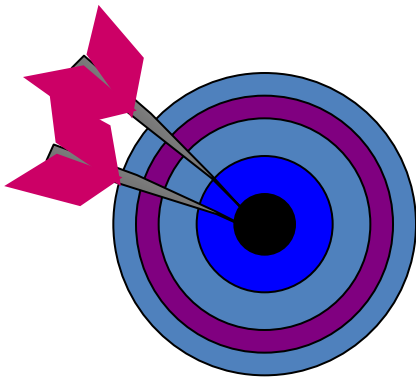
Exposure to hazard (shock)

How do we measure it

- It's clear that it is not enough to just measure the **hazard**(e.g. a drought, flood)...
- ...**poverty** plays a vital role... 
- ...but if a hazard is **bad enough**, even those who are not poor can be vulnerable 
- It is also important to remember that vulnerability measurement is about **definition**
 - We are ALL vulnerable (we eventually all die), so we concern ourselves with people who are vulnerable to a particular situation, e.g. hunger or some other deprivation that we find unacceptable.

Measurement Information system

- Credibility
 - Accuracy (resolution vs. coverage)
 - Nurturing of skills (for buy-in and ownership)
Collaborative analysis
 - Demand-driven & responsive



Measurement Information system

- Timeliness
 - Speed of assessment, analysis, reporting
 - Cover large geographical areas (often with difficult logistics)



Measurement Information system

- Low cost (for sustainability)
 - Minimal outside support (after initial setting up)
 - Able to draw on other existing information/data sources
 - Scalable

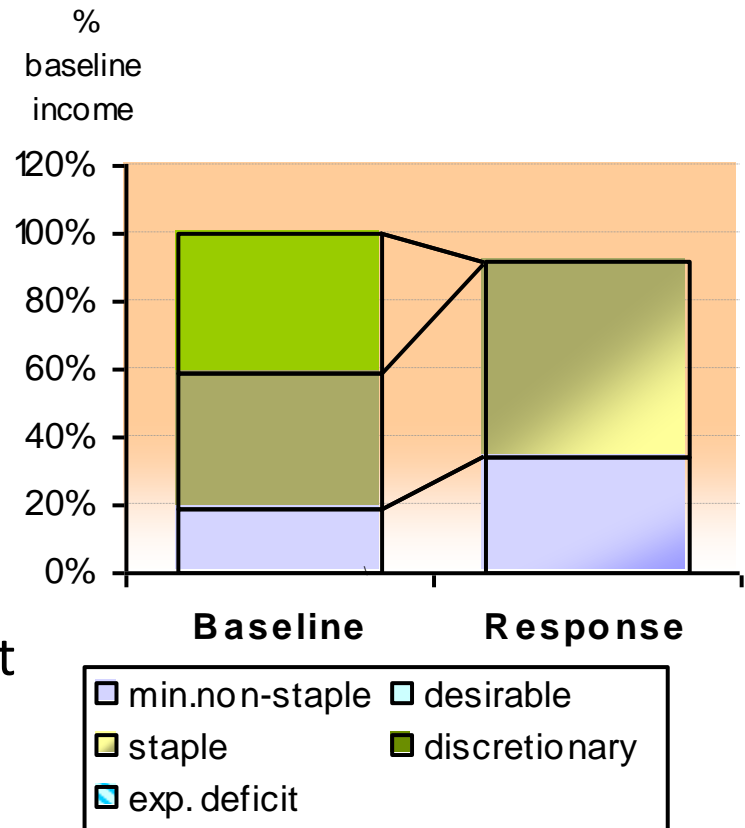


Information System

Livelihoods Based Vulnerability Assessment

LBVA was designed to fulfil all these requirements, by:

- *Modelling* the impact of changes in people's strategies to survive.
- Examining *coping* strategies (thresholds/compromises)
- Understanding the impact of *markets* ('capacity'/volume as well as prices)
- *Linking* a wide variety of different information and data together into a single analysis



Information System

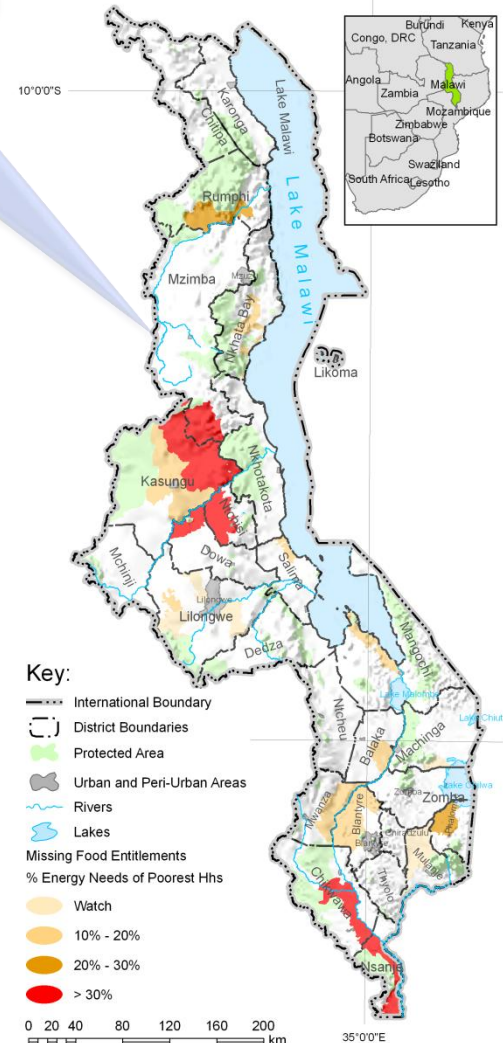
Livelihoods Based Vulnerability Assessment

Example of analysis
outcome map from Malawi

LBVA Outcomes:

- Detailed descriptions of how the poor make a living;
 - Highlights weaknesses and capabilities of their livelihoods...
 - Provides poverty numbers with regular changes...
 - Shows the relationship between income/asset holdings and basic needs shortfalls (hunger, if food)
- Link between macro-conditions (e.g. crop production, livestock production, inflation) and household impacts.
- Forecast for the economic period ahead (usually one year)
- Numbers of people *at risk* of shortfalls (hunger, if food)
- Degree of shortfalls (the entitlement gap or missing entitlement)

Areas Vulnerable to Hunger in Malawi
Poorest Households: Forecast for April 2006 to April 2007



Livelihoods Based Vulnerability Assessment

Steps to be taken

- Livelihood zoning
 - defining geographic areas of similar livelihoods
 - Baselines
 - Detailed descriptions of livelihoods (assets, food, income, expenditure)
 - Situation Analyses
 - Looking at current or future changes and impact on livelihoods
 - Detailed studies
 - Investigations into specific issues on a livelihood ... (demand-based)
- Links or integration with Existing Systems (e.g. DA)
 - Situation analyses to feed into budget
 - Livelihoods and baselines provide insight for social security programmes (e.g. grants)
 - Identification of threats and resilience of Hhs and communities.

Existing Systems

- Well-established system of measurement of *some* things:
 1. DA – largely focuses on the hazard only
 2. Emergency Assessments – hazard only
 3. Income surveys – poverty only
 4. Macro-economic data (GDP, growth, inflation, etc.) – hazard only
 5. Production data (crops and livestock) – largely for hazard
 6. Demographic data – poverty only
- Responsibility with different Government agencies

Establishing the System

What we have done

- Institutional structure
 - Scoping study
 - Stakeholder workshops
 - Proposed Botswana Vulnerability Assessment Committee (BVAC)
- Scoping study: findings & recommendations
- BVAC Terms of Ref
 - Log frame of goal, objectives and outputs

Establishing the System

Scoping Study

Undertaken in October 2008 and report submitted, finalised by March 2009.

- Findings:

1. IMDC and NFS-MG issues are discussed jointly... Merge them?
2. Linkages between different committees on cross-cutting issues weak
3. District-level information collection well coordinated, not national
4. Membership dominated by Government agencies (except MSCPR)
5. EWTC monitors food supply, income, markets and commodity prices– not adequately captured. Nutrition excluded.
6. District level analysis, not household
7. Price trends from SAFEX
8. Timing of DA
9. Findings should help identify the vulnerable
10. Method of focus-group discussions at district-level good but incomplete
11. Lack of baselines
12. Vulnerability trends are not analysed
13. Information and Reporting: more analysis, graphics and user-friendly presentation

Establishing the System

Scoping Study

Recommendations :

1. Government to establish a Botswana VAA system
2. Expand the membership & mandate of the EWTC
→ becomes BVAC
3. Establish a Secretariat in MFDP for the new BVAC
4. Review drought assessment methodologies, emphasising secondary data and livelihoods-based approaches
5. Integrate VAA into the current early warning monitoring system
6. Strengthen M&E of interventions

Establishing the System

The Botswana Vulnerability Assessment Committee (BVAC)

BVAC Structure

- Partner participation
 - Wide range
 - Consensus by technical practitioners
 - Multi-agency
 - Different interests represented
- Lead Agency (chair, secretariat) - MFDP
- A structure that feeds into both Government and Partners' planning cycles and policy
 - Annual budget
 - Government policies & strategies
- Strong link between information and action
 - Easier, firmer & clearer decision options
 - Evidenced-based responses



Establishing the System

The Botswana Vulnerability Assessment Committee (BVAC)

- BVAC Terms of Reference:
 - Goal:

Improved information on livelihoods and food security to enhance poverty reduction and management of disasters by 2016
 - Objectives:
 - *To influence the formulation, reviewing, monitoring and evaluation of programmes, policies and strategies relevant to food security, poverty reduction and livelihoods*
 - *To improve collection, collation, analysis and dissemination of food security and livelihoods information*
 - *To strengthen capacity for understanding vulnerability assessment and analysis*

Outputs also listed under each objective

Establishing the System

The Botswana Vulnerability Assessment Committee (BVAC)

BVAC activities for this plan period:

- Exchange visits:

 - Visits to other countries with VACs and VAA systems*

- Livelihood Zoning:

 - Desk study to draft initial LZ map*

- Training and baselines:

 - *Combined training, field work and analysis of 1-2 LZs*
 - *Remaining baselines to be done later*

- Situation analysis

 - To provide a forecast for the following year*